

# Elabscience<sup>®</sup>

## Cell Products

Cell culture and cell lines have assumed an important role in studying physiological, pathophysiological and the differentiation processes of specific cells. It allows the examination of stepwise alterations in the structure, biology, and genetic makeup of the cell under controlled environments.

### Why choose the cell lines from Elabscience<sup>®</sup> ?

- 1 Wide range of cell lines available--including the normal and cancerous cells from human, rat, mouse, hamster, monkey, dog, pig, insect, etc.
- 2 Strict quality control procedures in place to authenticate the cell lines.
- 3 No cross-contamination from mycoplasma, bacteria, fungi.
- 4 Timely and professional technical support provided by an experienced team.
- 5 Fast delivery through our global distribution network.

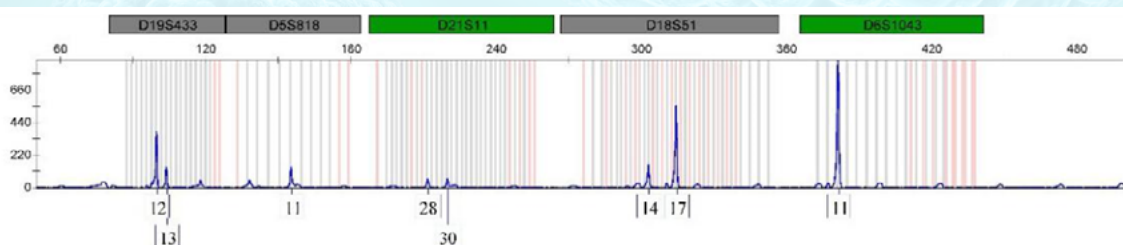
### About STR profiling

One of the most serious issues facing the biomedical research community today is the authentication of human cell lines used in research and drug development as models of normal and cancer tissue.

Short tandem repeat (STR) is a short tandem repeat structure with a core sequence of 2-6 bases. In the early 1990s, STR locus was first used as an important genetic marker in human paternity testing.

According to the results of STR report, cell growth status (whether there is a cross-contamination with other cells) and the strain of cell lines can be confirmed.

At the present, cell line STR-profiling would appear to represent the greatest value to the scientific community for authenticating human cell lines unambiguously, quickly, and for the least expense.



## Commonly used cell lines

Cat. No.	Cell Line	Species	Tissue	Category
EP-CL-0493	BV2	Mus musculus, Mouse	Brain	Transformed cell line
EP-CL-0054	Calu-3	Homo sapiens, Human	Lung adenocarcinoma, derived from metastatic site: pleural effusion	Cancer cell line
EP-CL-0190	RAW 264.7	Mus musculus, Mouse	Abelson murine leukemia virus-induced tumor, ascites	Cancer cell line
EP-CL-0314	2V6.11	Homo sapiens, Human	Kidney	Transformed cell line
EP-CL-0050	Caco-2	Homo sapiens, Human	Colon	Cancer cell line
EP-CL-0001	293 [HEK-293]	Homo sapiens, Human	Embryonic kidney	Transformed cell line
EP-CL-0150	MDA-MB-231	Homo sapiens, Human	Mammary gland/breast, derived from metastatic site: pleural effusion	Cancer cell line
EP-CL-0006	3T3-L1	Mus musculus, Mouse	Embryo	Spontaneously immortalized cell line
EP-CL-0005	293T [HEK-293T]	Homo sapiens, Human	Embryonic kidney	Transformed cell line
EP-CL-0560	LX-2	Homo sapiens, Human	Liver	Transformed cell line
EP-CL-0208	SH-SY5Y [SHSY-5Y]	Homo sapiens, Human	Bone marrow	Cancer cell line
EP-CL-0149	MCF7 [MCF-7]	Homo sapiens, Human	Mammary gland, breast, derived from metastatic site: pleural effusion	Cancer cell line
EP-CL-0233	THP-1	Homo sapiens, Human	Peripheral blood	Cancer cell line
EP-CL-0491	VERO C1008 [Vero E6]	Cercopithecus aethiops	Normal kidney	Spontaneously immortalized cell line
EP-CL-0272	EA.hy926	Homo sapiens, Human	Umbilical vein/vascular endothelium	Hybrid cell line
EP-CL-0016	A549 [A-549]	Homo sapiens, Human	Lung	Cancer cell line
EP-CL-0242	Vero	Cercopithecus aethiops	Kidney	Spontaneously immortalized cell line
EP-CL-0089	H9c2(2-1)	Rattus norvegicus, Rat	Heart/myocardium	Spontaneously immortalized cell line

## Medium & Reagents & Kits

Cat. No.	Product Name	Form	Size
<b>Medium</b>			
EP-CM-P0031	DMEM, High glucose	Powder	1×10L/10×1L
EP-CM-P0001	RPMI 1640	Powder	1×10L/10×1L
EP-CM-P0113	DMEM/F12	Powder	1×10L/10×1L
EP-CM-P0139	MEM	Powder	1×10L/10×1L
EP-CM-P0203	MEM $\alpha$	Powder	1×10L/10×1L
EP-CM-P0213	IMDM	Powder	1×10L/10×1L
EP-CM-P0220	M199	Powder	1×10L/10×1L
EP-CM-P0232	McCoy's 5A	Powder	1×10L/10×1L
<b>Buffer Solution</b>			
EP-CM-L0001	D-Hank's Balanced Salt Solution (D-HBSS)	Liquid	500 mL
EP-CM-L0006	Phosphate Buffer (PBS)	Liquid	500 mL
EP-CM-L0007	Phosphate Buffer (PBS), 10×	Liquid	500 mL
<b>Antibiotic</b>			
EP-CM-L0048	Penicillin-Streptomycin Solution, 100×	Liquid	100 mL
EP-CM-L0449	Penicillin-Streptomycin-Amphotericin B Solution, 100×	Liquid	100 mL
EP-CM-L0455	250 $\mu$ g/mL Amphotericin B Solution	Liquid	10 mL
<b>Dissociation Reagent</b>			
EP-CM-L0043	0.25% Trypsin Solution	Liquid	100 mL
EP-CM-L0447	0.02% EDTA Solution (Versene Solution)	Liquid	100 mL
<b>Supplement</b>			
EP-CM-L0005	1M HEPES Solution	Liquid	500 mL
EP-CM-L0035	7.5% NaHCO <sub>3</sub> Solution	Liquid	100 mL
EP-CM-L0459	200g/L D-Glucose Solution	Liquid	100 mL
EP-CM-L0060	L-Alanyl-L-Glutamine Solution (200 mM), 100×	Liquid	100 mL
EP-CM-L0061	200mM L-Glutamine Solution (100×	Liquid	100 mL
EP-CM-L0462	100mM Sodium Pyruvate Solution (100×	Liquid	100 mL
EP-CM-L0463	MEM Non-Essential Amino Acid Solution (NEAA) (100×	Liquid	100 mL
EP-CM-L0464	MEM Amino Acid Solution (50×	Liquid	100 mL
EP-CM-L0465	MEM Vitamine Solution (100×	Liquid	100 mL
EP-CM-L0472	HAT Solution (50×	Liquid	10 mL
EP-CM-L0473	HT Solution (50×	Liquid	10 mL
<b>Assay Kit</b>			
E-CK-A362	Enhance Cell Counting Kit 8 (WST-8 / CCK8)	Kit	100T
E-CK-A211	Annexin V-FITC / PI Apoptosis Detection Kit	Kit	100T
E-CK-A218	Annexin V-APC / 7-AAD Apoptosis Detection Kit	Kit	100T
E-CK-A301	Mitochondrial Membrane Potential Assay Kit (with JC-1)	Kit	100T
E-CK-A351	Cell Cycle Assay Kit (Fluorometric-Red)	Kit	100T