

# Elabscience® TUNEL Apoptosis Kits Trusted by Researchers

🔍 **Used by Distinguished Researchers in Their Research, Leads to Publications in Top Journals**

📊 Citations of Elabscience® TUNEL Apoptosis Kits

**181** | Total Citations | **1248.15** | Total Impact Factor | **64.5** | Highest Impact Factor (*Cell*)

🔍 **Citations of Hot-selling TUNEL Apoptosis Kits**

📊 One-step TUNEL In Situ Apoptosis Kit (Green, FITC) (E-CK-A320)

**84** | Total Citations | **603.497** | Total Impact Factor | **30.8** | Highest Impact Factor (*Nature Genetics*)



IF=64.5

**Cell**  
One-step TUNEL In Situ Apoptosis Kit (Green, Elab Fluor® 488) (E-CK-A321)



IF=30.8

**Nature Genetics**  
One-step TUNEL In Situ Apoptosis Kit (Green, FITC) (E-CK-A320)



IF=24.8

**Science Immunology**  
One-step TUNEL In Situ Apoptosis Kit (Red, Elab Fluor® 555) (E-CK-A325)



IF=19.0

**Advanced Functional Materials**  
One-step TUNEL In Situ Apoptosis Kit (Red, Elab Fluor® 594) (E-CK-A322)



IF=18.9

**Science Bulletin**  
One-step TUNEL In Situ Apoptosis Kit (Green, FITC) (E-CK-A320)

🔍 **Advantages of the Elabscience® Apoptosis Kits**



### Safe and non-toxic

No dimethyl arsenate, non-toxic and harmless to people and the environment



### Easy to operate

Easy dyeing, time-saving and efficient



### Multiple choices

A variety of fluorescent dyes: FITC/Elab Fluor® 488/Elab Fluor® 555/Elab Fluor® 594/Elab Fluor® Violet 450/Elab Fluor® 647/HRP-DAB



### Dedicated reagent for different methods

Dedicated reagent sets for In Situ and Flow Cytometry detection methods, ensuring superior performance

🔍 **Advantages of Different TUNEL Detection Methods**

### In Situ TUNEL

When performing TUNEL assay on paraffin-embedded tissue sections, frozen tissue sections, cell slides or cell smears, with a fluorescence microscope, the In Situ apoptosis of cells is detected, and accurately reflect the typical biochemical and morphological characteristics of apoptosis.



### Flow Cytometry TUNEL

When performing TUNEL assay on cultured suspension/adherent cells with flow cytometry, the problem of low percentage of apoptotic cells caused by poor adherence of cells during In Situ apoptosis detection can be avoided. At this time, the proportion of apoptotic cells is detected, and the apoptotic cells can be grouped.

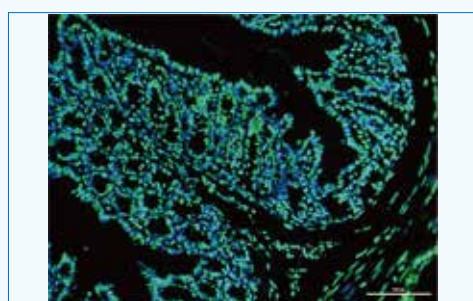


## 🔍 Comparison of Elabscience® In Situ and Flow Cytometry TUNEL Kits

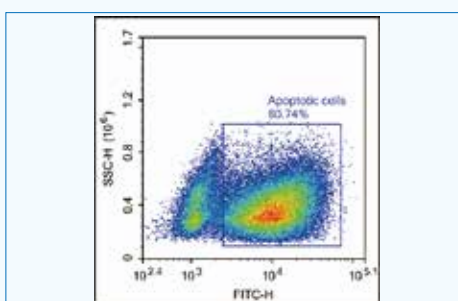
	One-step TUNEL In Situ	One-step TUNEL Flow Cytometry
Equipment	Fluorescence Microscope	Flow Cytometer
Sample Type	Paraffin section, frozen section, cell slide and cell smears	Suspension/adherent cells
Dyes	FITC/Elab Fluor® 488/Elab Fluor® 594/Elab Fluor® 647/Elab Fluor® 555	FITC/Elab Fluor® 488/Elab Fluor® 594/Elab Fluor® Violet 450/Elab Fluor® 647/Elab Fluor® 555
Result Type	Qualitative and semi-quantitative	Qualitative and quantitative

🔔 Tip: Apoptotic cells are difficult to fix on glass slides, Flow Cytometry method is more accurate. So we suggest prioritizing Flow Cytometry TUNEL method for cell detection.

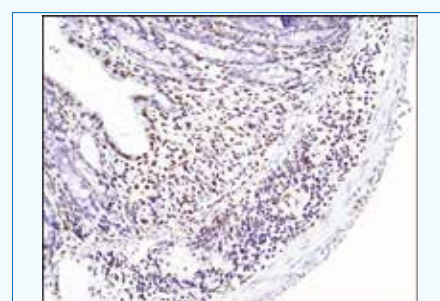
## 🔍 Elabscience® TUNEL Experimental Results



Mouse Colon Tissue incubated with DNase I  
One-step TUNEL In Situ Apoptosis Kit  
(Green, FITC) (E-CK-A320)



Flow Cytometry analysis of 2.5  $\mu$ M camptothecin-induced apoptosis for 4 h in HL-60 cells  
One-step TUNEL Flow Cytometry Apoptosis Kit  
(Green, Elab Fluor® 488) (E-CK-A421)



Mouse Colon Tissue incubated with DNase I for 10 min  
TUNEL In Situ Apoptosis Kit (HRP-DAB Method) (E-CK-A331)

## 🔍 Elabscience® TUNEL Apoptosis Detection Kits

Detection Method	Product Name	Dye	Cat.No.
Fluorescence Microscope	One-step TUNEL In Situ Apoptosis Kit (Green, FITC)	FITC, DAPI	E-CK-A320
	One-step TUNEL In Situ Apoptosis Kit (Green, Elab Fluor® 488)	Elab Fluor® 488, DAPI	E-CK-A321
	One-step TUNEL In Situ Apoptosis Kit (Red, Elab Fluor® 594)	Elab Fluor® 594, DAPI	E-CK-A322
	One-step TUNEL In Situ Apoptosis Kit (Red, Elab Fluor® 647)	Elab Fluor® 647, DAPI	E-CK-A324
	One-step TUNEL In Situ Apoptosis Kit (Red, Elab Fluor® 555)	Elab Fluor® 555, DAPI	E-CK-A325
Flow Cytometer	One-step TUNEL Flow Cytometry Apoptosis Kit (Green, FITC)	FITC	E-CK-A420
	One-step TUNEL Flow Cytometry Apoptosis Kit (Green, Elab Fluor® 488)	Elab Fluor® 488	E-CK-A421
	One-step TUNEL Flow Cytometry Apoptosis Kit (Red, Elab Fluor® 594)	Elab Fluor® 594	E-CK-A422
	One-step TUNEL Flow Cytometry Apoptosis Kit (Blue, Elab Fluor® Violet 450)	Elab Fluor® Violet 450	E-CK-A423
	One-step TUNEL Flow Cytometry Apoptosis Kit (Red, Elab Fluor® 647)	Elab Fluor® 647	E-CK-A424
	One-step TUNEL Flow Cytometry Apoptosis Kit (Red, Elab Fluor® 555)	Elab Fluor® 555	E-CK-A425
Light Microscope	TUNEL In Situ Apoptosis Kit (HRP-DAB Method)	—	E-CK-A331

EFL14-2403v1