

SARS-COV-2 NP Polyclonal Antibody

Catalog No.:	E-AB-V1015	Applications:	WB,ELISA
Storage:	Store at -20 °C, Avoid freeze / thaw cycles	Host	Rabbit

Important Note: Centrifuge before opening to ensure complete recovery of vial contents.

Antigen Information

Alternate Names coronavirus NP,coronavirus Nucleocapsid,coronavirus Nucleoprotein,cov np,ncov NP,novel coronavirus NP,novel coronavirus Nucleocapsid,novel coronavirus Nucleoprotein, NP, Nucleocapsid, Nucleoprotein Antibody

Background Coronavirus N protein is required for coronavirus RNA synthesis, and has RNA chaperone activity that may be involved in template switch. Nucleocapsid protein is a most abundant protein of coronavirus. N protein packages the positive strand viral genome RNA into a helical ribonucleocapsid (RNP) and plays a fundamental role during virion assembly through its interactions with the viral genome and membrane protein M. Plays an important role in enhancing the efficiency of subgenomic viral RNA transcription as well as viral replication. Because of the conservation of N protein sequence and its strong immunogenicity, the N protein of coronavirus is chosen as a diagnostic tool.

Product Details

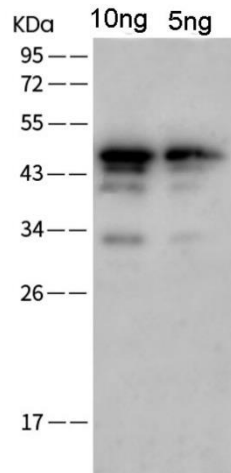
Host	Rabbit
Isotype	IgG
Immunogen	Recombinant 2019-nCoV Nucleocapsid Protein (His Tag)[PKSR030497]
Application	WB,ELISA
Reactivity	SARS-COV2
Dilution	WB 1:1,000-5,000 ELISA 1:5,000-10,000
Storage Buffer	0.2 µm filtered solution in PBS
Stability & Storage	Ships on ice packs. Store at -20°C
Descripton	Produced in rabbits immunized with purified, Recombinant 2019-nCoV Nucleocapsid Protein (His Tag). The specific IgG was purified by Recombinant 2019-nCoV Nucleocapsid Protein affinity purification.

For Research Use Only

Thank you for your recent purchase.
If you would like to learn more about antibodies, please visit www.elabscience.com

Focus on your research
Service for life science

Images



Western Blot analysis of SARS-CoV2-NP protein (PKSR030497) using SARS-COV-2 NP Polyclonal Antibody at dilution of 1:2000

For Research Use Only

Thank you for your recent purchase.

If you would like to learn more about antibodies, please visit www.elabscience.com

**Focus on your research
Service for life science**

Applications: **WB**-Western Blot **IHC**-Immunohistochemistry **IF**-Immunofluorescence **IP**-Immunoprecipitation **FC**-Flow cytometry **ChIP**:Chromatin Immunoprecipitation