

# Apoptosis and Cell Health Detection Kits

— Precise profiling of cellular status

## Multiple Product Types

Cover multiple cell function indicators such as cell apoptosis, proliferation, cycle, and viability

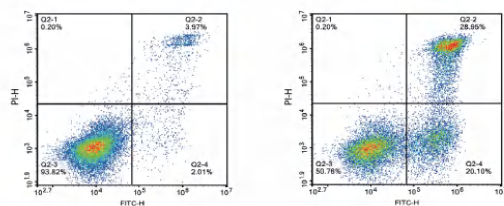
## High Sensitivity and Specificity

The kits use optimized components, which can accurately detect different cell functions

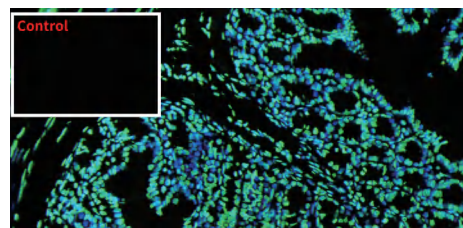
## Simple and Ease to Use

The experimental procedures have been optimized multiple times, featuring simple operations

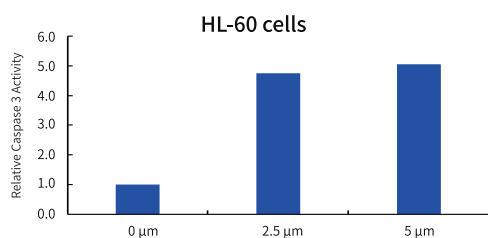
## Elabscience® Hot-selling Apoptosis Detection Kits Results



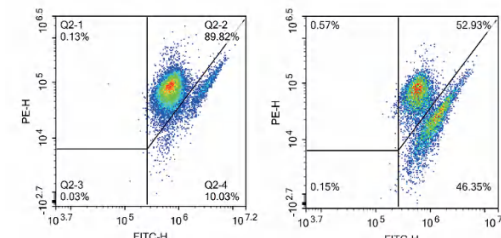
Jurkat cells without Camptothecin treated (left) or treated with 5  $\mu\text{m}$  Camptothecin (right) for 4 h, detected with **Annexin V-FITC/PI Apoptosis Kit (E-CK-A211)**



Mouse colon tissue, treated with DNase I for 10 min (Control: without DNase I treated), detected with **One-step TUNEL In Situ Apoptosis Kit (Green, FITC) (E-CK-A320)**



HL-60 cells, treated with different concentrations of Camptothecin for 4 h, detected the changes in Caspase3/7 enzyme activity with **Caspase 3/7 Activity Assay Kit (E-CK-A383)**

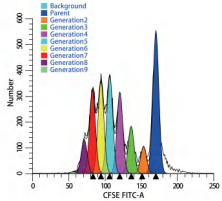
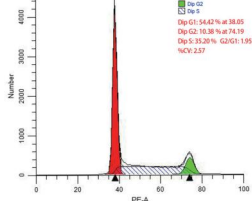
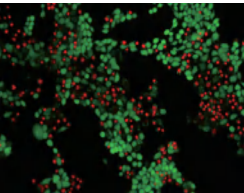
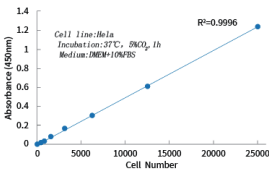


Jurkat cells, normal culture (left), treated with 5  $\mu\text{m}$  Camptothecin for 4 h (right), detected with **Mitochondrial Membrane Potential Assay Kit (E-CK-A301)**

## Elabscience® Hot-selling Apoptosis Detection Kits

Product Name	Cat. No.	Size
Annexin V-FITC/PI Apoptosis Kit	E-CK-A211	20/50/100/200 Assays
One-step TUNEL In Situ Apoptosis Kit (Green, FITC)	E-CK-A320	20/50/100 Assays
Caspase 3/7 Activity Assay Kit	E-CK-A383	20/50/100 Assays
Mitochondrial Membrane Potential Assay Kit (with JC-1)	E-CK-A301	20/50/100 Assays

## Elabscience® Hot-selling Cell Health Detection Kits Results

<p>Mouse spleen cells co-cultured with mature DC cells, detected with <b>CFSE Cell Division Tracker Kit (E-CK-A345)</b></p>			<p>HeLa cells treated with 1 µg/mL Paclitaxel for 6 h, fixed overnight at -20°C, detected with <b>Cell Cycle Assay Kit (Red Fluorescence) (E-CK-A351)</b></p>
<p>4T1 cells treated with 5 µM Camptothecin for 4 h, detected with <b>Calcein AM/PI Double Staining Kit (E-CK-A354)</b></p>			<p>Detection result of HeLa cells at different concentrations incubated with <b>Enhanced Cell Counting Kit 8 (WST-8/CCK8) (E-CK-A362)</b> for 1 h</p>

## Elabscience® Hot-selling Cell Health Detection Kits

Product Name	Cat. No.	Size
CFSE Cell Division Tracker Kit	E-CK-A345	500/2000 Assays
Cell Cycle Assay Kit (Red Fluorescence)	E-CK-A351	20/50/100 Assays
Calcein AM/PI Double Staining Kit	E-CK-A354	100/500/2000 Assays
Enhanced Cell Counting Kit 8 (WST-8/CCK8)	E-CK-A362	100/500 Tests

## Elabscience® Apoptosis and Cell Health Detection Kits Citations

Product Name	Title	Journal (Year)
Calcein AM/PI Double Staining Kit	Injectable ultrasonic sensor for wireless monitoring of intracranial signals	<i>Nature</i> (2024)
One-step TUNEL In Situ Apoptosis Kit (Green, Elab Fluor®488)	Prolonged sleep deprivation induces a cytokine-storm-like syndrome in mammals	<i>Cell</i> (2023)
Annexin V-FITC/PI Apoptosis Kit	MARCKSL1-2 reverses docetaxel-resistance of lung adenocarcinoma cells by recruiting SUZ12 to suppress HDAC1 and elevate miR-200b	<i>Molecular Cancer</i> (2022)
One-step TUNEL In Situ Apoptosis Kit (Green, FITC)	Cellular plasticity of the bone marrow niche promotes hematopoietic stem cell regeneration	<i>Nature Genetics</i> (2022)
Mitochondrial Membrane Potential Assay Kit (with JC-1)	Targeted transplantation of engineered mitochondrial compound promotes functional recovery after spinal cord injury by enhancing macrophage phagocytosis	<i>Bioactive Materials</i> (2023)

For more citation information, please visit [www.elabscience.com](http://www.elabscience.com)

## Elabscience Bionovation Inc.

Toll-free: 1-888-852-8623

Tel: 1-832-243-6086

Fax: 1-832-243-6017

Web: [www.elabscience.com](http://www.elabscience.com)

Email: [orders@elabscience.com](mailto:orders@elabscience.com); [techsupport@elabscience.com](mailto:techsupport@elabscience.com)