

Elabscience®

# EasySort™ Cell Isolation Products



## Efficient Cell Isolation

Superparamagnetic beads for enhanced performance, delivering a purity of up to 99%



## Simple and Fast Workflow

Column-free processing simplifies the procedure, enabling isolation in as little as 18 min



## High Compatibility

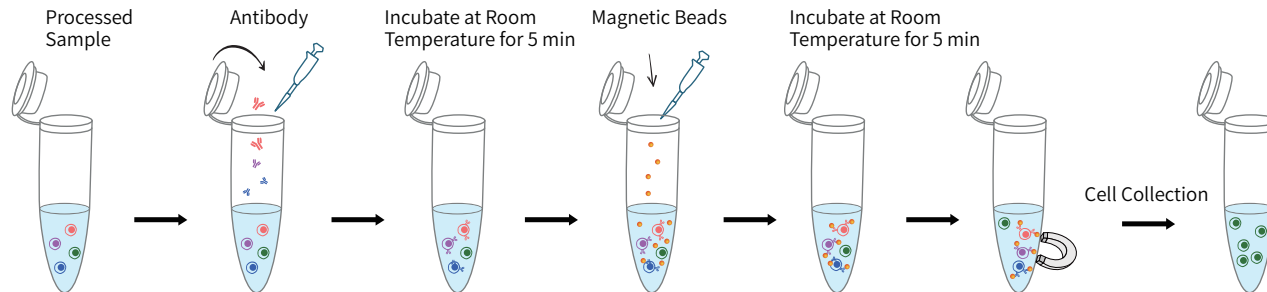
Suitable for a wide range of sample types and diverse cell isolation needs



## Reliable Quality

Every batch undergoes rigorous quality control to ensure consistent and reliable results

## Operating Procedure of EasySort™ Cell Isolation Kits



## Elabscience® EasySort™ Cell Isolation Products

Product Name	Cat. No.	Size
EasySort™ Human Naïve Pan T Cell Isolation Kit	MIH006N	10/100/200 Assays
EasySort™ Human Naïve CD4+T Cell Isolation Kit	MIH007N	10/100/200 Assays
EasySort™ Human Naïve CD8+ T Cell Isolation Kit	MIH008N	10/100/200 Assays
EasySort™ Mouse Pan-Naïve T Cell Isolation Kit	MIM006N	10/100/200 Assays
EasySort™ Mouse Naïve CD4+T Cell Isolation Kit	MIM007N	10/100/200 Assays
EasySort™ Mouse Naïve CD8+T Cell Isolation Kit	MIM008N	10/100/200 Assays
EasySort™ Mouse CD3+T Cell Isolation Kit	MIM001N	10/100/200 Assays
EasySort™ Mouse CD4+T Cell Isolation Kit	MIM002N	10/100/200 Assays
EasySort™ Mouse CD8+T Cell Isolation Kit	MIM003N	10/100/200 Assays
EasySort™ Mouse B Cell Isolation Kit	MIM004N	10/100/200 Assays
EasySort™ Mouse NK Cell Isolation Kit	MIM005N	10/100/200 Assays
EasySort™-5 Magnet	EC001	1 Unit

Starting Material Cell Number:  $1 \times 10^7$  cells per assay

# Experimental Results

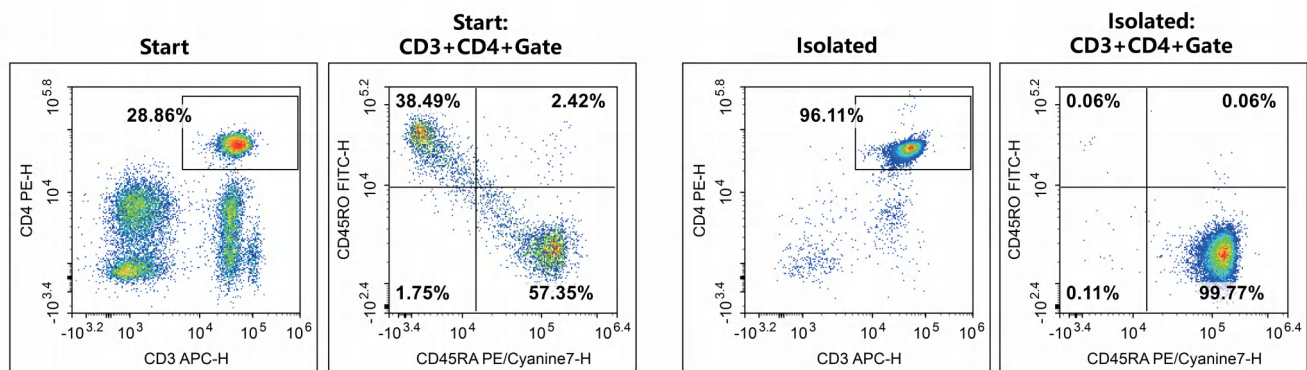


Fig. 1. Human Naive CD4<sup>+</sup>T cells were isolated using the EasySort™ Human Naive CD4<sup>+</sup>T Cell Isolation Kit (MIH007N) Naive CD4<sup>+</sup> T (CD3<sup>+</sup>CD4<sup>+</sup>CD45RO<sup>-</sup>/CD45RA<sup>+</sup>) cells were isolated from the Human PBMC, and were stained with APC Anti-Human CD3 Antibody[OKT-3] (E-AB-F1001E), PE Anti-Human CD4 Antibody[RPA-T4] (E-AB-F1109D), FITC Anti-Human CD45RO Antibody[UCHL1](E-AB-F1139C) and PE/Cyanine7 Anti-Human CD45RA Antibody[HI100] (E-AB-F1052H). The initial and final purities were 16.55% and 95.89%, respectively.

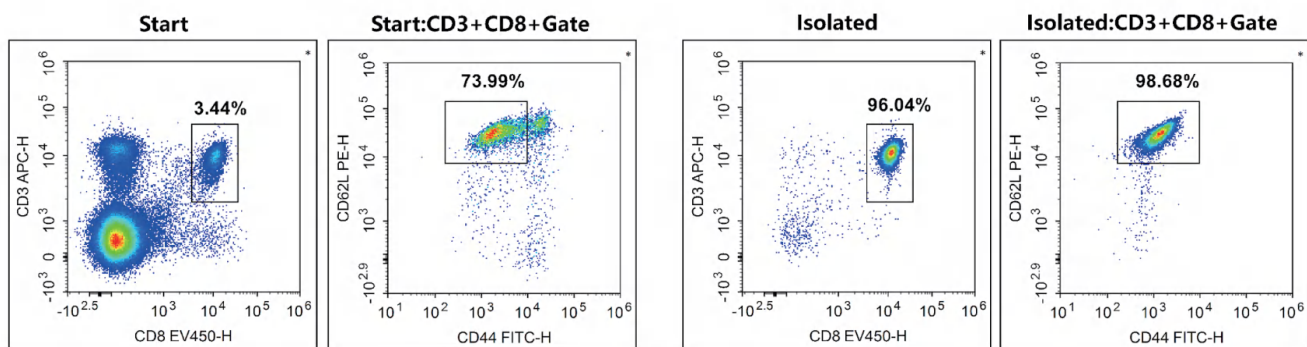


Fig. 2. Mouse Naive CD8<sup>+</sup>T cells were isolated using the EasySort™ Mouse Naive CD8<sup>+</sup>T Cell Isolation Kit (MIM008N) Naive CD8<sup>+</sup> T (CD3<sup>+</sup>CD8<sup>+</sup>CD44<sup>-low</sup>CD62L<sup>high</sup>) cells were isolated from the spleen cells of C57BL/6 mice, and were stained with APC Anti-Mouse CD3ε Antibody[145-2C11](E-AB-F1103E), Elab Fluor® Violet 450 Anti-Mouse CD8a Antibody[53-6.7](E-AB-F1104Q), FITC Anti-Mouse CD44 Antibody[NIM-R8](AN00917C) and PE Anti-Mouse CD62L Antibody[MEL-14](E-AB-F1011D). The initial and final purities were 2.55% and 94.77%, respectively.

## Elabscience® Cell Isolation Related Products

Product Name	Cat. No.	Size	Application
Human CD3/CD28 T Cell Activation Beads	MIH001A	0.2 mL/1 mL/1 mL×5	T Cell Activation
Mouse CD3/CD28 T Cell Activation Beads	MIM001A	0.2 mL/1 mL/1 mL×5	
Recombinant Human Interleukin-2/IL-2 Protein (active)	PKSH034200	20/50 µg	T Cell Proliferation
Recombinant Mouse Interleukin-2/IL-2 Protein (active)	PKSM041523	20/50 µg	
CFSE Cell Division Tracker Kit	E-CK-A345	500/2000 Assays	Cell Proliferation Detection

Elabscience Bionovation Inc.

Toll-free: 1-888-852-8623

Tel: 1-832-243-6086

Fax: 1-832-243-6017

Web: [www.elabscience.com](http://www.elabscience.com)

Email: [orders@elabscience.com](mailto:orders@elabscience.com); [techsupport@elabscience.com](mailto:techsupport@elabscience.com)

EFL055-2511v1