

CD90	5E10	FITC	E-AB-F1167C	20/100T/100T×2	\$75/190/285
		PE	E-AB-F1167D	20/100T/100T×2	\$90/264/396
		APC	E-AB-F1167E	20/100T/100T×2	\$108/288/432
		PE/Cyanine5	E-AB-F1167G	20/100T/100T×2	\$108/260/390
		PE/Cyanine7	E-AB-F1167H	20/100T/100T×2	\$115/285/425
		PE/Cyanine5.5	E-AB-F1167I	20/100T/100T×2	\$115/285/425
		PerCP/Cyanine5.5	E-AB-F1167J	20/100T/100T×2	\$115/342/510
		Elab Fluor® 647	E-AB-F1167M	20/100T/100T×2	\$98/242/360
		PE/Elab Fluor® 594	E-AB-F1167P	20/100T/100T×2	\$115/285/425
CD105	SN6	PE	E-AB-F1310D	20/100T/100T×2	\$80/240/384
		APC	E-AB-F1310E	20/100T/100T×2	\$100/288/432
		Elab Fluor® 488	E-AB-F1310L	20/100T/100T×2	\$85/220/330
		Elab Fluor® 647	E-AB-F1310M	20/100T/100T×2	\$85/220/330
CD117/ c-Kit	104D2	FITC	E-AB-F1150C	20/100T/100T×2	\$75/220/330
		PE	E-AB-F1150D	20/100T/100T×2	\$75/220/330
		APC	E-AB-F1150E	20/100T/100T×2	\$90/240/370

This table shows only some fluorochromes, we also offer other fluorochromes for selection.

Mouse					
Marker	Clone No.	Fluorochrome	Catalog Number	Size	Price
CD38	NIMR5	FITC	E-AB-F1193C	50/100T/100T×2	\$28/48/72
		PE	E-AB-F1193D	50/100T/100T×2	\$28/48/72
		APC	E-AB-F1193E	50/100T/100T×2	\$34/58/87
CD44	IM7	FITC	E-AB-F1100C	20/100T/100T×2	\$30/90/150
		PE	E-AB-F1100D	20/100T/100T×2	\$30/108/180
		APC	E-AB-F1100E	20/100T/100T×2	\$40/100/160
CD90	M5/49.4.1	FITC	E-AB-F1283C	50/100T/100T×2	\$20/33/57
		PE	E-AB-F1283D	50/100T/100T×2	\$20/33/57
		APC	E-AB-F1283E	50/100T/100T×2	\$22/40/69
CD117/ c-Kit	2B8	FITC	E-AB-F1092C	50/100T/100T×2	\$56/95/145
		PE	E-AB-F1092D	50/100T/100T×2	\$56/95/145
		APC	E-AB-F1092E	50/100T/100T×2	\$68/115/175
CD150/ SLAM	TC15-12F12.2	FITC	E-AB-F1177C	50/100T/100T×2	\$40/68/120
		PE	E-AB-F1177D	50/100T/100T×2	\$40/68/120
		APC	E-AB-F1177E	50/100T/100T×2	\$40/69/125
Ly6A/ E(Sca-1)	D7	FITC	E-AB-F1191C	50/100T/100T×2	\$42/60/90
		PE	E-AB-F1191D	50/100T/100T×2	\$42/60/90
		APC	E-AB-F1191E	50/100T/100T×2	\$48/72/108

This table shows only some fluorochromes, we also offer other fluorochromes for selection.

We also provide free flow cytometry panel design, for details please visit [www.elabsience.com](http://www.elabsience.com) to consult our technical support.

Elabsience Bionovation Inc.

For Research Use Only

Toll-free: 1-888-852-8623

Tel: 1-832-243-6086

Fax: 1-832-243-6017

Web: [www.elabsience.com](http://www.elabsience.com)

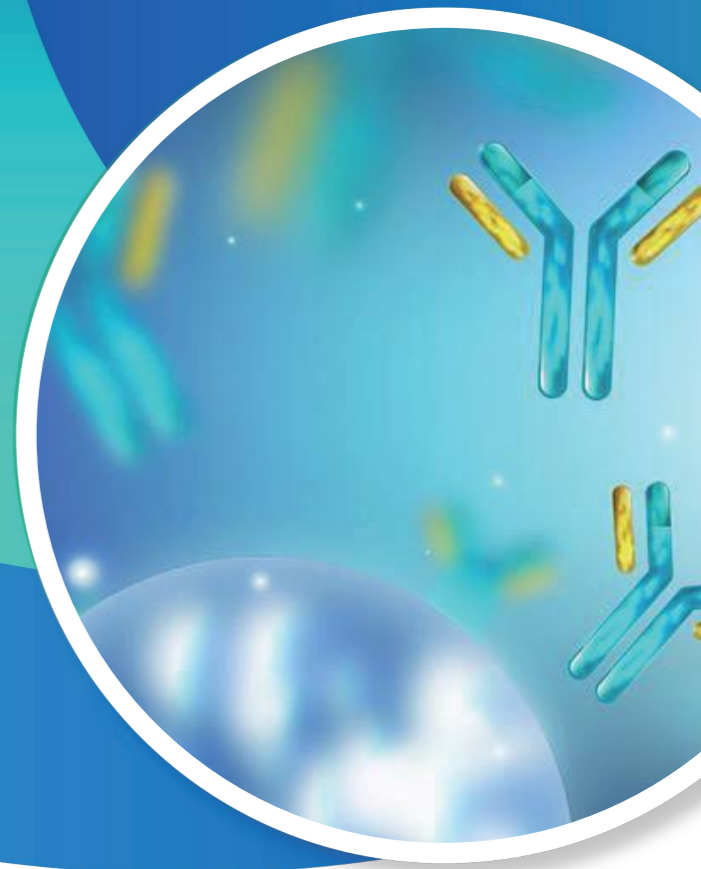
Email: [orders@elabsience.com](mailto:orders@elabsience.com) [techsupport@elabsience.com](mailto:techsupport@elabsience.com)

EBR094-2601v1

# Elabsience®

## Featured Flow Cytometry Antibodies

A Reliable Research Partner in Life Science and Medicine



[www.elabsience.com](http://www.elabsience.com)

Elabsience Bionovation Inc.

# Elabscience® Featured Flow Cytometry Antibodies



Elabscience® Flow Cytometry antibodies have a wide range of dye choices and a wide range of both intracellular and extracellular protein targets to choose from, and the labeling ability and affinity have been validated. With selected high-quality FACS monoclonal antibodies and excellent fluorescent labeling technology, Elabscience® Flow Cytometry antibodies are dedicated to help you efficiently identify immune cells and easily identify cell activation status.

## Blood and Lymphocyte Related Antibodies

Human					
Marker	Clone No.	Fluorochrome	Catalog Number	Size	Price
CD3	OKT-3	AF/LE Purified	E-AB-F10010	50/500 µg/1 mg	\$75/245/445
		Purified	E-AB-F1001A	25/100 µg	\$26/80
		Biotin	E-AB-F1001B	25/100 µg	\$30/80
		FITC	E-AB-F1001C	20/100T/100T×2	\$18/45/82
		PE	E-AB-F1001D	20/100T/100T×2	\$20/60/100
		APC	E-AB-F1001E	20/100T/100T×2	\$24/65/115
		PE/Cyanine7	E-AB-F1001H	20/100T/100T×2	\$80/192/240
		PerCP/Cyanine5.5	E-AB-F1001J	20/100T/100T×2	\$70/156/240
	UCHT1	AF/LE Purified	E-AB-F12300	50/500 µg/1 mg	\$75/245/445
		Purified	E-AB-F1230A	25/100 µg	\$24/80
		Biotin	E-AB-F1230B	25/100 µg	\$30/82
		FITC	E-AB-F1230C	20/100T/100T×2	\$15/45/75
		PE	E-AB-F1230D	20/100T/100T×2	\$20/72/108
		APC	E-AB-F1230E	20/100T/100T×2	\$24/65/115
		PerCP	E-AB-F1230F	20/100T/100T×2	\$102/228/276
		PE/Cyanine7	E-AB-F1230H	20/100T/100T×2	\$102/228/276
		PerCP/Cyanine5.5	E-AB-F1230J	20/100T/100T×2	\$110/270/324
		Elab Fluor® 488	E-AB-F1230L	20/100T/100T×2	\$85/220/330
		Elab Fluor® Violet 450	E-AB-F1230Q	20/100T/100T×2	\$52/130/200
		Elab Fluor® Red 780	E-AB-F1230S	20/100T/100T×2	\$52/130/200

The Products are for Research Use Only

CD4	RPA-T4	FITC	E-AB-F1109C	20/100T/100T×2	\$13/42/72	
		PE	E-AB-F1109D	20/100T/100T×2	\$20/60/90	
		APC	E-AB-F1109E	20/100T/100T×2	\$24/60/95	
		PE/Cyanine5	E-AB-F1109G	20/100T/100T×2	\$80/192/240	
		PE/Cyanine7	E-AB-F1109H	20/100T/100T×2	\$100/228/276	
		Elab Fluor® Violet 450	E-AB-F1109Q	20/100T/100T×2	\$52/130/200	
	SK3	FITC	E-AB-F1352C	20/100T/100T×2	\$17/50/102	
		PE	E-AB-F1352D	20/100T/100T×2	\$25/70/120	
		APC	E-AB-F1352E	20/100T/100T×2	\$120/330/510	
		PerCP	E-AB-F1352F	20/100T/100T×2	\$110/310/480	
		PE/Cyanine5	E-AB-F1352G	20/100T/100T×2	\$80/210/330	
		PE/Cyanine7	E-AB-F1352H	20/100T/100T×2	\$110/280/420	
		Elab Fluor® 488	E-AB-F1352L	20/100T/100T×2	\$110/280/420	
		Elab Fluor® 647	E-AB-F1352M	20/100T/100T×2	\$80/210/330	
PE/Elab Fluor® 594	E-AB-F1352P	20/100T/100T×2	\$80/260/390			
Elab Fluor® Violet 450	E-AB-F1352Q	20/100T/100T×2	\$80/260/390			
CD8a	OKT-8	FITC	E-AB-F1110C	20/100T/100T×2	\$18/50/90	
		PE	E-AB-F1110D	20/100T/100T×2	\$20/60/105	
		APC	E-AB-F1110E	20/100T/100T×2	\$35/70/110	
		PE/Cyanine7	E-AB-F1110H	20/100T/100T×2	\$62/156/240	
		PerCP/Cyanine5.5	E-AB-F1110J	20/100T/100T×2	\$62/156/240	
	HIT8a	Purified	E-AB-F1271A	25/100 µg	\$24/80	
		FITC	E-AB-F1271C	20/100T/100T×2	\$15/50/90	
		PE	E-AB-F1271D	20/100T/100T×2	\$20/60/100	
		Elab Fluor® 488	E-AB-F1271L	20/100T/100T×2	\$80/228/342	
		CD11b	ICRF44	FITC	E-AB-F1146C	20/100T/100T×2
PE	E-AB-F1146D			20/100T/100T×2	\$30/90/170	
APC	E-AB-F1146E			20/100T/100T×2	\$30/120/192	
M1/70	FITC		E-AB-F1081C	50/100T/100T×2	\$20/33/57	
	PE		E-AB-F1081D	50/100T/100T×2	\$20/33/57	
	APC		E-AB-F1081E	50/100T/100T×2	\$22/40/69	
	PerCP		E-AB-F1081F	50/100T/100T×2	\$32/57/86	
	CD14		M5E2	FITC	E-AB-F1209C	20/100T/100T×2
PE				E-AB-F1209D	20/100T/100T×2	\$48/120/192
APC				E-AB-F1209E	20/100T/100T×2	\$48/120/192
CD16	3G8	Purified	E-AB-F1236A	25/100 µg	\$54/110	
		FITC	E-AB-F1236C	20/100T/100T×2	\$64/190/285	
		PE	E-AB-F1236D	20/100T/100T×2	\$75/190/285	
		APC	E-AB-F1236E	20/100T/100T×2	\$90/220/330	
CD19	HI19a	Purified	E-AB-F1304A	25/100 µg	\$50/80	
		FITC	E-AB-F1304C	20/100T/100T×2	\$35/100/160	
		PE	E-AB-F1304D	20/100T/100T×2	\$20/60/90	
		APC	E-AB-F1304E	20/100T/100T×2	\$35/100/160	
		PE/Cyanine5	E-AB-F1304G	20/100T/100T×2	\$90/220/330	
		PE/Cyanine7	E-AB-F1304H	20/100T/100T×2	\$98/240/360	
		Elab Fluor® 647	E-AB-F1304M	20/100T/100T×2	\$80/228/342	
		PE/Elab Fluor® 594	E-AB-F1304P	20/100T/100T×2	\$85/240/360	
		Elab Fluor® Violet 450	E-AB-F1304Q	20/100T/100T×2	\$85/240/360	
		CB19	FITC	E-AB-F1004C	20/100T/100T×2	\$35/100/160
	PE		E-AB-F1004D	20/100T/100T×2	\$20/60/90	
	APC		E-AB-F1004E	20/100T/100T×2	\$30/85/130	
	PE/Elab Fluor® 594		E-AB-F1004P	20/100T/100T×2	\$90/220/330	

The Products are for Research Use Only

CD25	BC96	FITC	E-AB-F1194C	20/100T/100T×2	\$35/108/174
		PE	E-AB-F1194D	20/100T/100T×2	\$30/75/130
		APC	E-AB-F1194E	20/100T/100T×2	\$35/90/145
		PE/Cyanine5	E-AB-F1194G	20/100T/100T×2	\$90/264/396
		PE/Cyanine7	E-AB-F1194H	20/100T/100T×2	\$90/264/396
		PE/Cyanine5.5	E-AB-F1194I	20/100T/100T×2	\$90/220/330
		PerCP/Cyanine5.5	E-AB-F1194J	20/100T/100T×2	\$64/264/396
		Elab Fluor® 488	E-AB-F1194L	20/100T/100T×2	\$90/220/330
		Elab Fluor® 647	E-AB-F1194M	20/100T/100T×2	\$90/220/330
		PE/Elab Fluor® 594	E-AB-F1194P	20/100T/100T×2	\$90/220/330
CD45	HI30	FITC	E-AB-F1137C	20/100T/100T×2	\$24/64/98
		PE	E-AB-F1137D	20/100T/100T×2	\$22/63/98
		APC	E-AB-F1137E	20/100T/100T×2	\$35/90/135
		PerCP	E-AB-F1137F	20/100T/100T×2	\$100/228/276
		PE/Cyanine7	E-AB-F1137H	20/100T/100T×2	\$100/228/276
		PerCP/Cyanine5.5	E-AB-F1137J	20/100T/100T×2	\$120/264/324
		PE/Elab Fluor® 594	E-AB-F1137P	20/100T/100T×2	\$52/130/200
		Elab Fluor® Violet 450	E-AB-F1137Q	20/100T/100T×2	\$52/130/200
CD56/ NCAM	5.1H11	FITC	E-AB-F1239C	20/100T/100T×2	\$75/190/285
		PE	E-AB-F1239D	20/100T/100T×2	\$75/228/342
		APC	E-AB-F1239E	20/100T/100T×2	\$90/264/396
		Elab Fluor® Violet 450	E-AB-F1239Q	20/100T/100T×2	\$115/285/425
		Elab Fluor® Red 780	E-AB-F1239S	20/100T/100T×2	\$115/285/425
CD68	Y1/82A	Elab Fluor® 488	E-AB-F1299L	20/100T/100T×2	\$89/240/360
		Elab Fluor® 647	E-AB-F1299M	20/100T/100T×2	\$89/240/360
CD69	FN50	FITC	E-AB-F1138C	20/100T/100T×2	\$30/90/138
		PE	E-AB-F1138D	20/100T/100T×2	\$42/108/156
		APC	E-AB-F1138E	20/100T/100T×2	\$50/120/192
CD80	2D10	PE	E-AB-F1232D	20/100T/100T×2	\$66/170/260
		APC	E-AB-F1232E	20/100T/100T×2	\$65/204/312
		PE/Cyanine7	E-AB-F1232H	20/100T/100T×2	\$100/240/360
CD86	BU63	FITC	E-AB-F1012C	20/100T/100T×2	\$75/228/342
		PE	E-AB-F1012D	20/100T/100T×2	\$90/228/342
		APC	E-AB-F1012E	20/100T/100T×2	\$90/264/396
CD163	GHI/61	PerCP/Cyanine5.5	E-AB-F1298J	20/100T/100T×2	\$120/300/450
CD206/ MMR	15-2	FITC	E-AB-F1161C	20/100T/100T×2	\$75/190/285
		APC	E-AB-F1161E	20/100T/100T×2	\$108/264/296
CD274/ PD-L1	29E.2A3	FITC	E-AB-F1133C	20/100T/100T×2	\$55/145/220
		PE	E-AB-F1133D	20/100T/100T×2	\$90/204/312
		APC	E-AB-F1133E	20/100T/100T×2	\$90/204/312
HLA-A,B,C	W6/ 32	Biotin	E-AB-F1130B	25/100 µg	\$36/82
		FITC	E-AB-F1130C	20/100T/100T×2	\$55/145/220
		PE	E-AB-F1130D	20/100T/100T×2	\$65/170/260
		APC	E-AB-F1130E	20/100T/100T×2	\$90/204/312
HLA-DR	L243	FITC	E-AB-F1111C	20/100T/100T×2	\$40/120/192
		PE	E-AB-F1111D	20/100T/100T×2	\$45/120/192
		APC	E-AB-F1111E	20/100T/100T×2	\$62/144/228
IFN-γ	B27	FITC	E-AB-F1196C	20/100T/100T×2	\$75/228/342
		PE	E-AB-F1196D	20/100T/100T×2	\$75/228/342
		APC	E-AB-F1196E	20/100T/100T×2	\$90/264/396
IL-17A	BL168	FITC	E-AB-F1173C	20/100T/100T×2	\$75/228/342
		PE	E-AB-F1173D	20/100T/100T×2	\$90/228/342
		APC	E-AB-F1173E	20/100T/100T×2	\$100/264/396

This table shows only some fluorochromes, we also offer other fluorochromes for selection.

The Products are for Research Use Only

Mouse					
Marker	Clone No.	Fluorochrome	Catalog Number	Size	Price
CD3	17A2	FITC	E-AB-F1013C	50/100T/100T×2	\$20/33/57
		PE	E-AB-F1013D	50/100T/100T×2	\$20/33/57
		APC	E-AB-F1013E	50/100T/100T×2	\$22/40/69
		PerCP	E-AB-F1013F	50/100T/100T×2	\$32/57/86
		PerCP/Cyanine5.5	E-AB-F1013J	50/100T/100T×2	\$32/57/86
		Elab Fluor® Violet 450	E-AB-F1013Q	50/100T/100T×2	\$32/57/86
		Elab Fluor® Red 780	E-AB-F1013S	50/100T/100T×2	\$32/57/86
		AF/ LE Purified	E-AB-F11030	50/500 µg/1 mg	\$75/245/445
		FITC	E-AB-F1103C	50/100T/100T×2	\$32/57/100
		PE	E-AB-F1103D	50/100T/100T×2	\$32/57/100
CD3ε	145-2C11	APC	E-AB-F1103E	50/100T/100T×2	\$40/69/125
		FITC	E-AB-F1097C	50/100T/100T×2	\$20/33/57
		PE	E-AB-F1097D	50/100T/100T×2	\$20/33/57
		APC	E-AB-F1097E	50/100T/100T×2	\$22/40/69
CD4	GK1.5	PerCP/Cyanine5.5	E-AB-F1097J	50/100T/100T×2	\$32/57/86
		Elab Fluor® Violet 450	E-AB-F1097Q	50/100T/100T×2	\$32/57/86
		FITC	E-AB-F1353C	50/100T/100T×2	\$30/50/70
		PE	E-AB-F1353D	50/100T/100T×2	\$30/50/70
	RM4-5	PerCP/ Cyanine5.5	E-AB-F1353J	50/100T/100T×2	\$70/110/170
		FITC	E-AB-F1104C	50/100T/100T×2	\$20/33/57
		PE	E-AB-F1104D	50/100T/100T×2	\$20/33/57
		APC	E-AB-F1104E	50/100T/100T×2	\$22/40/69
CD8a	53-6.7	PE/Cyanine7	E-AB-F1104H	50/100T/100T×2	\$32/57/86
		PerCP/Cyanine5.5	E-AB-F1104J	50/100T/100T×2	\$32/57/86
		Elab Fluor® Red 780	E-AB-F1104S	50/100T/100T×2	\$32/57/86
		FITC	E-AB-F1081C	50/100T/100T×2	\$20/33/57
		PE	E-AB-F1081D	50/100T/100T×2	\$20/33/57
CD11b	M1/70	APC	E-AB-F1081E	50/100T/100T×2	\$22/40/69
		PerCP	E-AB-F1081F	50/100T/100T×2	\$32/57/86
		FITC	E-AB-F0991C	50/100T/100T×2	\$28/48/78
		PE	E-AB-F0991D	50/100T/100T×2	\$28/48/78
CD11c	N418	APC	E-AB-F0991E	50/100T/100T×2	\$34/58/87
		PE/Cyanine7	E-AB-F0991H	50/100T/100T×2	\$48/72/108
		PerCP/Cyanine5.5	E-AB-F0991J	50/100T/100T×2	\$48/72/108
		Purified	E-AB-F0997A	25/100 µg	\$19/59
CD16/32	2.4G2	FITC	E-AB-F0997C	50/100T/100T×2	\$85/145/220
		PE	E-AB-F0997D	50/100T/100T×2	\$85/145/220
		APC	E-AB-F0997E	50/100T/100T×2	\$85/145/220
		FITC	E-AB-F0986C	50/100T/100T×2	\$28/48/72
CD19	1D3	PE	E-AB-F0986D	50/100T/100T×2	\$28/48/72
		APC	E-AB-F0986E	50/100T/100T×2	\$34/58/87
		PE/Cyanine7	E-AB-F0986H	50/100T/100T×2	\$48/72/108
		FITC	E-AB-F1102C	50/100T/100T×2	\$65/100/160
CD25	PC-61.5.3	PE	E-AB-F1102D	50/100T/100T×2	\$65/100/160
		APC	E-AB-F1102E	50/100T/100T×2	\$65/100/160
		FITC	E-AB-F1136C	50/100T/100T×2	\$33/57/100
CD45	30-F11	PE	E-AB-F1136D	50/100T/100T×2	\$33/57/100
		APC	E-AB-F1136E	50/100T/100T×2	\$40/69/125
		PerCP	E-AB-F1136F	50/100T/100T×2	\$55/86/155
		PE/Cyanine7	E-AB-F1136H	50/100T/100T×2	\$55/86/155
		PerCP/Cyanine5.5	E-AB-F1136J	50/100T/100T×2	\$55/86/155
		Elab Fluor® Violet 450	E-AB-F1136Q	50/100T/100T×2	\$55/86/155
		Elab Fluor® Red 780	E-AB-F1136S	50/100T/100T×2	\$55/86/155

The Products are for Research Use Only

CD49b/ pan-NK cells	DX5	FITC	E-AB-F1116C	50/100T/100T×2	\$42/60/90
		PE	E-AB-F1116D	50/100T/100T×2	\$42/60/90
		APC	E-AB-F1116E	50/100T/100T×2	\$48/72/108
		PerCP	E-AB-F1116F	50/100T/100T×2	\$60/90/162
		PE/Cyanine5	E-AB-F1116G	50/100T/100T×2	\$60/90/162
		PE/Cyanine7	E-AB-F1116H	50/100T/100T×2	\$60/90/162
		PE/Cyanine5.5	E-AB-F1116I	50/100T/100T×2	\$60/90/162
		PerCP/Cyanine5.5	E-AB-F1116J	50/100T/100T×2	\$60/90/162
		Elab Fluor® 488	E-AB-F1116L	50/100T/100T×2	\$60/90/162
		Elab Fluor® 647	E-AB-F1116M	50/100T/100T×2	\$60/90/162
		Elab Fluor® Violet 450	E-AB-F1116Q	50/100T/100T×2	\$60/90/162
		Elab Fluor® Red 780	E-AB-F1116S	50/100T/100T×2	\$180/285/425
		CD62L	MEL-14	FITC	E-AB-F1011C
PE	E-AB-F1011D			50/100T/100T×2	\$35/50/75
APC	E-AB-F1011E			50/100T/100T×2	\$40/60/90
CD80	16-10A1	FITC	E-AB-F0992C	50/100T/100T×2	\$56/95/145
		PE	E-AB-F0992D	50/100T/100T×2	\$56/95/145
		APC	E-AB-F0992E	50/100T/100T×2	\$68/115/175
CD86	GL-1	FITC	E-AB-F0994C	50/100T/100T×2	\$56/95/145
		PE	E-AB-F0994D	50/100T/100T×2	\$56/95/145
		APC	E-AB-F0994E	50/100T/100T×2	\$68/115/175
		PE/Cyanine7	E-AB-F0994H	50/100T/100T×2	\$81/135/240
CD161/ NK1.1	PK136	FITC	E-AB-F0987C	50/100T/100T×2	\$28/48/72
		PE	E-AB-F0987D	50/100T/100T×2	\$28/48/72
		APC	E-AB-F0987E	50/100T/100T×2	\$34/58/87
CD163	S15049F	APC	E-AB-F1295E	50/100T/100T×2	\$85/145/220
		Elab Fluor® 647	E-AB-F1295M	50/100T/100T×2	\$115/185/275
CD206/ MMR	C068C2	FITC	E-AB-F1135C	50/100T/100T×2	\$90/120/190
		PE	E-AB-F1135D	50/100T/100T×2	\$90/120/190
		APC	E-AB-F1135E	50/100T/100T×2	\$90/120/190
		PE/Cyanine7	E-AB-F1135H	50/100T/100T×2	\$115/185/295
CD274/ PD-L1	10F.9G2	FITC	E-AB-F1132C	50/100T/100T×2	\$45/75/115
		PE	E-AB-F1132D	50/100T/100T×2	\$45/75/115
		APC	E-AB-F1132E	50/100T/100T×2	\$55/90/135
F4/80	Cl:A3-1	FITC	E-AB-F0995C	50/100T/100T×2	\$28/48/72
		PE	E-AB-F0995D	50/100T/100T×2	\$28/48/72
		APC	E-AB-F0995E	50/100T/100T×2	\$34/58/87
		PE/Cyanine7	E-AB-F0995H	50/100T/100T×2	\$48/72/108
		PerCP/Cyanine5.5	E-AB-F0995J	50/100T/100T×2	\$48/72/108
		Elab Fluor® Violet 450	E-AB-F0995Q	50/100T/100T×2	\$48/72/108
Foxp3	3G3	FITC	E-AB-F1238C	50/100T/100T×2	\$144/228/342
		PE	E-AB-F1238D	50/100T/100T×2	\$144/228/342
		APC	E-AB-F1238E	50/100T/100T×2	\$174/264/396
IFN-γ	XMG1.2	FITC	E-AB-F1101C	50/100T/100T×2	\$45/75/115
		PE	E-AB-F1101D	50/100T/100T×2	\$45/75/115
		APC	E-AB-F1101E	50/100T/100T×2	\$55/90/135
IL-4	11B11	PE	E-AB-F1204D	50/100T/100T×2	\$85/145/220
		APC	E-AB-F1204E	50/100T/100T×2	\$85/145/220
IL-17A	17F3	FITC	E-AB-F1272C	50/100T/100T×2	\$45/75/115
		PE	E-AB-F1272D	50/100T/100T×2	\$45/75/115
		APC	E-AB-F1272E	50/100T/100T×2	\$55/90/135
	TC11-18H10.1	FITC	E-AB-F1199C	50/100T/100T×2	\$54/90/138
		PE	E-AB-F1199D	50/100T/100T×2	\$54/90/138
		APC	E-AB-F1199E	50/100T/100T×2	\$60/100/160

The Products are for Research Use Only

Ly6C	Monts 1	FITC	E-AB-F1121C	50/100T/100T×2	\$20/33/57
		PE	E-AB-F1121D	50/100T/100T×2	\$20/33/57
		APC	E-AB-F1121E	50/100T/100T×2	\$22/40/69
		PE/Cyanine7	E-AB-F1121H	50/100T/100T×2	\$32/57/86
Ly6G	1A8	Biotin	E-AB-F1108B	25/100 µg	\$45/108
		FITC	E-AB-F1108C	50/100T/100T×2	\$32/57/100
		PE	E-AB-F1108D	50/100T/100T×2	\$32/57/100
		APC	E-AB-F1108E	50/100T/100T×2	\$40/69/125
Ly-6G/Ly-6C (Gr-1)	RB6-8C5	FITC	E-AB-F1120C	50/100T/100T×2	\$20/33/57
		PE	E-AB-F1120D	50/100T/100T×2	\$20/33/57
		APC	E-AB-F1120E	50/100T/100T×2	\$22/40/69
		PerCP	E-AB-F1120F	50/100T/100T×2	\$32/57/86
		PE/Cyanine5	E-AB-F1120G	50/100T/100T×2	\$32/57/86
		PE/Cyanine7	E-AB-F1120H	50/100T/100T×2	\$32/57/86
		PE/Cyanine5.5	E-AB-F1120I	50/100T/100T×2	\$32/57/86
		PerCP/Cyanine5.5	E-AB-F1120J	50/100T/100T×2	\$32/57/86
		Elab Fluor® 488	E-AB-F1120L	50/100T/100T×2	\$32/57/86
		Elab Fluor® 647	E-AB-F1120M	50/100T/100T×2	\$32/57/86
MHC II (I-A/I-E)	M5/114	Elab Fluor® Violet 450	E-AB-F1120Q	50/100T/100T×2	\$32/57/86
		Elab Fluor® Red 780	E-AB-F1120S	50/100T/100T×2	\$32/57/86
		FITC	E-AB-F0990C	50/100T/100T×2	\$28/48/72
		PE	E-AB-F0990D	50/100T/100T×2	\$28/48/72
		APC	E-AB-F0990E	50/100T/100T×2	\$34/58/87

This table shows only some fluorochromes, we also offer other fluorochromes for selection.

## Stem Cell Related Antibodies

Human					
Marker	Clone No.	Fluorochrome	Catalog Number	Size	Price
CD34	4H11	FITC	E-AB-F1324C	20/100T/100T×2	\$66/174/264
		PE/Cyanine5	E-AB-F1324G	20/100T/100T×2	\$85/240/360
		Elab Fluor® 488	E-AB-F1324L	20/100T/100T×2	\$84/216/324
	581	FITC	E-AB-F1143C	20/100T/100T×2	\$75/190/285
		PE	E-AB-F1143D	20/100T/100T×2	\$90/220/330
		APC	E-AB-F1143E	20/100T/100T×2	\$90/264/396
PerCP/Cyanine5.5		E-AB-F1143J	20/100T/100T×2	\$120/312/468	
CD44	IM7	PE/Elab Fluor® 594	E-AB-F1143P	20/100T/100T×2	\$120/260/390
		FITC	E-AB-F1100C	20/100T/100T×2	\$30/90/150
		PE	E-AB-F1100D	20/100T/100T×2	\$30/108/180
CD73	AD2	APC	E-AB-F1100E	20/100T/100T×2	\$40/100/160
		FITC	E-AB-F1242C	20/100T/100T×2	\$75/190/285
		PE	E-AB-F1242D	20/100T/100T×2	\$90/225/340
		APC	E-AB-F1242E	20/100T/100T×2	\$105/260/390
		PE/Cyanine5	E-AB-F1242G	20/100T/100T×2	\$115/285/425
		PE/Cyanine7	E-AB-F1242H	20/100T/100T×2	\$98/285/425
		PE/Cyanine5.5	E-AB-F1242I	20/100T/100T×2	\$115/285/425
		Elab Fluor® 488	E-AB-F1242L	20/100T/100T×2	\$115/285/425
		Elab Fluor® 647	E-AB-F1242M	20/100T/100T×2	\$115/285/425
Elab Fluor® Red 780	E-AB-F1242S	20/100T/100T×2	\$115/285/425		

The Products are for Research Use Only