

Elabscience®

Flow Cytometry Antibody

- ⌘ Elabscience® Introduction
- ⌘ Elabscience® Flow Cytometry Antibody Features
- ⌘ Top-Selling Flow Cytometry Markers
- ⌘ Fluorochrome Dyes
- ⌘ Elabscience® Flow Cytometry Related Reagents

A Reliable Research Partner in Life Science and Medicine

Elabscience Bionovation Inc.

Elabscience® Introduction

Elabscience® stands at the forefront of biotechnology innovation, expertly combining independent design, R&D, manufacturing, and sales to deliver premier reagents and services for cell detection research. Our diverse product portfolio includes advanced solutions for detecting membrane and intracellular proteins (Flow cytometry antibodies), secreted proteins (ELISA kits), cell glycolipid metabolic intermediates and inorganic salts (Metabolism Assays), and comprehensive assessments of cellular function and health (Cell Apoptosis Assay, Cell Cycle Assay, Cell Proliferation/Cytotoxicity/Viability).

28,500 +

Citations

1,000 +

Cooperation Institutions

150 +

Countries and
Regions Worldwide

5

Technical Platforms



ISO9001:2015

Quality Management
System Certification



ISO 14001:2015

Environmental Management
System Certification



CiteAb · 2021

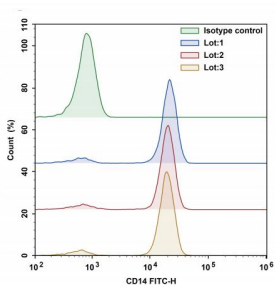
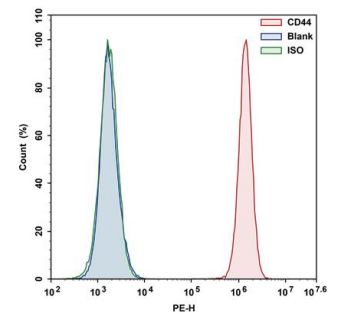
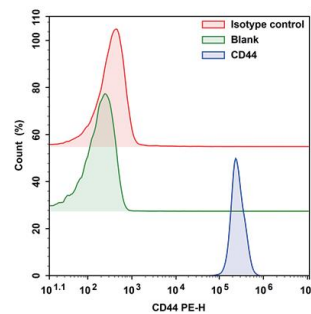
Antibody Supplier
To Watch In 2021

Elabscience® Flow Cytometry Antibody Features

High Specificity

Antibodies exhibit high specificity and demonstrate efficient specific recognition of target antigens.

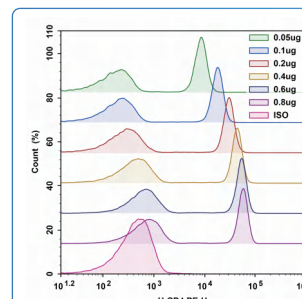
Fig. 1. Detection results of CD44 antibody (E-AB-F1100D) in cell samples (Left: human peripheral blood lymphocytes; Right: human HeLa cells)



High Batch Stability

The fluorescence intensity of the antibody remains highly stable in different batches.

Fig. 2. Detection results of the circumferent gate of human peripheral blood mononuclear cells with FITC Anti-Human CD14 Antibody in different batches



High Antibody Titer

The optimized antibody performs well, showing clear population separation across a range of concentrations.

Fig. 3. Antibody staining performance at varying concentrations

Good Stability

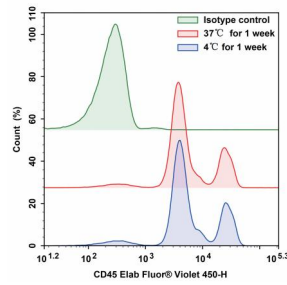


Fig. 4. Detection results of fresh human blood samples using Elab Fluor® Violet 450 Anti-Human CD45 Antibody stored at 4 or 37°C for one week

The antibody retained strong positive signals with clear separation of monocyte, lymphocyte, and granulocyte populations after one week of storage at 37°C before using for the experiment or incubated with samples together.

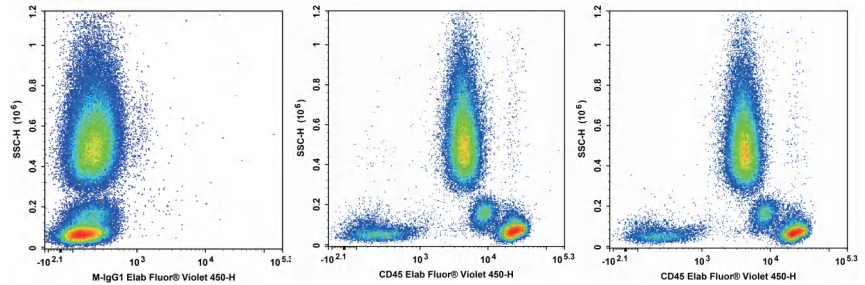


Fig. 5. Detection results of fresh human blood samples using Elab Fluor® Violet 450 Anti-Human CD45 Antibody stored at 4 or 37°C for one week. (Left: negative control; Middle: detection result with antibodies stored at 4°C; Right: detection result with antibodies stored at 37°C)

Top-Selling Flow Cytometry Markers

Elabscience® currently offers over 4,500 flow cytometry antibodies, covering species such as human, mouse, rat and monkey, with a complete range of common human and mouse markers.

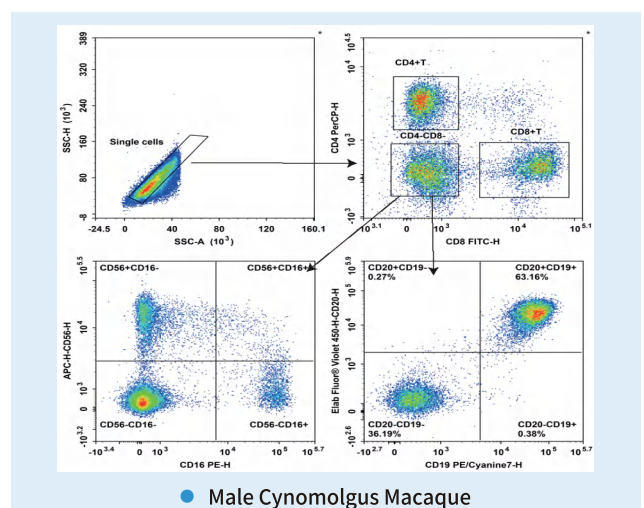
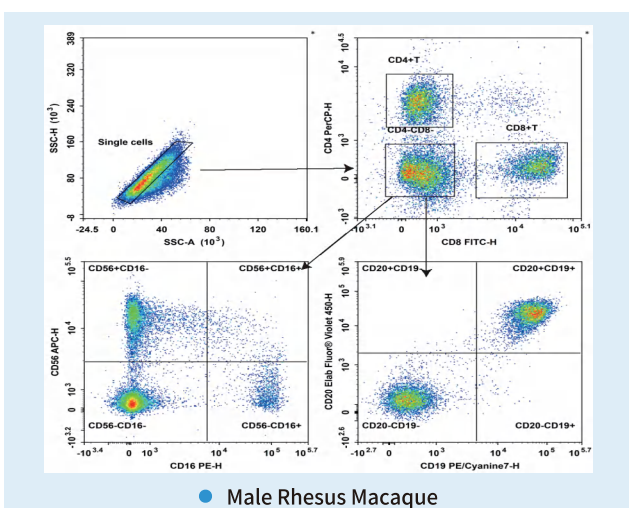
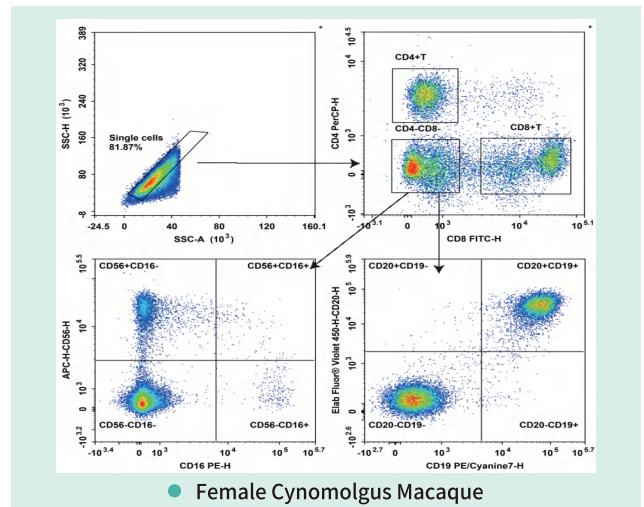
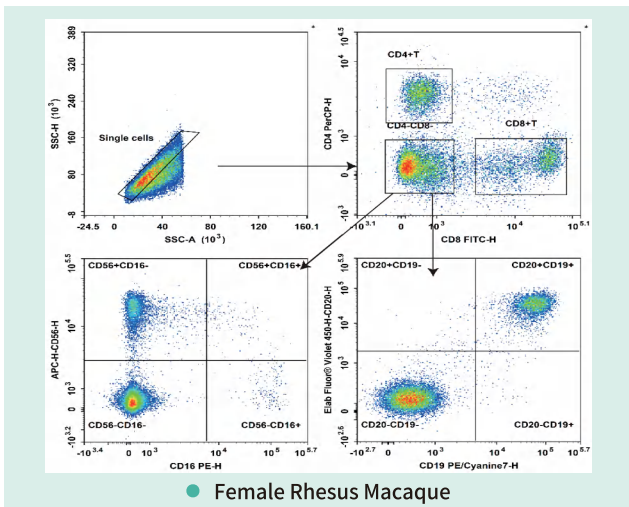
Table 1. Top-Selling Flow Cytometry Detection Panel

Application	Marker	Reactivity	Clone No.
MSC	CD14	Human	M5E2
	CD19*	Human	CB19
	CD34	Human	581
	CD45	Human	HI30
	CD73	Human	AD2
	CD90	Human	5E10
	CD105	Human	SN6
	HLA-DR	Human	L243
Platelet	CD41	Human	10E5-F0061
	CD61	Human	VI-PL2
	CD42a	Human	ALMA.16
	CD42b	Human	HIP1
	CD62P	Human	AK4
Exosome	CD81	Human	1.3.3.22
T/B/NK	CD3	Human	OKT-3
	CD4*	Human	SK3
	CD8a	Human	OKT-8
	CD8*	Human	SK1
	CD16*	Human	3G8
	CD19	Human	HI19a

Application	Marker	Reactivity	Clone No.
T/B/NK	CD20*	Human	2H7
	CD45	Human	HI30
	CD56*	Human	B-A19
Analysis of T cell activation status	CD3e	Mouse	145-2C11
	CD25	Mouse	PC-61.5.3
	CD69	Mouse	H1.2F3
T/NK	CD3e	Mouse	145-2C11
	CD4	Mouse	GK1.5
	CD8a	Mouse	53-6.7
	CD161c/NK1.1	Mouse	PK136

Note: The flow cytometry antibodies marked with * have all been verified by samples of rhesus monkeys and cynomolgus monkeys.

Validation Results of Antibodies in Rhesus and Cynomolgus Monkey Samples



Fluorochrome Dyes

Elabscience® offers 21 types of fluorochrome dyes, meeting the requirements of routine experiments. More fluorochrome dyes are continually being added.

Table 2. Details of Elabscience® Fluorochrome Dye Information*

Dye category	Fluorochrome	Excitation Max (nm)	Emission Max (nm)	Excitation Laser Lines (nm)	Relative Fluorochrome Brightness	Benchmarking dye
Small molecule dye	Elab Bright™ Violet 421	407	423	405	★★★★★★	–
	Elab Fluor® Violet 450	410	450	405	★★☆☆☆☆	Pacific Blue
	Elab Fluor® 488	495	520	488	★★★★☆☆	FITC, Alxa Fluor®488
	FITC	490	530	488	★★★★☆☆	Alexa Fluor®488
	Elab Fluor® Violet 500	410	501	405	★★☆☆☆☆	BD Horizon™ V500
	Elab Bright™ Violet 510	327,405	512	405	★★★★☆☆	–
	Elab Fluor®Violet 540	402	548	405	★★☆☆☆☆	Pacific Orange
	Elab Fluor®Violet 610	421	613	405	★★☆☆☆☆	–
	Elab Fluor® 647	650	670	633/640	★★★★☆☆	Alexa Fluor®647
	Elab Bright™ Violet 650	406	649	405	★★★★★★	–
	Elab Fluor®700	696	719	640	★★★★☆☆	Alexa Fluor®700
	Elab Fluor® Red 780	625	765	633/640	★★☆☆☆☆	–
Macromolecular protein dye	PE	495, 565	575	488/561	★★★★☆☆	APC/Cyanine7
	APC	650	660	633/640	★★★★☆☆	–
	PerCP	440, 480, 675	675	488	★★☆☆☆☆	Alexa Fluor®647
Tandem dye	PE/Elab Fluor® 594	495, 565	620	488/561	★★★★★★	–
	PE/Cyanine5	495, 565, 655	670	488/561	★★★★☆☆	PE-Texas Red
	PerCP/Cyanine5.5	440, 480, 675	675	488	★★★★☆☆	–
	PE/Cyanine5.5	495, 565, 675	690	488/561	★★★★☆☆	–
	PE/Cyanine7	495, 565, 755	775	488/561	★★★★★★	–
	APC/Cyanine7	650, 760	780	633	★★★★☆☆	–

*The dye information in the table is determined based on multiple specificities and the average staining index measured on the instrument. The actual absolute staining index value may vary depending on the instrument platform and instrument configuration (including laser, laser power and filter).

Elabscience® Flow Cytometry Related Reagents (Partial)

Product Name	Size	Application	Cat. No.
10×ACK Lysis Buffer	100 mL/200 mL/500 mL	Lysis of red blood cells in human or mouse blood samples	E-CK-A105
10× RBC Lysis/Fixation Solution	50 Tests/500 Tests	Lysed red blood cells from human whole blood	E-CK-A106
EasySort™ Mouse B Cell Isolation Kit	10 Assays/100 Assays/200 Assays	Isolate B cells from mouse spleen and lymph nodes	MIM004N
EasySort™ Mouse CD3+T Cell Isolation Kit	10 Assays/100 Assays/200 Assays	Isolate CD3+T cells from mouse spleen and lymph nodes	MIM001N
EasySort™ Mouse CD4+T Cell Isolation Kit	10 Assays/100 Assays/200 Assays	Isolate CD4+T cells from mouse spleen and lymph nodes	MIM002N
EasySort™ Mouse CD8+T Cell Isolation Kit	10 Assays/100 Assays/200 Assays	Isolate CD8+T cells from mouse spleen and lymph nodes	MIM003N
EasySort™ Mouse NK Cell Isolation Kit	10 Assays/100 Assays/200 Assays	Isolate NK cells from mouse spleen	MIM005N
Human CD3/CD28 T Cell Activation Beads	0.2 mL/1 mL/1 mL×5	In vitro activation and expansion of T cells from sorted T cells or PBMCs	MIH001A
Mouse CD3/CD28 T Cell Activation Beads	0.2 mL/1 mL/1 mL×5	In vitro activation and expansion of T cells from sorted T cells or mouse spleen	MIM001A
Purified Anti-Mouse CD16/32 Antibody [2.4G2]	25 µg/100 µg	Mouse sample blocking	E-AB-F0997A
EasyStain™ Human Fc Receptor Blocking Solution	50 Tests/200 Tests	Human sample blocking	E-CK-A171
Cell Stimulation and Protein Transport Inhibitor Kit	50 Assays/100 Assays/200 Assays	Cytokines stimulation/transport inhibition	E-CK-A091
Cell Stimulation MIX Kit	50 Assays/500 Assays	Cytokines stimulation	E-CK-A019
Protein Transport Inhibitor MIX	50 Tests/500 Tests	Protein transport inhibition	E-CK-A013
Foxp3/Transcription Factor Staining Kit	20 Assays	Fixation and permeabilization reagents for intracellular antigen staining	E-CK-A108
Intracellular Fixation/Permeabilization Buffer Kit	50 Assays/100 Assays/500 Assays	Intracellular cytokine fixation and permeabilization	E-CK-A109

For more flow cytometry related products, please visit www.elabscience.com or contact local distributors.

Elabscience Bionovation Inc.

Toll-free: 1-888-852-8623

Tel: 1-832-243-6086

Fax: 1-832-243-6017

Web: www.elabscience.com

Email: orders@elabscience.com; techsupport@elabscience.com