

Still using xylene for deparaffinization of tissue sections?
Can't do immunohistochemistry without a fume hood?

Tissue section deparaffinization taking too long?

The traditional dewaxing repair process cumbersome?

Eliminate the cumbersome process of traditional dewaxing and antigen retrieval by using our high-sensitivity, highly specific, easy-to-use, and environment ally friendly kit to optimize your immunohistochemistry experiments!



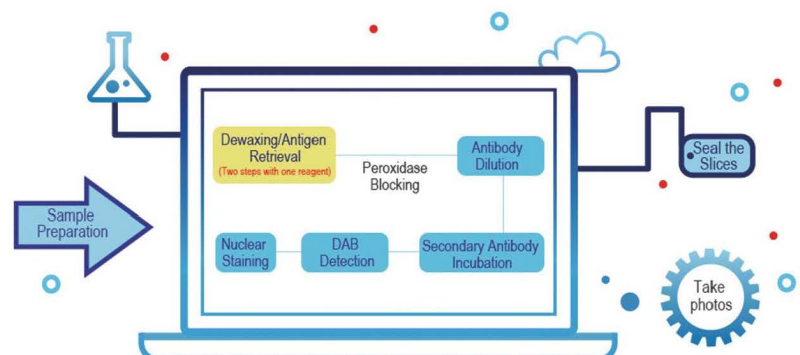
Super Plus™ High Sensitive and Rapid Immunohistochemical Kit

New experience of IHC experiment

- 1 Relevant reagents are supplied all together.
- 2 Eliminate the traditional dewaxing and antigen retrieval steps, making it easy to operate.
- 3 Dewaxing and antigen retrieval are carried out simultaneously, shortening the operation time.
- 4 Good specificity, high sensitivity.
- 5 Safe, non-toxic, and environmentally friendly.
- 6 High-sensitivity secondary antibody and DAB chromogenic solution, meeting the antibody requirements for both rabbit and mouse species.

The whole process only takes 3 hours

One kit will help you out of all the process!

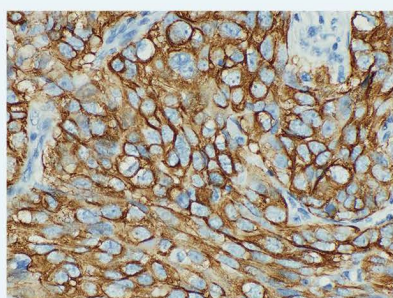


Super Plus™ High Sensitive and Rapid Immunohistochemical Kit

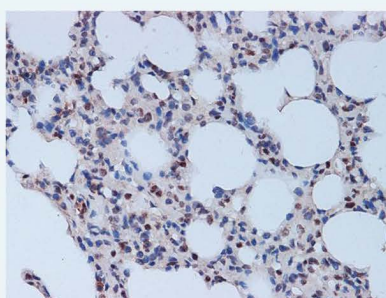
Product Recommendation

Cat	Product Name	Size
E-IR-R220	Super Plus™ High Sensitive and Rapid Immunohistochemical Kit(pH9.0)	3 mL/ 10 mL
E-IR-R221	Super Plus™ High Sensitive and Rapid Immunohistochemical Kit(pH6.0)	3 mL/ 10 mL

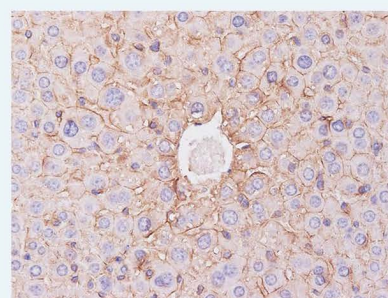
Display of Super Plus™ High Sensitive and Rapid Immunohistochemical Kit Results



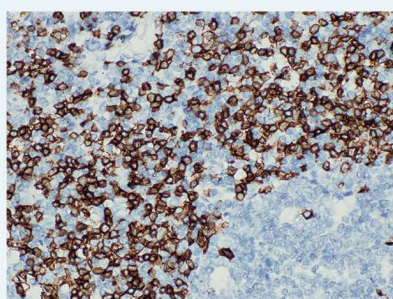
CK7 Human breast cancer



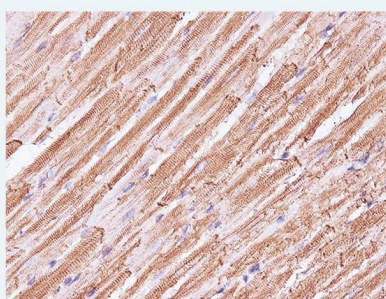
Caspase 3 Rat lung



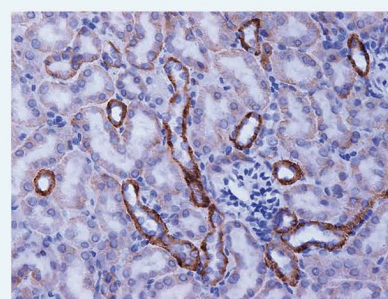
β -Catenin Mouse liver



CD3 Human tonsil



Dasmin Rat heart



CYP27B1 Mouse Kidney

Do you want to get more information about IHC-related reagents? 
Please contact Elabscience® or your local distributor.

Elabscience Bionovation Inc.

☎ Toll-free: 1-888-852-8623

☎ Tel: 1-832-243-6086

☎ Fax: 1-832-243-6017

🌐 Web: www.elabscience.com

✉ Email: orders@elabscience.com; techsupport@elabscience.com