

Elabscience®

UNCOATED ELISA KITS

Scalable. Reliable. Cost-Aware.

Elabscience® Uncoated ELISA Kit offers a versatile and cost-effective option that enables stable workflows while delivering high-quality results.



Cost-Effective

Precision that doesn't break the budget.



Broad Compatibility

Multiple targets, cross-platform, boundless potential.



Consistent & Reliable

High-caliber ensuring both stability and reproducibility.



Flexible Packaging

Customizable formats (96 T*5/96 T*15) to fit Your workflow and assay needs.

Performance Demonstration

Elabscience® Uncoated ELISA Kits undergo rigorous performance testing to meet customer requirements for specificity, sensitivity, and stability.

Precision and Stability

Intra & inter-assay CVs <10%, excellent stability under accelerated conditions (37°C), and strong resistance to interference.

Table 1. Intra & Inter-Assay Precision Validation of Human IL-6 Uncoated ELISA Kit

| | Intra-Assay Precision | | | Inter-Assay Precision | | |
|--------------------|-----------------------|--------|--------|-----------------------|--------|---------|
| Sample | 1 | 2 | 3 | 1 | 2 | 3 |
| n | 20 | 20 | 20 | 20 | 20 | 20 |
| Mean (pg/mL) | 96.92 | 301.79 | 896.43 | 103.56 | 287.74 | 1041.26 |
| Standard Deviation | 5.02 | 14.39 | 54.14 | 6.32 | 23.59 | 62.54 |
| CV (%) | 5.18 | 4.77 | 6.04 | 6.10 | 8.20 | 6.01 |

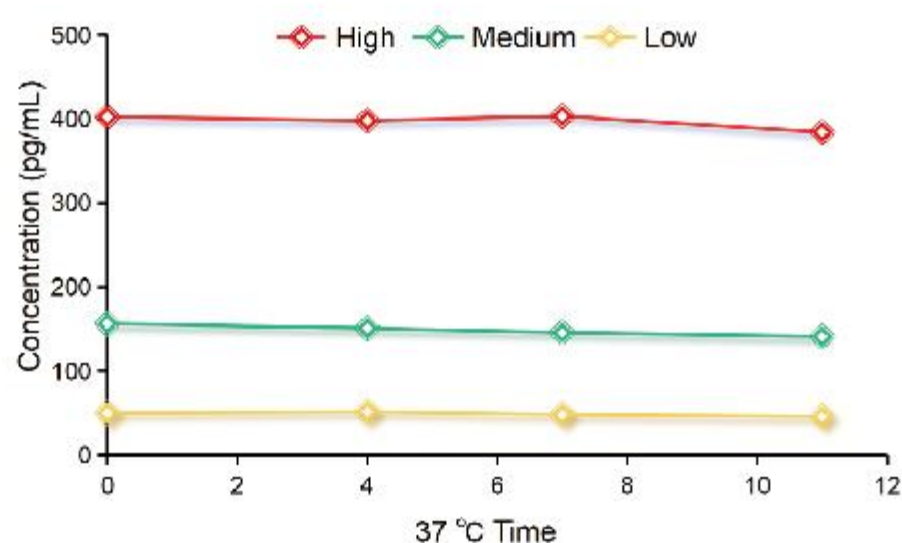


Fig. 1 Accelerated stability assessed at 37°C across multiple concentrations on days 0, 4, 7, and 11 using a single ELISA kit batch.

Inter-Batch Consistency

Confirmed stability and consistency for the Human IFN- γ Uncoated ELISA Kit, with performance data spanning 2022–2025.

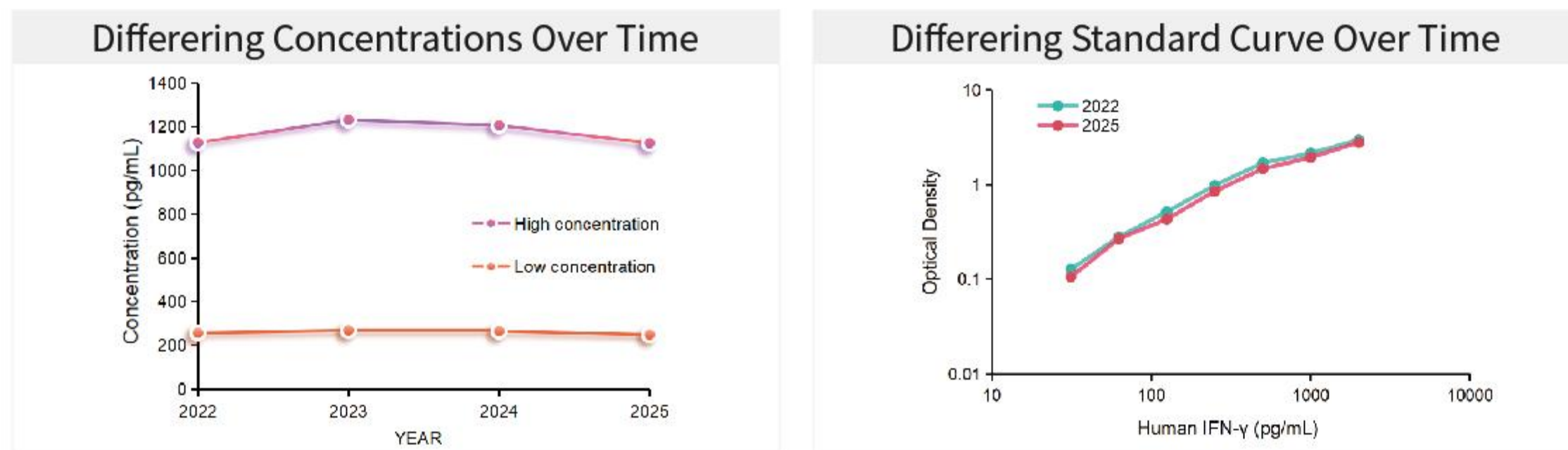


Fig. 2 Comparison of High and Low Concentration Human IFN- γ QC Samples (Left) and Standard Curves (Right) from 2022 to 2025

Linear Dilution & Spike Recovery

Exemplary performance, Consistent 80–120% recovery across sample types & diverse matrices — Accurate quantification guaranteed.

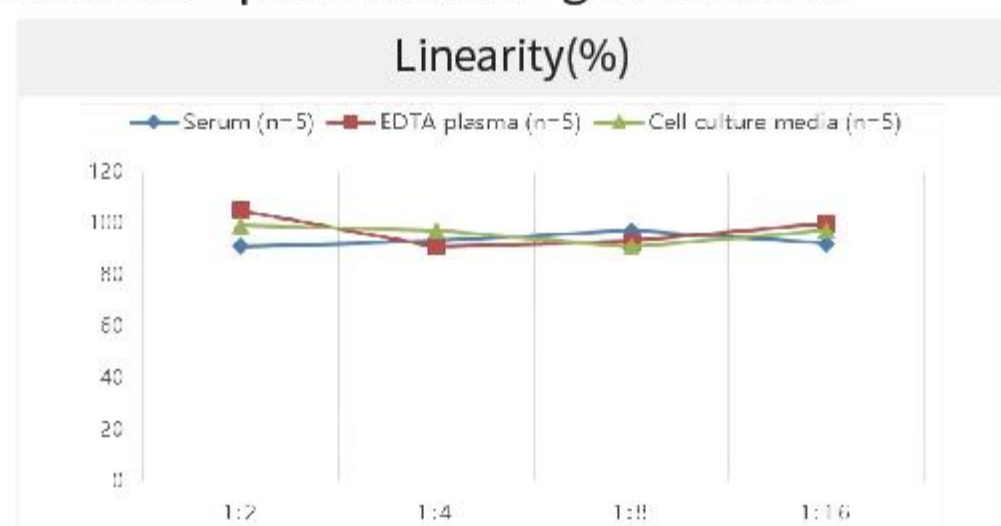


Fig. 3 Linearity Testing of Three Samples at Different Dilution Ratios

Table 2. Recovery Analysis of Human IL-6 Uncoated ELISA Kit

| Sample Type | Recovery Range (%) | Average Recovery (%) |
|--------------------------|--------------------|----------------------|
| Serum (n=8) | 88-101 | 93 |
| EDTA plasma (n=8) | 93-103 | 98 |
| Cell culture media (n=8) | 92-104 | 98 |

Focused Research Domains

Comprehensive portfolio of 700+ uncoated ELISA kits across human, mouse, and rat for cell therapy and advanced drug development.

| Cell Therapy | Antibody Drug Development | Autoimmune Drug Development | ADC Drug Development |
|---|--|---|---|
| IL-2, IL-6, IL-8, IL-10, IL-18, IFN- γ , TNF- α , GM-CSF, MCP-1, IL-1 β , EPO, VEGF | IL-2, IL-4, IL-6, IL-8, IL-10, IFN- γ , GM-CSF, TNF- α , IL-18, IL-1 β , IgE | IL-6, IFN- γ , TNF- α , IL-1 β , IL-17A, IgG, IgE | IFN- γ , TNF- α , IL-2, IL-4, IL-6, IL-18, IgG, IgE |

Elabscience Bionovation Inc.

Toll-free: 1-888-852-8623

Tel: 1-832-243-6086

Fax: 1-832-243-6017

Web: www.elabscience.com

Email: orders@elabscience.com; techsupport@elabscience.com