



# Cancer Research Antibodies

---

**Elabscience®**

Focus On Lab Research Service For Life Science

# About Elabscience

---

Elabscience specializes in immunodiagnostic technology for life science community. We have complete platform for R&D and manufacture. At the same time, we have in house QC for every Antibody, endeavoring to keep your experiment results more consistent and precise. Through unremitting effort and development, our customers have spread in more than 100 countries all over the world.

Elabscience major products cover Proteins, Antibodies, ELISA Kits, CLIA Kits, Labeling Kits and related reagents.

Elabscience also offers custom services for our customers including Protein Expression and Purification Service, Custom Antibody Service, Custom ELISA Service, Molecular Biology Service, Cell Biology Service and Whole Research Project Solutions.

# Product information

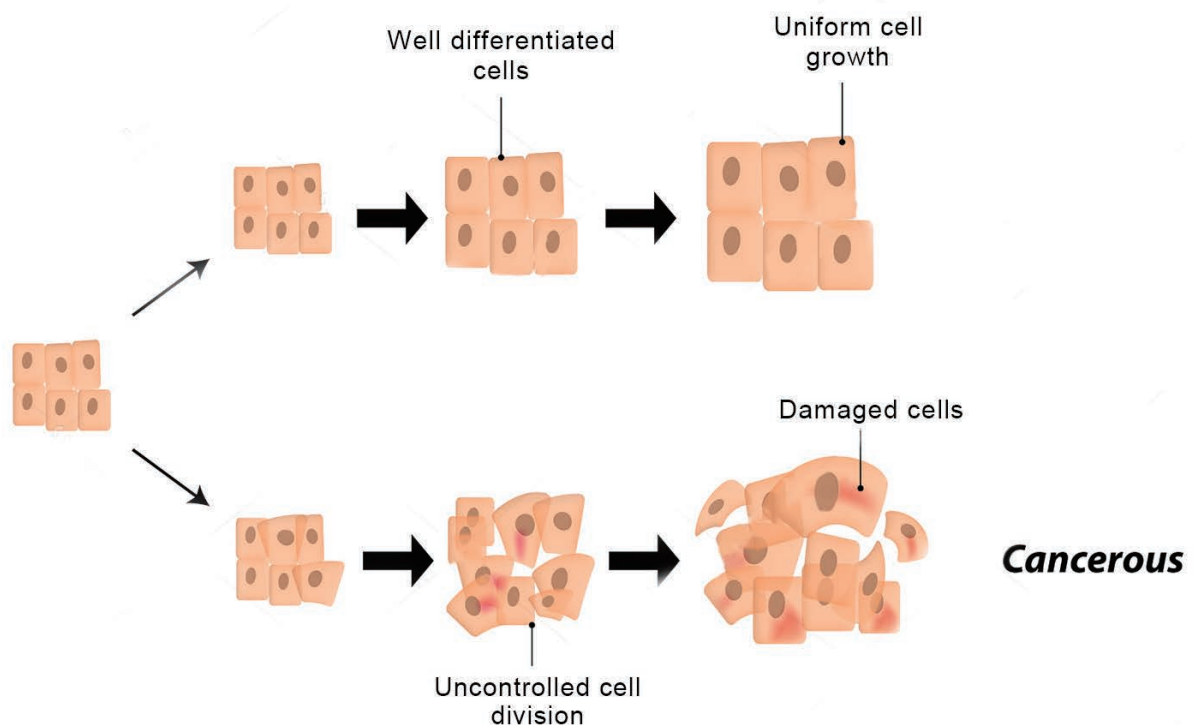
---



# Cancer

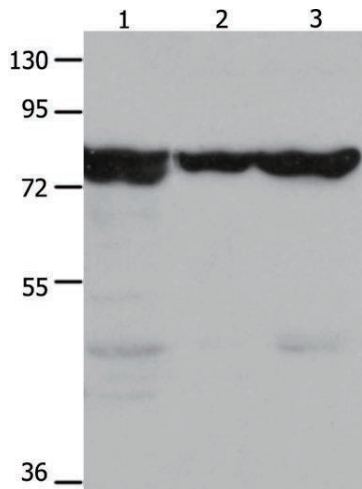
Cancer is a group of diseases involving abnormal cell growth with the potential to invade or spread to other parts of the body. Not all tumors are cancerous, benign tumors do not spread to other parts of the body. Possible signs and symptoms include a lump, abnormal bleeding, prolonged cough, unexplained weight loss and a change in bowel movements. While these symptoms may indicate cancer, they may have other causes. Over 100 cancers affect humans.

## Cancer progression

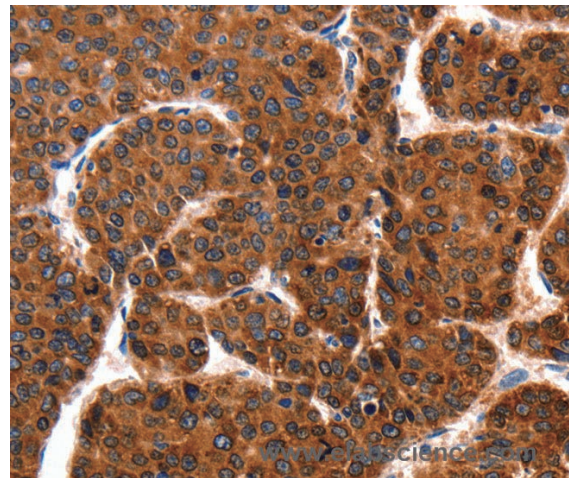


## Cancer Research

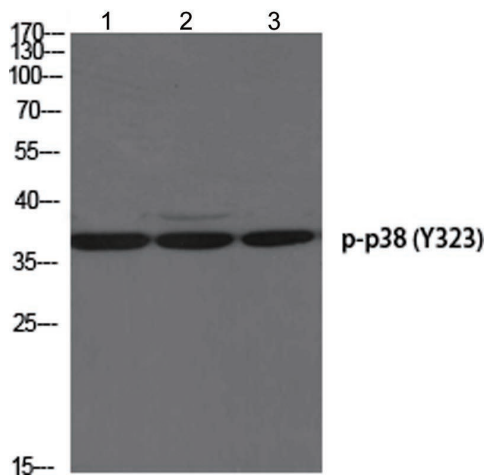
### Applications of Cancer Research Antibodies



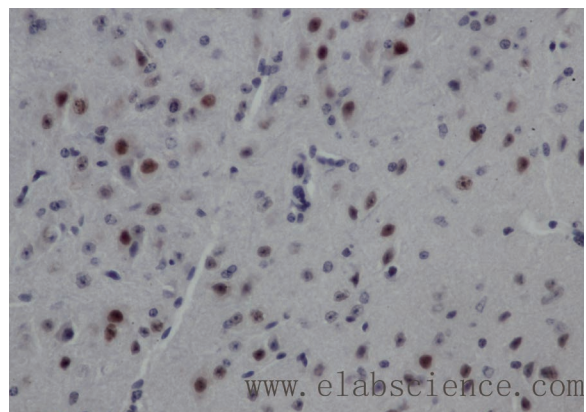
Western Blot analysis of Mouse kidney tissue, 293T and Hela cells using E-AB-10381 TRAP1 Polyclonal Antibody at dilution of 1:1500.



Immunohistochemistry of paraffin-embedded Human liver cancer using E-AB-10381 TRAP1 Polyclonal Antibody at dilution of 1:100.



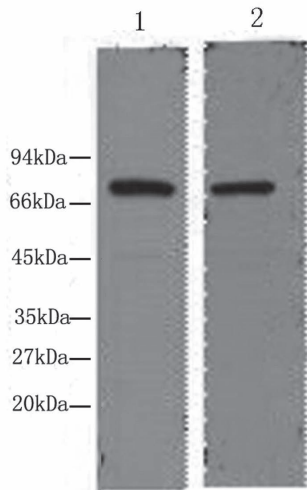
Western Blot analysis of 823, 293-UV and 22RV1 cells using E-AB-21201 Phospho-p38 (Tyr323) Polyclonal Antibody at dilution of 1:1000.



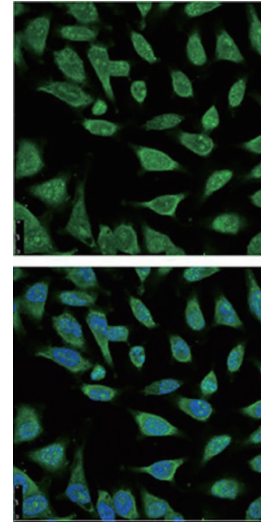
Immunohistochemistry of paraffin-embedded Mouse brain using E-AB-21201 Phospho-p38 (Tyr323) Polyclonal Antibody at dilution of 1:50.

## Cancer Research

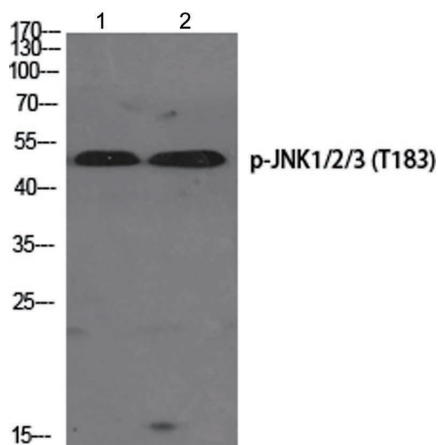
---



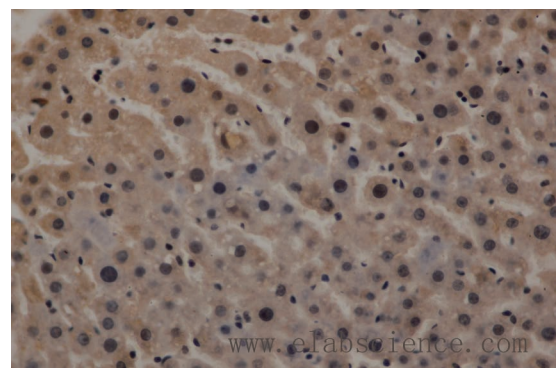
Western Blot analysis of Hela cells and Mouse brain using E-AB-22005 HSP70 Monoclonal Antibody at dilution of 1:2000.



Immunofluorescence analysis of Hela cells using E-AB-22005 HSP70 Monoclonal Antibody at dilution of 1:100.

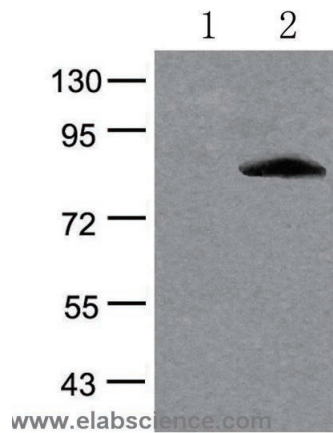


Western Blot analysis of Rat kidney and Mouse brain using E-AB-20915 Phospho-JNK1/2/3 (Thr183) Polyclonal Antibody at dilution of 1:1000.

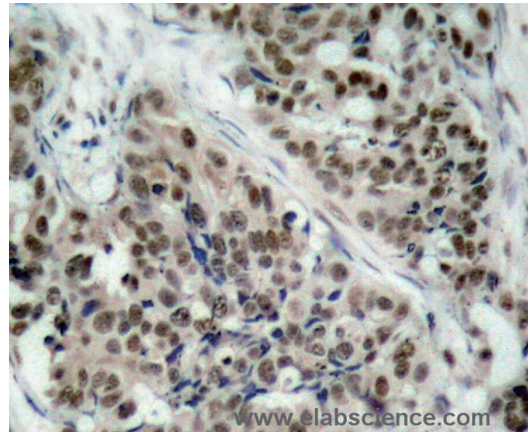


Immunohistochemistry of paraffin-embedded Mouse liver using E-AB-20915 Phospho-JNK1/2/3 (Thr183) Polyclonal Antibody at dilution of 1:50.

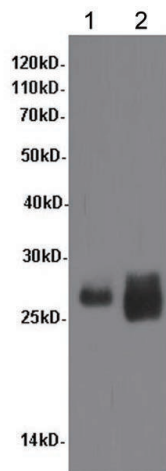
## Cancer Research



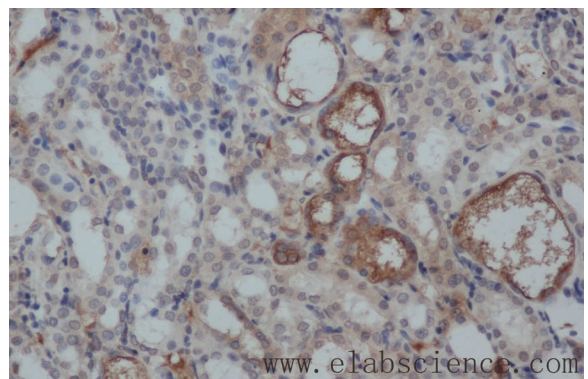
Western Blot analysis of 293 cells untreated or treated with serum using E-AB-11935 Phospho-FOXO1 (Ser256) Polyclonal Antibody at dilution of 1:500.



Immunohistochemistry of paraffin-embedded Human breast carcinoma tissue using E-AB-11935 Phospho-FOXO1 (Ser256) Polyclonal Antibody at dilution of 1:50.



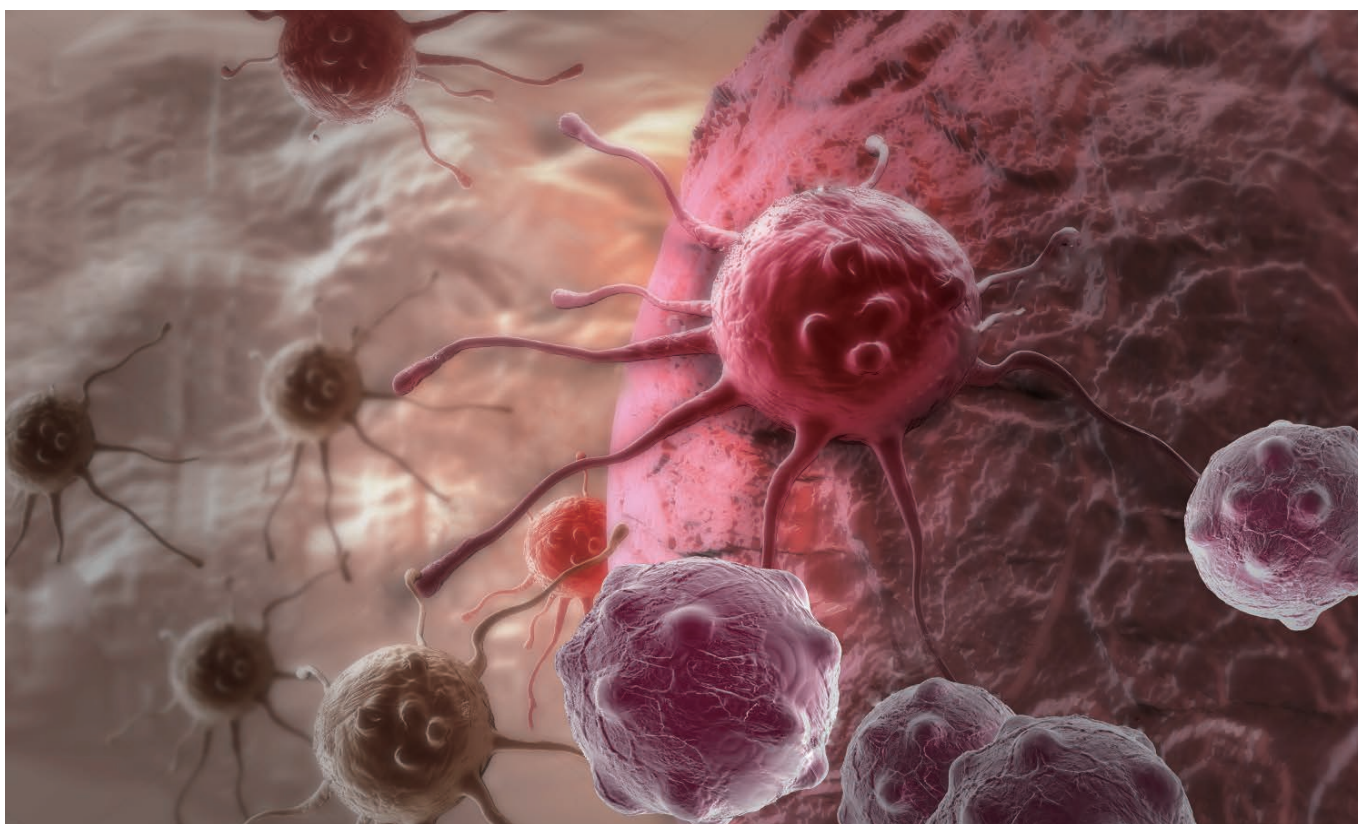
Western Blot analysis of Rat kidney and Mouse kidney tissue using E-AB-40015 TNF- $\alpha$  Polyclonal Antibody at dilution of 1:600.



Immunohistochemistry of paraffin-embedded Rat kidney using E-AB-40015 TNF- $\alpha$  Polyclonal Antibody at dilution of 1:50.

# Product details

## Cancer Research



Cat.No.	Product Name	Swissprot	Reactivity	Application	Host
E-AB-30378	A20 Polyclonal Antibody	P21580	H,M	WB IF ELISA	Rabbit
E-AB-12687	ABCG1 Polyclonal Antibody	P45844	H	WB IHC ELISA	Rabbit
E-AB-30393	ABCG2 Polyclonal Antibody	Q9UNQ0	H	WB IHC ELISA	Rabbit
E-AB-30708	Abl1 Polyclonal Antibody	P00519	H,M,R,Mk	WB IHC ELISA	Rabbit
E-AB-15895	ABL2 Polyclonal Antibody	P42684	H,M	WB IHC ELISA	Rabbit
E-AB-21139	Phospho-ACC $\alpha$ (S80) Polyclonal Antibody	Q13085	H,M,R	WB IHC ELISA	Rabbit
E-AB-30405	ACC $\alpha$ Polyclonal Antibody	Q13085	H,M,R	WB IHC ELISA	Rabbit
E-AB-10715	ACOX1 Polyclonal Antibody	Q15067	H,M,R	WB IHC ELISA	Rabbit
E-AB-14759	ACTN4 Polyclonal Antibody	O43707	H,M,R	WB IHC ELISA	Rabbit
E-AB-14498	ADAM10 Polyclonal Antibody	O14672	H,M,R	WB IHC ELISA	Rabbit



## Cancer Research

Cat.No.	Product Name	Swissprot	Reactivity	Application	Host
E-AB-30441	AF-10 Polyclonal Antibody	P55197	H,M	WB IHC IF ELISA	Rabbit
E-AB-21199	Phospho-Ah Receptor (S36) Polyclonal Antibody	P35869/A9YTQ3	H,M,R	WB IHC ELISA	Rabbit
E-AB-30447	AIF-M1 Polyclonal Antibody	O95831	H,M,R	WB IHC IF ELISA	Rabbit
E-AB-30449	AIM2 Polyclonal Antibody	O14862	H	WB IHC IF ELISA	Rabbit
E-AB-20802	Phospho-Akt (S473) Polyclonal Antibody	P31749/P31751/Q9Y243	H,M,R	WB IHC ELISA	Rabbit
E-AB-30465	Akt Polyclonal Antibody	P31749/P31751/Q9Y243	H,M,R	WB IHC ELISA	Rabbit
E-AB-30477	Aldolase B Polyclonal Antibody	P05062	H,M,R	WB IHC ELISA	Rabbit
E-AB-20806	Phospho-AMPK $\alpha$ 1 (S496) Polyclonal Antibody	Q13131	H,M,R	WB IHC ELISA	Rabbit
E-AB-30490	AMPK $\alpha$ 1 Polyclonal Antibody	Q13131	H,M,R	WB IHC IF ELISA	Rabbit
E-AB-21121	Phospho-AMPK $\alpha$ 1/2 (T183/172) Polyclonal Antibody	Q13131/P54646	H,M,R,Mk	WB IHC ELISA	Rabbit
E-AB-20807	Phospho-AMPK $\beta$ 1 (S182) Polyclonal Antibody	Q9Y478	H,M,R	WB IHC ELISA	Rabbit
E-AB-30492	AMPK $\beta$ 1 Polyclonal Antibody	Q9Y478	H,M,R,Mk	WB IHC ELISA	Rabbit
E-AB-30494	AMPK $\gamma$ 1/2/3 Polyclonal Antibody	P54619/Q9UGJ0/Q9UGI9	H,M,R	WB IF ELISA	Rabbit
E-AB-10134	ANGPT2 Polyclonal Antibody	O15123	H,M,R	WB IHC ELISA	Rabbit
E-AB-13806	ANTXR1 Polyclonal Antibody	Q9H6X2	H,M,R	WB IHC ELISA	Rabbit
E-AB-20808	Phospho-AP-1 (S63) Polyclonal Antibody	P05412	H,M,R	WB IHC ELISA	Rabbit
E-AB-30514	AP-1 Polyclonal Antibody	P05412	H,M,R	WB IHC IP ELISA	Rabbit
E-AB-12215	APAF1 Polyclonal Antibody	O14727	H,M,R	WB IHC ELISA	Rabbit
E-AB-30520	APC Polyclonal Antibody	P25054	H,M,R	WB IHC IF ELISA	Rabbit
E-AB-30530	ApoE Polyclonal Antibody	P02649	H,M,R	WB IHC ELISA	Rabbit
E-AB-30543	AR Polyclonal Antibody	P10275	H	WB IHC ELISA	Rabbit
E-AB-30563	ARP-1 Polyclonal Antibody	P24468	H,M,R	WB IHC IF ELISA	Rabbit
E-AB-30590	ATF-1 Polyclonal Antibody	P18846	H,M	WB IHC ELISA	Rabbit
E-AB-14582	ATG3 Polyclonal Antibody	Q9NT62	H,M,R	WB IHC ELISA	Rabbit
E-AB-10814	ATG5 Polyclonal Antibody	Q9H1Y0	H,M,R	WB IHC ELISA	Rabbit

## Cancer Research

Cat.No.	Product Name	Swissprot	Reactivity	Application	Host
E-AB-10991	AXIN2 Polyclonal Antibody	Q9Y2T1	H,M,R	WB IHC ELISA	Rabbit
E-AB-27042	B23 Monoclonal Antibody	P06748	H	WB IHC IF ELISA	Mouse
E-AB-30033	Cleaved-Bad (D71) Polyclonal Antibody	Q92934	M,R	WB IHC ELISA	Rabbit
E-AB-30618	Bad Polyclonal Antibody	Q92934	H,M,R	WB IHC ELISA	Rabbit
E-AB-30628	Bax Polyclonal Antibody	Q07812	H,M,R	WB IHC IF ELISA	Rabbit
E-AB-12289	BBC3 Polyclonal Antibody	Q9BXH1	H	WB IHC ELISA	Rabbit
E-AB-10997	Bcl-10 Polyclonal Antibody	O95999	H,M,R	WB IHC ELISA	Rabbit
E-AB-22004	Bcl-2 Monoclonal Antibody	P10415	H,M,R	WB IHC	Mouse
E-AB-30638	Bcl-6 Polyclonal Antibody	P41182	H,M,R	WB IHC ELISA	Rabbit
E-AB-30639	Bcl-w Polyclonal Antibody	Q92843	H,M,R	WB IHC IF ELISA	Rabbit
E-AB-30640	Bcl-x Polyclonal Antibody	Q07817	H,M,R	WB IHC IF ELISA	Rabbit
E-AB-30642	BCoR Polyclonal Antibody	Q6W2J9	H,M	WB IHC ELISA	Rabbit
E-AB-30643	Bcr Polyclonal Antibody	P11274	H,M	WB IHC ELISA	Rabbit
E-AB-12291	BECN1 Polyclonal Antibody	Q14457	H,M,R	WB IHC ELISA	Rabbit
E-AB-30654	BMP-2 Polyclonal Antibody	P12643	H,M,R	WB IHC ELISA	Rabbit
E-AB-13952	BMP-4 Polyclonal Antibody	P12644	H,M,R	WB IHC ELISA	Rabbit
E-AB-30658	BMP-7 Polyclonal Antibody	P18075	H,M,R	WB IHC ELISA	Rabbit
E-AB-14723	BNIP3 Polyclonal Antibody	Q12983	H,M	WB IHC ELISA	Rabbit
E-AB-12299	BRAF Polyclonal Antibody	P15056	H,M	WB IHC ELISA	Rabbit
E-AB-30669	BRCA1 Polyclonal Antibody	P38398	H,R	WB IHC IF ELISA	Rabbit
E-AB-21140	Phospho-C/EBP $\alpha$ (S21) Polyclonal Antibody	P49715	H,M,R	WB IHC ELISA	Rabbit
E-AB-30685	C/EBP $\alpha$ Polyclonal Antibody	P49715	H,M,R	WB IHC ELISA	Rabbit
E-AB-21280	Phospho-Calmodulin (T80/S82) Polyclonal Antibody	P62158	H,M,R	WB IHC IF ELISA	Rabbit
E-AB-30722	Calmodulin Polyclonal Antibody	P62158	H,M,R	WB IHC IF ELISA	Rabbit
E-AB-30738	CARD11 Polyclonal Antibody	Q9BXL7	H,M	WB IHC IF ELISA	Rabbit

## Cancer Research

Cat.No.	Product Name	Swissprot	Reactivity	Application	Host
E-AB-15533	Caspase-12 Polyclonal Antibody	Q6UXS9	H,M	WB IHC ELISA	Rabbit
E-AB-30752	Caspase-1 Polyclonal Antibody	P29466	H,M,R	WB IHC ELISA	Rabbit
E-AB-30004	Cleaved-Caspase-3 p17 (D175) Polyclonal Antibody	P42574	H,M,R	WB IHC ELISA	Rabbit
E-AB-30756	Caspase-3 Polyclonal Antibody	P42574	H,M,R	WB IHC IF ELISA	Rabbit
E-AB-30005	Cleaved-Caspase-6 p18 (D162) Polyclonal Antibody	P55212	M,R	WB IHC ELISA	Rabbit
E-AB-30006	Cleaved-Caspase-6 p18 (D179) Polyclonal Antibody	P55212	H,R	WB IHC ELISA	Rabbit
E-AB-30757	Caspase-6 Polyclonal Antibody	P55212	H,M,R	WB IHC IF ELISA	Rabbit
E-AB-30010	Cleaved-Caspase-9 (D353) Polyclonal Antibody	P55211	M,R	WB IHC ELISA	Rabbit
E-AB-21141	Phospho-Caspase-9 (T125) Polyclonal Antibody	P55211	H,M,R	WB IHC ELISA	Rabbit
E-AB-30011	Cleaved-Caspase-9 p35 (D315) Polyclonal Antibody	P55211	H	WB IHC IF ELISA	Rabbit
E-AB-30762	Caspase-9 Polyclonal Antibody	P55211	H	WB IHC IF ELISA	Rabbit
E-AB-20828	Phospho-Catenin- $\beta$ (S37) Polyclonal Antibody	P35222	H,M,R	WB IHC IF ELISA	Rabbit
E-AB-30765	Catenin- $\beta$ Polyclonal Antibody	P35222	H,M,R	WB IHC IF ELISA	Rabbit
E-AB-30772	Cathepsin B Polyclonal Antibody	P07858	H,M,R	WB IHC ELISA	Rabbit
E-AB-30773	Cathepsin D Polyclonal Antibody	P07339	H,M	WB IHC ELISA	Rabbit
E-AB-30782	Cbl Polyclonal Antibody	P22681	H,M,R	WB IHC IF ELISA	Rabbit
E-AB-30785	CBP Polyclonal Antibody	Q92793	H,M,R	WB IHC IF ELISA	Rabbit
E-AB-30802	CD130 Polyclonal Antibody	P40189	H,M	WB IHC IF ELISA	Rabbit
E-AB-30820	CD31 Polyclonal Antibody	P16284	H,M	WB IHC IF ELISA	Rabbit
E-AB-16317	CD38 Polyclonal Antibody	P28907	H,M,R	WB IHC ELISA	Rabbit
E-AB-13128	CD47 Polyclonal Antibody	Q08722	H	WB IHC ELISA	Rabbit
E-AB-21204	Phospho-CD71 (S24) Polyclonal Antibody	P02786	H,M	WB IHC ELISA	Rabbit
E-AB-30837	CD71 Polyclonal Antibody	P02786	H,M	WB IHC ELISA	Rabbit
E-AB-13141	CDCP1 Polyclonal Antibody	Q9H5V8	H	WB IHC ELISA	Rabbit
E-AB-30865	Cdk2 Polyclonal Antibody	P24941	H,M,R	WB IHC IF ELISA	Rabbit

## Cancer Research

Cat.No.	Product Name	Swissprot	Reactivity	Application	Host
E-AB-30868	Cdk5 Polyclonal Antibody	Q00535	H,M,R	WB IHC ELISA	Rabbit
E-AB-11066	CDKN2C Polyclonal Antibody	P42773	H,M	WB IHC ELISA	Rabbit
E-AB-22020	CDX2 Monoclonal Antibody	Q99626	H,M,R	WB IHC	Mouse
E-AB-13769	CEACAM5 Polyclonal Antibody	P06731	H	WB IHC ELISA	Rabbit
E-AB-16436	CFLAR Polyclonal Antibody	O15519	H,M	WB IHC ELISA	Rabbit
E-AB-21163	Phospho-c-Fos (S362) Polyclonal Antibody	P01100	H,M,R	WB IHC ELISA	Rabbit
E-AB-30899	c-Fos Polyclonal Antibody	P01100	H,M,R	WB IHC ELISA	Rabbit
E-AB-21106	Phospho-Chk1 (S301) Polyclonal Antibody	O14757	H,M,R	WB IF ELISA	Rabbit
E-AB-20841	Phospho-Chk1 (S317) Polyclonal Antibody	O14757	H,M,R	WB IHC ELISA	Rabbit
E-AB-21158	Phospho-Chk2 (T387) Polyclonal Antibody	O96017	H,M,R	WB IHC ELISA	Rabbit
E-AB-20843	Phospho-Chk2 (T68) Polyclonal Antibody	O96017	H,M,R	WB IHC ELISA	Rabbit
E-AB-30916	Chk2 Polyclonal Antibody	O96017	H,M,R	WB IHC ELISA	Rabbit
E-AB-30922	CHOP Polyclonal Antibody	P35638	H,M,R	WB IHC IF ELISA	Rabbit
E-AB-22018	CK8 Monoclonal Antibody	P05787	H,M,R	WB IHC	Mouse
E-AB-30933	c-Kit Polyclonal Antibody	P10721	H,M	WB IHC ELISA	Rabbit
E-AB-30942	Claudin-3 Polyclonal Antibody	O15551	H	WB IHC ELISA	Rabbit
E-AB-30953	CLIC4 Polyclonal Antibody	Q9Y696	H,M,R	WB IHC ELISA	Rabbit
E-AB-30965	Clusterin Polyclonal Antibody	P10909	H,M,R	WB IHC IF ELISA	Rabbit
E-AB-30971	c-Myb Polyclonal Antibody	P10242	H,M	WB IHC IF ELISA	Rabbit
E-AB-21265	Phospho-c-Myc (S62) Polyclonal Antibody	P01106	H,M,R	WB IHC IF ELISA	Rabbit
E-AB-20845	Phospho-c-Myc (T58) Polyclonal Antibody	P01106	H,M,R	WB IHC IP ELISA	Rabbit
E-AB-30972	c-Myc Polyclonal Antibody	P01106	H,M,R	WB IHC ELISA	Rabbit
E-AB-30984	Cofilin Polyclonal Antibody	P23528	H,M,R	WB IHC IF ELISA	Rabbit
E-AB-30991	COL4A1 Polyclonal Antibody	P02462	H,M	WB IHC ELISA	Rabbit
E-AB-30993	COL4A6 Polyclonal Antibody	Q14031	H	WB IHC IF ELISA	Rabbit

## Cancer Research

Cat.No.	Product Name	Swissprot	Reactivity	Application	Host
E-AB-21254	Phospho-Cortactin (Y466) Polyclonal Antibody	Q14247	H,M,R,Mk	WB IHC IF ELISA	Rabbit
E-AB-31012	Cox-2 Polyclonal Antibody	P35354	H	WB IHC IF ELISA	Rabbit
E-AB-31015	COX6c Polyclonal Antibody	P09669	H,M,R	WB IHC IF ELISA	Rabbit
E-AB-31022	CRABP-II Polyclonal Antibody	P29373	H,M,R	WB IHC ELISA	Rabbit
E-AB-20849	Phospho-CREB-1 (S133) Polyclonal Antibody	P16220	H,M,R	WB IHC IP ELISA	Rabbit
E-AB-31024	CREB-1 Polyclonal Antibody	P16220	H,M,R	WB IHC ELISA	Rabbit
E-AB-14017	CRMP1 Polyclonal Antibody	Q14194	H,M,R	WB IHC ELISA	Rabbit
E-AB-10781	CRYAB Polyclonal Antibody	P02511	H,M,R	WB IHC ELISA	Rabbit
E-AB-31047	c-Src Polyclonal Antibody	P12931	H,M,R	WB IHC IF ELISA	Rabbit
E-AB-31072	Cyclin D1 Polyclonal Antibody	P24385	H,M,R	WB IHC ELISA	Rabbit
E-AB-31074	Cyclin E1 Polyclonal Antibody	P24864	H,M,R	WB IHC IF ELISA	Rabbit
E-AB-31082	CYCS Polyclonal Antibody	P99999	H,M,R,Mk	WB IHC ELISA	Rabbit
E-AB-31086	CYP19A1 Polyclonal Antibody	P11511	H,M,R	WB IHC IF ELISA	Rabbit
E-AB-14912	CYP27A1 Polyclonal Antibody	Q02318	H,M	WB IHC ELISA	Rabbit
E-AB-11130	CYR61 Polyclonal Antibody	O00622	H,M,R	WB IHC ELISA	Rabbit
E-AB-21159	Phospho-Daxx (S668) Polyclonal Antibody	Q9UER7	H	WB IHC ELISA	Rabbit
E-AB-31164	Daxx Polyclonal Antibody	Q9UER7	H,M,R	WB IHC IF ELISA	Rabbit
E-AB-31185	Desmin Polyclonal Antibody	P17661	H,M,R	WB IHC IF ELISA	Rabbit
E-AB-13205	DNM2 Polyclonal Antibody	P50570	H,M,R	WB IHC ELISA	Rabbit
E-AB-21251	Phospho-DRP1 (S637) Polyclonal Antibody	O00429	H,M,R	WB IHC ELISA	Rabbit
E-AB-31239	DRP1 Polyclonal Antibody	O00429	H,M,R	WB IHC ELISA	Rabbit
E-AB-31252	E2F-1 Polyclonal Antibody	Q01094	H,M	WB IHC ELISA	Rabbit
E-AB-31261	E-cadherin Polyclonal Antibody	P12830	H	WB IHC IF ELISA	Rabbit
E-AB-31264	EDG-1 Polyclonal Antibody	P21453	H,M,R	WB IF ELISA	Rabbit
E-AB-20858	Phospho-EGFR (T693) Polyclonal Antibody	P00533	H,M,R	WB IHC IF ELISA	Rabbit

## Cancer Research

Cat.No.	Product Name	Swissprot	Reactivity	Application	Host
E-AB-21276	Phospho-EGFR (Y1016) Polyclonal Antibody	P00533	H,M,R	WB IHC IF ELISA	Rabbit
E-AB-20859	Phospho-EGFR (Y1092) Polyclonal Antibody	P00533	H,M,R	WB IHC ELISA	Rabbit
E-AB-20862	Phospho-EGFR (Y1197) Polyclonal Antibody	P00533	H,M,R	WB IHC ELISA	Rabbit
E-AB-20863	Phospho-EGFR (Y869) Polyclonal Antibody	P00533	H,M,R	WB IF ELISA	Rabbit
E-AB-31281	EGFR Polyclonal Antibody	P00533	H,M,R	WB IHC IF ELISA	Rabbit
E-AB-31306	Elk-1 Polyclonal Antibody	P19419	H,M,R	WB IHC IF ELISA	Rabbit
E-AB-10300	ELN Polyclonal Antibody	P15502	H	WB IHC ELISA	Rabbit
E-AB-31315	EMMPRIN Polyclonal Antibody	P35613	H,M,R	WB IHC ELISA	Rabbit
E-AB-11010	ENO1 Polyclonal Antibody	P06733	H,M,R	WB IHC ELISA	Rabbit
E-AB-31325	Enolase Polyclonal Antibody	P09104	H,M,R	WB IHC IF ELISA	Rabbit
E-AB-31358	ER81 Polyclonal Antibody	P50549	H,M	WB IHC ELISA	Rabbit
E-AB-10231	ERBB4 Polyclonal Antibody	Q15303	H,M,R	WB IHC ELISA	Rabbit
E-AB-14117	ERG Polyclonal Antibody	P11308	H,M	WB IHC ELISA	Rabbit
E-AB-21303	Phospho-ERK 1/2 (T202/Y204) Polyclonal Antibody	P27361/P28482	H,M,R	WB IHC ELISA	Rabbit
E-AB-31374	ERK 1/2 Polyclonal Antibody	P27361/P28482	H,M,R	WB IHC ELISA	Rabbit
E-AB-20870	Phospho-ER $\alpha$ (S104) Polyclonal Antibody	P03372	H,M,R	WB IHC ELISA	Rabbit
E-AB-20871	Phospho-ER $\alpha$ (S106) Polyclonal Antibody	P03372	H,M,R	WB IHC IF ELISA	Rabbit
E-AB-20872	Phospho-ER $\alpha$ (S118) Polyclonal Antibody	P03372	H,M	WB IHC ELISA	Rabbit
E-AB-21172	Phospho-ER $\alpha$ (Y537) Polyclonal Antibody	P03372	H,M,R	WB IHC ELISA	Rabbit
E-AB-31380	ER $\alpha$ Polyclonal Antibody	P03372	H,M,R	WB IHC IF ELISA	Rabbit
E-AB-31382	ER $\beta$ Polyclonal Antibody	Q92731	H,M,R	WB IF ELISA	Rabbit
E-AB-21277	Phospho-Ets-1 (T38) Polyclonal Antibody	P14921	H,M,R	WB IHC IF ELISA	Rabbit
E-AB-15002	ETV7 Polyclonal Antibody	Q9Y603	H,M	WB IHC ELISA	Rabbit
E-AB-15004	EZR Polyclonal Antibody	P15311	H,M,R	WB IHC ELISA	Rabbit
E-AB-31393	Ezrin Polyclonal Antibody	P15311	H,M,R	WB IHC ELISA	Rabbit

## Cancer Research

Cat.No.	Product Name	Swissprot	Reactivity	Application	Host
E-AB-10318	FADD Polyclonal Antibody	Q13158	H,M	WB IHC ELISA	Rabbit
E-AB-21207	Phospho-FAK (Y397) Polyclonal Antibody	Q05397	H,M,R	WB IHC ELISA	Rabbit
E-AB-31405	FAK Polyclonal Antibody	Q05397	H,M,R	WB IHC ELISA	Rabbit
E-AB-21288	Phospho-FANCA (S1149) Polyclonal Antibody	O15360	H	WB IHC IF ELISA	Rabbit
E-AB-31408	FANCD2 Polyclonal Antibody	Q9BXW9	H,M,R	WB IHC ELISA	Rabbit
E-AB-31409	FAS Polyclonal Antibody	P25445	H	WB IF ELISA	Rabbit
E-AB-31426	FGFR-3 Polyclonal Antibody	P22607	H,M,R	WB IHC ELISA	Rabbit
E-AB-22031	FH Monoclonal Antibody	P07954	H,M,R	WB IF	Mouse
E-AB-14086	FHIT Polyclonal Antibody	P49789	H,M,R	WB IHC ELISA	Rabbit
E-AB-11241	FIS1 Polyclonal Antibody	Q9Y3D6	H,M,R	WB IHC ELISA	Rabbit
E-AB-31436	Flg Polyclonal Antibody	P11362	H,M,R	WB IHC ELISA	Rabbit
E-AB-20874	Phospho-Flk-1 (Y1175) Polyclonal Antibody	P35968	H,M,R	WB IHC ELISA	Rabbit
E-AB-31442	Flk-1 Polyclonal Antibody	P35968	H,M	WB IHC IF ELISA	Rabbit
E-AB-31448	FN1 Polyclonal Antibody	P02751	H,M,R	WB IHC ELISA	Rabbit
E-AB-31451	FOP Polyclonal Antibody	O95684	H,M,R	WB IHC IF ELISA	Rabbit
E-AB-31466	FOXO1 Polyclonal Antibody	Q12778	H,M,R	WB IHC IF ELISA	Rabbit
E-AB-20878	Phospho-FoxO3A (S253) Polyclonal Antibody	O43524	H,M,R	WB IHC IF ELISA	Rabbit
E-AB-31469	FoxO3A Polyclonal Antibody	O43524	H,M,R	WB IHC IF ELISA	Rabbit
E-AB-31477	Frizzled-7 Polyclonal Antibody	O75084	H,M	WB IF ELISA	Rabbit
E-AB-27170	FUS/TLS Monoclonal Antibody	P35637	H,M	WB IHC IF ELISA	Mouse
E-AB-31485	Fusin Polyclonal Antibody	P61073	H,M,R	WB IF ELISA	Rabbit
E-AB-21164	Phospho-Fyn (Y530) Polyclonal Antibody	P06241	H,M,R	WB IHC ELISA	Rabbit
E-AB-31501	Galectin-8 Polyclonal Antibody	O00214	H,M	WB IHC IF ELISA	Rabbit
E-AB-31502	Galectin-9 Polyclonal Antibody	O00182	H,M,R	WB IHC IF ELISA	Rabbit
E-AB-20032	GAPDH Monoclonal Antibody	P04406	H,M,R,Mk,Rb,Dg,C, Hm,Pg,Sh,Insect, Yeast	WB IHC	Mouse

## Cancer Research

Cat.No.	Product Name	Swissprot	Reactivity	Application	Host
E-AB-20059	GAPDH Polyclonal Antibody	P04406	H,M,R,Rb,Ch,Mk,Sh,X	WB IHC	Rabbit
E-AB-10340	GAS7 Polyclonal Antibody	O60861	H,M,R	WB IHC ELISA	Rabbit
E-AB-31509	GATA-1 Polyclonal Antibody	P15976	H,M,R	WB IHC IF IP ELISA	Rabbit
E-AB-31513	GATA-4 Polyclonal Antibody	P43694	H,M,R	WB IHC ELISA	Rabbit
E-AB-11269	GLO1 Polyclonal Antibody	Q04760	H,M,R	WB IHC ELISA	Rabbit
E-AB-31548	Glucagon Receptor Polyclonal Antibody	P47871	H,M,R	WB IF ELISA	Rabbit
E-AB-31556	Glut1 Polyclonal Antibody	P11166	H,M,R	WB IHC ELISA	Rabbit
E-AB-31558	Glut4 Polyclonal Antibody	P14672	H,M,R	WB IHC ELISA	Rabbit
E-AB-21165	Phospho-Glycogen Synthase 1 (S645) Polyclonal Antibody	P13807	H,M,R	WB IHC ELISA	Rabbit
E-AB-14088	GNAS Polyclonal Antibody	P63092	H,M,R	WB IHC ELISA	Rabbit
E-AB-21144	Phospho-GR (S211) Polyclonal Antibody	P04150	H,M,R	WB IHC ELISA	Rabbit
E-AB-21166	Phospho-GR (S226) Polyclonal Antibody	P04150	H,M,R	WB IHC ELISA	Rabbit
E-AB-21003	Phospho-GSK3 $\beta$ (S9) Polyclonal Antibody	P49841	H,M,R	WB IHC ELISA	Rabbit
E-AB-31629	GSK3 $\beta$ Polyclonal Antibody	P49841	H,M,R	WB IHC IP ELISA	Rabbit
E-AB-11275	GYS1 Polyclonal Antibody	P13807	H,M,R	WB IHC ELISA	Rabbit
E-AB-31645	HDAC3 Polyclonal Antibody	O15379	H,M,R	WB IHC IF ELISA	Rabbit
E-AB-31652	Hec1 Polyclonal Antibody	O14777	H,M	WB IF ELISA	Rabbit
E-AB-22008	HER2 Monoclonal Antibody	P04626	H,M,R	WB IHC	Mouse
E-AB-31662	HIF-1 $\alpha$ Polyclonal Antibody	Q16665	H,M,R	WB IHC ELISA	Rabbit
E-AB-31663	HIF-1 $\beta$ Polyclonal Antibody	P27540	H,M,R	WB IHC ELISA	Rabbit
E-AB-31685	Histone H3 Polyclonal Antibody	P68431/Q71DI3/ P84243	H,M,R	WB IHC IF ELISA	Rabbit
E-AB-14706	HK2 Polyclonal Antibody	P52789	H,M,R	WB IHC ELISA	Rabbit
E-AB-16483	HMGCS2 Polyclonal Antibody	P54868	H,M	WB IHC ELISA	Rabbit
E-AB-31701	HNF-4 $\alpha$ Polyclonal Antibody	P41235	H,M,R	WB IHC ELISA	Rabbit
E-AB-16497	HSD17B1 Polyclonal Antibody	P14061	H	WB IHC ELISA	Rabbit



## Cancer Research

Cat.No.	Product Name	Swissprot	Reactivity	Application	Host
E-AB-20895	Phospho-HSP27 (S15) Polyclonal Antibody	P04792	H,Mk	WB IHC ELISA	Rabbit
E-AB-20896	Phospho-HSP27 (S78) Polyclonal Antibody	P04792	H	WB IHC ELISA	Rabbit
E-AB-20897	Phospho-HSP27 (S82) Polyclonal Antibody	P04792	H,M,R	WB IHC ELISA	Rabbit
E-AB-31748	HSP27 Polyclonal Antibody	P04792	H,M,R	WB IHC ELISA	Rabbit
E-AB-22005	HSP70 Monoclonal Antibody	P34931/P08107	H,M,R	WB IF	Mouse
E-AB-31752	HSP90A Polyclonal Antibody	P07900	H,M,R	WB IHC IF ELISA	Rabbit
E-AB-14114	HSP90B1 Polyclonal Antibody	P14625	H,M,R	WB IHC ELISA	Rabbit
E-AB-14691	IDH1 Polyclonal Antibody	O75874	H,M,R	WB IHC ELISA	Rabbit
E-AB-11319	IDH2 Polyclonal Antibody	P48735	H,M,R	WB IHC ELISA	Rabbit
E-AB-15726	IGFBP7 Polyclonal Antibody	Q16270	H,M	WB IHC ELISA	Rabbit
E-AB-20899	Phospho-IGF-IR (Y1161) Polyclonal Antibody	P08069/P06213	H,M,R	WB IHC IP ELISA	Rabbit
E-AB-31770	IGF-IR Polyclonal Antibody	P08069	H,M,R	WB IHC ELISA	Rabbit
E-AB-31765	IGF-IR Polyclonal Antibody	P08069/P06213	H,M,R	WB IHC ELISA	Rabbit
E-AB-20901	Phospho-IKK $\alpha$ (T23) Polyclonal Antibody	O15111	H,M,R	WB IHC ELISA	Rabbit
E-AB-31777	IKK $\alpha$ Polyclonal Antibody	O15111	H,M,R	WB IHC ELISA	Rabbit
E-AB-20902	Phospho-IKK $\alpha$ / $\beta$ (S176/177) Polyclonal Antibody	O15111/O14920	H,M,R	WB IHC ELISA	Rabbit
E-AB-20903	Phospho-IKK $\alpha$ / $\beta$ (S180/181) Polyclonal Antibody	O15111/O14920	H,M,R	WB IHC ELISA	Rabbit
E-AB-31778	IKK $\alpha$ / $\beta$ Polyclonal Antibody	O15111/O14920	H,M,R	WB IHC ELISA	Rabbit
E-AB-31780	IKK $\beta$ Polyclonal Antibody	O14920	H,M,R	WB IHC ELISA	Rabbit
E-AB-31782	IKK $\gamma$ Polyclonal Antibody	Q9Y6K9	H	WB IHC ELISA	Rabbit
E-AB-40016	IL10 Polyclonal Antibody	P22301	H,M,R	WB IHC	Rabbit
E-AB-10393	IL18 Polyclonal Antibody	Q14116	H	WB IHC ELISA	Rabbit
E-AB-21175	Phospho-Insulin R (Y1355) Polyclonal Antibody	P06213	H	WB IHC ELISA	Rabbit
E-AB-21176	Phospho-Insulin R (Y1361) Polyclonal Antibody	P06213	H,M,R	WB IHC ELISA	Rabbit
E-AB-31830	IRF-4 Polyclonal Antibody	Q15306	H,M	WB IHC IF ELISA	Rabbit

## Cancer Research

Cat.No.	Product Name	Swissprot	Reactivity	Application	Host
E-AB-31833	IRS-1 Polyclonal Antibody	P35568	H,M,R	WB IHC IF ELISA	Rabbit
E-AB-20911	Phospho-IkB- $\alpha$ (S32/S36) Polyclonal Antibody	P25963	H,M,R,Mk	WB IHC IF ELISA	Rabbit
E-AB-31840	IkB- $\alpha$ Polyclonal Antibody	P25963	H,M,R	WB IHC IF ELISA	Rabbit
E-AB-20913	Phospho-JAK1 (Y1022) Polyclonal Antibody	P23458	H,M,R	WB IHC ELISA	Rabbit
E-AB-31843	JAK1 Polyclonal Antibody	P23458	H,M,R	WB IHC ELISA	Rabbit
E-AB-21017	Phospho-JAK2 (Y570) Polyclonal Antibody	O60674	H,M,R	WB IHC ELISA	Rabbit
E-AB-31844	JAK2 Polyclonal Antibody	O60674	H,M,R	WB IHC ELISA	Rabbit
E-AB-31846	JAK3 Polyclonal Antibody	P52333	H,M,R	WB IHC IF ELISA	Rabbit
E-AB-20915	Phospho-JNK1/2/3 (T183) Polyclonal Antibody	P45983/P45984/ P53779	H,M,R	WB IHC IF ELISA	Rabbit
E-AB-21253	Phospho-JNK1/2/3 (Y185) Polyclonal Antibody	P45983/P45984/ P53779	H,M,R	WB IHC ELISA	Rabbit
E-AB-31853	JNK1/2/3 Polyclonal Antibody	P45983/P45984/ P53779	H,M,R	WB IHC IF ELISA	Rabbit
E-AB-31869	Ki-67 Polyclonal Antibody	P46013	H	IHC IF ELISA	Rabbit
E-AB-27227	KRAS Monoclonal Antibody	P01116	H	WB IHC ELISA	Mouse
E-AB-31883	Ku-70 Polyclonal Antibody	P12956	H,M,R	WB IHC IF ELISA	Rabbit
E-AB-31901	Lamin B1 Polyclonal Antibody	P20700	H,M,R	WB IHC ELISA	Rabbit
E-AB-10277	LAMP2 Polyclonal Antibody	P13473	H	WB IHC ELISA	Rabbit
E-AB-31914	Lck Polyclonal Antibody	P06239	H,M,R	WB IF ELISA	Rabbit
E-AB-20918	Phospho-LIMK-1 (T508) Polyclonal Antibody	P53667	H,M,R	WB IHC IF ELISA	Rabbit
E-AB-31924	LIMK-1 Polyclonal Antibody	P53667	H,M,R	WB IHC IF ELISA	Rabbit
E-AB-15490	LOX Polyclonal Antibody	P28300	H,M,R	WB IHC ELISA	Rabbit
E-AB-16348	MAF Polyclonal Antibody	O75444	H,M,R	WB IHC ELISA	Rabbit
E-AB-12553	MAP2K2 Polyclonal Antibody	P36507	H,M,R	WB IHC ELISA	Rabbit
E-AB-10446	MAP2K6 Polyclonal Antibody	P52564	H,M	WB IHC ELISA	Rabbit
E-AB-31988	Mcl-1 Polyclonal Antibody	Q07820	H,M,R	WB IHC ELISA	Rabbit
E-AB-31995	MDM2 Polyclonal Antibody	Q00987	H,M,Mk	WB IHC IF ELISA	Rabbit

## Cancer Research

Cat.No.	Product Name	Swissprot	Reactivity	Application	Host
E-AB-31996	MDMX Polyclonal Antibody	O15151	H,M,R	WB IHC ELISA	Rabbit
E-AB-32005	MEK-1 Polyclonal Antibody	Q02750	H,M,R	WB IHC ELISA	Rabbit
E-AB-32008	MEK-1/2 Polyclonal Antibody	Q02750/P36507	H,M,R	WB IHC ELISA	Rabbit
E-AB-20923	Phospho-MEK-2 (T394) Polyclonal Antibody	P36507	H,M,R	WB IHC IP ELISA	Rabbit
E-AB-20924	Phospho-MEK-3 (S218) Polyclonal Antibody	P46734	H,M,R	WB IHC ELISA	Rabbit
E-AB-20925	Phospho-MEK-4 (S80) Polyclonal Antibody	P45985	H,M,R	WB IHC ELISA	Rabbit
E-AB-32012	MEK-6 Polyclonal Antibody	P52564	H,M,R	WB IHC IF ELISA	Rabbit
E-AB-32018	Menin Polyclonal Antibody	O00255	H,M,R	WB IHC ELISA	Rabbit
E-AB-32023	Met Polyclonal Antibody	P08581	H,M,R	WB IF ELISA	Rabbit
E-AB-32025	Mfn2 Polyclonal Antibody	O95140	H,M,R	WB IHC ELISA	Rabbit
E-AB-10460	MITF Polyclonal Antibody	O75030	H,M	WB IHC ELISA	Rabbit
E-AB-32045	MLH1 Polyclonal Antibody	P40692	H,M,R	WB IF ELISA	Rabbit
E-AB-13831	MMP-1 Polyclonal Antibody	P03956	H,M	WB IHC ELISA	Rabbit
E-AB-15780	MMP-10 Polyclonal Antibody	P09238	H,M	WB IHC ELISA	Rabbit
E-AB-32051	MMP-11 Polyclonal Antibody	P24347	H,M,R	WB IHC IF ELISA	Rabbit
E-AB-10064	MMP-13 Polyclonal Antibody	P45452	H,M,R	WB IHC ELISA	Rabbit
E-AB-32127	MMP-16 Polyclonal Antibody	P51512	H,M,R	WB IHC ELISA	Rabbit
E-AB-32053	MMP-19 Polyclonal Antibody	Q99542	H,M	WB IHC ELISA	Rabbit
E-AB-32054	MMP-2 Polyclonal Antibody	P08253	H,M,R,Mk	WB IHC IF ELISA	Rabbit
E-AB-16613	MMP-20 Polyclonal Antibody	O60882	H,M	WB IHC ELISA	Rabbit
E-AB-14221	MMP-28 Polyclonal Antibody	Q9H239	H,M	WB IHC ELISA	Rabbit
E-AB-32996	MMP-3 Polyclonal Antibody	P08254	H,M,R	WB IHC IF ELISA	Rabbit
E-AB-31978	MMP-7 Polyclonal Antibody	P09237	H,M,R,Mk	WB IHC ELISA	Rabbit
E-AB-32055	MMP-8 Polyclonal Antibody	P22894	H,M,R	WB IHC ELISA	Rabbit
E-AB-31531	MMP-9 Polyclonal Antibody	P14780	H	WB IHC IF ELISA	Rabbit

## Cancer Research

Cat.No.	Product Name	Swissprot	Reactivity	Application	Host
E-AB-32065	Moesin/Ezrin/Radixin Polyclonal Antibody	P26038/P35241/ P15311	H,M,R	WB IHC ELISA	Rabbit
E-AB-10470	MSH3 Polyclonal Antibody	P20585	H,M	WB IHC ELISA	Rabbit
E-AB-12214	MT-CO2 Polyclonal Antibody	P00403	H,M,R	WB IHC ELISA	Rabbit
E-AB-20929	Phospho-mTOR (S2448) Polyclonal Antibody	P42345	H,M,R	WB IHC IF ELISA	Rabbit
E-AB-32128	mTOR Polyclonal Antibody	P42345	H,M,R	WB IHC ELISA	Rabbit
E-AB-16746	MUC1 Polyclonal Antibody	P15941	H	WB IHC ELISA	Rabbit
E-AB-10477	MUTYH Polyclonal Antibody	Q9UIF7	H	WB IHC ELISA	Rabbit
E-AB-32136	MyD88 Polyclonal Antibody	Q99836	H,M,R	WB IHC ELISA	Rabbit
E-AB-32152	N/H/K-Ras Polyclonal Antibody	P01111/P01112/ P01116	H,M,R	WB IHC ELISA	Rabbit
E-AB-32170	N-cadherin Polyclonal Antibody	P19022	H,M,R	WB IHC IF ELISA	Rabbit
E-AB-11447	NCF2 Polyclonal Antibody	P19878	H,M	WB IHC ELISA	Rabbit
E-AB-12795	NDRG2 Polyclonal Antibody	Q9UN36	H,M,R	WB IHC ELISA	Rabbit
E-AB-11283	NDUFA13 Polyclonal Antibody	Q9P0J0	H,M	WB IHC ELISA	Rabbit
E-AB-11427	NDUFA9 Polyclonal Antibody	Q16795	H,M	WB IHC ELISA	Rabbit
E-AB-11432	NDUFS1 Polyclonal Antibody	P28331	H,M,R	WB IHC ELISA	Rabbit
E-AB-15242	NDUFS3 Polyclonal Antibody	O75489	H,M	WB IHC ELISA	Rabbit
E-AB-15245	NDUFS4 Polyclonal Antibody	O43181	H,M,R	WB IHC ELISA	Rabbit
E-AB-20930	Phospho-Neu (Y1221/Y1222) Polyclonal Antibody	P04626	H,M,R	WB IHC IP ELISA	Rabbit
E-AB-21269	Phospho-Neu (Y1221/Y1222) Polyclonal Antibody	P04626	H,M,R,Mk	WB IHC IF ELISA	Rabbit
E-AB-20931	Phospho-Neu (Y1248) Polyclonal Antibody	P04626	H,M,R	WB IHC ELISA	Rabbit
E-AB-20932	Phospho-Neu (Y877) Polyclonal Antibody	P04626	H,M,R	WB IHC IP ELISA	Rabbit
E-AB-32197	Neu Polyclonal Antibody	P04626	H,M,R	WB IHC ELISA	Rabbit
E-AB-32207	Neurofibromin Polyclonal Antibody	P21359	H,M,R	WB IF ELISA	Rabbit
E-AB-32215	NF2 Polyclonal Antibody	P35240	H,M,R	WB IHC IF ELISA	Rabbit
E-AB-22016	NFkB-p65 Monoclonal Antibody	Q04206	H,M,R	WB IHC IP	Mouse

## Cancer Research

Cat.No.	Product Name	Swissprot	Reactivity	Application	Host
E-AB-20933	Phospho-NFκB-p105 (S893) Polyclonal Antibody	P19838	H	WB IHC ELISA	Rabbit
E-AB-20934	Phospho-NFκB-p105 (S907) Polyclonal Antibody	P19838	H	WB IHC IP ELISA	Rabbit
E-AB-21266	Phospho-NFκB-p105 (S927) Polyclonal Antibody	P19838	H,M	WB IHC IF ELISA	Rabbit
E-AB-20935	Phospho-NFκB-p105 (S932) Polyclonal Antibody	P19838	H,M,R	WB IHC ELISA	Rabbit
E-AB-20936	Phospho-NFκB-p105/p50 (S337) Polyclonal Antibody	P19838	H,M,R	WB IHC IF ELISA	Rabbit
E-AB-32226	NFκB-p105/p50 Polyclonal Antibody	P19838	H,M	WB IHC IF ELISA	Rabbit
E-AB-20937	Phospho-NFκB-p65 (S276) Polyclonal Antibody	Q04206	H,M,R	WB IHC IP ELISA	Rabbit
E-AB-20940	Phospho-NFκB-p65 (S529) Polyclonal Antibody	Q04206	H,M	WB IHC ELISA	Rabbit
E-AB-20941	Phospho-NFκB-p65 (S536) Polyclonal Antibody	Q04206	H,M,R,Mk	WB IHC IP ELISA	Rabbit
E-AB-32245	Nibrin Polyclonal Antibody	O60934	H,M,R	WB IHC ELISA	Rabbit
E-AB-32263	NOS1 Polyclonal Antibody	P29475	H,M,R	WB IHC IF ELISA	Rabbit
E-AB-30054	Cleaved-Notch 1 (V1754) Polyclonal Antibody	P46531	H,M,R	WB IHC ELISA	Rabbit
E-AB-30056	Cleaved-Notch 2 (D1733) Polyclonal Antibody	Q04721	H,M,R	WB IHC ELISA	Rabbit
E-AB-12815	NOTCH1 Polyclonal Antibody	P46531	H,R	WB IHC ELISA	Rabbit
E-AB-16660	NRAS Polyclonal Antibody	P01111	H,M,R	WB IHC ELISA	Rabbit
E-AB-32280	Nrf2 Polyclonal Antibody	Q16236	H,M,R	WB IHC IF ELISA	Rabbit
E-AB-22029	NSE Monoclonal Antibody	P09104	H,M,R	WB IHC	Mouse
E-AB-32290	Nucleophosmin Polyclonal Antibody	P06748	H,M,R,Mk	WB IHC ELISA	Rabbit
E-AB-11455	NUP50 Polyclonal Antibody	Q9UKX7	H	WB IHC ELISA	Rabbit
E-AB-32294	Nur77 Polyclonal Antibody	P22736	H,M,R,Mk	WB IHC ELISA	Rabbit
E-AB-32301	Ob-R Polyclonal Antibody	P48357	H,M,Mk	WB IHC ELISA	Rabbit
E-AB-32308	Oct-3/4 Polyclonal Antibody	Q01860	H,M,R	WB IHC ELISA	Rabbit
E-AB-32430	OPN Polyclonal Antibody	P10451	H,M,R	WB IHC ELISA	Rabbit
E-AB-15273	OS9 Polyclonal Antibody	Q13438	H,M	WB IHC ELISA	Rabbit
E-AB-32445	p15 Polyclonal Antibody	P42772	H,M,R	WB IHC IF ELISA	Rabbit

## Cancer Research

Cat.No.	Product Name	Swissprot	Reactivity	Application	Host
E-AB-32447	p18 Polyclonal Antibody	P42773	H,M,Mk	WB IHC ELISA	Rabbit
E-AB-21180	Phospho-p23 (S113) Polyclonal Antibody	Q15185	H,M,R	WB IHC ELISA	Rabbit
E-AB-32449	p23 Polyclonal Antibody	Q15185	H,M,R	WB IHC ELISA	Rabbit
E-AB-32457	p300 Polyclonal Antibody	Q09472	H	WB IHC ELISA	Rabbit
E-AB-21201	Phospho-p38 (Y323) Polyclonal Antibody	Q16539	H,M,R	WB IHC ELISA	Rabbit
E-AB-32461	p38 Polyclonal Antibody	Q16539	H,M,R	WB IHC IF ELISA	Rabbit
E-AB-20951	Phospho-p53 (S15) Polyclonal Antibody	P04637	H,R	WB IHC IF IP ELISA	Rabbit
E-AB-20952	Phospho-p53 (S20) Polyclonal Antibody	P04637	H,M,R,Mk	WB IHC ELISA	Rabbit
E-AB-22015	p53 Monoclonal Antibody	P04637	H	WB IHC IF	Mouse
E-AB-32468	p53 Polyclonal Antibody	P04637	H,M,R,Mk	WB IHC IF ELISA	Rabbit
E-AB-20961	Phospho-p73 (Y99) Polyclonal Antibody	O15350	H,M	WB IHC ELISA	Rabbit
E-AB-32494	PAI-1 Polyclonal Antibody	P05121	H,M,R	WB IHC ELISA	Rabbit
E-AB-12831	PAK1 Polyclonal Antibody	Q13153	H,M,R	WB IHC ELISA	Rabbit
E-AB-14278	PAK2 Polyclonal Antibody	Q13177	H,M,R	WB IHC ELISA	Rabbit
E-AB-32502	PAR4 Polyclonal Antibody	Q96IZ0	H,M,R	WB IHC ELISA	Rabbit
E-AB-10526	PARK7 Polyclonal Antibody	Q99497	H,M,R	WB IHC ELISA	Rabbit
E-AB-12615	PAX5 Polyclonal Antibody	Q02548	H,M	WB IHC ELISA	Rabbit
E-AB-32511	PAX8 Polyclonal Antibody	Q06710	H,M,R	WB IHC ELISA	Rabbit
E-AB-20964	Phospho-Paxillin (Y88) Polyclonal Antibody	P49023	H	WB IHC ELISA	Rabbit
E-AB-32513	Paxillin Polyclonal Antibody	P49023	H,M,R	WB IHC ELISA	Rabbit
E-AB-15206	PCK2 Polyclonal Antibody	Q16822	H,M	WB IHC ELISA	Rabbit
E-AB-22001	PCNA Monoclonal Antibody	P12004	H,M,R	WB IHC	Mouse
E-AB-32524	Pdcd-4 Polyclonal Antibody	Q53EL6	H,M,R	WB IHC IF ELISA	Rabbit
E-AB-21070	Phospho-PDGFR- $\alpha$ (Y849) Polyclonal Antibody	P16234	H,M,R	WB IHC ELISA	Rabbit
E-AB-32531	PDGFR- $\beta$ Polyclonal Antibody	P09619	H,M,R	WB IHC IF ELISA	Rabbit

## Cancer Research

Cat.No.	Product Name	Swissprot	Reactivity	Application	Host
E-AB-32532	PDHA1 Polyclonal Antibody	P08559	H,M,R	WB IHC ELISA	Rabbit
E-AB-15824	PDX1 Polyclonal Antibody	P52945	H,M,R	WB IHC ELISA	Rabbit
E-AB-14305	PEBP1 Polyclonal Antibody	P30086	H,M,R	WB IHC ELISA	Rabbit
E-AB-10927	PFKP Polyclonal Antibody	Q01813	H,M,R	WB IHC ELISA	Rabbit
E-AB-10949	PGK1 Polyclonal Antibody	P00558	H,M,R	WB IHC ELISA	Rabbit
E-AB-32574	PI 3-kinase p110 $\alpha$ Polyclonal Antibody	P42336	H,M	WB IHC ELISA	Rabbit
E-AB-21218	Phospho-PI 3-kinase p85 $\alpha$ (Y607) Polyclonal Antibody	P27986	H,M,R	WB IHC ELISA	Rabbit
E-AB-32575	PI 3-kinase p85 $\alpha$ Polyclonal Antibody	P27986	H,M,R	WB IHC ELISA	Rabbit
E-AB-32577	PI 3-kinase p85 $\alpha$ / $\gamma$ Polyclonal Antibody	P27986/Q92569	H,M,R,Mk	WB IHC IF ELISA	Rabbit
E-AB-32597	PKA $\alpha$ reg Polyclonal Antibody	P10644	H,M,R	WB IHC IF ELISA	Rabbit
E-AB-21194	Phospho-PKC $\alpha$ (T638) Polyclonal Antibody	P17252	H,M,R	WB IHC ELISA	Rabbit
E-AB-30081	Cleaved-Plasma Kallikrein HC (R390) Polyclonal Antibody	P03952	H	WB IHC ELISA	Rabbit
E-AB-16258	PLIN2 Polyclonal Antibody	Q99541	H,M	WB IHC ELISA	Rabbit
E-AB-32627	PML Polyclonal Antibody	P29590	H	WB IHC IF ELISA	Rabbit
E-AB-32629	PMS1 Polyclonal Antibody	P54277	H	WB IHC ELISA	Rabbit
E-AB-13526	PMS2 Polyclonal Antibody	P54278	H	WB IHC ELISA	Rabbit
E-AB-12576	POMC Polyclonal Antibody	P01189	H,M	WB IHC ELISA	Rabbit
E-AB-15817	PPAP2A Polyclonal Antibody	O14494	H,M,R	WB IHC ELISA	Rabbit
E-AB-32647	PPAR- $\gamma$ Polyclonal Antibody	P37231	H,M,R	WB IHC ELISA	Rabbit
E-AB-10548	PPP1CB Polyclonal Antibody	P62140	H,M,R	WB IHC ELISA	Rabbit
E-AB-12845	PPP2CB Polyclonal Antibody	P62714	H,M,R	WB IHC ELISA	Rabbit
E-AB-10558	PRDX6 Polyclonal Antibody	P30041	H,M,R	WB IHC ELISA	Rabbit
E-AB-32658	Presenilin 1 Polyclonal Antibody	P49768	H,M,R	WB IHC ELISA	Rabbit
E-AB-16157	PRKAA1 Polyclonal Antibody	Q13131	H,M,R	WB IHC ELISA	Rabbit
E-AB-16192	PRKCA Polyclonal Antibody	P17252	H,M,R	WB IHC ELISA	Rabbit

## Cancer Research

Cat.No.	Product Name	Swissprot	Reactivity	Application	Host
E-AB-10894	PRKCD Polyclonal Antibody	Q05655	H,M,R	WB IHC ELISA	Rabbit
E-AB-10571	PTCH1 Polyclonal Antibody	Q13635	H,M	WB IHC ELISA	Rabbit
E-AB-32679	PTEN Polyclonal Antibody	P60484	H,M,R,Mk	WB IHC ELISA	Rabbit
E-AB-14341	PTPN11 Polyclonal Antibody	Q06124	H,M,R	WB IHC ELISA	Rabbit
E-AB-32693	PYK2 Polyclonal Antibody	Q14289	H,M,R	WB IHC ELISA	Rabbit
E-AB-20975	Phospho-Raf-1 (S259) Polyclonal Antibody	P04049	H,M,R,Mk	WB IHC ELISA	Rabbit
E-AB-21189	Phospho-Raf-1 (S296) Polyclonal Antibody	P04049	H,M,R	WB IHC ELISA	Rabbit
E-AB-32731	Raf-1 Polyclonal Antibody	P04049	H,M,R	WB IHC ELISA	Rabbit
E-AB-21224	Phospho-Raf-B (S446) Polyclonal Antibody	P15056	H,M	WB IHC ELISA	Rabbit
E-AB-21200	Phospho-Raf-B (S602) Polyclonal Antibody	P15056	H,M,R	WB IHC ELISA	Rabbit
E-AB-32733	Raf-B Polyclonal Antibody	P15056	H,M,R	WB IHC ELISA	Rabbit
E-AB-32749	RAR $\beta$ Polyclonal Antibody	P10826	H,M	WB IHC ELISA	Rabbit
E-AB-20976	Phospho-Rb (S780) Polyclonal Antibody	P06400	H,M,R	WB IHC IF ELISA	Rabbit
E-AB-32752	Rb Polyclonal Antibody	P06400	H,M,R	WB IHC ELISA	Rabbit
E-AB-14893	REL Polyclonal Antibody	Q04864	H	WB IHC ELISA	Rabbit
E-AB-32771	Ret Polyclonal Antibody	P07949	H,M,R	WB IHC IF ELISA	Rabbit
E-AB-16645	RHEB Polyclonal Antibody	Q15382	H,M,R	WB IHC ELISA	Rabbit
E-AB-32824	Rock-1 Polyclonal Antibody	Q13464	H,M,R,Mk	WB IHC ELISA	Rabbit
E-AB-10882	RPN1 Polyclonal Antibody	P04843	H,M,R	WB IHC ELISA	Rabbit
E-AB-32837	RUNX2 Polyclonal Antibody	Q13950	H,M	WB IHC ELISA	Rabbit
E-AB-32839	RXR $\gamma$ Polyclonal Antibody	P48443	H,M	WB IHC IF ELISA	Rabbit
E-AB-13595	SCD Polyclonal Antibody	O00767	H	WB IHC ELISA	Rabbit
E-AB-13603	SDHB Polyclonal Antibody	P21912	H,M,R	WB IHC ELISA	Rabbit
E-AB-32862	SEK1 Polyclonal Antibody	P45985	H,M,R	WB IHC IF ELISA	Rabbit
E-AB-15449	SERPINA1 Polyclonal Antibody	P01009	H	WB IHC ELISA	Rabbit



## Cancer Research

Cat.No.	Product Name	Swissprot	Reactivity	Application	Host
E-AB-13030	SERPINA9 Polyclonal Antibody	Q86WD7	H	WB IHC ELISA	Rabbit
E-AB-14664	SIGMAR1 Polyclonal Antibody	Q99720	H,M,R	WB IHC ELISA	Rabbit
E-AB-32913	Smad1 Polyclonal Antibody	Q15797	H,M	WB IHC IF ELISA	Rabbit
E-AB-32914	Smad1/5/9 Polyclonal Antibody	Q15797/Q99717/ O15198	H,M,R	WB IHC ELISA	Rabbit
E-AB-21129	Phospho-Smad2 (S467) Polyclonal Antibody	Q15796	H,M,R	WB IHC ELISA	Rabbit
E-AB-32919	Smad2 Polyclonal Antibody	Q15796	H,M,R	WB IHC IF ELISA	Rabbit
E-AB-32920	Smad2/3 Polyclonal Antibody	Q15796/P84022	H,M,R,Mk	WB IHC ELISA	Rabbit
E-AB-21130	Phospho-Smad3 (S425) Polyclonal Antibody	P84022	H,M,R	WB IHC ELISA	Rabbit
E-AB-21208	Phospho-Smad3 (T179) Polyclonal Antibody	P84022	H,M,R	WB IHC ELISA	Rabbit
E-AB-32923	Smad3 Polyclonal Antibody	P84022	H,M,R	WB IHC ELISA	Rabbit
E-AB-10078	Smad4 Polyclonal Antibody	Q13485	H,M,R	WB IHC ELISA	Rabbit
E-AB-32924	SMAP45 Polyclonal Antibody	O15379	H,M,R,Mk	WB IHC IF ELISA	Rabbit
E-AB-15402	SMARCB1 Polyclonal Antibody	Q12824	H,M	WB IHC ELISA	Rabbit
E-AB-14355	SNAI1 Polyclonal Antibody	O95863	H,M	WB IHC ELISA	Rabbit
E-AB-10601	SNAP25 Polyclonal Antibody	P60880	H,M,R	WB IHC ELISA	Rabbit
E-AB-15855	SOCS1 Polyclonal Antibody	O15524	H,M,R	WB IHC ELISA	Rabbit
E-AB-10603	SOCS3 Polyclonal Antibody	O14543	H,M,R	WB IHC ELISA	Rabbit
E-AB-20980	Phospho-Sp1 (T739) Polyclonal Antibody	P08047	H,M,R,Mk	WB IHC ELISA	Rabbit
E-AB-32962	SREBP-1 Polyclonal Antibody	P36956	H,R	WB IHC ELISA	Rabbit
E-AB-15419	STAR Polyclonal Antibody	P49675	H,M,R	WB IHC ELISA	Rabbit
E-AB-20981	Phospho-Stat1 (Y701) Polyclonal Antibody	P42224	H,M,R,Mk	WB IHC IP ELISA	Rabbit
E-AB-32979	Stat1 Polyclonal Antibody	P42224	H	WB IHC ELISA	Rabbit
E-AB-20982	Phospho-Stat3 (S727) Polyclonal Antibody	P40763	H,M,R,Mk	WB IHC IP ELISA	Rabbit
E-AB-20983	Phospho-Stat3 (Y705) Polyclonal Antibody	P40763	H,M,R	WB IHC IP ELISA	Rabbit
E-AB-32982	Stat3 Polyclonal Antibody	P40763	H,M,R	WB IHC IF ELISA	Rabbit

## Cancer Research

Cat.No.	Product Name	Swissprot	Reactivity	Application	Host
E-AB-32986	Stat5a Polyclonal Antibody	P42229	H,M,R	WB IF ELISA	Rabbit
E-AB-13827	Stat5b Polyclonal Antibody	P51692	H,M,R	WB IHC ELISA	Rabbit
E-AB-20985	Phospho-Stat6 (T645) Polyclonal Antibody	P42226	H,M,R	WB IHC IP ELISA	Rabbit
E-AB-20986	Phospho-Stat6 (Y641) Polyclonal Antibody	P42226	H,M,R	WB IHC ELISA	Rabbit
E-AB-32989	Stat6 Polyclonal Antibody	P42226	H,M,R	WB IHC IP ELISA	Rabbit
E-AB-32998	SUMO-1 Polyclonal Antibody	P63165	H,M,R	WB IHC IF ELISA	Rabbit
E-AB-33001	Syk Polyclonal Antibody	P43405	H	WB IHC ELISA	Rabbit
E-AB-21132	Phospho-Synaptotagmin 1/2 (T202/199) Polyclonal Antibody	P21579/Q8N9I0	H,M,R	WB IHC ELISA	Rabbit
E-AB-33005	Synaptotagmin Polyclonal Antibody	P21579/Q8N9I0	H,M,R	WB IHC ELISA	Rabbit
E-AB-33012	Syntaxin 1 Polyclonal Antibody	Q16623	H,M,R,Mk	WB IHC IF ELISA	Rabbit
E-AB-21065	Phospho-Tak1 (T187) Polyclonal Antibody	O43318	H,M,R	WB IHC ELISA	Rabbit
E-AB-33030	Tak1 Polyclonal Antibody	O43318	H,M,R	WB IHC ELISA	Rabbit
E-AB-33067	TEL Polyclonal Antibody	P41212	H,M,R	WB IHC IF ELISA	Rabbit
E-AB-12512	TERT Polyclonal Antibody	O14746	H	WB IHC ELISA	Rabbit
E-AB-13549	TFRC Polyclonal Antibody	P02786	H,M,R	WB IHC ELISA	Rabbit
E-AB-33086	TGFβ RI Polyclonal Antibody	P36897	H,M,R	WB IF ELISA	Rabbit
E-AB-33088	TGFβ RII Polyclonal Antibody	P37173	H,M,R	WB IHC ELISA	Rabbit
E-AB-33091	TGFβ2 Polyclonal Antibody	P61812	H,M,R	WB IHC ELISA	Rabbit
E-AB-33092	TGFβ3 Polyclonal Antibody	P10600	H,M,R,Mk	WB IHC ELISA	Rabbit
E-AB-21267	Phospho-TH (S19) Polyclonal Antibody	P07101	H,M,R	WB IHC IF ELISA	Rabbit
E-AB-21134	Phospho-TH (S71) Polyclonal Antibody	P07101	H,M,R	WB IHC ELISA	Rabbit
E-AB-33094	TH Polyclonal Antibody	P07101	H,M,R	WB IHC IF ELISA	Rabbit
E-AB-13028	THBS1 Polyclonal Antibody	P07996	H,M	WB IHC ELISA	Rabbit
E-AB-33106	TIMP-2 Polyclonal Antibody	P16035	H,M,R	WB IHC IF ELISA	Rabbit
E-AB-33108	TIMP-4 Polyclonal Antibody	Q99727	H,M,R	WB IHC ELISA	Rabbit

## Cancer Research

Cat.No.	Product Name	Swissprot	Reactivity	Application	Host
E-AB-40015	TNF- $\alpha$ Polyclonal Antibody	P01375	H,M,R	WB IHC	Rabbit
E-AB-33126	Topo II $\alpha$ Polyclonal Antibody	P11388	H,M,R	WB IHC ELISA	Rabbit
E-AB-33130	TPH1 Polyclonal Antibody	P17752	H,M,R	WB IHC IF ELISA	Rabbit
E-AB-33137	TRAF2 Polyclonal Antibody	Q12933	H	WB IHC ELISA	Rabbit
E-AB-33139	TRAF6 Polyclonal Antibody	Q9Y4K3	H,M,R	WB IHC ELISA	Rabbit
E-AB-10381	TRAP1 Polyclonal Antibody	Q12931	H,M,R	WB IHC ELISA	Rabbit
E-AB-33149	Trk B Polyclonal Antibody	Q16620	H,M,R	WB IHC ELISA	Rabbit
E-AB-33207	Vav2 Polyclonal Antibody	P52735	H,M	WB IHC IF ELISA	Rabbit
E-AB-21069	Phospho-VDR (S51) Polyclonal Antibody	P11473	H,M,R	WB IHC ELISA	Rabbit
E-AB-33210	VDR Polyclonal Antibody	P11473	H	WB IHC IF ELISA	Rabbit
E-AB-12675	VEGFA Polyclonal Antibody	P15692	H	WB IHC ELISA	Rabbit
E-AB-33213	VEGFD Polyclonal Antibody	O43915	H,M,R,Mk	WB IHC ELISA	Rabbit
E-AB-33217	Vimentin Polyclonal Antibody	P08670	H	WB IHC IF ELISA	Rabbit
E-AB-33231	Wnt-1 Polyclonal Antibody	P04628	H,M	WB IHC IF ELISA	Rabbit
E-AB-33234	XIAP Polyclonal Antibody	P98170	H,M,R	WB IHC ELISA	Rabbit
E-AB-33244	YAP Polyclonal Antibody	P46937	H,M,R	WB IHC IF ELISA	Rabbit



# Elabscience®

Elabscience Biotechnology Inc.

Tel: 1-240-252-7368 Fax: 1-240-252-7376

Website: [www.elabscience.com](http://www.elabscience.com)

Order: [orders@elabscience.com](mailto:orders@elabscience.com)