

Elabscience®

Cancer Research

Focus on your research Service for life science



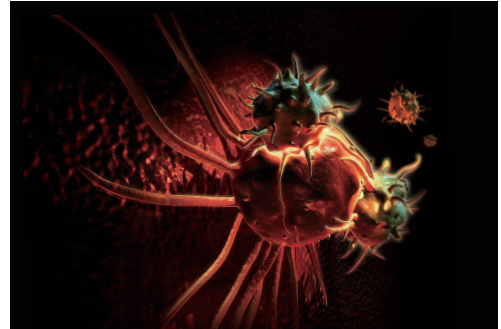
www.elabscience.com





Cancer Research

Cancer is a group of diseases involving abnormal cell growth with the potential to invade or spread to other parts of the body. Cancer research is the research into cancer to identify causes and develop strategies for prevention, diagnosis, treatment and cure, which ranges from epidemiology, molecular bioscience to the performance of clinical trials, to evaluate and compare applications of various cancer treatments. The incidence of cancer is increasing, therefore, medical scientists and researchers all over the world have been making unremitting efforts on the branches of cancer researches.



Elabscience offers a variety of validated and accurate tools for studying many popular areas of cancer research including Tumor Immunology, Tumor Invasion/ Microenvironment, Tumor Epigenetic, Tumor Stem Cells, Cell Death, Signal Transduction, etc.

Most of Elabscience products have been used by researchers all around the world. An increasing number of citations are available in scientific publications. Each of our ELISA kits is developed with elaborate design and strict validation.



Products & Services

Products

- ELISA Kits
- Primary/ Secondary Antibodies
- Flow Cytometry Antibodies
- Recombinant Proteins
- Biochemical Kits
- Labeling Kits
- Other Immunology Reagents

Services

- Custom Gene Synthesis Service
- Custom Peptide Synthesis Service
- Custom Protein Service
- Custom Antibody Service



Our Advantages





Publications in Cancer Research

Elabscience products have been cited by many top publications, e.g. Nature Medicine, Circulation, Cell Research, Gastroenterology, etc.

Flexible Gold Electrode Array for Multiplexed Immunochemical Measurement of Three Protein Biomarkers for Prostate Cancer.

ACS Appl. Mater. Interfaces, 2014, 6(22): 20137–20143.

DOI: 10.1007/s12035-014-9007-z.

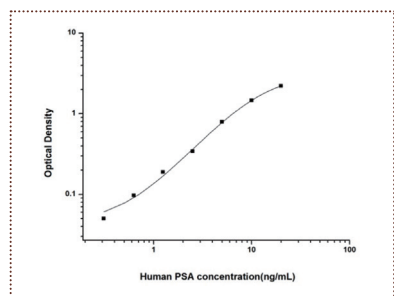
Interpretation:

A simple and novel method was presented for rapid assay of multiplexed cancer biomarkers using the flexible microchip array, by using our kits (PSA, IL6, PSMA) for the complementary validation of the research.

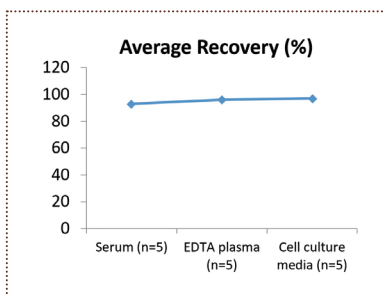
Sample: Human serum.

Product

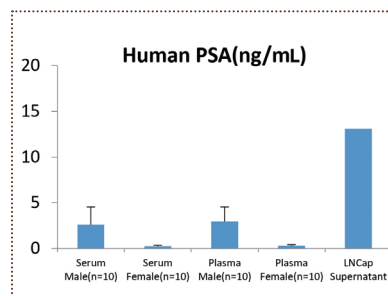
Cat. No.: E-EL-H0091 (Human PSA (Prostate Specific Antigen) ELISA Kit)



Typical Standard Curve of Human PSA ELISA Kit.



The recovery of Human PSA spiked at three different levels in samples throughout the range of the assay was evaluated in various matrices.



Human PSA was measured in biological fluids.

Novel roles of DC-SIGNR in colon cancer cell adhesion, migration, invasion, and liver metastasis.

Journal of Hematology & Oncology. 2017; 10:28.

DOI: 10.1186/s13045-016-0383-x.

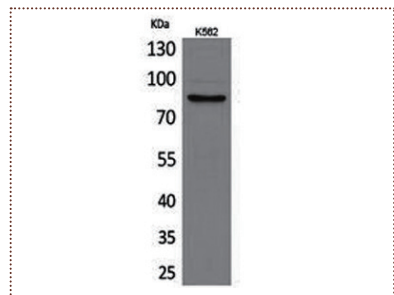
Interpretation:

DCSIGNR regulates the expression of metallothioneins by upregulating MMP9 during colon cancer liver metastasis.

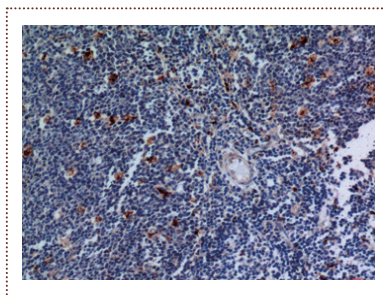
Sample: Mouse liver tissue and LoVo, LS174T and HCT-116 cells.

Product

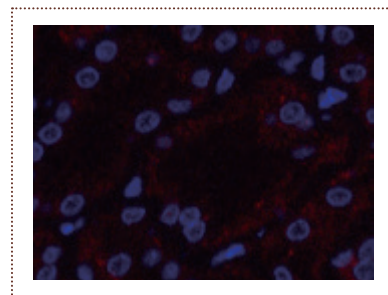
Cat. No.: E-AB-30104 (MMP9 Polyclonal Antibody)



Western Blot analysis of K562 cells using MMP9 Polyclonal Antibody at dilution of 1:500.



Immunohistochemistry of paraffin-embedded Human tonsil tissue using MMP9 Polyclonal Antibody at dilution of 1:100.



Immunofluorescence analysis of Human kidney tissue using MMP9 Polyclonal Antibody at dilution of 1:200.



Products for Popular Topics in Cancer Research

Elabscience provides 3000+ ELISA Kits and 13000+ Antibodies regarding the Cancer Research on human, mouse and rat.

ELISA Tumor Immunology

| | Cat.No. | Product Name | Test Method | Detection Range | Sensitivity |
|---------------|------------|---|-------------|-------------------|-------------|
| IFN- γ | E-EL-H0108 | Human IFN- γ (Interferon Gamma) ELISA Kit | Sandwich | 15.63--1000 pg/mL | 9.38 pg/mL |
| | E-EL-M0048 | Mouse IFN- γ (Interferon Gamma) ELISA Kit | Sandwich | 15.63--1000 pg/mL | 9.38 pg/mL |
| | E-EL-R0009 | Rat IFN- γ (Interferon Gamma) ELISA Kit | Sandwich | 31.25--2000 pg/mL | 18.75 pg/mL |
| IL-2 | E-EL-H0099 | Human IL-2(Interleukin 2) ELISA Kit | Sandwich | 7.81--500 pg/mL | 4.69 pg/mL |
| | E-EL-M0042 | Mouse IL-2(Interleukin 2) ELISA Kit | Sandwich | 15.63--1000 pg/mL | 9.38 pg/mL |
| | E-EL-R0013 | Rat IL-2(Interleukin 2) ELISA Kit | Sandwich | 31.25--2000 pg/mL | 18.75 pg/mL |
| IL-6 | E-EL-H0102 | Human IL-6(Interleukin 6) ELISA Kit | Sandwich | 7.81--500 pg/mL | 4.69 pg/mL |
| | E-EL-M0044 | Mouse IL-6(Interleukin 6) ELISA Kit | Sandwich | 31.25--2000 pg/mL | 18.75 pg/mL |
| | E-EL-R0015 | Rat IL-6(Interleukin 6) ELISA Kit | Sandwich | 12.5--800 pg/mL | 7.5 pg/mL |
| PSA | E-EL-H0091 | Human PSA(Prostate Specific Antigen) ELISA Kit | Sandwich | 0.31--20 ng/mL | 0.19 ng/mL |
| | E-EL-M0961 | Mouse PSA(Prostate Specific Antigen) ELISA Kit | Sandwich | 0.16--10 ng/mL | 0.09 ng/mL |
| | E-EL-R0796 | Rat PSA(Prostate Specific Antigen) ELISA Kit | Sandwich | 0.16--10 ng/mL | 0.09 ng/mL |
| TNF- α | E-EL-H0109 | Human TNF- α (Tumor Necrosis Factor Alpha) ELISA Kit | Sandwich | 7.81--500 pg/mL | 4.69 pg/mL |
| | E-EL-M0049 | Mouse TNF- α (Tumor Necrosis Factor Alpha) ELISA Kit | Sandwich | 31.25--2000 pg/mL | 18.75 pg/mL |
| | E-EL-R0019 | Rat TNF- α (Tumor Necrosis Factor Alpha) ELISA Kit | Sandwich | 78.13--5000 pg/mL | 46.88 pg/mL |

Signal Transduction

| | Cat.No. | Product Name | Test Method | Detection Range | Sensitivity |
|--------|------------|---|-------------|-------------------|-------------|
| EGFR | E-EL-H0060 | Human EGFR(Epidermal Growth Factor Receptor) ELISA Kit | Sandwich | 0.31--20 ng/mL | 0.19 ng/mL |
| | E-EL-M2441 | Mouse EGFR(Epidermal Growth Factor Receptor) ELISA Kit | Sandwich | 31.25--2000 pg/mL | 18.75 pg/mL |
| | E-EL-R2386 | Rat EGFR(Epidermal Growth Factor Receptor) ELISA Kit | Sandwich | 78.13--5000 pg/mL | 46.88 pg/mL |
| PKB | E-EL-H1174 | Human PKB(Protein Kinase B) ELISA Kit | Sandwich | 0.16--10 ng/mL | 0.09 ng/mL |
| | E-EL-M0972 | Mouse PKB(Protein Kinase B) ELISA Kit | Sandwich | 0.78--50 ng/mL | 0.47 ng/mL |
| | E-EL-R0807 | Rat PKB(Protein Kinase B) ELISA Kit | Sandwich | 3.13--200 IU/mL | 1.88 IU/mL |
| sgp130 | E-EL-H0082 | Human sgp130(soluble Glycoprotein 130) ELISA Kit | Sandwich | 0.25--16 ng/mL | 0.15 ng/mL |
| | E-EL-M2648 | Mouse sgp130(Soluble Glucoprotein 130) ELISA Kit | Sandwich | 15.63--1000 pg/mL | 9.38 pg/mL |
| | E-EL-R2541 | Rat sgp130(soluble Glucoprotein 130) ELISA Kit | Sandwich | 0.16--10 ng/mL | 0.09 ng/mL |
| SHH | E-EL-H0930 | Human SHH(Sonic Hedgehog Protein) ELISA Kit | Sandwich | 78.13--5000 pg/mL | 46.88 pg/mL |
| | E-EL-M0623 | Mouse SHH(Sonic Hedgehog Protein) ELISA Kit | Sandwich | 15.63--1000 pg/mL | 9.38 pg/mL |
| | E-EL-R0484 | Rat SHH(Sonic Hedgehog Protein) ELISA Kit | Sandwich | 0.16--10 ng/mL | 0.09 ng/mL |
| STAT3 | E-EL-H2132 | Human STAT3(Signal Transducer and Activator of Transcription 3) ELISA Kit | Sandwich | 0.31--20 ng/mL | 0.19 ng/mL |
| | E-EL-M1057 | Mouse STAT3(Signal Transducer and Activator of Transcription 3) ELISA Kit | Sandwich | 62.5--4000 pg/mL | 37.5 pg/mL |
| | E-EL-R1226 | Rat STAT3(Signal Transducer and Activator of Transcription 3) ELISA Kit | Sandwich | 0.16--10 ng/mL | 0.09 ng/mL |



Cell Death

| | Cat.No. | Product Name | Test Method | Detection Range | Sensitivity |
|---------------|------------|--|-------------|-------------------|-------------|
| BAX | E-EL-H0562 | Human BAX(Bcl-2 Associated X Protein) ELISA Kit | Sandwich | 0.78--50 ng/mL | 0.47 ng/mL |
| | E-EL-M0178 | Mouse BAX(Bcl-2 Associated X Protein) ELISA Kit | Sandwich | 0.16--10 ng/mL | 0.09 ng/mL |
| | E-EL-R0098 | Rat BAX(Bcl-2 Associated X Protein) ELISA Kit | Sandwich | 0.16--10 ng/mL | 0.09 ng/mL |
| Bcl-2 | E-EL-H0114 | Human Bcl-2(B-cell Leukemia/Lymphoma 2) ELISA Kit | Sandwich | 0.16--10 ng/mL | 0.09 ng/mL |
| | E-EL-M0175 | Mouse Bcl-2(B-cell Lymphoma/Leukemia 2) ELISA Kit | Sandwich | 15.63--1000 pg/mL | 9.38 pg/mL |
| | E-EL-R0096 | Rat Bcl-2(B-cell Lymphoma/Leukemia 2) ELISA Kit | Sandwich | 0.16--10 ng/mL | 0.09 ng/mL |
| mTOR | E-EL-H1655 | Human mTOR(Mammalian Target of Rapamycin) ELISA Kit | Sandwich | 0.16--10 ng/mL | 0.09 ng/mL |
| TP53 | E-EL-M1215 | Mouse TP53(Tumor Protein p53) ELISA Kit | Sandwich | 62.5--4000 pg/mL | 37.5 pg/mL |
| | E-EL-R1042 | Rat TP53(Tumor Protein p53) ELISA Kit | Sandwich | 78.13--5000 pg/mL | 46.88 pg/mL |
| TRAIL/TNFSF10 | E-EL-H1593 | Human TRAIL/TNFSF10(Tumor Necrosis Factor Related Apoptosis Inducing Ligand) ELISA Kit | Sandwich | 15.63--1000 pg/mL | 9.38 pg/mL |
| | E-EL-M1084 | Mouse TRAIL/TNFSF10(Tumor Necrosis Factor Related Apoptosis Inducing Ligand) ELISA Kit | Sandwich | 15.63--1000 pg/mL | 9.38 pg/mL |

Tumor Biomarkers

| | Cat.No. | Product Name | Test Method | Detection Range | Sensitivity |
|--------|------------|--|-------------|-------------------|-------------|
| αFP | E-EL-H0070 | Human αFP(Alpha-Fetoprotein) ELISA Kit | Sandwich | 1.56--100 ng/mL | 0.94 ng/mL |
| | E-EL-M2405 | Mouse αFP(Alpha-Fetoprotein) ELISA Kit | Sandwich | 0.16--10 ng/mL | 0.09 ng/mL |
| | E-EL-R0153 | Rat αFP(Alpha-Fetoprotein) ELISA Kit | Sandwich | 0.31--20 ng/mL | 0.19 ng/mL |
| CA125 | E-EL-H0636 | Human CA125(Carbohydrate Antigen 125) ELISA Kit | Sandwich | 3.13--200 IU/mL | 1.88 IU/mL |
| CA19-9 | E-EL-H0637 | Human CA19-9(Carbohydrate antigen19-9) ELISA Kit | Sandwich | 6.25--400 IU/mL | 3.75 IU/mL |
| NNE | E-EL-H1260 | Human NNE(Non-Neuronal Enolase) ELISA Kit | Sandwich | 0.31--20 ng/mL | 0.19 ng/mL |
| | E-EL-R2403 | Rat NNE(Non-Neuronal Enolase) ELISA Kit | Sandwich | 0.31--20 ng/mL | 0.19 ng/mL |
| NSE | E-EL-H1047 | Human NSE(Neuron Specific Enolase) ELISA Kit | Sandwich | 2.34--150 ng/mL | 1.41 ng/mL |
| | E-EL-M0089 | Mouse NSE(Neuron Specific Enolase) ELISA Kit | Sandwich | 78.13--5000 pg/mL | 46.88 pg/mL |
| | E-EL-R0058 | Rat NSE(Neuron Specific Enolase) ELISA Kit | Sandwich | 0.31--20 ng/mL | 0.19 ng/mL |



Invasion

| | Cat.No. | Product Name | Test Method | Detection Range | Sensitivity |
|-----------|------------|---|-------------|------------------|-------------|
| bFGF/FGF2 | E-EL-H0483 | Human bFGF/FGF2(Basic Fibroblast Growth Factor) ELISA Kit | Sandwich | 125–8000 pg/mL | 75 pg/mL |
| | E-EL-M0170 | Mouse bFGF/FGF2(Basic Fibroblast Growth Factor) ELISA Kit | Sandwich | 15.63–1000 pg/mL | 9.38 pg/mL |
| | E-EL-R0091 | Rat bFGF/FGF2(Basic Fibroblast Growth Factor) ELISA Kit | Sandwich | 15.63–1000 pg/mL | 9.38 pg/mL |
| MCP-1 | E-EL-H0020 | Human MCP-1(Monocyte Chemotactic Protein 1) ELISA Kit | Sandwich | 15.63–1000 pg/mL | 9.38 pg/mL |
| | E-EL-M0006 | Mouse MCP-1(Monocyte Chemotactic Protein 1) ELISA Kit | Sandwich | 15.63–1000 pg/mL | 9.38 pg/mL |
| | E-EL-R0633 | Rat MCP-1(Monocyte Chemotactic Protein 1) ELISA Kit | Sandwich | 0.16–10 ng/mL | 0.09 ng/mL |
| MMP-1 | E-EL-H1441 | Human MMP-1(Matrix Metalloproteinase 1) ELISA Kit | Sandwich | 0.16–10 ng/mL | 0.09 ng/mL |
| | E-EL-M0779 | Mouse MMP-1(Matrix Metalloproteinase 1) ELISA Kit | Sandwich | 125–8000 pg/mL | 75 pg/mL |
| | E-EL-R0617 | Rat MMP-1(Matrix Metalloproteinase 1) ELISA Kit | Sandwich | 0.16–10 ng/mL | 0.09 ng/mL |
| TIMP-1 | E-EL-H0184 | Human TIMP-1(Tissue Inhibitors of Metalloproteinase 1) ELISA Kit | Sandwich | 0.16–10 ng/mL | 0.09 ng/mL |
| | E-EL-M0641 | Mouse TIMP-1(Tissue Inhibitors of Metalloproteinase 1) ELISA Kit | Sandwich | 0.16–10 ng/mL | 0.09 ng/mL |
| | E-EL-R0540 | Rat TIMP-1(Tissue Inhibitors of Metalloproteinase 1) ELISA Kit | Sandwich | 0.16–10 ng/mL | 0.09 ng/mL |
| VEGF-A | E-EL-H0111 | Human VEGF-A(Vascular Endothelial Cell Growth Factor A) ELISA Kit | Sandwich | 31.25–2000 pg/mL | 18.75 pg/mL |
| | E-EL-M1292 | Mouse VEGF-A(Vascular Endothelial Cell Growth Factor A) ELISA Kit | Sandwich | 31.25–2000 pg/mL | 18.75 pg/mL |
| | E-EL-R2603 | Rat VEGF-A(Vascular Endothelial Cell Growth Factor A) ELISA Kit | Sandwich | 31.25–2000 pg/mL | 18.75 pg/mL |

Antibody

Tumor Stem Cell

| Cat.No. | Product Name | Host | Reactivity | Applications |
|------------|--|--------|------------|----------------------|
| E-AB-30461 | AKT1 Polyclonal Antibody | Rabbit | H, M, R | WB, IHC-p, ELISA |
| E-AB-70005 | Catenin beta Polyclonal Antibody | Rabbit | H, M, R | WB, IHC-p, IF |
| E-AB-30933 | c-Kit Polyclonal Antibody | Rabbit | H, M | WB, IHC-p, ELISA |
| E-AB-30975 | c-Myc Polyclonal Antibody | Rabbit | H, M, R | WB, IHC-p, ELISA |
| E-AB-64003 | Cyclin D1 Polyclonal Antibody | Rabbit | H, R | WB, IHC-p |
| E-AB-31281 | EGFR Polyclonal Antibody | Rabbit | H, M, R | WB, IHC-p, IF, ELISA |
| E-AB-32197 | ERBB2 Polyclonal Antibody | Rabbit | H, M, R | WB, IHC-p, ELISA |
| E-AB-70050 | IL6 Polyclonal Antibody | Rabbit | H, M, R | WB, IHC-p, IF |
| E-AB-62830 | KITLG Polyclonal Antibody | Rabbit | H, M, R | WB, IHC-p |
| E-AB-40264 | p16 Polyclonal Antibody | Rabbit | H, R | IHC-p |
| E-AB-40097 | P21 Polyclonal Antibody | Rabbit | H | WB |
| E-AB-32467 | P53 Polyclonal Antibody | Rabbit | H, Mk | WB, IHC-p, IF, ELISA |
| E-AB-60054 | PI 3 kinase p110 alpha Polyclonal Antibody | Rabbit | H, M, R | WB, IHC-p |
| E-AB-40284 | PTEN Polyclonal Antibody | Rabbit | H, M | WB, IHC-p |
| E-AB-40133 | STAT3 Polyclonal Antibody | Rabbit | H, M | WB |
| E-AB-33090 | TGFB1 Polyclonal Antibody | Rabbit | H, M, R | WB, IHC-p, IF, ELISA |
| E-AB-33121 | TNF alpha Polyclonal Antibody | Rabbit | H, M, R | WB, IHC-p, IF, ELISA |



Tumor Immunity

| Cat.No. | Product Name | Host | Reactivity | Applications |
|------------|------------------------------|--------|------------|----------------------|
| E-AB-30759 | CASP8 Polyclonal Antibody | Rabbit | H, M, R | WB, IHC-p, IF, ELISA |
| E-AB-60029 | FAS Polyclonal Antibody | Rabbit | H, M, R | WB, IHC-p |
| E-AB-31410 | FASLG Polyclonal Antibody | Rabbit | H, M | WB, IHC-p, IF, ELISA |
| E-AB-31763 | IFNG Polyclonal Antibody | Rabbit | H | WB, IHC-p, ELISA |
| E-AB-40072 | IL10 Polyclonal Antibody | Rabbit | M, R | IHC-p |
| E-AB-70176 | IL1B Monoclonal Antibody | Mouse | H, R | IHC-p, IF |
| E-AB-34261 | KRAS Polyclonal Antibody | Rabbit | H, M, R | WB, ELISA |
| E-AB-32530 | PDGFRA Polyclonal Antibody | Rabbit | H, M, R | WB, IHC-p, IF, ELISA |
| E-AB-33120 | TNFRSF1B Polyclonal Antibody | Rabbit | H, M, R | WB, IHC-p, IF, ELISA |
| E-AB-70264 | WT1 Polyclonal Antibody | Rabbit | H, M, R | IHC-p |

Epigenetics of Tumors

| Cat.No. | Product Name | Host | Reactivity | Applications |
|------------|--------------------------------|--------|------------|----------------------|
| E-AB-30520 | APC Polyclonal Antibody | Rabbit | H, M, R | WB, IHC-p, IF, ELISA |
| E-AB-40285 | E-Cadherin Polyclonal Antibody | Rabbit | H | IHC-p |
| E-AB-10329 | GNAS Polyclonal Antibody | Rabbit | H, M, R | WB, IHC-p, ELISA |
| E-AB-33476 | GPC3 Polyclonal Antibody | Rabbit | H, M, R | WB, IHC-p, ELISA |
| E-AB-31995 | MDM2 Polyclonal Antibody | Rabbit | H, M, MK | WB, IHC-p, IF, ELISA |
| E-AB-32045 | MLH1 Polyclonal Antibody | Rabbit | H, M, R | WB, IF, ELISA |
| E-AB-32752 | RB1 Polyclonal Antibody | Rabbit | H, M, R | WB, IHC-p, ELISA |
| E-AB-70117 | SMARCA4 Polyclonal Antibody | Rabbit | H, M, R | WB, IHC-p |

Apoptosis and Tumor

| Cat.No. | Product Name | Host | Reactivity | Applications |
|------------|----------------------------|--------|------------|----------------------|
| E-AB-30630 | BAX Polyclonal Antibody | Rabbit | H, M, R | WB, IHC-p, ELISA |
| E-AB-60012 | BCL2 Polyclonal Antibody | Rabbit | H, M, R | WB, IHC-p |
| E-AB-40057 | BCL-x Polyclonal Antibody | Rabbit | H, M, R | WB, IHC-p |
| E-AB-15445 | CASP10 Polyclonal Antibody | Rabbit | H | WB, IHC-p, ELISA |
| E-AB-30756 | CASP3 Polyclonal Antibody | Rabbit | H, M, R | WB, IHC-p, IF, ELISA |
| E-AB-62098 | HRAS Polyclonal Antibody | Rabbit | H, M, R | WB, IHC-p |
| E-AB-40296 | NRAS Polyclonal Antibody | Rabbit | H | IHC-p |
| E-AB-60631 | TRAIL Polyclonal Antibody | Rabbit | H, M, R | WB, IHC-p |
| E-AB-33234 | XIAP Polyclonal Antibody | Rabbit | H, M, R | WB, IHC-p, ELISA |



We are constantly developing new products to provide new tools for your Cancer Research.

Please visit our website, www.elabscience.com for up-to-date details on all the products we have.

For ordering, please email to orders@elabscience.com.

Application: WB-Western Blot, IHC-Immunohistochemistry, IF-Immunofluorescence, IP-Immunoprecipitation.
Reactivity: H-Human, R-Rat, M-Mouse, Mk-Monkey.

Elabscience Biotechnology Inc.

Web: www.elabscience.com

Tel: 1-240-252-7368

Fax: 1-240-252-7376

Email: techsupport@elabscience.com

Version: YLX000169

