

Elabscience®

Cardiovascular Research

Focus on your research Service for life science

www.elabscience.com



Cardiovascular

The cardiovascular system, is an organ system that circulates and transports nutrients, oxygen, carbon dioxide, hormones and blood cells throughout the body to provide nourishments and help in fighting diseases, stabilizing temperature, pH and maintaining homeostasis.

Many cardiovascular related researches aim to cardiovascular disease (CVD), which is a class of diseases that involve the heart or blood vessels. CVDs are the leading cause of death globally. The causes, prevention and treatment of all forms of cardiovascular disease remain active fields of biomedical research. Recent popular topics of cardiovascular research include the link between inflammation and atherosclerosis, the potential for novel therapeutic interventions and the genetics of coronary heart disease.



Elabscience offers a variety of validated and accurate tools for studying many popular areas of cardiovascular research including Angiogenesis, Atherosclerosis, Heart disease, etc.

Most of Elabscience products have been used by researchers all around the world. An increasing number of citations are available in scientific publications. Each of our antibodies and ELISA kits is developed with elaborate design and strict validation.

Products & Services

<p style="text-align: center;">Products</p> <ul style="list-style-type: none"> ELISA Kits Primary/ Secondary Antibodies Flow Cytometry Antibodies Recombinant Proteins Biochemical Kits Labeling Kits Other Immunology Reagents 	<p style="text-align: center;">Services</p> <ul style="list-style-type: none"> Custom Gene Synthesis Service Custom Peptide Synthesis Service Custom Protein Service Custom Antibody Service
---	---

Our Advantages





Publications in Cardiovascular Research

Elabscience products have been cited by many top publications, e.g. Nature Medicine, Circulation, Cell Research, Gastroenterology, etc.



Functional Metabolomics Characterizes a Key Role for N-Acetylneuraminic Acid in Coronary Artery Diseases.

Circulation, 2018 Mar 27, 137(13): 1374-1390.

DOI: 10.1161/CIRCULATIONAHA.117.031139.

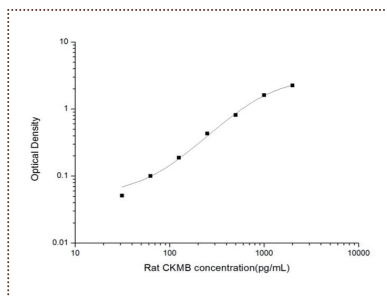
Interpretation:

The author mainly studied the potential metabolic markers of Neu5Ac in CAD disease. The NRVMs cells viability was decreased and the release of LDH and CK-MB were increased in a concentration-dependent manner when stimulated with Neu5Ac.

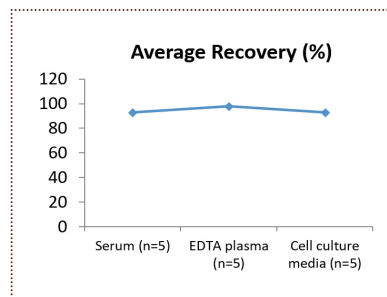
Sample: NRVMs culture supernatant.

Product

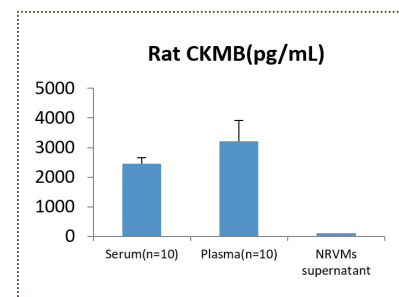
Cat. No.: E-EL-R1327 (Rat CKMB (Creatine Kinase MB Isoenzyme) ELISA Kit)



Typical Standard Curve of Rat CKMB ELISA Kit.



The recovery of Rat CKMB spiked at three different levels in samples throughout the range of the assay was evaluated in various matrices.



Rat CKMB was measured in biological fluids.



Deer thymosin beta 10 functions as a novel factor for angiogenesis and chondrogenesis during antler growth and regeneration.

Stem Cell Research & Therapy, 2018, 9: 166.

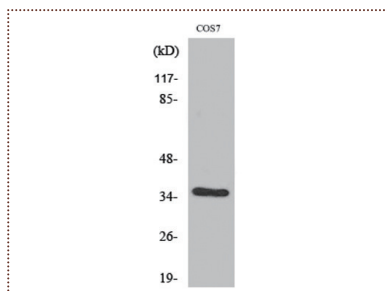
DOI: 10.1186/s13287-018-0917-y.

Interpretation:

Levels of the angiogenesis-related proteins VEGF, VEGF-B, VEGF-C, VEGF-D and their receptors VEGFR2 and VEGFR3 were all elevated in HUVECs overexpressing deer TMSB10.

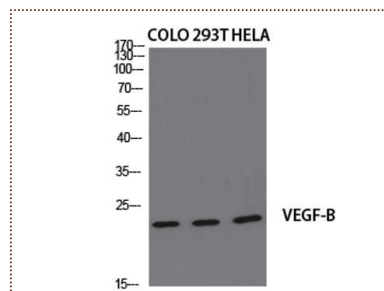
Sample: HUVEC cells.

Product



Cat. No.: E-AB-33213 (VEGFD Polyclonal Antibody)

Western Blot analysis of COS7 cells using VEGFD Polyclonal Antibody at dilution of 1:1000.



Cat. No.: E-AB-33212 (VEGFB Polyclonal Antibody)

Western Blot analysis of various cells using VEGFB Polyclonal Antibody at dilution of 1:2000.



Products for Popular Topics in Cardiovascular Research

Elabscience provides 1500+ ELISA Kits and 3500+ Antibodies regarding the Cardiovascular Research on human, mouse and rat.

ELISA

Vasculature

	Cat.No.	Product Name	Test Method	Detection Range	Sensitivity
ACE	E-EL-H0002	Human ACE(Angiotensin I Converting Enzyme) ELISA Kit	Sandwich	0.78--50 ng/mL	0.47 ng/mL
	E-EL-M0091	Mouse ACE(Angiotensin I Converting Enzyme) ELISA Kit	Sandwich	0.31--20 ng/mL	0.19 ng/mL
	E-EL-R2401	Rat ACE(Angiotensin I Converting Enzyme) ELISA Kit	Sandwich	0.31--20 ng/mL	0.19 ng/mL
Ang-II	E-EL-H0326	Human Ang- II (Angiotensin II) ELISA Kit	Competitive	31.25--2000 pg/mL	18.75 pg/mL
	E-EL-M2612	Mouse Ang- II (Angiotensin II) ELISA Kit	Competitive	15.63--1000 pg/mL	9.38 pg/mL
	E-EL-R1430	Rat Ang- II (Angiotensin II) ELISA Kit	Competitive	15.63--1000 pg/mL	9.38 pg/mL
BK	E-EL-H0596	Human BK(Bradykinin) ELISA Kit	Competitive	1.56--100 ng/mL	0.94 ng/mL
	E-EL-M0202	Mouse BK(Bradykinin) ELISA Kit	Competitive	1.56--100 ng/mL	0.94 ng/mL
	E-EL-R0124	Rat BK(Bradykinin) ELISA Kit	Competitive	1.25--80 ng/mL	0.75 ng/mL
BNP	E-EL-H0598	Human BNP(Brain Natriuretic Peptide) ELISA Kit	Competitive	31.25--2000 pg/mL	18.75 pg/mL
	E-EL-M0204	Mouse BNP(Brain Natriuretic Peptide) ELISA Kit	Competitive	15.63--1000 pg/mL	9.38 pg/mL
	E-EL-R0126	Rat BNP(Brain Natriuretic Peptide) ELISA Kit	Competitive	31.25--2000 pg/mL	18.75 pg/mL
CTNN β 1	E-EL-H0666	Human CTNN β 1(Catenin, Beta 1) ELISA Kit	Sandwich	0.16--10 ng/mL	0.09 ng/mL
	E-EL-M0248	Mouse CTNN β 1(Catenin, Beta 1) ELISA Kit	Sandwich	0.16--10 ng/mL	0.09 ng/mL
	E-EL-R0170	Rat CTNN β 1(Catenin, Beta 1) ELISA Kit	Sandwich	0.16--10 ng/mL	0.09 ng/mL

Atherosclerosis

	Cat.No.	Product Name	Test Method	Detection Range	Sensitivity
ApoB	E-EL-H0464	Human ApoB(Apolipoprotein B) ELISA Kit	Sandwich	78.13--5000 ng/mL	46.88 ng/mL
	E-EL-M0132	Mouse ApoB(Apolipoprotein B) ELISA Kit	Sandwich	31.25--2000 ng/mL	18.75 ng/mL
	E-EL-R1218	Rat ApoB(Apolipoprotein B) ELISA Kit	Sandwich	31.25--2000 ng/mL	18.75 ng/mL
Cys-C	E-EL-H0055	Human Cys-C(Cystatin C) ELISA Kit	Sandwich	6.25--400 ng/mL	3.75 ng/mL
	E-EL-M0389	Mouse Cys-C(Cystatin C) ELISA Kit	Sandwich	0.31--20 ng/mL	0.19 ng/mL
	E-EL-R0304	Rat Cys-C(Cystatin C) ELISA Kit	Sandwich	0.16--10 ng/mL	0.09 ng/mL
MCP-1	E-EL-H0020	Human MCP-1(Monocyte Chemotactic Protein 1) ELISA Kit	Sandwich	15.63--1000 pg/mL	9.38 pg/mL
	E-EL-M0006	Mouse MCP-1(Monocyte Chemotactic Protein 1) ELISA Kit	Sandwich	15.63--1000 pg/mL	9.38 pg/mL
	E-EL-R0633	Rat MCP-1(Monocyte Chemotactic Protein 1) ELISA Kit	Sandwich	0.16--10 ng/mL	0.09 ng/mL
MMP-9	E-EL-H1451	Human MMP-9(Matrix Metalloproteinase 9) ELISA Kit	Sandwich	31.25--2000 pg/mL	18.75 pg/mL
	E-EL-M0627	Mouse MMP-9(Matrix Metalloproteinase 9) ELISA Kit	Sandwich	78.13--5000 pg/mL	46.88 pg/mL
	E-EL-R0624	Rat MMP-9(Matrix Metalloproteinase 9) ELISA Kit	Sandwich	0.78--50 ng/mL	0.47 ng/mL
SAA	E-EL-H2183	Human SAA(Serum Amyloid A) ELISA Kit	Sandwich	1.25--80 ng/mL	0.75 ng/mL
	E-EL-M1046	Mouse SAA(Serum Amyloid A) ELISA Kit	Sandwich	1.56--100 ng/mL	0.94 ng/mL
	E-EL-R0881	Rat SAA(Serum Amyloid A) ELISA Kit	Sandwich	0.16--10 μ g/mL	0.09 μ g/mL



Angiogenesis

	Cat.No.	Product Name	Test Method	Detection Range	Sensitivity
ANG2	E-EL-H0008	Human ANG2(Angiopoietin 2) ELISA Kit	Sandwich	46.88--3000 pg/mL	28.13 pg/mL
	E-EL-M0098	Mouse ANG2(Angiopoietin 2) ELISA Kit	Sandwich	31.25--2000 pg/mL	18.75 pg/mL
	E-EL-R0125	Rat ANG2(Angiopoietin 2) ELISA Kit	Sandwich	62.5--4000 pg/mL	37.5 pg/mL
ANGPTL3	E-EL-H0336	Human ANGPTL3(Angiopoietin Like Protein 3) ELISA Kit	Sandwich	0.78--50 ng/mL	0.47 ng/mL
	E-EL-M2458	Mouse ANGPTL3(Angiopoietin Like Protein 3) ELISA Kit	Sandwich	0.16--10 ng/mL	0.09 ng/mL
	E-EL-R2449	Rat ANGPTL3(Angiopoietin Like Protein 3) ELISA Kit	Sandwich	62.5--4000 pg/mL	37.5 pg/mL
bFGF/FGF2	E-EL-H0483	Human bFGF/FGF2(Basic Fibroblast Growth Factor) ELISA Kit	Sandwich	125--8000 pg/mL	75 pg/mL
	E-EL-M0170	Mouse bFGF/FGF2(Basic Fibroblast Growth Factor) ELISA Kit	Sandwich	15.63--1000 pg/mL	9.38 pg/mL
	E-EL-R0091	Rat bFGF/FGF2(Basic Fibroblast Growth Factor) ELISA Kit	Sandwich	15.63--1000 pg/mL	9.38 pg/mL
VEGFR1/FLT1	E-EL-H1087	Human VEGFR1/FLT1(Vascular Endothelial Growth Factor Receptor 1) ELISA Kit	Sandwich	125--8000 pg/mL	75 pg/mL
	E-EL-M0648	Mouse VEGFR1/FLT1(Vascular Endothelial Growth Factor Receptor 1) ELISA Kit	Sandwich	0.16--10 ng/mL	0.09 ng/mL
	E-EL-R0911	Rat VEGFR1/FLT1(Vascular Endothelial Growth Factor Receptor 1) ELISA Kit	Sandwich	0.16--10 ng/mL	0.09 ng/mL

Heart disease

	Cat.No.	Product Name	Test Method	Detection Range	Sensitivity
CKMB	E-EL-H1434	Human CKMB(Creatine Kinase MB Isoenzyme) ELISA Kit	Sandwich	7.81--500 ng/mL	4.69 ng/mL
	E-EL-M0355	Mouse CKMB(Creatine Kinase MB Isoenzyme) ELISA Kit	Sandwich	78.13--5000 pg/mL	46.88 pg/mL
	E-EL-R1327	Rat CKMB(Creatine Kinase MB Isoenzyme) ELISA Kit	Sandwich	31.25--2000 pg/mL	18.75 pg/mL
TNNI3/cTn-I	E-EL-H0649	Human TNNI3/cTn-I(Troponin I Type 3, Cardiac) ELISA Kit	Sandwich	0.39--25 ng/mL	0.23 ng/mL
	E-EL-M1203	Mouse TNNI3/cTn-I(Troponin I Type 3, Cardiac) ELISA Kit	Sandwich	7.81--500 pg/mL	4.69 pg/mL
	E-EL-R1253	Rat TNNI3/cTn-I(Troponin I Type 3, Cardiac) ELISA Kit	Sandwich	31.25--2000 pg/mL	18.75 pg/mL
cTnT/TNNT2	E-EL-H0646	Human cTnT/TNNT2(Troponin T Type 2, Cardiac) ELISA Kit	Sandwich	15.63--1000 pg/mL	9.38 pg/mL
	E-EL-M1801	Mouse cTnT/TNNT2(Troponin T Type 2, Cardiac) ELISA Kit	Sandwich	15.63--1000 pg/mL	9.38 pg/mL
	E-EL-R0151	Rat cTnT/TNNT2(Troponin T Type 2, Cardiac) ELISA Kit	Sandwich	15.63--1000 pg/mL	9.38 pg/mL
D-LDH	E-EL-H0866	Human D-LDH(D-Lactate Dehydrogenase) ELISA Kit	Sandwich	1.56--100 ng/mL	0.94 ng/mL
	E-EL-M0419	Mouse D-LDH(D-Lactate Dehydrogenase) ELISA Kit	Sandwich	4.69--300 mIU/mL	2.81 mIU/mL
	E-EL-R0338	Rat D-LDH(D-Lactate Dehydrogenase) ELISA Kit	Sandwich	0.16--10 pmol/mL	0.09 pmol/mL

Coagulation

	Cat.No.	Product Name	Test Method	Detection Range	Sensitivity
F2	E-EL-M0304	Mouse F II (Coagulation Factor II) ELISA Kit	Sandwich	0.16--10 ng/mL	0.09 ng/mL
	E-EL-R0223	Rat F II (Coagulation Factor II) ELISA Kit	Sandwich	0.16--10 ng/mL	0.09 ng/mL
F5	E-EL-H0764	Human F5(Coagulation Factor V) ELISA Kit	Sandwich	62.5--4000 pg/mL	37.5 pg/mL
	E-EL-M0306	Mouse F5(Coagulation Factor V) ELISA Kit	Sandwich	3.13--200 ng/mL	1.88 ng/mL
F8	E-EL-H3641	Human F8(Coagulation Factor VIII) ELISA Kit	Sandwich	46.88--3000 mIU/mL	28.13 mIU/mL
	E-EL-M0307	Mouse F8(Coagulation Factor VIII) ELISA Kit	Sandwich	0.31--20 ng/mL	0.19 ng/mL
	E-EL-R2377	Rat F8(Coagulation Factor VIII) ELISA Kit	Sandwich	7.81--500 pg/mL	4.69 pg/mL
VWF	E-EL-H2168	Human VWF(Von Willebrand Factor) ELISA Kit	Sandwich	1.56--100 ng/mL	0.94 ng/mL
	E-EL-M1247	Mouse VWF(von Willebrand Factor) ELISA Kit	Sandwich	1.25--80 ng/mL	0.75 ng/mL
	E-EL-R1079	Rat VWF(Von Willebrand Factor) ELISA Kit	Sandwich	0.16--10 ng/mL	0.09 ng/mL



Blood Pressure Regulation-Adipocytokines

	Cat.No.	Product Name	Test Method	Detection Range	Sensitivity
ADP/Acrp30	E-EL-H0004	Human ADP/Acrp30(Adiponectin) ELISA Kit	Sandwich	0.78--50 ng/mL	0.47 ng/mL
	E-EL-M0002	Mouse ADP/Acrp30(Adiponectin) ELISA Kit	Sandwich	15.63--1000 pg/mL	9.38 pg/mL
	E-EL-R0329	Rat ADP/Acrp30(Adiponectin) ELISA Kit	Sandwich	46.88--3000 pg/mL	28.13 pg/mL
LEP	E-EL-H0113	Human LEP(Leptin) ELISA Kit	Sandwich	78.13--5000 pg/mL	46.88 pg/mL
	E-EL-M0039	Mouse LEP(Leptin) ELISA Kit	Sandwich	125--8000 pg/mL	75 pg/mL
	E-EL-R0582	Rat LEP(Leptin) ELISA Kit	Sandwich	0.16--10 ng/mL	0.09 ng/mL
RETN	E-EL-H1213	Human RETN(Resistin) ELISA Kit	Sandwich	31.25--2000 pg/mL	18.75 pg/mL
	E-EL-M0635	Mouse RETN(Resistin) ELISA Kit	Sandwich	78.13--5000 pg/mL	46.88 pg/mL
	E-EL-R0614	Rat RETN(Resistin) ELISA Kit	Sandwich	0.31--20 ng/mL	0.19 ng/mL

Antibody

Angiogenesis

Cat.No.	Product Name	Host	Reactivity	Applications
E-AB-30406	ACE1 Polyclonal Antibody	Rabbit	H, M, R	WB, IHC-p, ELISA
E-AB-33759	ADGRB1 Polyclonal Antibody	Rabbit	H, M, R	WB, IHC-p
E-AB-17010	COX2 Polyclonal Antibody	Rabbit	H, M, R	IHC-p, ELISA
E-AB-16409	EPO Polyclonal Antibody	Rabbit	H, M, R	WB, IHC-p, ELISA
E-AB-33626	FGF2 Polyclonal Antibody	Rabbit	H, M, R	WB, IHC-p, ELISA
E-AB-31442	FLK1 Polyclonal Antibody	Rabbit	H, M	WB, IHC-p, IF, ELISA
E-AB-33916	FLT1 Polyclonal Antibody	Rabbit	H, M, R	WB, IHC-p, ELISA
E-AB-10362	HGF Polyclonal Antibody	Rabbit	H, M, R	IHC-p, ELISA
E-AB-32054	MMP2 Polyclonal Antibody	Rabbit	H, M, R, MK	WB, IHC-p, IF, ELISA
E-AB-31531	MMP9 Polyclonal Antibody	Rabbit	H	WB, IHC-p, IF, ELISA
E-AB-32266	NOS3 Polyclonal Antibody	Rabbit	H, M, R	WB, ELISA
E-AB-36488	TEK Polyclonal Antibody	Rabbit	H, M, R	WB, ELISA
E-AB-13028	THBS1 Polyclonal Antibody	Rabbit	H, M	WB, IHC-p, ELISA

Atherosclerosis

Cat.No.	Product Name	Host	Reactivity	Applications
E-AB-30184	APOA1 Polyclonal Antibody	Rabbit	H, M	WB, IHC-p, ELISA
E-AB-15500	APOB Polyclonal Antibody	Rabbit	H, M, R	IHC-p, ELISA
E-AB-30530	APOE Polyclonal Antibody	Rabbit	H, M, R	WB, IHC-p, ELISA
E-AB-60294	CETP Polyclonal Antibody	Rabbit	H, M, R	WB, IHC-p
E-AB-70239	LDLR Polyclonal Antibody	Rabbit	H, M, R	IHC-p
E-AB-70326	LMNA Polyclonal Antibody	Rabbit	H, M, R	WB, IHC-p
E-AB-32647	PPARG Polyclonal Antibody	Rabbit	H, M, R	WB, IHC-p, IF, ELISA



Heart disease

Cat.No.	Product Name	Host	Reactivity	Applications
E-AB-33797	AMPK gamma2 Polyclonal Antibody	Rabbit	H, M	WB, IHC-p, IF, ELISA
E-AB-10265	Connexin 43 Polyclonal Antibody	Rabbit	H, M	WB, ELISA
E-AB-40072	IL10 Polyclonal Antibody	Rabbit	M, R	IHC-p
E-AB-70176	IL1B Monoclonal Antibody	Mouse	H, R	IHC-p, IF
E-AB-30148	JAG1 Polyclonal Antibody	Rabbit	H, M, R	WB, IHC-p, IF, ELISA
E-AB-33090	TGFB1 Polyclonal Antibody	Rabbit	H, M, R	WB, IHC-p, IF, ELISA
E-AB-33121	TNF alpha Polyclonal Antibody	Rabbit	H, M, R	WB, IHC-p, IF, ELISA
E-AB-14442	VWF Polyclonal Antibody	Rabbit	H	IHC-p, ELISA
E-AB-32054	MMP2 Polyclonal Antibody	Rabbit	H, M, R, MK	WB, IHC-p, IF, ELISA
E-AB-31531	MMP9 Polyclonal Antibody	Rabbit	H	WB, IHC-p, IF, ELISA
E-AB-32266	NOS3 Polyclonal Antibody	Rabbit	H, M, R	WB, ELISA
E-AB-36488	TEK Polyclonal Antibody	Rabbit	H, M, R	WB, ELISA
E-AB-13028	THBS1 Polyclonal Antibody	Rabbit	H, M	WB, IHC-p, ELISA

Vasculature

Cat.No.	Product Name	Host	Reactivity	Applications
E-AB-30461	AKT1 Polyclonal Antibody	Rabbit	H, M, R	WB, IHC-p, ELISA
E-AB-70005	Catenin beta Polyclonal Antibody	Rabbit	H, M, R	WB, IHC-p, IF
E-AB-13213	COL18A1 Polyclonal Antibody	Rabbit	H, M	IHC-p, ELISA
E-AB-31281	EGFR Polyclonal Antibody	Rabbit	H, M, R	WB, IHC-p, IF, ELISA
E-AB-10300	ELN Polyclonal Antibody	Rabbit	H	WB, IHC-p, ELISA
E-AB-34276	ENG Polyclonal Antibody	Rabbit	H	WB, IHC-p, ELISA
E-AB-31662	HIF1 alpha Polyclonal Antibody	Rabbit	H, M, R	WB, IHC-p, IF, ELISA
E-AB-34261	KRAS Polyclonal Antibody	Rabbit	H, M, R	WB, ELISA
E-AB-40054	MYD88 Polyclonal Antibody	Rabbit	H	WB
E-AB-32467	P53 Polyclonal Antibody	Rabbit	H, MK	WB, IHC-p, IF, ELISA
E-AB-60054	PI 3 kinase p110 alpha Polyclonal Antibody	Rabbit	H, M, R	WB, IHC-p
E-AB-40284	PTEN Polyclonal Antibody	Rabbit	H, M	WB, IHC-p
E-AB-34159	SMAD4 Polyclonal Antibody	Rabbit	H, M, R, MK	IHC-p, IF, ELISA
E-AB-33378	VEGFA Polyclonal Antibody	Rabbit	H	WB, IHC-p, ELISA



We are constantly developing new products to provide new tools for your Cardiovascular Research.

Please visit our website, www.elabscience.com for up-to-date details on all the products we have.

For ordering, please email to orders@elabscience.com.

Elabscience Biotechnology Inc.

Web: www.elabscience.com

Tel: 1-240-252-7368

Fax: 1-240-252-7376

Email: techsupport@elabscience.com

Version: YLX000171

