The image is a composite of two microscopic views. The upper portion shows several red blood cells, which are biconcave discs, floating against a dark red background. The lower portion shows a detailed view of a cell surface, likely a cell membrane, with various receptors and proteins protruding from it. The surface is rendered in shades of blue and green, with a textured, almost crystalline appearance. The overall composition is scientific and focused on cellular biology.

Cell Biology Antibodies

Elabscience®

Focus On Lab Research Service For Life Science

About Elabscience

Elabscience specializes in immunodiagnostic technology for the life Science community. We have complete R&D and manufacture platform and have good quality control for every kit. We endeavor to reduce lot to lot variation to keep your experiment results more consistent and precise. Through unremitting efforts and development, our customers have spread in more than 100 countries and districts all over the world. Elabscience's major products are Proteins, Antibodies, ELISA Kits, CLIA Kits, Labeling Kits and related reagents. Elabscience also provides custom services for our customers including Protein Expression and Purification Service, Antibody Customized Service, ELISA Customized Service, Cell Biology Service, Molecular Biology Service and Whole Research Project Solutions.

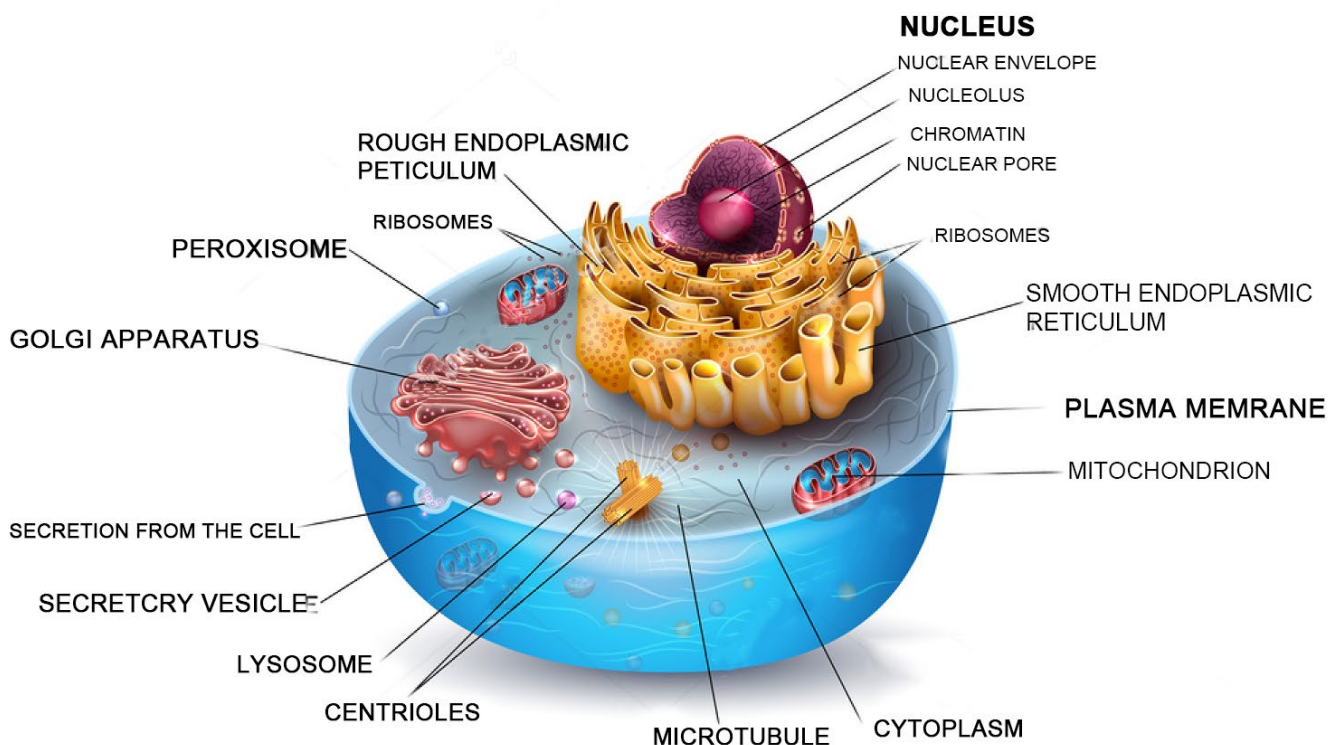
Product introduction



cell Biology

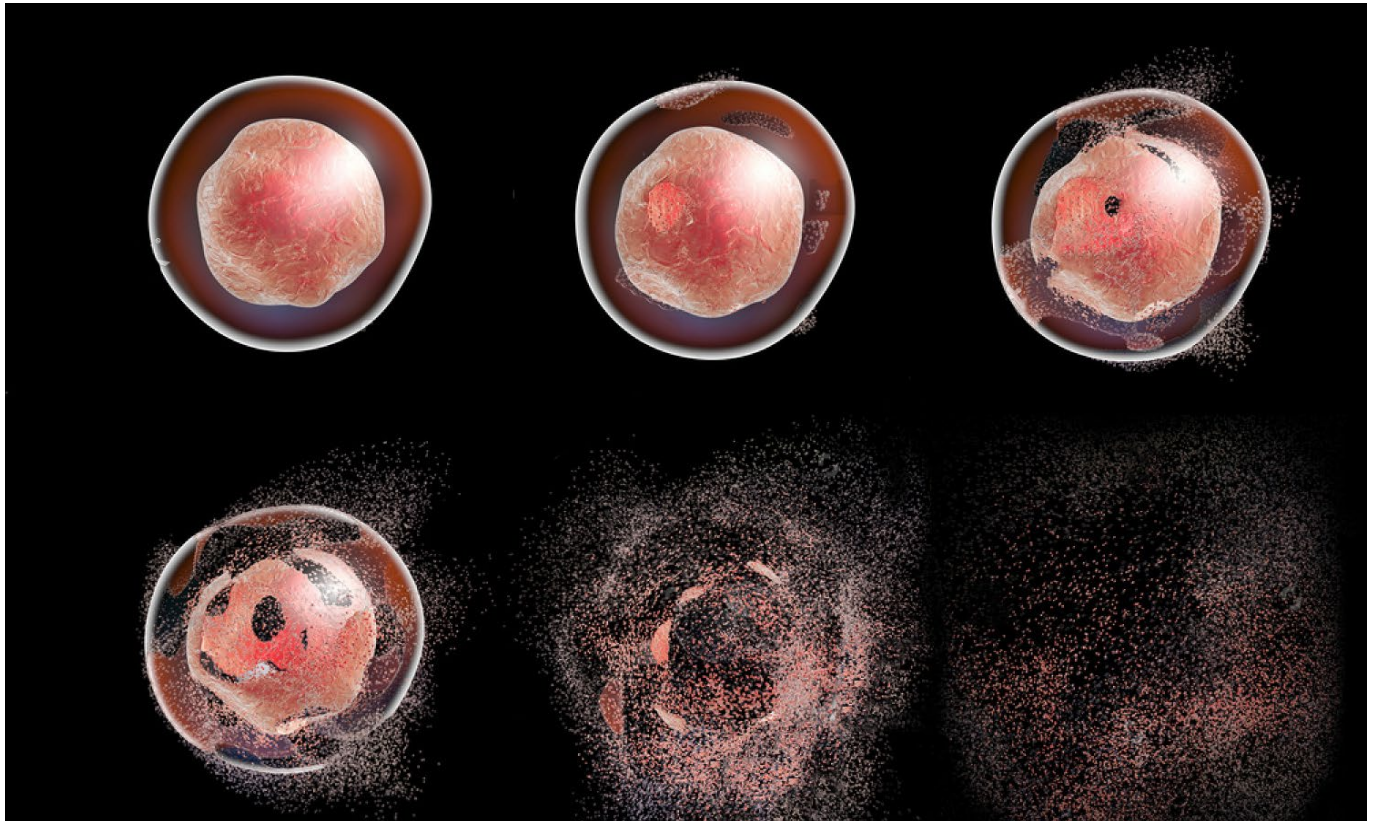
Cell biology is a branch of biology that studies the different structures and functions of the cell and focuses mainly on the idea of the cell as the basic unit of life. Cell biology explains the structure, organization of the organelles they contain, their physiological properties, metabolic processes, signaling pathways, life cycle, and interactions with their environment. This is done both on a microscopic and molecular level as it encompasses prokaryotic cells and eukaryotic cells. Knowing the components of cells and how cells work is fundamental to all biological sciences; it is also essential for research in bio-medical fields such as cancer, and other diseases. Research in cell biology is closely related to genetics, biochemistry, molecular biology, immunology, and developmental biology.

ANATOMY OF A CELL



Product details

Apoptosis



Cat.No.	Product Name	Swissprot	Reactivity	Application
ESAP13617	KLLN Polyclonal Antibody	B2CW77	H	ELISA WB
EAP1455	HAX1 Polyclonal Antibody	O00165	H M R	W B IHC IF
ENT1841	Galectin-9 Polyclonal Antibody	O00182	H,M,R	WB,IHC,IF,ELISA
ESAP16859	HRK Polyclonal Antibody	O00198	H	ELISA IHC
ENT1410	DR4 Polyclonal Antibody	O00220	H,Mk	WB,IF,ELISA
ENC054	ICAD Polyclonal Antibody	O00273	H	WB,IHC,ELISA
ENT3466	OPG Polyclonal Antibody	O00300	H,M	WB,IHC,IF,ELISA
EAP2389	IFRD1 Polyclonal Antibody	O00458	H M R	WB IHC IF
ESAP13075	PODXL Polyclonal Antibody	O00592	H	ELISA IHC
ESAP11295	CYR61 Polyclonal Antibody	O00622	H,M,R	ELISA WB IHC
ESAP13846	SCD Polyclonal Antibody	O00767	H	ELISA WB IHC

Apoptosis

Cat.No.	Product Name	Swissprot	Reactivity	Application
ESAP16562	PIK3R2 Polyclonal Antibody	O00459	H,M,R	ELISA WB IHC
ESAP14795	ADAM10 Polyclonal Antibody	O14672	H,M,R	ELISA WB IHC
ESAP14001	EI24 Polyclonal Antibody	O14681	H,M,R	ELISA IHC
ESAP12390	APAF1 Polyclonal Antibody	O14727	H,M,R	ELISA WB IHC
EAP2301	PDCD5 Polyclonal Antibody	O14737	H	WB IHC IF
ENT2303	IKK β Polyclonal Antibody	O14920	H,M,R	WB,IHC,ELISA
ENP0140	Phospho-IKK α (T23) Polyclonal Antibody	O15111	H,M,R	WB,IHC,ELISA
ENT2300	IKK α Polyclonal Antibody	O15111	H,M,R	WB,IHC,ELISA
ENP0141	Phospho-IKK α/β (S176/177) Polyclonal Antibody	O15111/O14920	H,M,R	WB,IHC,ELISA
ENP0142	Phospho-IKK α/β (S180/181) Polyclonal Antibody	O15111/O14920	H,M,R	WB,IHC,ELISA
ENT2301	IKK α/β Polyclonal Antibody	O15111/O14920	H,M,R	WB,IHC,ELISA
ENT2693	MDMX Polyclonal Antibody	O15151	H,M,R	WB,IHC,ELISA
EAP0453	BIRC5 Polyclonal Antibody	O15392	H M R	WB IHC IF
ESAP16802	CFLAR Polyclonal Antibody	O15519	H,M	ELISA WB IHC
ENT4985	ZNHIT1 Polyclonal Antibody	O43257	H,M	WB,ELISA
EAP1643	PRODH Polyclonal Antibody	O43272	H M	WB IHC
ENP0548	Phospho-DAPK3 (T265) Polyclonal Antibody	O43293	H,M,R	WB,IHC,IF,ELISA
ENT1289	DAPK3 Polyclonal Antibody	O43293	H,M,R	WB,IHC,ELISA
EAP0981	RIPK2 Polyclonal Antibody	O43353	H M R	WB IHC IF
ENP0797	Phospho-RIP2 (S176) Polyclonal Antibody	O43353	H,M	WB,IHC,ELISA
EAP1589	HTRA2 Polyclonal Antibody	O43464	H M R	WB IHC IF
EAP3415	HBXIP Polyclonal Antibody	O43504	H M	WB
ENT4785	TWEAK Polyclonal Antibody	O43508	H,M	WB,IHC,IF,ELISA
EAP2309	SGTA Polyclonal Antibody	O43765	H	WB IHC IF
ESAP16689	CD5L Polyclonal Antibody	O43866	H,M	ELISA IHC

Apoptosis

Cat.No.	Product Name	Swissprot	Reactivity	Application
ESAP16562	PIK3R2 Polyclonal Antibody	O00459	H,M,R	ELISA WB IHC
ESAP14795	ADAM10 Polyclonal Antibody	O14672	H,M,R	ELISA WB IHC
ESAP14001	EI24 Polyclonal Antibody	O14681	H,M,R	ELISA IHC
ESAP12390	APAF1 Polyclonal Antibody	O14727	H,M,R	ELISA WB IHC
EAP2301	PDCD5 Polyclonal Antibody	O14737	H	WB IHC IF
ENT2303	IKK β Polyclonal Antibody	O14920	H,M,R	WB,IHC,ELISA
ENP0140	Phospho-IKK α (T23) Polyclonal Antibody	O15111	H,M,R	WB,IHC,ELISA
ENT2300	IKK α Polyclonal Antibody	O15111	H,M,R	WB,IHC,ELISA
ENP0141	Phospho-IKK α/β (S176/177) Polyclonal Antibody	O15111/O14920	H,M,R	WB,IHC,ELISA
ENP0142	Phospho-IKK α/β (S180/181) Polyclonal Antibody	O15111/O14920	H,M,R	WB,IHC,ELISA
ENT2301	IKK α/β Polyclonal Antibody	O15111/O14920	H,M,R	WB,IHC,ELISA
ENT2693	MDMX Polyclonal Antibody	O15151	H,M,R	WB,IHC,ELISA
EAP0453	BIRC5 Polyclonal Antibody	O15392	H M R	WB IHC IF
ESAP16802	CFLAR Polyclonal Antibody	O15519	H,M	ELISA WB IHC
ENT4985	ZNHIT1 Polyclonal Antibody	O43257	H,M	WB,ELISA
EAP1643	PRODH Polyclonal Antibody	O43272	H M	WB IHC
ENP0548	Phospho-DAPK3 (T265) Polyclonal Antibody	O43293	H,M,R	WB,IHC,IF,ELISA
ENT1289	DAPK3 Polyclonal Antibody	O43293	H,M,R	WB,IHC,ELISA
EAP0981	RIPK2 Polyclonal Antibody	O43353	H M R	WB IHC IF
ENP0797	Phospho-RIP2 (S176) Polyclonal Antibody	O43353	H,M	WB,IHC,ELISA
EAP1589	HTRA2 Polyclonal Antibody	O43464	H M R	WB IHC IF
EAP3415	HBXIP Polyclonal Antibody	O43504	H M	WB
ENT4785	TWEAK Polyclonal Antibody	O43508	H,M	WB,IHC,IF,ELISA
EAP2309	SGTA Polyclonal Antibody	O43765	H	WB IHC IF
ESAP16689	CD5L Polyclonal Antibody	O43866	H,M	ELISA IHC

Apoptosis

Cat.No.	Product Name	Swissprot	Reactivity	Application
EAP0303	GAS2 Polyclonal Antibody	O43903	H M R	WB IHC IF
EAP1701	BNIP3L Polyclonal Antibody	O60238	H M R	WB
ESAP15308	FAIM3 Polyclonal Antibody	O60667	H	ELISA WB
EAP2631	NOL3 Polyclonal Antibody	O60936	H M R	WB IHC IF
EAP1548	ROCK2 Polyclonal Antibody	O75116	H M R	WB IHC IF
ESAP15354	GADD45B Polyclonal Antibody	O75293	H,M	ELISA IHC
EAP1912	PDCD6 Polyclonal Antibody	O75340	H M R	WB IHC IF
ESAP14522	NME6 Polyclonal Antibody	O75414	H,M,R	ELISA WB
ESAP16711	MAF Polyclonal Antibody	O75444	H,M,R	ELISA WB IHC
ESAP15259	TNFRSF21 Polyclonal Antibody	O75509	H,M,R	ELISA IHC
ESAP17070	PGLYRP1 Polyclonal Antibody	O75594	H,M,R	ELISA IHC
EAP2151	ALDH1L1 Polyclonal Antibody	O75891	H M R	WB IHC
ESAP17160	SEC14L2 Polyclonal Antibody	O76054	H,M	ELISA WB IHC
ESAP12484	DFFB Polyclonal Antibody	O76075	H,M,R	ELISA IHC
EAP4091	CST7 Polyclonal Antibody	O76096	H	WB
ENT1411	DRAK2 Polyclonal Antibody	O94768	H,M,R	WB,IHC,ELISA
ESAP10977	ATG12 Polyclonal Antibody	O94817	H	ELISA IHC
ENT2129	Hexim1 Polyclonal Antibody	O94992	H,M,R	WB,IHC,IF,ELISA
ENT4809	UBR5 Polyclonal Antibody	O95071	H,M	WB,IHC,ELISA
ENT2740	Mfn2 Polyclonal Antibody	O95140	H,M,R	WB,IHC,ELISA
ESAP16911	KIF4A Polyclonal Antibody	O95239	H,M	ELISA IHC
ENT1832	GADD 45γ Polyclonal Antibody	O95257	H,M,R	WB,IHC,IF,ELISA
EAP0130	ATG7 Polyclonal Antibody	O95352	H M R	WB IHC
ENT4685	TNF-IP 8 Polyclonal Antibody	O95379	H,M	WB,IHC,IF,ELISA
ENT1303	DcR3 Polyclonal Antibody	O95407	H	WB,IHC,IF,ELISA

Apoptosis

Cat.No.	Product Name	Swissprot	Reactivity	Application
ENT0441	Bag-4 Polyclonal Antibody	O95429	H,M,R	WB,IHC,ELISA
ESAP11366	ETHE1 Polyclonal Antibody	O95571	H,M	ELISA WB IHC
EAP3374	BAG2 Polyclonal Antibody	O95816	H M R	WB IHC
ESAP14114	BAG3 Polyclonal Antibody	O95817	H,M	ELISA WB IHC
ENT0149	AIF-M1 Polyclonal Antibody	O95831	H,M,R	WB,IHC,IF,ELISA
ESAP11058	LATS1 Polyclonal Antibody	O95835	H	ELISA IHC
ENT2543	LATS1/2 Polyclonal Antibody	O95835/Q9NRM7	H,M	IHC,ELISA
ESAP15086	BCL10 Polyclonal Antibody	O95999	H,M,R	ELISA WB IHC
EAP1098	PAK4 Polyclonal Antibody	O96013	H M R	WB IHC
ESAP10754	SOD1 Polyclonal Antibody	P00441	H,M,R	ELISA WB
ENC077	Cleaved-Thrombin APII (R327) Polyclonal Antibody	P00734	H	WB,ELISA
ENT3862	Prothrombin Polyclonal Antibody	P00734	H,M,R	WB,IHC,IF,ELISA
ENT1251	Cystatin C Polyclonal Antibody	P01034	H,M,R,Mk	WB,ELISA
ENT1249	Cystatin A Polyclonal Antibody	P01040	H	WB,IHC,IF,ELISA
ENT2960	N/H/K-Ras Polyclonal Antibody	P01111/P01112/ P01116	H,M,R	WB,IHC,ELISA
EAP3118	HRAS Polyclonal Antibody	P01112	H M R	WB IHC
ENC057	Cleaved-Lamin A (D230) Polyclonal Antibody	P02545	H,M,R	WB,IHC,ELISA
ENC058	Cleaved-Lamin A (N231) Polyclonal Antibody	P02545	H,M,R	WB,IHC,ELISA
ENT2521	Lamin A/C Polyclonal Antibody	P02545	H,M,R	WB,IHC,ELISA
ESAP10567	LMNA Polyclonal Antibody	P02545	H,M,R	ELISA WB IHC
EAP1774	Phospho-RAF1-S621 Polyclonal Antibody	P04049	H	WB IF
ENP0239	Phospho-Raf-1 (S259) Polyclonal Antibody	P04049	H,M,R,Mk	WB,IHC,ELISA
ENP0435	Phospho-Raf-1 (S301) Polyclonal Antibody	P04049	H,M,R	WB,ELISA
ENP0516	Phospho-Raf-1 (S338) Polyclonal Antibody	P04049	H,M,R	WB,ELISA
ENP0690	Phospho-Raf-1 (S296) Polyclonal Antibody	P04049	H,M,R	WB,IHC,ELISA

Apoptosis

Cat.No.	Product Name	Swissprot	Reactivity	Application
ENT3979	Raf-1 Polyclonal Antibody	P04049	H,M,R	WB,IHC,ELISA
EAP0391	SOD2 Polyclonal Antibody	P04179	H M R	WB IHC IF
ENK035	Acetyl-p53 (K370) Polyclonal Antibody	P04637	H	WB,ELISA
ENK036	Acetyl-p53 (K372) Polyclonal Antibody	P04637	H	WB,ELISA
ENK046	Acetyl-p53 (K373) Polyclonal Antibody	P04637	H	WB,ELISA
ENK047	Acetyl-p53 (K382) Polyclonal Antibody	P04637	H	WB,ELISA
ENK051	Acetyl-p53 (K320) Polyclonal Antibody	P04637	H	WB,ELISA
ENP0205	Phospho-p53 (S15) Polyclonal Antibody	P04637	H,R	WB,IHC,IP,IF,ELISA
ENP0206	Phospho-p53 (S20) Polyclonal Antibody	P04637	H,M,R,Mk	WB,IHC,ELISA
ENP0207	Phospho-p53 (S315) Polyclonal Antibody	P04637	H	WB,IHC,IP,ELISA
ENP0208	Phospho-p53 (S33) Polyclonal Antibody	P04637	H	WB,ELISA
ENP0209	Phospho-p53 (S46) Polyclonal Antibody	P04637	H,Mk	WB,ELISA
ENP0210	Phospho-p53 (S6) Polyclonal Antibody	P04637	H,Mk	WB,IHC,IP,ELISA
ENP0211	Phospho-p53 (S9) Polyclonal Antibody	P04637	H,Mk	WB,IHC,ELISA
ENP0212	Phospho-p53 (T18) Polyclonal Antibody	P04637	H,M,R	WB,ELISA
ENP0281	Phospho-p53 (S37) Polyclonal Antibody	P04637	H	WB,IHC,ELISA
ENP0773	Phospho-p53 (S366) Polyclonal Antibody	P04637	H	WB,IHC,ELISA
ENT3528	p53 Polyclonal Antibody	P04637	H,M,R,Mk	WB,IHC,IF,ELISA
ENH007	Di-Methyl-p53 (K370) Polyclonal Antibody	P04637	H	WB,ELISA
ESAP10470	LGALS2 Polyclonal Antibody	P05162	H,M	ELISA WB IHC
ESAP10159	ANXA5 Polyclonal Antibody	P08758	H,M,R	ELISA WB IHC
ESAP14356	LGALS1 Polyclonal Antibody	P09382	H,M,R	ELISA WB IHC
ENC073	Cleaved-PARP-1 (G215) Polyclonal Antibody	P09874	H	WB,ELISA
ENC101	Cleaved-PARP-1 (D214) Polyclonal Antibody	P09874	H,M	WB,ELISA
ESAP13072	PARP1 Polyclonal Antibody	P09874	H,M,R	ELISA WB IHC

Apoptosis

Cat.No.	Product Name	Swissprot	Reactivity	Application
EAP2555	IFI6 Polyclonal Antibody	P09912	H M	WB
EAP2736	TFPT Polyclonal Antibody	P0C1Z6	H M R	IHC IF
EAP2060	SRGN Polyclonal Antibody	P10124	H M	WB IHC IF
EAP1029	GZMB Polyclonal Antibody	P10144	H M	WB IHC IF
ENT2049	Granzyme B/H Polyclonal Antibody	P10144/P20718	H,M,R	WB,IHC,ELISA
ESAP13830	RRAS Polyclonal Antibody	P10301	H,M,R	ELISA WB IHC
ENM0041	Bcl-2 Monoclonal Antibody	P10415	H, M, R	WB, IHC
ENP0031	Phospho-Bcl-2 (S70) Polyclonal Antibody	P10415	H,Mk	WB,IHC,IP,ELISA
ENP0032	Phospho-Bcl-2 (T56) Polyclonal Antibody	P10415	H	WB,IHC,IP,IF,ELISA
ENP0646	Phospho-Bcl-2 (S87) Polyclonal Antibody	P10415	H,M,R	WB,IHC,ELISA
ENT0470	Bcl-2 Polyclonal Antibody	P10415	H,M,R	WB,IHC,IF,ELISA
ESAP13200	SLC25A4 Polyclonal Antibody	P12235	H,M,R	ELISA WB IHC
ENT0241	ANT3 Polyclonal Antibody	P12236	H	WB,IHC,ELISA
ESAP16134	CKMT1A/CKMT1B Polyclonal Antibody	P12532	H,M	ELISA WB IHC
ENP0716	Phospho-Raf-B (S602) Polyclonal Antibody	P15056	H,M,R	WB,IHC,ELISA
ENP0780	Phospho-Raf-B (S446) Polyclonal Antibody	P15056	H,M	WB,IHC,ELISA
ENT3984	Raf-B Polyclonal Antibody	P15056	H,M,R	WB,IHC,ELISA
EAP1325	BPI Polyclonal Antibody	P17213	H M	WB IHC IF
EAP1958	SMPD1 Polyclonal Antibody	P17405	H M R	WB IHC IF
ENT2286	IGFBP3 Polyclonal Antibody	P17936	H,M	WB,IHC,ELISA
EAP0448	TNFRSF1A Polyclonal Antibody	P19438	H M	WB IF
ENP0183	Phospho-NFκB-p105 (S893) Polyclonal Antibody	P19838	H	WB,IHC,ELISA
ENP0184	Phospho-NFκB-p105 (S907) Polyclonal Antibody	P19838	H	WB,IHC,IP,ELISA
ENP0185	Phospho-NFκB-p105 (S932) Polyclonal Antibody	P19838	H,M,R	WB,IHC,ELISA
ENP0186	Phospho-NFκB-p105/p50 (S337) Polyclonal Antibody	P19838	H,M,R	WB,IHC,IF,ELISA

Apoptosis

Cat.No.	Product Name	Swissprot	Reactivity	Application
ENP0862	Phospho-NFκB-p105 (S927) Polyclonal Antibody	P19838	H,M	WB,IHC,IF,ELISA
ENT3098	NFκB-p105 Polyclonal Antibody	P19838	H,M	WB,IHC,IF,ELISA
ENT3100	NFκB-p105/p50 Polyclonal Antibody	P19838	H,M	WB,IHC,IF,ELISA
ENT4688	TNF-R2 Polyclonal Antibody	P20333	H,M,R	WB,IHC,IF,ELISA
ENM0036	Lamin B1 Monoclonal Antibody	P20700	H, R, M	WB, IP
ENT2522	Lamin B1 Polyclonal Antibody	P20700	H,M,R	WB,IHC,ELISA
ENT3739	PITSLRE Polyclonal Antibody	P21127	H,M	WB,IHC,ELISA
ESAP16954	MAL Polyclonal Antibody	P21145	H,M,R	ELISA IHC
EAP0140	VDAC1 Polyclonal Antibody	P21796	H M R	WB IHC IF
EAP0163	TGM2 Polyclonal Antibody	P21980	H M R	WB IHC
EAP3114	NR4A1 Polyclonal Antibody	P22736	H M R	WB IHC IF
ENP1019	Phospho-Nur77 (S351) Polyclonal Antibody	P22736	H,M,R	IHC,ELISA
EAP1009	RPS3 Polyclonal Antibody	P23396	H M R	WB IHC IF
ENP0154	Phospho-JAK1 (Y1022) Polyclonal Antibody	P23458	H,M,R	WB,IHC,ELISA
ENT2424	JAK1 Polyclonal Antibody	P23458	H,M,R	WB,IHC,ELISA
EAP2510	DNASE1 Polyclonal Antibody	P24855	H M R	WB IHC IF
ENT1676	FAS Polyclonal Antibody	P25445	H	WB,IF,ELISA
ENT0010	14-3-3 θ Polyclonal Antibody	P27348	H,M,R	WB,IHC,IF,ELISA
EAP3740	CAD Polyclonal Antibody	P27708	H	WB IHC
ENT0652	Caspase-1 Polyclonal Antibody	P29466	H,M,R	WB,IHC,ELISA
EAP0778	PRDX6 Polyclonal Antibody	P30041	H M R	WB IHC IF
EAP2637	PRDX5 Polyclonal Antibody	P30044	H M R	WB IHC IF
ESAP15205	PPIF Polyclonal Antibody	P30405	H,M,R	ELISA WB IHC
EAP2580	TIA1 Polyclonal Antibody	P31483	H M R	WB IHC IF
EAP1813	CASP14 Polyclonal Antibody	P31944	H	WB IHC IF

Apoptosis

Cat.No.	Product Name	Swissprot	Reactivity	Application
ESAP13132	SSTR3 Polyclonal Antibody	P32745	H	ELISA IHC
ESAP14572	PHB Polyclonal Antibody	P35232	H,M,R	ELISA WB IHC
EAP0433	TIMP3 Polyclonal Antibody	P35625	H M R	WB IHC IF
ENT2602	LTβR Polyclonal Antibody	P36941	H,M	WB,IF,ELISA
ESAP11620	NUP62 Polyclonal Antibody	P37198	H,M,R	ELISA WB IHC
EAP1595	ANP32A Polyclonal Antibody	P39687	H M R	WB IHC IF
ENT0721	CD130 Polyclonal Antibody	P40189	H,M	WB,IHC,IF,ELISA
EAP3280	Phospho-STAT5A-S780 Polyclonal Antibody	P42229	H M R	WB IHC
ESAP12072	STAT5A (Phospho-Tyr694) Polyclonal Antibody	P42229	H M R	WB IHC
ESAP12073	STAT5A (Phospho-Ser780) Polyclonal Antibody	P42229	H M R	WB IHC
ENP0613	Phospho-Stat5 (S726/731) Polyclonal Antibody	P42229/P51692	H,M,R	WB,IHC,ELISA
ENT4449	Stat5 Polyclonal Antibody	P42229/P51692	H,M,R	WB,IHC,ELISA
ENC004	Cleaved-Caspase-3 p12 (D175) Polyclonal Antibody	P42574	H	WB,IHC,ELISA
ENC006	Cleaved-Caspase-3 p17 (D175) Polyclonal Antibody	P42574	H,M,R	WB,IHC,ELISA
ENT0656	Caspase-3 Polyclonal Antibody	P42574	H,M,R	WB,IHC,IF,ELISA
ENC024	Cleaved-Caspase-2 p18 (G170) Polyclonal Antibody	P42575	H	WB,ELISA
ESAP14067	CASP2 Polyclonal Antibody	P42575	H,M,R	ELISA WB IHC
ENT1300	DCC Polyclonal Antibody	P43146	H,M,R	WB,IF,ELISA
EAP4075	BAG6 Polyclonal Antibody	P46379	H M R	WB
ENT4669	TIS11D Polyclonal Antibody	P47974	H,M	WB,IHC,ELISA
ENT1677	FAS-L Polyclonal Antibody	P48023	H,M	WB,IHC,IF,ELISA
ESAP11435	GLIPR1 Polyclonal Antibody	P48060	H,M	ELISA WB IHC
ESAP15196	CSNK1D Polyclonal Antibody	P48730	H,M,R	ELISA WB IHC
ESAP17093	PPM1F Polyclonal Antibody	P49593	H	ELISA WB IHC
ENC028	Cleaved-Caspase-4 p20 (Q81) Polyclonal Antibody	P49662	H	WB,IHC,ELISA

Apoptosis

Cat.No.	Product Name	Swissprot	Reactivity	Application
ENT2051	Granzyme K Polyclonal Antibody	P49863	H,M,R	WB,IHC,IF,ELISA
ENT4721	TRAIL Polyclonal Antibody	P50591	H	WB,IHC,IF,ELISA
EAP2552	DAP Polyclonal Antibody	P51397	H M R	WB IHC IF
EAP2101	DAP3 Polyclonal Antibody	P51398	H M R	WB
ESAP15095	BLK Polyclonal Antibody	P51451	H,M	ELISA WB IHC
ESAP15082	BCAP31 Polyclonal Antibody	P51572	H,M	ELISA WB IHC
ENC030	Cleaved-Caspase-5 p10 (S331) Polyclonal Antibody	P51878	H	WB,ELISA
ENC031	Cleaved-Caspase-5 p20 (D121) Polyclonal Antibody	P51878	H	WB,ELISA
ENT1287	DAPK1 Polyclonal Antibody	P53355	H,M	IHC,IF,ELISA
ESAP15089	COPB1 Polyclonal Antibody	P53618	H,M,R	ELISA WB IHC
ESAP11089	AK2 Polyclonal Antibody	P54819	H,M,R	ELISA WB IHC
ENT0641	CAS Polyclonal Antibody	P55060	H	WB,IHC,IP,IF,ELISA
ENC009	Cleaved-Caspase-7 p20 (D198) Polyclonal Antibody	P55210	H,M	WB,IHC,ELISA
ENC010	Cleaved-Caspase-7 (S199) Polyclonal Antibody	P55210	H,M	WB,IHC,ELISA
ENT0659	Caspase-7 Polyclonal Antibody	P55210	H	WB,IHC,ELISA
ENC012	Cleaved-Caspase-9 (D353) Polyclonal Antibody	P55211	M,R	WB,IHC,ELISA
ENC014	Cleaved-Caspase-9 p35 (D315) Polyclonal Antibody	P55211	H	WB,IHC,IF,ELISA
ENM0077	Caspase 9 Monoclonal Antibody	P55211	H, M, R	WB, IP
ENP0345	Phospho-Caspase-9 (S196) Polyclonal Antibody	P55211	H	WB,IHC,ELISA
ENP0598	Phospho-Caspase-9 (T125) Polyclonal Antibody	P55211	H,M,R	WB,IHC,ELISA
ENT0664	Caspase-9 Polyclonal Antibody	P55211	H	WB,IHC,IF,ELISA
ENC007	Cleaved-Caspase-6 p18 (D162) Polyclonal Antibody	P55212	M,R	WB,IHC,ELISA
ENC008	Cleaved-Caspase-6 p18 (D179) Polyclonal Antibody	P55212	H,R	WB,IHC,ELISA
ENP0044	Phospho-Caspase-6 (S257) Polyclonal Antibody	P55212	H,M,R	WB,IHC,IF,ELISA
ENT0658	Caspase-6 Polyclonal Antibody	P55212	H,M,R	WB,IHC,IF,ELISA

Apoptosis

Cat.No.	Product Name	Swissprot	Reactivity	Application
ENT0488	BID Polyclonal Antibody	P55957	H,M	WB,IHC,ELISA
ESAP10630	NME5 Polyclonal Antibody	P56597	H,M	ELISA IHC
ESAP16961	PCBP4 Polyclonal Antibody	P57723	H,M	ELISA WB
ESAP13689	NLRP6 Polyclonal Antibody	P59044	H	ELISA IHC
ESAP13687	NLRP12 Polyclonal Antibody	P59046	H,M	ELISA IHC
ENT4139	Ribosomal Protein S6 Polyclonal Antibody	P62753	H,M,R	WB,IHC,IF,ELISA
ESAP12161	RPS6 (Phospho-Ser235) Polyclonal Antibody	P62753	H M R	WB IF
ESAP12230	RPS6 (Phospho-Ser235/236) Polyclonal Antibody	P62753	H M R	WB
ENP0853	Phospho-14-3-3 ζ (S58) Polyclonal Antibody	P63104	H,M,R	WB,IHC,IF,ELISA
ENT0007	14-3-3 ζ Polyclonal Antibody	P63104	H,M,R	WB,IHC,IP,IF,ELISA
ESAP11325	DYNLL1 Polyclonal Antibody	P63167	H,M,R	ELISA WB IHC
ENP0391	Phospho-Casein Kinase II α (Y255) Polyclonal Antibody	P68400	H,M,R	WB,IHC,ELISA
ENT0643	Casein Kinase II α Polyclonal Antibody	P68400	H,M,R	WB,IHC,ELISA
ENT1286	DAP-5 Polyclonal Antibody	P78344	H,M	WB,IHC,IF,ELISA
ENT1385	DNA-PKCS Polyclonal Antibody	P78527	H,M	WB,IHC,IF,ELISA
ESAP15629	CRADD Polyclonal Antibody	P78560	H,M	ELISA IHC
EAP0829	LCN2 Polyclonal Antibody	P80188	H M R	WB IHC IF
ENP0681	Phospho-XIAP (S87) Polyclonal Antibody	P98170	H,M,R	WB,IHC,ELISA
ENT4913	XIAP Polyclonal Antibody	P98170	H,M,R	WB,IHC,ELISA
ENT1186	CYCS Polyclonal Antibody	P99999	H,M,R,Mk	WB,IHC,ELISA
ENT3093	NF κ B-p100 Polyclonal Antibody	Q00653	H,M,R	WB,IHC,IP,IF,ELISA
ESAP15529	NGFRAP1 Polyclonal Antibody	Q00994	H,M,R	ELISA IHC
ESAP12174	RELB (Phospho-Ser573) Polyclonal Antibody	Q01201	H M	WB IHC
ESAP13812	RELB Polyclonal Antibody	Q01201	H,M	ELISA WB
EAP1504	FLI1 Polyclonal Antibody	Q01543	H M R	WB IHC IF

Apoptosis

Cat.No.	Product Name	Swissprot	Reactivity	Application
EAP2513	ID3 Polyclonal Antibody	Q02535	H M R	WB IHC IF
EAP2750	LMNB2 Polyclonal Antibody	Q03252	H M R	WB IHC IF
EAP1020	RELA Polyclonal Antibody	Q04206	H M R	WB IHC IF
ENH006	Mono-Methyl-NFκB-p65 (K314/K315) Polyclonal Antibody	Q04206	H, M, R	WB,ELISA
ENK018	Acetyl-NFκB-p65 (K310) Polyclonal Antibody	Q04206	H,M	WB,IHC,IF,ELISA
ENK034	Acetyl-NFκB-p65 (K218) Polyclonal Antibody	Q04206	H, M, R	WB,ELISA
ENK064	Acetyl-NFκB-p65 (K122) Polyclonal Antibody	Q04206	H, M, R	WB ELISA
ENK065	Acetyl-NFκB-p65 (K221) Polyclonal Antibody	Q04206	H, M, R	WB ELISA
ENM0053	NFκB p65 Monoclonal Antibody	Q04206	H, M, R	WB, IHC, IP
ENP0187	Phospho-NFκB-p65 (S276) Polyclonal Antibody	Q04206	H,M,R	WB,IHC,IP,ELISA
ENP0188	Phospho-NFκB-p65 (S468) Polyclonal Antibody	Q04206	H,M,R	WB,IHC,IP,ELISA
ENP0190	Phospho-NFκB-p65 (S529) Polyclonal Antibody	Q04206	H,M	WB,IHC,ELISA
ENP0191	Phospho-NFκB-p65 (S536) Polyclonal Antibody	Q04206	H,M,R,Mk	WB,IHC,IP,ELISA
ENP0192	Phospho-NFκB-p65 (T254) Polyclonal Antibody	Q04206	H,M,R	WB,IHC,IP,ELISA
ENP0847	Phospho-NFκB-p65 (S311) Polyclonal Antibody	Q04206	H,M	WB,IHC,IF,ELISA
ENT3103	NFκB-p65 Polyclonal Antibody	Q04206	H,M,R	WB,IHC,ELISA
ENK050	Acetyl-NFκB-p65 (K314/K315) Polyclonal Antibody	Q04206	H, M, R	WB,ELISA
ESAP16761	DUSP2 Polyclonal Antibody	Q05923	H,M	ELISA WB IHC
ENT0722	CD137 Polyclonal Antibody	Q07011	H	WB,IF,ELISA
ENT0456	Bax Polyclonal Antibody	Q07812	H,M,R	WB,IHC,IF,ELISA
EGM0364	BCL2L1 Polyclonal Antibody	Q07817	H,R,M	WB,IHC
ENT2679	Mcl-1 Polyclonal Antibody	Q07820	H,M,R	WB,IHC,ELISA
ESAP12744	LRP1 Polyclonal Antibody	Q07954	H	ELISA WB IHC
EAP1296	AIMP1 Polyclonal Antibody	Q12904	H M R	WB IHC IF
EAP1093	TRAP1 Polyclonal Antibody	Q12931	H M R	WB IHC IF

Apoptosis

Cat.No.	Product Name	Swissprot	Reactivity	Application
EAP0146	TRAF2 Polyclonal Antibody	Q12933	H M R	WB IHC IF
ESAP10214	BNIP1 Polyclonal Antibody	Q12981	H,M,R	ELISA WB IHC
EAP2603	BNIP2 Polyclonal Antibody	Q12982	H M	WB IHC IF
ESAP15022	BNIP3 Polyclonal Antibody	Q12983	H,M	ELISA WB IHC
ESAP13686	NAIP Polyclonal Antibody	Q13075	H	ELISA IHC
ENP0666	Phospho-PAK α (T212) Polyclonal Antibody	Q13153	H,M,R	WB,IHC,ELISA
ENP0794	Phospho-PAK α (S204) Polyclonal Antibody	Q13153	H,M,R	WB,IHC,ELISA
ENT3576	PAK α Polyclonal Antibody	Q13153	H,M,R	WB,IHC,IF,ELISA
ENT3578	PAK α / β / γ Polyclonal Antibody	Q13153/Q13177/ O75914	H,M,R	WB,IHC,ELISA
EAP1630	FADD Polyclonal Antibody	Q13158	H M R	WB IHC
ENP0838	Phospho-FADD (S191) Polyclonal Antibody	Q13158	M	WB,IHC,ELISA
ENP0700	Phospho-PAK γ (S20) Polyclonal Antibody	Q13177	H,M,R	WB,IHC,ELISA
ENT3581	PAK γ Polyclonal Antibody	Q13177	H,M,R	WB,IHC,ELISA
EAP2092	STK3 Polyclonal Antibody	Q13188	H M R	WB IHC IF
ENP0695	Phospho-Krs-1/2 (T183) Polyclonal Antibody	Q13188/Q13043	H,M	WB,IHC,ELISA
ESAP16047	IL15RA Polyclonal Antibody	Q13261	H,M	ELISA IHC
ENT2983	NBK Polyclonal Antibody	Q13323	H	WB,IHC,IF,ELISA
ENP0118	Phospho-Gab 1 (Y627) Polyclonal Antibody	Q13480	H,M,Mk	WB,ELISA
ENP0907	Phospho-Gab 1 (Y659) Polyclonal Antibody	Q13480	H,M,R	WB,IHC,IF,ELISA
ESAP11005	GAB1 Polyclonal Antibody	Q13480	H,M	ELISA IHC
EAP0167	BIRC2 Polyclonal Antibody	Q13490	H M R	WB IHC IF
ESAP11330	DNASE1L3 Polyclonal Antibody	Q13609	H,M,R	ELISA WB
ENT1157	CUL-1 Polyclonal Antibody	Q13616	H,M	WB,IHC,IF,ELISA
ENT1158	CUL-2 Polyclonal Antibody	Q13617	H,M	WB,IHC,IF,ELISA
ESAP10392	CUL3 Polyclonal Antibody	Q13618	H,M,R	ELISA WB IHC

Apoptosis

Cat.No.	Product Name	Swissprot	Reactivity	Application
ESAP12723	KLF5 Polyclonal Antibody	Q13887	H,M	ELISA WB IHC
EAP4160	C1D Polyclonal Antibody	Q13901	H M R	IHC IF
ESAP11490	IKBKE Polyclonal Antibody	Q14164	H,M	ELISA WB IHC
ESAP13449	DOCK1 Polyclonal Antibody	Q14185	H,M	ELISA IHC
ENT1407	DP-2 Polyclonal Antibody	Q14188	H,M,R,Mk	WB,ELISA
ESAP14278	CRMP1 Polyclonal Antibody	Q14194	H,M,R	ELISA WB IHC
ESAP16769	ENDO G Polyclonal Antibody	Q14249	H	ELISA IHC
ESAP15342	FKBP8 Polyclonal Antibody	Q14318	H,M,R	ELISA WB IHC
EAP0999	NEDD9 Polyclonal Antibody	Q14511	H M R	WB IHC IF
ESAP15421	ICAM4 Polyclonal Antibody	Q14773	H	ELISA WB IHC
ENP0403	Phospho-Caspase-8 (Y380) Polyclonal Antibody	Q14790	H	WB,ELISA
ENC011	Cleaved-Caspase-8 (D384) Polyclonal Antibody	Q14790	H	WB,ELISA
ENT0660	Caspase-8 Polyclonal Antibody	Q14790	H,M,R	WB,IHC,ELISA
ESAP14916	ARL6IP1 Polyclonal Antibody	Q15041	H,M	ELISA IHC
ESAP13076	PDCD1 Polyclonal Antibody	Q15116	H	ELISA IHC
EAP3344	PEA15 Polyclonal Antibody	Q15121	H M	WB
EAP0275	RALBP1 Polyclonal Antibody	Q15311	H M R	WB
ESAP11579	MTRF1 Polyclonal Antibody	Q15390	H	ELISA WB IHC
ESAP15682	DHCR24 Polyclonal Antibody	Q15392	H,M,R	ELISA IHC
ENT4716	TRADD Polyclonal Antibody	Q15628	H,M,Mk	WB,IHC,ELISA
ESAP13074	PDCD2 Polyclonal Antibody	Q16342	H,M,R	ELISA IHC
ESAP14120	BCL2A1 Polyclonal Antibody	Q16548	H,M	ELISA WB IHC
ENT0449	Bak Polyclonal Antibody	Q16611	H,M	WB,IHC,IF,ELISA
EAP0763	IFI16 Polyclonal Antibody	Q16666	H M	WB IHC IF
ESAP14003	TPD52L1 Polyclonal Antibody	Q16890	H	ELISA WB

Apoptosis

Cat.No.	Product Name	Swissprot	Reactivity	Application
ESAP13795	PUS10 Polyclonal Antibody	Q3MIT2	H,M	ELISA WB IHC
ESAP16633	ANXA2R Polyclonal Antibody	Q3ZCQ2	H	ELISA IHC
ENT0873	CERKL Polyclonal Antibody	Q49MI3	H	WB,IHC,ELISA
ENT3723	PIG3 Polyclonal Antibody	Q53FA7	H	WB,IHC,ELISA
ESAP15319	FASTKD1 Polyclonal Antibody	Q53R41	H	ELISA IHC
ESAP15493	ZC3H12A Polyclonal Antibody	Q5D1E8	H	ELISA WB IHC
ESAP10212	BCL2L15 Polyclonal Antibody	Q5TBC7	H	ELISA WB IHC
ESAP16662	CARD17 Polyclonal Antibody	Q5XLA6	H	ELISA IHC
ESAP12077	Bad (Phospho-Ser112) Polyclonal Antibody	Q61337	H M R	WB IHC
ESAP12078	Bad (Phospho-Ser136) Polyclonal Antibody	Q61337	M	WB IHC
ESAP15172	CIAPIN1 Polyclonal Antibody	Q6F181	H	ELISA WB IHC
ESAP15448	JMJD6 Polyclonal Antibody	Q6NYC1	H,M,R	ELISA WB IHC
ESAP12895	TRAF7 Polyclonal Antibody	Q6Q0C0	H	ELISA WB IHC
ENT0654	Caspase12 Polyclonal Antibody	Q6UXS9	H	WB,IHC,ELISA
ESAP15652	DSTYK Polyclonal Antibody	Q6XUX3	H,M,R	ELISA WB IHC
ESAP13702	AATK Polyclonal Antibody	Q6ZMQ8	H,M	ELISA IHC
ENT4013	RASSF6 Polyclonal Antibody	Q6ZTQ3	H	WB,ELISA
ESAP11491	IKBIP Polyclonal Antibody	Q70UQ0	H,M,R	ELISA IHC
ENT4133	Ribosomal Protein S27L Polyclonal Antibody	Q71UM5	H,M	WB,IHC,ELISA
ESAP16777	ERN2 Polyclonal Antibody	Q76MJ5	H	ELISA IHC
ESAP15320	FASTKD5 Polyclonal Antibody	Q7L8L6	H	ELISA IHC
ESAP13711	NLRP9 Polyclonal Antibody	Q7RTR0	H	ELISA IHC
ESAP15419	RNF144B Polyclonal Antibody	Q7Z419	H,M	ELISA WB IHC
EAP2073	RBBP6 Polyclonal Antibody	Q7Z6E9	H M	WB IHC IF
ESAP14676	SYVN1 Polyclonal Antibody	Q86TM6	H,M	ELISA WB IHC

Apoptosis

Cat.No.	Product Name	Swissprot	Reactivity	Application
ESAP17012	NLRP10 Polyclonal Antibody	Q86W26	H	ELISA IHC
ESAP15662	TRIM69 Polyclonal Antibody	Q86WT6	H,M,R	ELISA IHC
ESAP11611	NIT1 Polyclonal Antibody	Q86X76	H,M,R	ELISA WB IHC
EAP2459	CAMK1D Polyclonal Antibody	Q8IU85	H M R	WB IHC IF
EAP3538	ANKHD1 Polyclonal Antibody	Q8IWZ3	H M R	WB
EAP2641	CCAR1 Polyclonal Antibody	Q8IX12	H M R	WB IHC IF
ENT2863	MRP-L41 Polyclonal Antibody	Q8IXM3	H,M,R	WB,IHC,ELISA
ENT5564	NOXIN Polyclonal Antibody	Q8IXT1	H	WB ELISA
EAP3285	SUPV3L1 Polyclonal Antibody	Q8IYB8	H M	WB
ESAP16835	GPR65 Polyclonal Antibody	Q8IYL9	H	ELISA IHC
EAP2278	BLID Polyclonal Antibody	Q8IZY5	H	WB IHC IF
ESAP11661	TMEM123 Polyclonal Antibody	Q8N131	H	ELISA IHC
ESAP15729	ARMC10 Polyclonal Antibody	Q8N2F6	H	ELISA IHC
ESAP13073	PDCD7 Polyclonal Antibody	Q8N8D1	H,M	ELISA IHC
ENT2438	JMY Polyclonal Antibody	Q8N9B5	H,M	WB,ELISA
EAP2316	TXNDC5 Polyclonal Antibody	Q8NBS9	H	WB IHC IF
ENT2137	HIPK4 Polyclonal Antibody	Q8NE63	H,M,R	WB,IHC,IF,ELISA
ENT4965	ZNF420 Polyclonal Antibody	Q8TAQ5	H,M	WB,ELISA
ENT3807	PNPase Polyclonal Antibody	Q8TCS8	H,M	WB,IHC,ELISA
ESAP15041	CERK Polyclonal Antibody	Q8TCT0	H,M	ELISA IHC
ESAP16831	HCAR2 Polyclonal Antibody	Q8TDS4	H,M,R	ELISA IHC
ESAP12710	PPP1R13L Polyclonal Antibody	Q8WUF5	H,M	ELISA WB IHC
EAP3393	ALIX Polyclonal Antibody	Q8WUM4	H M R	WB
ENT4590	TDAG51 Polyclonal Antibody	Q8WV24	H,M,R	WB,ELISA
EAP2362	RASSF5 Polyclonal Antibody	Q8WWW0	H M R	WB

Apoptosis

Cat.No.	Product Name	Swissprot	Reactivity	Application
ESAP16617	NLRP7 Polyclonal Antibody	Q8WX94	H	ELISA IHC
EAP1834	CTNNBL1 Polyclonal Antibody	Q8WYA6	H M R	WB IHC IF
ESAP15642	RFFL Polyclonal Antibody	Q8WZ73	H,M,R	ELISA IHC
ENT5030	Elmo1 Polyclonal Antibody	Q92556	H,M	WB,ELISA
EPM12147	ANP32B Monoclonal Antibody	Q92688	H;	ELISA,WB,IF
ENT4177	RRP22 Polyclonal Antibody	Q92737	H,M	WB,ELISA
ENT1408	DPF2 Polyclonal Antibody	Q92785	H,M	WB,IHC,IF,ELISA
ENT0476	Bcl-w Polyclonal Antibody	Q92843	H,M,R	WB,IHC,IF,ELISA
ENT5094	Caspase-10 Polyclonal Antibody	Q92851	H	WB,ELISA
ENT0653	Caspase-10 B/C Polyclonal Antibody	Q92851-2/4	H	WB,IHC,IF,ELISA
ENT5135	DR3 Polyclonal Antibody	Q93038	H	WB,ELISA
ENT4705	TP53INP1 Polyclonal Antibody	Q96A56	H	WB,IHC,ELISA
ESAP15173	CIDEC Polyclonal Antibody	Q96AQ7	H,M,R	ELISA WB IHC
EAP2226	ELMO3 Polyclonal Antibody	Q96BJ8	H M R	WB IHC
ESAP14457	BIRC7 Polyclonal Antibody	Q96CA5	H	ELISA WB IHC
EAP2190	EAF2 Polyclonal Antibody	Q96CJ1	H M R	WB IHC IF
ENT4302	SIRT1 Polyclonal Antibody	Q96EB6	H,M	WB,IHC,ELISA
EAP2120	DNAJA3 Polyclonal Antibody	Q96EY1	H M R	WB IHC IF
ESAP11281	CYFIP2 Polyclonal Antibody	Q96F07	H,M	ELISA WB IHC
EAP2177	APIP Polyclonal Antibody	Q96GX9	H M R	WB
EAP1194	PAWR Polyclonal Antibody	Q96IZ0	H M R	WB IHC
ENT2238	HSF-27 Polyclonal Antibody	Q96JB5	H,M,R	WB,IHC,ELISA
ESAP16710	CLPTM1L Polyclonal Antibody	Q96KA5	H	ELISA IHC
ESAP13688	NLRP4 Polyclonal Antibody	Q96MN2	H	ELISA IHC
ENT0148	AIFL Polyclonal Antibody	Q96NN9	H,M	WB,IHC,IF,ELISA

Apoptosis

Cat.No.	Product Name	Swissprot	Reactivity	Application
ESAP16727	NLRP3 Polyclonal Antibody	Q96P20	H,M,R	ELISA IHC
ENT3176	Nox5 Polyclonal Antibody	Q96PH1	H	WB,IHC,ELISA
EAP3674	IL4I1 Polyclonal Antibody	Q96RQ9	H M R	WB
ESAP14518	MAP3K14 Polyclonal Antibody	Q99558	H,M	ELISA WB IHC
EAP1984	TSC22D3 Polyclonal Antibody	Q99576	H M	WB IHC IF
EAP3153	Phospho-MAP3K5-S1033 Polyclonal Antibody	Q99683	H M R	WB
EAP3154	Phospho-MAP3K5-T918 Polyclonal Antibody	Q99683	H M R	WB
ENP0021	Phospho-ASK 1 (S83) Polyclonal Antibody	Q99683	H	WB,IHC,ELISA
ENP0022	Phospho-ASK 1 (S966) Polyclonal Antibody	Q99683	H,M,R	WB,IHC,ELISA
ENT0370	ASK 1 Polyclonal Antibody	Q99683	H,M,R	WB,IHC,ELISA
ESAP14112	BAG1 Polyclonal Antibody	Q99933	H	ELISA WB IHC
ESAP14658	SPIN2B Polyclonal Antibody	Q9BPZ2	H	ELISA WB IHC
EAP2366	PDCD2L Polyclonal Antibody	Q9BRP1	H	WB IHC
ENT0210	AMID Polyclonal Antibody	Q9BRQ8	H,M,Mk	WB,IHC,IF,ELISA
ESAP13489	FEM1A Polyclonal Antibody	Q9BSK4	H	ELISA IHC
ENT1351	Dio-1 Polyclonal Antibody	Q9BTC0	H,M	WB,IHC,ELISA
ESAP16921	ANP32E Polyclonal Antibody	Q9BTT0	H,M,R	ELISA WB IHC
ESAP16652	CABLES2 Polyclonal Antibody	Q9BTV7	H,M	ELISA IHC
ESAP10672	PDCD10 Polyclonal Antibody	Q9BUL8	H,M,R	ELISA WB IHC
EAP2135	TRAF4 Polyclonal Antibody	Q9BUZ4	H M R	WB IHC IF
ESAP15309	FAIM2 Polyclonal Antibody	Q9BWQ8	H,M,R	ELISA WB IHC
ENT0634	CARD 10 Polyclonal Antibody	Q9BWT7	H,M	WB,IHC,IF,ELISA
ESAP13385	CDK19 Polyclonal Antibody	Q9BWU1	H,M	ELISA WB IHC
ESAP16624	APOL6 Polyclonal Antibody	Q9BWW8	H	ELISA IHC
ENT0637	CARD 6 Polyclonal Antibody	Q9BX69	H	WB,IHC,IF,ELISA

Apoptosis

Cat.No.	Product Name	Swissprot	Reactivity	Application
ESAP12472	BBC3 Polyclonal Antibody	Q9BXH1	H	ELISA WB IHC
ESAP14119	BCL2L13 Polyclonal Antibody	Q9BXK5	H,M	ELISA WB
ENT0635	CARD 11 Polyclonal Antibody	Q9BXL7	H,M	WB,IHC,IF,ELISA
EAP2748	BCL2L14 Polyclonal Antibody	Q9BZR8	H	WB IHC IF
ENT0264	API5 Polyclonal Antibody	Q9BZZ5	H,M	WB,IHC,ELISA
ENT3659	PEG3 Polyclonal Antibody	Q9GZU2	H	WB,ELISA
ESAP16966	MFF Polyclonal Antibody	Q9GZY8	H,M,R	ELISA WB IHC
ESAP10976	ATG5 Polyclonal Antibody	Q9H1Y0	H,M,R	ELISA WB IHC
ESAP11196	CARD9 Polyclonal Antibody	Q9H257	H	ELISA IHC
ENT4320	SLK Polyclonal Antibody	Q9H2G2	H,M,R	WB,IHC,IF,ELISA
ESAP15634	RASSF4 Polyclonal Antibody	Q9H2L5	H,M,R	ELISA IHC
ENT0137	ADNP Polyclonal Antibody	Q9H2P0	H,M	WB,IHC,ELISA
ESAP11640	PARL Polyclonal Antibody	Q9H300	H,M,R	ELISA IHC
EAP0874	TP63 Polyclonal Antibody	Q9H3D4	H M R	WB IHC IF
ENP0699	Phospho-p63 (S455) Polyclonal Antibody	Q9H3D4	H	WB,IHC,ELISA
ESAP15508	GHITM Polyclonal Antibody	Q9H3K2	H,M,R	ELISA IHC
ESAP13821	RNF122 Polyclonal Antibody	Q9H9V4	H,M	ELISA WB
ESAP15580	ZMAT3 Polyclonal Antibody	Q9HA38	H,M,R	ELISA IHC
ESAP11343	EDA2R Polyclonal Antibody	Q9HAV5	H	ELISA WB IHC
ESAP10213	BCL2L12 Polyclonal Antibody	Q9HB09	H	ELISA IHC
ESAP15478	PIDD1 Polyclonal Antibody	Q9HB75	H	ELISA IHC
ENT3992	Rag C Polyclonal Antibody	Q9HB90	H,M,R	WB,ELISA
ESAP13357	NOD2 Polyclonal Antibody	Q9HC29	H	ELISA IHC
ESAP17042	TP53AIP1 Polyclonal Antibody	Q9HCN2	H	ELISA IHC
ESAP10410	TNFRSF12A Polyclonal Antibody	Q9NP84	H,M	ELISA WB IHC

Apoptosis

Cat.No.	Product Name	Swissprot	Reactivity	Application
EAP2359	NLRC4 Polyclonal Antibody	Q9NPP4	H M R	WB IHC IF
ESAP16462	C12orf5 Polyclonal Antibody	Q9NQ88	H	ELISA IHC
ENT0422	Aven Polyclonal Antibody	Q9NQS1	H,Mk	WB,IHC,IF,ELISA
EAP3574	PAK6 Polyclonal Antibody	Q9NQU5	H M R	WB IHC
ESAP15815	BIRC6 Polyclonal Antibody	Q9NR09	H,M	ELISA IHC
ESAP10746	DIABLO Polyclonal Antibody	Q9NR28	H,M	ELISA WB IHC
ESAP15044	SPHK2 Polyclonal Antibody	Q9NRA0	H,M	ELISA WB IHC
EAP2284	DUSP22 Polyclonal Antibody	Q9NRW4	H	WB IHC IF
ESAP16180	RASSF1 Polyclonal Antibody	Q9NS23	H,M	ELISA WB IHC
ESAP13481	FAIM Polyclonal Antibody	Q9NVQ4	H,M,R	ELISA WB IHC
EAP2420	THAP1 Polyclonal Antibody	Q9NVV9	H M R	WB IHC IF
ESAP17220	SLTM Polyclonal Antibody	Q9NWH9	H,M	ELISA IHC
EAP3560	NLRP2 Polyclonal Antibody	Q9NX02	H M	WB
ESAP11172	BRE Polyclonal Antibody	Q9NXR7	H,M,R	ELISA WB IHC
ENT0894	Che-1 Polyclonal Antibody	Q9NY61	H,M,R	WB,IHC,ELISA
ENT0542	BTF Polyclonal Antibody	Q9NYF8	H,M,R	WB,ELISA
ENT4714	TRAAK Polyclonal Antibody	Q9NYG8	H,M	WB,ELISA
ESAP15321	FASTKD2 Polyclonal Antibody	Q9NYY8	H	ELISA WB IHC
EAP3471	MTCH1 Polyclonal Antibody	Q9NZJ7	H M R	WB
EAP3518	BFAR Polyclonal Antibody	Q9NZS9	H M R	WB
ESAP11450	NDUFA13 Polyclonal Antibody	Q9P0J0	H,M	ELISA WB IHC
ESAP13676	MST4 Polyclonal Antibody	Q9P289	H,M	ELISA WB
ESAP15654	RNF7 Polyclonal Antibody	Q9UBF6	H,M	ELISA WB IHC
ESAP11307	TNFRSF10D Polyclonal Antibody	Q9UBN6	H	ELISA IHC
ESAP15593	PEF1 Polyclonal Antibody	Q9UBV8	H,M,R	ELISA WB IHC

Apoptosis

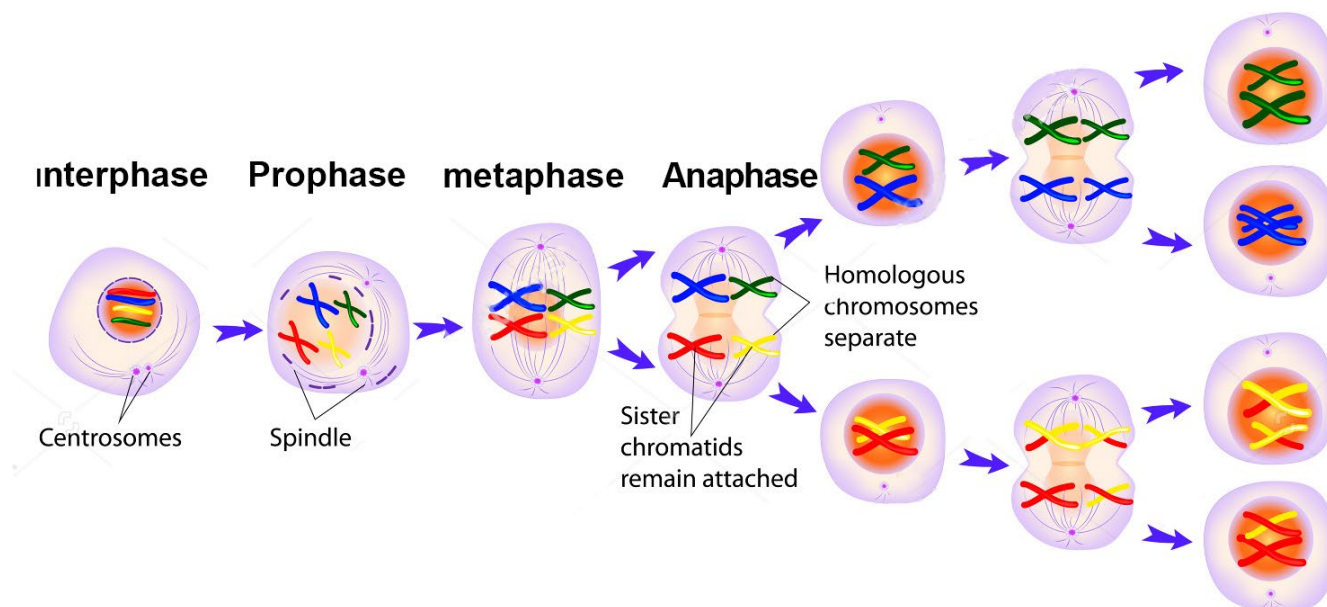
Cat.No.	Product Name	Swissprot	Reactivity	Application
EAP4241	COPS7A Polyclonal Antibody	Q9UBW8	H M R	WB
ESAP11580	MTFP1 Polyclonal Antibody	Q9UDX5	H,M	ELISA WB IHC
ENT2630	MALT1 Polyclonal Antibody	Q9UDY8	H,M	WB,IHC,IF,ELISA
ESAP13451	STK17A Polyclonal Antibody	Q9UEE5	H	ELISA WB IHC
ENP0625	Phospho-Daxx (S668) Polyclonal Antibody	Q9UER7	H	WB,IHC,ELISA
ENT1292	Daxx Polyclonal Antibody	Q9UER7	H,M,R	WB,IHC,IF,ELISA
ENT0928	CIDE-B Polyclonal Antibody	Q9UHD4	H,M	WB,IHC,IF,ELISA
EAP3124	ING1 Polyclonal Antibody	Q9UK53	H M R	WB
ESAP13488	FEM1B Polyclonal Antibody	Q9UK73	H,M,R	ELISA WB IHC
ESAP10293	APPL1 Polyclonal Antibody	Q9UKG1	H,M	ELISA WB IHC
ESAP17046	PARP4 Polyclonal Antibody	Q9UKK3	H	ELISA IHC
ESAP13494	CASP8AP2 Polyclonal Antibody	Q9UKL3	H,M	ELISA WB IHC
ESAP12401	ACIN1 Polyclonal Antibody	Q9UKV3	H,M	ELISA WB IHC
ESAP11623	NUP50 Polyclonal Antibody	Q9UKX7	H	ELISA WB IHC
ENT5061	BAGE5 Polyclonal Antibody	Q9UL15	H,M,R	WB,ELISA
ESAP11261	CORO1C Polyclonal Antibody	Q9ULV4	H,M	ELISA WB IHC
ENT0365	ASC Polyclonal Antibody	Q9ULZ3	H,M,R	WB,IHC,IF,ELISA
ESAP15939	FAF1 Polyclonal Antibody	Q9UNN5	H,M,R	ELISA WB IHC
ESAP13445	DICER1 Polyclonal Antibody	Q9UPY3	H,M	ELISA IHC
ESAP16691	CDK11A/CDK11B Polyclonal Antibody	Q9UQ88/P21127	H,M	ELISA IHC
ESAP16663	NOD1 Polyclonal Antibody	Q9Y239	H,M	ELISA IHC
ESAP10301	TNFSF13B Polyclonal Antibody	Q9Y275	H	ELISA WB IHC
ESAP16995	NCKAP1 Polyclonal Antibody	Q9Y2A7	H,M,R	ELISA IHC
EAP0092	CARD8 Polyclonal Antibody	Q9Y2G2	H M R	WB
EAP3513	SH3GLB1 Polyclonal Antibody	Q9Y371	H M R	IHC IF

Apoptosis

Cat.No.	Product Name	Swissprot	Reactivity	Application
EAP1632	FIS1 Polyclonal Antibody	Q9Y3D6	H M R	WB IHC IF
EAP2739	PTRH2 Polyclonal Antibody	Q9Y3E5	H M R	WB IHC IF
ESAP15559	NOC2L Polyclonal Antibody	Q9Y3T9	H,M	ELISA WB IHC
ENT4720	TRAF6 Polyclonal Antibody	Q9Y4K3	H,M,R	WB,IHC,ELISA
ESAP14472	MAGED1 Polyclonal Antibody	Q9Y5V3	H,M,R	ELISA WB IHC
ENT4385	Spindlin-1 Polyclonal Antibody	Q9Y657	H,M,R	WB,IHC,IF,ELISA
ENT0965	CLIC4 Polyclonal Antibody	Q9Y696	H,M,R	WB,IHC,ELISA
ENT1502	EID-1 Polyclonal Antibody	Q9Y6B2	H	WB,IHC,IF,ELISA
ESAP15518	MTCH2 Polyclonal Antibody	Q9Y6C9	H,M	ELISA WB IHC
EAP2300	PARP3 Polyclonal Antibody	Q9Y6F1	H	IHC IF
ENP0638	Phospho-IKK γ (S31) Polyclonal Antibody	Q9Y6K9	H	WB,IHC,ELISA
ENT2305	IKK γ Polyclonal Antibody	Q9Y6K9	H,Mk	WB,IHC,IF,ELISA

Cancer Research

CELL DIVISION (MEIOSIS)



Cat.No.	Product Name	Swissprot	Reactivity	Application
ESAP16694	CDC7 Polyclonal Antibody	O00311	H,M	ELISA IHC
ESAP11313	DCTN6 Polyclonal Antibody	O00399	H,M	ELISA WB IHC
EAP0624	BIN1 Polyclonal Antibody	O00499	H M R	WB IHC IF
ESAP11610	PITPNM1 Polyclonal Antibody	O00562	H,M,R	ELISA IHC
ESAP16575	GAPDHS Polyclonal Antibody	O14556	H	ELISA WB
ENT2121	Hec1 Polyclonal Antibody	O14777	H,M	WB,IF,ELISA
ENT0326	ARK-1 Polyclonal Antibody	O14965	H,M,R,Mk	WB,IHC,IF,ELISA
ENT1834	GAK Polyclonal Antibody	O14976	H,M	WB,IHC,IF,ELISA
ESAP16269	ANKRD28 Polyclonal Antibody	O15084	H,M	ELISA WB
ESAP12977	MAPK13 Polyclonal Antibody	O15264	H,M,R	ELISA WB IHC
ENK038	Acetyl-p73 (K327) Polyclonal Antibody	O15350	H, M, R	WB,ELISA
ENP0218	Phospho-p73 (Y99) Polyclonal Antibody	O15350	H,M	WB,IHC,ELISA
ENT5344	p73 Polyclonal Antibody	O15350	H, M, R	WB,ELISA

Embryonic stem cells

Cat.No.	Product Name	Swissprot	Reactivity	Application
ESAP17300	TPD52L2 Polyclonal Antibody	O43399	H,M	ELISA WB IHC
ENT4032	RCL Polyclonal Antibody	O43598	H	WB,ELISA
ESAP16135	NCK2 Polyclonal Antibody	O43639	H,M	ELISA WB IHC
EAP2119	PRC1 Polyclonal Antibody	O43663	H	WB IHC
ESAP15106	BUB1 Polyclonal Antibody	O43683	H	ELISA IHC
EAP1809	BUB3 Polyclonal Antibody	O43684	H M R	WB IHC IF
ENT0168	AKAP 95 Polyclonal Antibody	O43823	H,M,R	WB,IHC,IF,ELISA
ESAP15358	MCM3AP Polyclonal Antibody	O60318	H	ELISA WB IHC
ESAP15229	BRINP1 Polyclonal Antibody	O60477	H,M,R	ELISA IHC
ESAP15898	CCNT1 Polyclonal Antibody	O60563	H,M	ELISA IHC
EAP0612	BUB1B Polyclonal Antibody	O60566	H M R	WB IHC
ENP0155	Phospho-JAK2 (Y1007) Polyclonal Antibody	O60674	H,M,R	IHC,ELISA
ENP0306	Phospho-JAK2 (Y570) Polyclonal Antibody	O60674	H,M,R	WB,IHC,ELISA
ENT2429	JAK2 Polyclonal Antibody	O60674	H,M,R	WB,IHC,IF,ELISA
ESAP16172	PRMT3 Polyclonal Antibody	O60678	H	ELISA IHC
ESAP11531	TRIM13 Polyclonal Antibody	O60858	H,M,R	ELISA IHC
ESAP10473	GAS7 Polyclonal Antibody	O60861	H,M,R	ELISA WB IHC
ESAP13916	SLIT3 Polyclonal Antibody	O75094	H,M,R	ELISA IHC
ESAP16745	DEAF1 Polyclonal Antibody	O75398	H	ELISA IHC
EAP0792	cdc45 Polyclonal Antibody	O75419	H M R	WB IHC IF
EAP1882	LECT1 Polyclonal Antibody	O75829	H M	WB IHC IF
ESAP11310	DCTN3 Polyclonal Antibody	O75935	H	ELISA IHC
EAP2569	FLOT1 Polyclonal Antibody	O75955	H M R	WB
ENT0857	CEP152 Polyclonal Antibody	O94986	H,M	WB,IHC,ELISA
EAP3361	CCNB2 Polyclonal Antibody	O95067	H M R	WB

Cell cycle

Cat.No.	Product Name	Swissprot	Reactivity	Application
ESAP15640	REC8 Polyclonal Antibody	O95072	H,M	ELISA WB IHC
ESAP11052	ZWINT Polyclonal Antibody	O95229	H	ELISA IHC
ENP0373	Phospho-KIF20A (S528) Polyclonal Antibody	O95235	H	WB,IHC,ELISA
ENT2470	KIF20A Polyclonal Antibody	O95235	H	WB,IHC,IF,ELISA
ESAP13968	TACC2 Polyclonal Antibody	O95359	H,M	ELISA WB IHC
EGM0325	GDF11 Polyclonal Antibody	O95390	H,R	WB
EAP2150	STAMBP Polyclonal Antibody	O95630	H M R	WB IHC IF
ENT1736	FOP Polyclonal Antibody	O95684	H,M,R	WB,IHC,IF,ELISA
ESAP11379	FAM107A Polyclonal Antibody	O95990	H	ELISA IHC
ENT3904	PTTG1/2/3 Polyclonal Antibody	O95997	H	WB,IHC,IF,ELISA
EAP3447	Phospho-CHEK2-S33/35 Polyclonal Antibody	O96017	H	WB
ENP0064	Phospho-Chk2 (S516) Polyclonal Antibody	O96017	H,Mk	WB,ELISA
ENP0065	Phospho-Chk2 (T68) Polyclonal Antibody	O96017	H,M,R	WB,IHC,ELISA
ENP0624	Phospho-Chk2 (T387) Polyclonal Antibody	O96017	H,M,R	WB,IHC,ELISA
ENT0905	Chk2 Polyclonal Antibody	O96017	H,M,R	WB,IHC,ELISA
ENP0538	Phospho-Chk2 (T383) Polyclonal Antibody	O96017	H,M,R,Mk	WB,IF,ELISA
ESAP12543	CCNE2 Polyclonal Antibody	O96020	H	ELISA IHC
ESAP17024	NRAS Polyclonal Antibody	P01111	H,M,R	ELISA WB IHC
EPM12350	KRAS Monoclonal Antibody	P01116	H;	ELISA,WB,IHC
ENT1481	EGF Polyclonal Antibody	P01133	H,M,R	WB,IHC,ELISA
EAP0472	IFNB1 Polyclonal Antibody	P01574	H	WB IHC IF
EAP1480	TK1 Polyclonal Antibody	P04183	H M R	WB IHC IF
ESAP15490	MAS1 Polyclonal Antibody	P04201	H,M,R	ELISA IHC
EGM0340	S100 beta Polyclonal Antibody	P04271	H,R,M	IHC
ENT5563	TNAP Polyclonal Antibody	P05186	H, R	WB ELISA

Cell cycle

Cat.No.	Product Name	Swissprot	Reactivity	Application
ESAP15063	ALPP Polyclonal Antibody	P05187	H	ELISA WB IHC
ENK5375	ALPP/ALPPL2 Polyclonal Antibody	P05187/P10696	H,M	WB,ELISA
ENT0253	AP-2 α / β Polyclonal Antibody	P05549/Q92481	H,M,R	WB,IHC,ELISA
ENP0240	Phospho-Rb (S780) Polyclonal Antibody	P06400	H,M,R	WB,IHC,IF,ELISA
ENP0242	Phospho-Rb (S807) Polyclonal Antibody	P06400	H,M,R	WB,IHC,ELISA
ENT4016	Rb Polyclonal Antibody	P06400	H,M,R	WB,IHC,ELISA
ESAP12108	RB1 (Phospho-Ser795) Polyclonal Antibody	P06400	H M R	WB IHC IF
EAP1776	Phospho-RB-S811 Polyclonal Antibody	P06400	H M R	WB IF
ESAP16460	PTMA Polyclonal Antibody	P06454	H,M,R	ELISA IHC
EAP0024	CDK1 Polyclonal Antibody	P06493	H M R	WB IHC IF
EAP1723	Phospho-CDK1-T14 Polyclonal Antibody	P06493	H M R	WB IF
ENP0053	Phospho-Cdc2 (T161) Polyclonal Antibody	P06493	H,M,R	WB,IHC,ELISA
ENP0054	Phospho-Cdc2 (Y15) Polyclonal Antibody	P06493	H,M,R,Mk	WB,ELISA
ENT0789	Cdc2 Polyclonal Antibody	P06493	H,M,R	WB,ELISA
ENT0829	Cdk1/Cdc2 Polyclonal Antibody	P06493	H,M,R	WB,IHC,IF,ELISA
ESAP12167	CDK1 (Phospho-Tyr15) Polyclonal Antibody	P06493	H M R	WB
ENP0059	Phospho-Cdk1/2/3 (T14) Polyclonal Antibody	P06493/P24941/Q00526	H,M,R,Mk	WB,IF,ELISA
ENT0828	Cdk1/2/3 Polyclonal Antibody	P06493/P24941/Q00526	H,M,R	WB,ELISA
ESAP17140	S100A9 Polyclonal Antibody	P06702	H,M,R	ELISA IHC
EPM12473	S100A6 Monoclonal Antibody	P06703	H;	ELISA,WB,IF,IHC
ESAP12845	PFN1 Polyclonal Antibody	P07737	H,M,R	ELISA WB
ENT4380	SP-B Polyclonal Antibody	P07988	H	WB,ELISA
ESAP10533	INHBA Polyclonal Antibody	P08476	H,M,R	ELISA WB IHC
ESAP14655	SPARC Polyclonal Antibody	P09486	H,M,R	ELISA WB IHC
ENT2349	Inhibin β -B Polyclonal Antibody	P09529	H,M,R	WB,ELISA

Cell cycle

Cat.No.	Product Name	Swissprot	Reactivity	Application
ESAP11032	ALPI Polyclonal Antibody	P09923	H	ELISA IHC
ENT0510	B-Myb Polyclonal Antibody	P10244	H,M,R	WB,IF,ELISA
EAP1996	ALPPL2 Polyclonal Antibody	P10696	H M	WB
ESAP12661	GHR Polyclonal Antibody	P10912	H,M,R	ELISA IHC
ENT1190	CYP19A1 Polyclonal Antibody	P11511	H,M,R	WB,IHC,IF,ELISA
EAP0102	CDK4 Polyclonal Antibody	P11802	H M R	WB IHC IF
EGM0363	PCNA Polyclonal Antibody	P12004	H,R,M	WB,IHC
EAP0534	PTHLH Polyclonal Antibody	P12272	H M R	WB IHC
EAP3948	NID1 Polyclonal Antibody	P14543	H	WB IHC
ENP0079	Phospho-Cyclin B1 (S126) Polyclonal Antibody	P14635	H,M,R	WB,IHC,ELISA
ENT1169	Cyclin B1 Polyclonal Antibody	P14635	H,M,R	WB,IHC,IF,ELISA
ESAP12221	CCNB1 (phospho-Ser147) Polyclonal Antibody	P14635	H	WB IHC IF
ENT5107	LIF Polyclonal Antibody	P15018	H	WB,ELISA
EAP0715	ACPP Polyclonal Antibody	P15309	H M R	WB IHC
ENT4863	Vav1 Polyclonal Antibody	P15498	H,M,R	WB,ELISA
ESAP12114	VAV1 (Phospho-Tyr174) Polyclonal Antibody	P15498	H M R	WB
ESAP10619	NCK1 Polyclonal Antibody	P16333	H,M	ELISA WB IHC
ENT1690	Fer Polyclonal Antibody	P16591	H,M,R	WB,IHC,IF,ELISA
ESAP13372	CD36 Polyclonal Antibody	P16671	H	ELISA WB IHC
ENT0695	CBP 35 Polyclonal Antibody	P17931	H,M,R	WB,IHC,IF,ELISA
EAP0749	PSMC3 Polyclonal Antibody	P17980	H M R	WB IHC IF
ENT0503	BMP-7 Polyclonal Antibody	P18075	H,M,R	WB,IHC,ELISA
EPM12786	phospho-RCC1(Ser12) Monoclonal Antibody	P18754	H,M;	ELISA
ESAP17121	RCC1 Polyclonal Antibody	P18754	H,M	ELISA WB
EAP3035	CCNA2 Polyclonal Antibody	P20248	H M R	WB IHC

Cell cycle

Cat.No.	Product Name	Swissprot	Reactivity	Application
EAP3957	OGN Polyclonal Antibody	P20774	H R	WB IHC
ESAP13341	BMP6 Polyclonal Antibody	P22004	H,M,R	ELISA WB IHC
ENP0664	Phospho-p70 S6 kinase α (S371) Polyclonal Antibody	P23443	H,M,R	WB,IHC,ELISA
ENP0214	Phospho-p70 S6 kinase α (S447) Polyclonal Antibody	P23443	H,M,R	WB,IHC,ELISA
ENP0215	Phospho-p70 S6 kinase α (T229) Polyclonal Antibody	P23443	H,M,R	WB,IHC,IF,ELISA
ENT3555	p70 S6 kinase α Polyclonal Antibody	P23443	H,M,R	WB,IHC,IF,ELISA
ESAP12180	RPS6KB1 (Phospho-Ser411) Polyclonal Antibody	P23443	H M R	WB IHC IF
ESAP12187	RPS6KB1 (Phospho-Ser424) Polyclonal Antibody	P23443	H M R	WB IHC IF
ENP0297	Phospho-Cyclin D1 (T286) Polyclonal Antibody	P24385	H,M,R	WB,IHC,ELISA
ENT1173	Cyclin D1 Polyclonal Antibody	P24385	H,M,R	WB,IHC,ELISA
ENT0335	ARP-1 Polyclonal Antibody	P24468	H,M,R	WB,IHC,IF,ELISA
EAP1815	CCNC Polyclonal Antibody	P24863	H M R	WB IHC IF
ENT1176	Cyclin E1 Polyclonal Antibody	P24864	H,M,R	WB,IHC,IF,ELISA
ENP0081	Phospho-Cyclin E1 (T395) Polyclonal Antibody	P24864	H	WB,IHC,ELISA
ENP0060	Phospho-Cdk2 (T160) Polyclonal Antibody	P24941	H,M,R	WB,IHC,ELISA
ENT0832	Cdk2 Polyclonal Antibody	P24941	H,M,R	WB,IHC,IF,ELISA
ENP0936	Phospho-IL-8R β (S347) Polyclonal Antibody	P25025	H,M	WB,IHC,IF,ELISA
ESAP12533	IL-8R β Polyclonal Antibody	P25025	H	ELISA WB IHC
ENT0258	APC Polyclonal Antibody	P25054	H,M,R	WB,IHC,IF,ELISA
ENC104	Cleaved-Thrombin R (S42) Polyclonal Antibody	P25116	H	WB,ELISA
ESAP16158	F2R Polyclonal Antibody	P25116	H	ELISA WB IHC
EAP2686	PTPN3 Polyclonal Antibody	P26045	H M R	WB
ENT1622	ERK 1 Polyclonal Antibody	P27361	H,M,R	WB,IF,ELISA
ENP0100	Phospho-ERK 1/2 (T202) Polyclonal Antibody	P27361/P28482	H,M,R	WB,ELISA
ENP0101	Phospho-ERK 1/2 (Y204) Polyclonal Antibody	P27361/P28482	H,M,R	WB,IHC,IF,ELISA

Cell cycle

Cat.No.	Product Name	Swissprot	Reactivity	Application
ENP1197	Phospho-ERK 1/2 (T202/Y204) Polyclonal Antibody	P27361/P28482	H,M,R	WB,IHC,ELISA
ENT1625	ERK 1/2 Polyclonal Antibody	P27361/P28482	H,M,R	WB,IHC,ELISA
ESAP14681	MAP4 Polyclonal Antibody	P27816	H	ELISA IHC
ENP0580	Phospho-SH-PTP1 (Y536) Polyclonal Antibody	P29350	H,M,R	WB,IHC,ELISA
ENT4291	SH-PTP1 Polyclonal Antibody	P29350	H,M,R	WB,IHC,ELISA
ESAP14582	PEBP1 Polyclonal Antibody	P30086	H,M,R	ELISA WB IHC
EAP1616	PPP2R1A Polyclonal Antibody	P30153	H M R	WB
EAP1929	PPP2R1B Polyclonal Antibody	P30154	H M R	WB IHC
ESAP16690	CDC27 Polyclonal Antibody	P30260	H,M,R	ELISA WB IHC
EAP0611	CCND2 Polyclonal Antibody	P30279	H M R	WB IHC IF
ENT1175	Cyclin D3 Polyclonal Antibody	P30281	H,M,R,Mk	WB,IHC,ELISA
ENP0390	Phospho-Wee1 (S642) Polyclonal Antibody	P30291	H,M,R	WB,ELISA
ENP0055	Phospho-Cdc25A (S75) Polyclonal Antibody	P30304	H,M,R	WB,IHC,ELISA
ENP0351	Phospho-Cdc25A (S124) Polyclonal Antibody	P30304	H,M,R	WB,ELISA
ESAP16332	CDC25A Polyclonal Antibody	P30304	H,M,R	ELISA WB IHC
ENP0057	Phospho-Cdc25B (S323) Polyclonal Antibody	P30305	H,M,R	WB,ELISA
ESAP16333	CDC25B Polyclonal Antibody	P30305	H,M	ELISA WB IHC
EAP0548	CDC25C Polyclonal Antibody	P30307	H M R	WB IHC ICC IF
ENP0058	Phospho-Cdc25C (S216) Polyclonal Antibody	P30307	H	WB,IHC,ELISA
ENP0779	Phospho-Axl (Y691) Polyclonal Antibody	P30530	H,M,R	WB,IHC,ELISA
EAP3253	CLIP1 Polyclonal Antibody	P30622	H	WB
EAP1430	S100A11 Polyclonal Antibody	P31949	H M R	WB IHC IF
EAP0017	BMI1 Polyclonal Antibody	P35226	H M R	WB IHC IF
ENT4166	ROR α Polyclonal Antibody	P35398	H,Mk	WB,IHC,IF,ELISA
ESAP17092	PPP1CC Polyclonal Antibody	P36873	H,M,R	ELISA WB IHC

Cell cycle

Cat.No.	Product Name	Swissprot	Reactivity	Application
ENP0200	Phospho-p21 (T145) Polyclonal Antibody	P38936	H,M,R	WB,IHC,ELISA
ENT3497	p21 Polyclonal Antibody	P38936	H,M,R	WB,ELISA
ENT4750	TRP2 Polyclonal Antibody	P40126	H,M	WB,IF,ELISA
ENK5413	TPO Polyclonal Antibody	P40225	H	WB,ELISA
ESAP10829	VHL Polyclonal Antibody	P40337	H	ELISA IHC
ENT1180	Cyclin F Polyclonal Antibody	P41002	H	WB,IHC,ELISA
EAP1373	CETN2 Polyclonal Antibody	P41208	H M R	WB IHC IF
EAP1010	TMPO Polyclonal Antibody	P42167	H M R	WB IHC IF
ESAP17078	PIK3CB Polyclonal Antibody	P42338	H,M,R	ELISA IHC
ENP0176	Phospho-mTOR (S2448) Polyclonal Antibody	P42345	H,M,R	WB,IHC,IF,ELISA
ENP0384	Phospho-mTOR (T2446) Polyclonal Antibody	P42345	H,M,R	WB,ELISA
ENT2913	mTOR Polyclonal Antibody	P42345	H,M,R	WB,IHC,ELISA
ENT3996	Rak Polyclonal Antibody	P42685	H,M,R	WB,IHC,IF,ELISA
ENP0827	Phospho-p16 (S326) Polyclonal Antibody	P42771	H	WB,IHC,ELISA
ENT3493	p16 Polyclonal Antibody	P42771	H,M	WB,ELISA
ENT3492	p15 Polyclonal Antibody	P42772	H,M,R	WB,IHC,IF,ELISA
ENT3495	p18 Polyclonal Antibody	P42773	H,M,Mk	WB,IHC,ELISA
EAP0831	MKI67 Polyclonal Antibody	P46013	H M R	WB IHC IF
EAP1363	RANGAP1 Polyclonal Antibody	P46060	H M R	WB IHC IF
ENP0201	Phospho-p27 (S10) Polyclonal Antibody	P46527	H,M,R	WB,ELISA
ENP0283	Phospho-p27 (T187) Polyclonal Antibody	P46527	H,M,R	WB,IHC,ELISA
ENP0359	Phospho-p27 (T198) Polyclonal Antibody	P46527	H	WB,ELISA
ENT3501	p27 Polyclonal Antibody	P46527	H	WB,ELISA
ENP0170	Phospho-MEK-3 (S218) Polyclonal Antibody	P46734	H,M,R	WB,IHC,ELISA
ENT2717	MEK-3 Polyclonal Antibody	P46734	H,M,R	WB,ELISA

Cell cycle

Cat.No.	Product Name	Swissprot	Reactivity	Application
EAP0708	CD151 Polyclonal Antibody	P48509	H M R	WB IHC
EAP2050	NASP Polyclonal Antibody	P49321	H M R	WB IHC
ENT0495	BM28 Polyclonal Antibody	P49736	H,M	WB,IHC,IF,ELISA
ESAP11260	COMP Polyclonal Antibody	P49747	H,M,R	ELISA WB IHC
ENT0972	CLK2 Polyclonal Antibody	P49760	H,M,R	WB,IHC,ELISA
ENP0676	Phospho-Tuberin (S939) Polyclonal Antibody	P49815	H,M,R	WB,IHC,ELISA
ENT4774	Tuberin Polyclonal Antibody	P49815	H,M,R	WB,IHC,IF,ELISA
ENP0122	Phospho-GSK3 α (S21) Polyclonal Antibody	P49840	H,M,R	WB,IHC,IP,ELISA
ENT2080	GSK3 α Polyclonal Antibody	P49840	H,M,R	WB,IHC,IP,ELISA
ENP0123	Phospho-GSK3 α/β (Y279/216) Polyclonal Antibody	P49840/P49841	H,M,R	WB,IHC,ELISA
ENT2081	GSK3 α/β Polyclonal Antibody	P49840/P49841	H,M,R	WB,IHC,ELISA
ENT3545	p57 Polyclonal Antibody	P49918	H	WB,IHC,ELISA
EAP0562	CDK7 Polyclonal Antibody	P50613	H M R	WB IHC IF
EAP0461	CDK9 Polyclonal Antibody	P50750	H M R	WB IHC IF
ENP0365	Phospho-Cdk9 (T186) Polyclonal Antibody	P50750	H,M,R	WB,ELISA
ENT1842	GALK1 Polyclonal Antibody	P51570	H,M,R	WB,IHC,IF,ELISA
EAP0657	HCFC1 Polyclonal Antibody	P51610	H M R	WB IHC
ENT1182	Cyclin H Polyclonal Antibody	P51946	H,M,R	WB,IHC,IF,ELISA
ENT2662	Mat1 Polyclonal Antibody	P51948	H,M,R	WB,IHC,ELISA
EAP1340	NEK2 Polyclonal Antibody	P51955	H M R	WB IHC IF
ENT1181	Cyclin G Polyclonal Antibody	P51959	H,M,R	WB,IHC,ELISA
ENT2722	MEK-6 Polyclonal Antibody	P52564	H,M,R	WB,IHC,IF,ELISA
EAP1525	EFNB2 Polyclonal Antibody	P52799	H M R	WB
EAP1021	PLK1 Polyclonal Antibody	P53350	H M R	WB IHC IF
ESAP11737	MAPK12 Polyclonal Antibody	P53778	H,M,R	ELISA WB IHC

Cell cycle

Cat.No.	Product Name	Swissprot	Reactivity	Application
ESAP16814	GAS1 Polyclonal Antibody	P54826	H	ELISA WB IHC
ESAP10516	AIF1 Polyclonal Antibody	P55008	H,M,R	ELISA WB IHC
ENT4866	VCP Polyclonal Antibody	P55072	H,M,R	WB,IHC,ELISA
EAP1822	CDKN2D Polyclonal Antibody	P55273	H	IHC IF
ENT2677	M-cadherin Polyclonal Antibody	P55291	H,M,R	WB,IHC,ELISA
ESAP17228	SIK1 Polyclonal Antibody	P57059	H,M,R	ELISA WB IHC
EAP2235	KLF3 Polyclonal Antibody	P57682	H M R	WB IHC IF
EAP3936	MLF1 Polyclonal Antibody	P58340	H	WB IF
ENK053	Acetyl-PTEN (K402) Polyclonal Antibody	P60484	H, M, R	WB,ELISA
ENP0237	Phospho-PTEN (S370) Polyclonal Antibody	P60484	H,M,R	WB,IHC,ELISA
ENP0573	Phospho-PTEN (S380/T382/T383) Polyclonal Antibody	P60484	H,M,R	WB,IHC,ELISA
ENT3893	PTEN Polyclonal Antibody	P60484	H,M,R,Mk	WB,IHC,ELISA
ESAP12075	PTEN (Phospho-Ser380/Thr382/Thr383) Polyclonal Antibody	P60484	H M R	WB IHC IF
EAP0323	CDC42 Polyclonal Antibody	P60953	H M R	WB IHC
ENT0939	Cks1 Polyclonal Antibody	P61024	H,M	WB,IF,ELISA
EAP1793	ACTR1A Polyclonal Antibody	P61163	H M R	WB
ENP0912	Phospho-Calmodulin (T80/S82) Polyclonal Antibody	P62158	H,M,R	WB,IHC,IF,ELISA
ENT0612	Calmodulin Polyclonal Antibody	P62158	H,M,R	WB,IHC,IF,ELISA
EAP2654	BTG1 Polyclonal Antibody	P62324	H M R	IHC IF
EAP1229	PPP2CB Polyclonal Antibody	P62714	H M R	WB IHC
ENT3998	Ran Polyclonal Antibody	P62826	H,M,R	WB,IHC,ELISA
EAP1031	GNB2L1 Polyclonal Antibody	P63244	H M R	WB IHC IF
ENT3830	PP2A-C α Polyclonal Antibody	P67775	H,M,R	WB,IHC,IF,ELISA
ENP0732	Phospho-Casein Kinase II β (S209) Polyclonal Antibody	P67870	H,M,R	WB,IHC,ELISA
ENT0644	Casein Kinase II β Polyclonal Antibody	P67870	H,M,R	WB,IHC,ELISA

Cell cycle

Cat.No.	Product Name	Swissprot	Reactivity	Application
ENT1167	Cyclin A Polyclonal Antibody	P78396/P20248	H,M,R,Mk	WB,IHC,IF,ELISA
EAP1936	RAE1 Polyclonal Antibody	P78406	H M R	WB IHC IF
ENP0356	Phospho-Ephrin-B1 (Y317) Polyclonal Antibody	P98172	H,M,R	WB,ELISA
ENT1594	Ephrin-B1 Polyclonal Antibody	P98172	H,M,R,Mk	WB,ELISA
ENP0284	Phospho-Ephrin-B1/2 (Y330) Polyclonal Antibody	P98172/P52799	H,M,R	WB,ELISA
ENT1595	Ephrin-B1/2 Polyclonal Antibody	P98172/P52799	H,M,R	WB,IHC,ELISA
ENP0812	Phospho-Ephrin-B1/2/3 (Y324) Polyclonal Antibody	P98172/P52799/ Q15768	H,M,R	WB,IHC,ELISA
ESAP12499	CDK3 Polyclonal Antibody	Q00526	H,M	ELISA IHC
EAP0449	CDK6 Polyclonal Antibody	Q00534	H M R	WB IHC IF
ESAP12223	CDK6 (phospho-Tyr24) Polyclonal Antibody	Q00534	H M	WB IHC IF
ENP0380	Phospho-Cdk5 (Y15) Polyclonal Antibody	Q00535	H,M,R,Mk	WB,IHC,ELISA
ESAP10349	CDK5 Polyclonal Antibody	Q00535	H,M,R	ELISA WB IHC
EAP1761	Phospho-MDM2-S166 Polyclonal Antibody	Q00987	H M R	WB IF
ENT2692	MDM2 Polyclonal Antibody	Q00987	H,M,Mk	WB,IHC,IF,ELISA
EAP2566	SET Polyclonal Antibody	Q01105	H M R	WB
ESAP11693	RASSF7 Polyclonal Antibody	Q02833	H	ELISA WB IHC
EAP0499	TAP2 Polyclonal Antibody	Q03519	H M R	WB IHC IF
EAP3184	NOTCH2 Polyclonal Antibody	Q04721	H M	WB IHC
ENC068	Cleaved-Notch 2 (A1734) Polyclonal Antibody	Q04721	H,M,R	WB,ELISA
ENC069	Cleaved-Notch 2 (D1733) Polyclonal Antibody	Q04721	H,M,R	WB,IHC,ELISA
ENT3767	PKC θ Polyclonal Antibody	Q04759	H,M,R	WB,IHC,ELISA
ESAP12126	PRKCQ (Phospho-Ser695) Polyclonal Antibody	Q04759	H M R	WB IHC
ESAP12194	PRKCQ (Phospho-Ser676) Polyclonal Antibody	Q04759	H M R	WB IHC IF
ENP0346	Phospho-Ron (S1394) Polyclonal Antibody	Q04912	H,M	WB,ELISA
ENT5609	Ron α Polyclonal Antibody	Q04912	H	WB ELISA

Cell cycle

Cat.No.	Product Name	Swissprot	Reactivity	Application
ESAP17095	PPP2R3A Polyclonal Antibody	Q06190	H	ELISA WB IHC
ENT0268	APLP-2 Polyclonal Antibody	Q06481	H,M,R	WB,IHC,ELISA
ENT3211	Nup160 Polyclonal Antibody	Q12769	H,M	WB,ELISA
ESAP15348	FSTL1 Polyclonal Antibody	Q12841	H,M,R	ELISA IHC
ENT4244	Seprase Polyclonal Antibody	Q12884	H,M,R	WB,IHC,ELISA
ESAP13484	PTPN13 Polyclonal Antibody	Q12923	H	ELISA IHC
ESAP13786	PTP4A2 Polyclonal Antibody	Q12974	H,M,R	ELISA WB IHC
ESAP12938	AKAP6 Polyclonal Antibody	Q13023	H	ELISA IHC
ESAP12955	CDC16 Polyclonal Antibody	Q13042	H,M	ELISA WB IHC
ESAP10807	TRAF1 Polyclonal Antibody	Q13077	H,M	ELISA WB IHC
ENT2773	MKP-2 Polyclonal Antibody	Q13115	H,M,R,Mk	WB,IHC,ELISA
ENT2041	GPS2 Polyclonal Antibody	Q13227	H,M,R	WB,ELISA
EAP0565	MAD2L1 Polyclonal Antibody	Q13257	H M R	WB IHC IF
ESAP13423	CTBP1 Polyclonal Antibody	Q13363	H,M,R	ELISA WB IHC
EAP2628	UBE2V1 Polyclonal Antibody	Q13404	H M	WB IHC IF
ENT4162	Rock-1 Polyclonal Antibody	Q13464	H,M,R,Mk	WB,IHC,ELISA
EAP0058	MTM1 Polyclonal Antibody	Q13496	H M R	WB IHC
EAP0843	PIN1 Polyclonal Antibody	Q13526	H M R	WB IHC IF
EAP0989	CAMK2B Polyclonal Antibody	Q13554	H M R	WB
ENP0781	Phospho-CaMKII β / γ / δ (T287) Polyclonal Antibody	Q13554/Q13555/ Q13557	H,M,R	WB,IHC,ELISA
ENT0625	CaMKII β / γ Polyclonal Antibody	Q13555/Q13554	H,M,R	WB,IF,ELISA
ENT1426	Dynactin 2 Polyclonal Antibody	Q13561	H,M,R	WB,IHC,ELISA
ESAP10715	PTCH1 Polyclonal Antibody	Q13635	H,M	ELISA WB IHC
ESAP15338	FHL3 Polyclonal Antibody	Q13643	H	ELISA IHC
EAP1825	CIRBP Polyclonal Antibody	Q14011	H M R	WB IHC IF

Cell cycle

Cat.No.	Product Name	Swissprot	Reactivity	Application
EAP3427	TOB2 Polyclonal Antibody	Q14106	H	WB
ESAP14187	TRIM29 Polyclonal Antibody	Q14134	H,M	ELISA WB IHC
ENT4250	Septin 6 Polyclonal Antibody	Q14141	H,M,R	WB,IHC,ELISA
ESAP10313	BTG3 Polyclonal Antibody	Q14201	H	ELISA IHC
ESAP11308	DCTN1 Polyclonal Antibody	Q14203	H,M,R	ELISA WB IHC
EAP3146	CAPRIN1 Polyclonal Antibody	Q14444	H M R	WB
ENP0872	Phospho-Separase (S801) Polyclonal Antibody	Q14674	H,M	WB,IHC,IF,ELISA
ENT4243	Separase Polyclonal Antibody	Q14674	H,M	WB,IHC,IF,ELISA
EAP1777	Phospho-SMC1A-S957 Polyclonal Antibody	Q14683	H	WB IHC IF
EAP2105	SMC1A Polyclonal Antibody	Q14683	H M R	WB IHC IF
ENT3210	NuMA Polyclonal Antibody	Q14980	H	WB,IHC,ELISA
ENT2106	hCAP-H Polyclonal Antibody	Q15003	H	WB,ELISA
ESAP14468	MAD2L1BP Polyclonal Antibody	Q15013	H	ELISA WB IHC
EAP1618	SEPT2 Polyclonal Antibody	Q15019	H M R	WB IHC
ESAP11191	NCAPD2 Polyclonal Antibody	Q15021	H,M	ELISA WB IHC
ENT3510	p35 Polyclonal Antibody	Q15078	H,M,R	WB,IHC,IF,ELISA
EAP1546	PCM1 Polyclonal Antibody	Q15154	H M R	WB
ENT3931	Rab 35 Polyclonal Antibody	Q15286	H,M,R	WB,ELISA
ESAP15104	ZMYND11 Polyclonal Antibody	Q15326	H,M	ELISA WB IHC
EAP0934	DLGAP5 Polyclonal Antibody	Q15398	H M	WB IHC IF
EAP2127	TRIP10 Polyclonal Antibody	Q15642	H M	WB IHC IF
ESAP16058	KISS1 Polyclonal Antibody	Q15726	H,M	ELISA WB IHC
EAP0859	STK11 Polyclonal Antibody	Q15831	H M R	WB IHC IF
ENP0328	Phospho-LKB1 (T189) Polyclonal Antibody	Q15831	H,M	WB,ELISA
ENT4251	Septin 7 Polyclonal Antibody	Q16181	H,M,R	WB,IHC,ELISA

Cell cycle

Cat.No.	Product Name	Swissprot	Reactivity	Application
ENP0751	Phospho-Cdc37 (S13) Polyclonal Antibody	Q16543	H,M,R	WB,IHC,ELISA
ENT0804	Cdc37 Polyclonal Antibody	Q16543	H,M,R	WB,IHC,IF,ELISA
ENT0843	CDKN3 Polyclonal Antibody	Q16667	H,M	WB,IHC,ELISA
EAP3606	CSPP1 Polyclonal Antibody	Q1MSJ5	H M	WB
ESAP15294	ERCC6L Polyclonal Antibody	Q2NKX8	H	ELISA IHC
ESAP11584	PLEKHG6 Polyclonal Antibody	Q3KR16	H,M	ELISA WB IHC
ENT3798	PLK-5 Polyclonal Antibody	Q496M5	H	WB,ELISA
ENP0761	Phospho-Pdcd-4 (S457) Polyclonal Antibody	Q53EL6	H,M,R	WB,IHC,ELISA
ENT3625	Pdcd-4 Polyclonal Antibody	Q53EL6	H,M,R	WB,IHC,IF,ELISA
ENT0862	CEP55 Polyclonal Antibody	Q53EZ4	H	WB,IHC,ELISA
EAP2584	PHLDA2 Polyclonal Antibody	Q53GA4	H	WB IHC IF
ESAP11031	CDCA8 Polyclonal Antibody	Q53HL2	H	ELISA WB IHC
ESAP15572	ODF2 Polyclonal Antibody	Q5BJF6	H,M,R	ELISA WB IHC
ENT0842	CdkL4 Polyclonal Antibody	Q5MAI5	H	WB,IHC,IF,ELISA
EAP0890	SPDYA Polyclonal Antibody	Q5MJ70	H M R	WB IHC IF
ENT0858	CEP170 Polyclonal Antibody	Q5SW79	H	WB,IHC,ELISA
ESAP15497	MEI1 Polyclonal Antibody	Q5TIA1	H	ELISA IHC
ENT4053	Repo-Man Polyclonal Antibody	Q69YH5	H	WB,IHC,ELISA
ESAP11234	CENPP Polyclonal Antibody	Q6IPU0	H	ELISA WB
EAP3922	LLGL2 Polyclonal Antibody	Q6P1M3	H M R	WB IHC
EAP4368	RICTOR Polyclonal Antibody	Q6R327	H M	WB
ESAP12576	ENPP7 Polyclonal Antibody	Q6UWV6	H,R	ELISA WB IHC
ENT4052	Repetin Polyclonal Antibody	Q6XPR3	H	WB,ELISA
ENT4246	Septin 14 Polyclonal Antibody	Q6ZU15	H	WB,ELISA
ENT2812	Mob3C Polyclonal Antibody	Q70IA8	H,M	WB,IHC,ELISA

Cell cycle

Cat.No.	Product Name	Swissprot	Reactivity	Application
ESAP11570	CENPU Polyclonal Antibody	Q71F23	H	ELISA IHC
ESAP11228	CDC37L1 Polyclonal Antibody	Q7L3B6	H,M,R	ELISA IHC
EAP4281	CHMP1B Polyclonal Antibody	Q7LBR1	H M R	WB
ESAP11278	CXXC5 Polyclonal Antibody	Q7LFL8	H,M,R	ELISA WB IHC
ENT4464	Strad Polyclonal Antibody	Q7RTN6	H,M	WB,IHC,ELISA
EAP2164	CLASP1 Polyclonal Antibody	Q7Z460	H M R	WB IHC IF
EAP3537	HAUS6 Polyclonal Antibody	Q7Z4H7	H	WB
ESAP16819	R3HCC1L Polyclonal Antibody	Q7Z5L2	H,M	ELISA IHC
ESAP11157	VTCN1 Polyclonal Antibody	Q7Z7D3	H,M,R	ELISA IHC
ESAP10138	DAZ4 Polyclonal Antibody	Q86SG3	H	ELISA IHC
ESAP15000	NEK8 Polyclonal Antibody	Q86SG6	H,M,R	ELISA IHC
ENT2811	Mob3B Polyclonal Antibody	Q86TA1	H,M	WB,IHC,ELISA
EAP1975	TLK2 Polyclonal Antibody	Q86UE8	H M R	WB IHC IF
EAP3412	CARM1 Polyclonal Antibody	Q86X55	H M R Mk	WB
ESAP16659	NCAPG2 Polyclonal Antibody	Q86XI2	H	ELISA IHC
ESAP11240	CEP97 Polyclonal Antibody	Q8IW35	H	ELISA WB IHC
ESAP15756	ABI1 Polyclonal Antibody	Q8IZP0	H,M,R	ELISA WB IHC
ESAP17156	SYCP3 Polyclonal Antibody	Q8IZU3	H,M,R	ELISA WB IHC
ENT0855	Centrobin Polyclonal Antibody	Q8N137	H	WB,IHC,ELISA
ESAP13454	EID3 Polyclonal Antibody	Q8N140	H,M	ELISA WB IHC
ENT0206	ALS2CR8 Polyclonal Antibody	Q8N187	H	WB,IHC,ELISA
ESAP11077	STK40 Polyclonal Antibody	Q8N2I9	H,M,R	ELISA WB IHC
EAP3683	APITD1 Polyclonal Antibody	Q8N2Z9	H	WB
ESAP11734	STAG2 Polyclonal Antibody	Q8N3U4	H,M	ELISA WB IHC
EAP4327	KIF2B Polyclonal Antibody	Q8N4N8	H M R	WB IHC IF

Cell cycle

Cat.No.	Product Name	Swissprot	Reactivity	Application
ENT3490	p14 Polyclonal Antibody	Q8N726	H	WB,IHC,IF,ELISA
EAP4319	TSEN2 Polyclonal Antibody	Q8NCE0	H M	WB IHC IF
ENT3665	Periphilin 1 Polyclonal Antibody	Q8NEY8	H,M	WB,IHC,ELISA
ESAP17162	SEMA6D Polyclonal Antibody	Q8NFY4	H,M	ELISA IHC
EAP3650	NEDD1 Polyclonal Antibody	Q8NHV4	H M R	WB
ESAP13291	UHMK1 Polyclonal Antibody	Q8TAS1	H,M,R	ELISA WB
ESAP16432	SPATA20 Polyclonal Antibody	Q8TB22	H	ELISA WB IHC
ESAP16570	NEK9 Polyclonal Antibody	Q8TD19	H,M	ELISA IHC
ENT0535	BRSK1 Polyclonal Antibody	Q8TDC3	H,M	WB,IF,ELISA
ENT0588	Cables1 Polyclonal Antibody	Q8TDN4	H,M	WB,IHC,IF,ELISA
ESAP11177	BTN2A2 Polyclonal Antibody	Q8WVV5	H	ELISA IHC
ESAP11250	CKAP2 Polyclonal Antibody	Q8WWK9	H	ELISA IHC
ENT4245	Septin 1 Polyclonal Antibody	Q8WYJ6	H,M,R	WB,IHC,ELISA
EAP3294	TFAP2B Polyclonal Antibody	Q92481	H M R	WB
EPM12275	FAM3C Monoclonal Antibody	Q92520	H;	ELISA,WB
ESAP15025	BAP1 Polyclonal Antibody	Q92560	H,M,R	ELISA WB IHC
ENT4252	Septin 8 Polyclonal Antibody	Q92599	H,M,R	WB,ELISA
ESAP17135	RORB Polyclonal Antibody	Q92753	H,M,R	ELISA WB IHC
ENT0254	AP-2 γ Polyclonal Antibody	Q92754	H,M,R	WB,IHC,ELISA
ESAP14955	STAM Polyclonal Antibody	Q92783	H,M	ELISA IHC
ENK052	Acetyl-PCAF (K428) Polyclonal Antibody	Q92831	H, M	WB,ELISA
ENT3615	PCAF Polyclonal Antibody	Q92831	H,M,R	WB,IHC,ELISA
EAP1988	UFD1L Polyclonal Antibody	Q92890	H M R	WB IHC IF
ESAP10549	COPS5 Polyclonal Antibody	Q92905	H,M	ELISA WB IHC
EAP0945	USP7 Polyclonal Antibody	Q93009	H M R	WB IHC IF

Cell cycle

Cat.No.	Product Name	Swissprot	Reactivity	Application
EAP0079	TBRG4 Polyclonal Antibody	Q969Z0	H M R	WB IHC IF
ENT1541	Eme1 Polyclonal Antibody	Q96AY2	H	WB,ELISA
ENT3850	PRAS40 Polyclonal Antibody	Q96B36	H,M,R	WB,IHC,ELISA
ESAP11315	DDIT4L Polyclonal Antibody	Q96D03	H,M,R	ELISA IHC
ESAP13677	MTBP Polyclonal Antibody	Q96DY7	H,M	ELISA IHC
EAP3807	DDX11 Polyclonal Antibody	Q96FC9	H	WB
ESAP16431	SIPA1 Polyclonal Antibody	Q96FS4	H	ELISA IHC
ENT0327	ARK-2 Polyclonal Antibody	Q96GD4	H,M,R,Mk	WB,IHC,IF,ELISA
ENT0421	AurB/C Polyclonal Antibody	Q96GD4/Q9UQB9	H,M,R	WB,IHC,ELISA
ENT0704	CCDC45 Polyclonal Antibody	Q96GE4	H,M,R	WB,ELISA
ESAP16646	BOD1 Polyclonal Antibody	Q96IK1	H,M,R	ELISA IHC
EGM0372	PBK Polyclonal Antibody	Q96KB5	H,R,M	WB,IHC
ENP0330	Phospho-PBK (T9) Polyclonal Antibody	Q96KB5	H	WB,IHC,ELISA
ESAP14671	SPATA17 Polyclonal Antibody	Q96L03	H	ELISA WB IHC
ESAP13584	IPO9 Polyclonal Antibody	Q96P70	H,M	ELISA WB IHC
ESAP14011	TRERF1 Polyclonal Antibody	Q96PN7	H,M	ELISA IHC
EAP0944	UHRF2 Polyclonal Antibody	Q96PU4	H M R	WB IHC IF
ESAP16567	NEK1 Polyclonal Antibody	Q96PY6	H,M	ELISA IHC
ESAP11147	ASB2 Polyclonal Antibody	Q96Q27	H,M,R	ELISA IHC
ESAP14654	SPAG5 Polyclonal Antibody	Q96R06	H,M	ELISA IHC
EAP3583	TRIB3 Polyclonal Antibody	Q96RU7	H M	WB
EAP2198	CSRNP1 Polyclonal Antibody	Q96S65	H M R	IHC IF
ESAP13922	SMC6 Polyclonal Antibody	Q96SB8	H	ELISA WB IHC
ESAP11671	RMDN3 Polyclonal Antibody	Q96TC7	H,M,R	ELISA WB IHC
ENT2824	MPP9 Polyclonal Antibody	Q99550	H	WB,ELISA

Cell cycle

Cat.No.	Product Name	Swissprot	Reactivity	Application
ESAP14622	S100A13 Polyclonal Antibody	Q99584	H,M	ELISA IHC
ENT0819	CdcA3 Polyclonal Antibody	Q99618	H,M,R	WB,IHC,IF,ELISA
ESAP17080	PKMYT1 Polyclonal Antibody	Q99640	H,M	ELISA WB IHC
ENT0893	CGREF1 Polyclonal Antibody	Q99674	H	WB,IHC,ELISA
ENK5366	CGR19 Polyclonal Antibody	Q99675	H	WB,ELISA
ENT0817	Cdc6 Polyclonal Antibody	Q99741	H,M	WB,IHC,ELISA
ESAP10759	SPAG8 Polyclonal Antibody	Q99932	H	ELISA IHC
EAP4069	VRK1 Polyclonal Antibody	Q99986	H M R	WB IHC
ENT1888	GDF-15 Polyclonal Antibody	Q99988	H	WB,ELISA
EAP2634	DHRS9 Polyclonal Antibody	Q9BPW9	H M R	WB IHC IF
EAP1857	GORASP1 Polyclonal Antibody	Q9BQQ3	H	WB IHC IF
ESAP15238	DCTN5 Polyclonal Antibody	Q9BTE1	H,M	ELISA IHC
ESAP12764	MCMBP Polyclonal Antibody	Q9BTE3	H,R	ELISA WB IHC
ESAP11235	CENPO Polyclonal Antibody	Q9BU64	H	ELISA IHC
ESAP11336	DUSP26 Polyclonal Antibody	Q9BV47	H,M,R	ELISA IHC
EAP2173	NTMT1 Polyclonal Antibody	Q9BV86	H M	WB IHC IF
EAP1980	TPPP3 Polyclonal Antibody	Q9BW30	H M R	WB IHC
ENT5116	SCP-2 Polyclonal Antibody	Q9BX26	H	WB,ELISA
ESAP13388	CDCA4 Polyclonal Antibody	Q9BXL8	H,M	ELISA IHC
ESAP11624	NUSAP1 Polyclonal Antibody	Q9BXS6	H	ELISA WB
EAP4291	ALOXE3 Polyclonal Antibody	Q9BYJ1	H	WB
ESAP13433	RHOBTB2 Polyclonal Antibody	Q9BYZ6	H,M,R	ELISA IHC
ESAP15965	FOXP3 Polyclonal Antibody	Q9BZS1	H,M	ELISA WB
EAP4263	SEMA4C Polyclonal Antibody	Q9C0C4	H M	WB
EAP1603	NDEL1 Polyclonal Antibody	Q9GZM8	H R	WB

Cell cycle

Cat.No.	Product Name	Swissprot	Reactivity	Application
ESAP11588	NAT10 Polyclonal Antibody	Q9H0A0	H,M	ELISA WB IHC
ENT4841	USP44 Polyclonal Antibody	Q9H0E7	H	WB,ELISA
EAP1293	RACGAP1 Polyclonal Antibody	Q9H0H5	H M	WB IHC IF
ESAP13810	RBM38 Polyclonal Antibody	Q9H0Z9	H,M	ELISA WB IHC
ENT4012	RASSF4 Polyclonal Antibody	Q9H2L5	H,R	WB,ELISA
EAP4346	CHMP4B Polyclonal Antibody	Q9H444	H M R	WB
ENT1184	Cyclin M2 Polyclonal Antibody	Q9H8M5	H,M,R	WB,ELISA
ESAP15169	CHMP1A Polyclonal Antibody	Q9HD42	H,M	ELISA WB IHC
EAP3446	WDR6 Polyclonal Antibody	Q9NNW5	H M R	WB
ESAP12831	PARD6A Polyclonal Antibody	Q9NPB6	H	ELISA WB IHC
ENT2122	HEI10 Polyclonal Antibody	Q9NPC3	H	WB,IHC,ELISA
EAP3505	BRD7 Polyclonal Antibody	Q9NPI1	H M R	WB
ESAP11569	MKKS Polyclonal Antibody	Q9NPJ1	H	ELISA IHC
ESAP14866	ANLN Polyclonal Antibody	Q9NQW6	H,M	ELISA IHC
ESAP11166	BIN3 Polyclonal Antibody	Q9NQY0	H,M,R	ELISA WB
ESAP15254	DLL4 Polyclonal Antibody	Q9NR61	H,M	ELISA IHC
ESAP17251	STK36 Polyclonal Antibody	Q9NRP7	H	ELISA IHC
ESAP14629	SIRT3 Polyclonal Antibody	Q9NTG7	H,M	ELISA WB IHC
ESAP15067	PDS5B Polyclonal Antibody	Q9NTI5	H,M,R	ELISA WB
ESAP13921	SMC4 Polyclonal Antibody	Q9NTJ3	H,M	ELISA WB IHC
ESAP11551	MBNL3 Polyclonal Antibody	Q9NUK0	H,M	ELISA IHC
ESAP11140	AURKAIP1 Polyclonal Antibody	Q9NWT8	H	ELISA WB
EAP2185	NDE1 Polyclonal Antibody	Q9NXR1	H M	WB IHC IF
ESAP10648	CDKN2AIP Polyclonal Antibody	Q9NXV6	H	ELISA IHC
ESAP16789	FAM13B Polyclonal Antibody	Q9NYF5	H,M	ELISA IHC

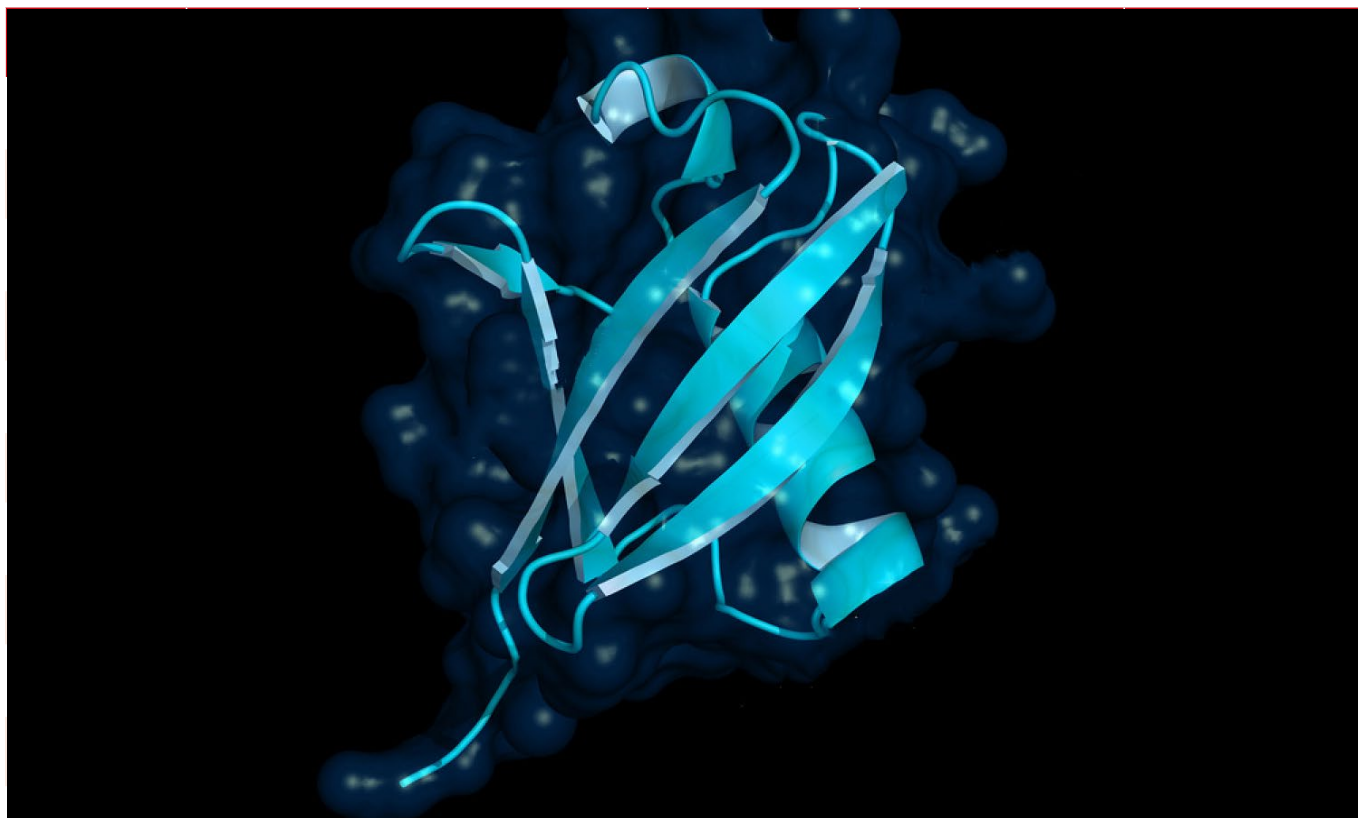
Cell cycle

Cat.No.	Product Name	Swissprot	Reactivity	Application
ESAP13497	FMN2 Polyclonal Antibody	Q9NZ56	H	ELISA IHC
EAP3817	DSPP Polyclonal Antibody	Q9NZW4	H M R	WB
ESAP13656	MDFIC Polyclonal Antibody	Q9P1T7	H	ELISA IHC
ESAP16915	KLHL8 Polyclonal Antibody	Q9P2G9	H	ELISA WB IHC
ESAP11522	KLHL9 Polyclonal Antibody	Q9P2J3	H,M	ELISA WB
ENT1295	Dbf4 Polyclonal Antibody	Q9UBU7	H,M,Mk	WB,IHC,ELISA
ESAP13028	NDRG3 Polyclonal Antibody	Q9UGV2	H,M,R	ELISA WB IHC
ENT4248	Septin 3 Polyclonal Antibody	Q9UH03	H,M,R	WB,ELISA
EAP4161	MAD2L2 Polyclonal Antibody	Q9UI95	H M R	WB
ESAP10439	DUSP13 Polyclonal Antibody	Q9UII6	H,M	ELISA IHC
EPM12745	FKBPL Monoclonal Antibody	Q9UIM3	H,M;	ELISA
ENT4434	STAG3 Polyclonal Antibody	Q9UJ98	H	WB,IHC,ELISA
ESAP13014	CDC23 Polyclonal Antibody	Q9UJX2	H,M	ELISA WB IHC
ESAP14878	ANAPC5 Polyclonal Antibody	Q9UJX4	H,M,R	ELISA WB IHC
ESAP14876	ANAPC2 Polyclonal Antibody	Q9UJX6	H,M	ELISA WB IHC
ESAP16286	GDF2 Polyclonal Antibody	Q9UK05	H,M	ELISA WB IHC
ESAP13455	AGO1 Polyclonal Antibody	Q9UL18	H,M	ELISA IHC
ESAP14697	RARRES3 Polyclonal Antibody	Q9UL19	H	ELISA IHC
ESAP13802	RAB21 Polyclonal Antibody	Q9UL25	H,M,R	ELISA IHC
ESAP13815	ZMIZ1 Polyclonal Antibody	Q9ULJ6	H,M	ELISA WB IHC
ESAP13799	CIZ1 Polyclonal Antibody	Q9ULV3	H	ELISA WB
ENT4712	TPX2 Polyclonal Antibody	Q9ULW0	H,M	WB,IHC,ELISA
ESAP13027	NDRG2 Polyclonal Antibody	Q9UN36	H,M,R	ELISA WB IHC
EAP2171	VPS4A Polyclonal Antibody	Q9UN37	H M R	WB IHC IF
ENT1134	CSN3 Polyclonal Antibody	Q9UNS2	H,M,R	WB,IHC,IF,ELISA

Cell cycle

Cat.No.	Product Name	Swissprot	Reactivity	Application
EAP2347	LHX6 Polyclonal Antibody	Q9UPM6	H M	WB IHC IF
ESAP11338	MAPRE3 Polyclonal Antibody	Q9UPY8	H,M,R	ELISA WB IHC
ENP0421	Phospho-Intestinal Cell Kinase (Y159) Polyclonal Antibody	Q9UPZ9	H,M,R	WB,ELISA
ENT2375	Intestinal Cell Kinase Polyclonal Antibody	Q9UPZ9	H,M,R	WB,IHC,ELISA
ESAP16554	AURKC Polyclonal Antibody	Q9UQB9	H,M	ELISA WB IHC
ENP0279	Phospho-CaMKII α / β / δ (T305) Polyclonal Antibody	Q9UQM7/Q13554/Q13557	H,M,R	WB,IHC,ELISA
ESAP13639	LZTS1 Polyclonal Antibody	Q9Y250	H,M,R	ELISA IHC
EAP1907	NUDC Polyclonal Antibody	Q9Y266	H M R	WB IHC IF
ENP0826	Phospho-NUDC (S326) Polyclonal Antibody	Q9Y266	H,M,R	WB,IHC,ELISA
ESAP11332	DRG1 Polyclonal Antibody	Q9Y295	H,M	ELISA WB IHC
EAP3452	NINL Polyclonal Antibody	Q9Y2I6	H M	WB
ESAP11155	AXIN2 Polyclonal Antibody	Q9Y2T1	H,M,R	ELISA WB IHC
ESAP15510	MRPL11 Polyclonal Antibody	Q9Y3B7	H,M,R	ELISA WB IHC
EAP4253	FAM96B Polyclonal Antibody	Q9Y3D0	H M R	WB
ESAP15071	ASB3 Polyclonal Antibody	Q9Y575	H	ELISA WB
ENT4388	SPT16 Polyclonal Antibody	Q9Y5B9	H,M	WB,IHC,ELISA
ESAP11259	COL4A3BP Polyclonal Antibody	Q9Y5P4	H,M	ELISA WB IHC
ENT4522	TACC3 Polyclonal Antibody	Q9Y6A5	H,M	WB,IHC,IF,ELISA
ESAP14466	MAD1L1 Polyclonal Antibody	Q9Y6D9	H,M	ELISA WB IHC
EPM12172	BrdU Monoclonal Antibody		H,M,R;	ELISA,IF,IHC

Proteolysis and ubiquitin



Cat.No.	Product Name	Swissprot	Reactivity	Application
EAP2458	UBA6 Polyclonal Antibody	A0AVT1	H M R	WB IHC IF
ENT3886	PSMD11 Polyclonal Antibody	O00231	H,M	WB,IHC,ELISA
ENT3887	PSMD12 Polyclonal Antibody	O00232	H,M,R	WB,IHC,ELISA
ESAP14605	PSMD9 Polyclonal Antibody	O00233	H,M,R	ELISA WB IHC
ESAP10712	PSMD14 Polyclonal Antibody	O00487	H,M	ELISA WB IHC
EAP1440	UBE2C Polyclonal Antibody	O00762	H M R	WB IHC IF
EAP1492	TPP1 Polyclonal Antibody	O14773	H M R	WB
ENT0617	Calpain 9 Polyclonal Antibody	O14815	H	WB,ELISA
ENP0132	Phospho-Hrs (Y216) Polyclonal Antibody	O14964	H,M,R	WB,ELISA
ENT2228	Hrs Polyclonal Antibody	O14964	H,M,R	WB,IHC,IF,ELISA
ESAP10898	ADAMDEC1 Polyclonal Antibody	O15204	H	ELISA IHC
EAP1435	UBD Polyclonal Antibody	O15205	H M	WB IHC IF
ENT2760	Midline-1 Polyclonal Antibody	O15344	H,M,R	WB,IHC,IF,ELISA

Proteolysis and ubiquitin

Cat.No.	Product Name	Swissprot	Reactivity	Application
EAP2501	TMPRSS2 Polyclonal Antibody	O15393	H M R	WB IHC
EAP2378	CAPN5 Polyclonal Antibody	O15484	H M R	WB IHC IF
ENT3742	PJA2 Polyclonal Antibody	O43164	H	WB,ELISA
EAP4079	ADAM12 Polyclonal Antibody	O43184	H M R	WB IHC
EAP2684	KLK10 Polyclonal Antibody	O43240	H M	WB IHC IF
ESAP10711	PSMD3 Polyclonal Antibody	O43242	H,M	ELISA WB IHC
EAP2695	SPINT1 Polyclonal Antibody	O43278	H	WB IHC IF
EAP4172	SPINT2 Polyclonal Antibody	O43291	H	IHC IF
ESAP14796	ADAM20 Polyclonal Antibody	O43506	H	ELISA WB IHC
ENC056	Cleaved-KLK8 (V33) Polyclonal Antibody	O60259	H	WB,ELISA
ESAP15464	KLK8 Polyclonal Antibody	O60259	H	ELISA IHC
ENT3593	Parkin Polyclonal Antibody	O60260	H	WB,IHC,ELISA
EAP0357	CST8 Polyclonal Antibody	O60676	H M	WB IHC IF
ESAP13671	MMP20 Polyclonal Antibody	O60882	H,M	ELISA WB IHC
ESAP13190	ADAM11 Polyclonal Antibody	O75078	H,M	ELISA WB IHC
ESAP15658	RNF40 Polyclonal Antibody	O75150	H,M,R	ELISA WB IHC
EAP1002	ADAMTS4 Polyclonal Antibody	O75173	H M R	WB
ESAP13825	TRIM3 Polyclonal Antibody	O75382	H,M,R	ELISA WB IHC
ESAP11659	PMPCB Polyclonal Antibody	O75439	H,M,R	ELISA WB IHC
ESAP11041	USP2 Polyclonal Antibody	O75604	H,M,R	ELISA IHC
EAP0724	PSMD10 Polyclonal Antibody	O75832	H M R	WB IHC IF
ENC064	Cleaved-MMP-23 (Y79) Polyclonal Antibody	O75900	H,M,R	WB,ELISA
ESAP16978	MMP23B Polyclonal Antibody	O75900	H	ELISA WB IHC
EAP1513	PIAS2 Polyclonal Antibody	O75928	H M R	WB IHC IF
EAP2305	RNF8 Polyclonal Antibody	O76064	H	IHC IF

Proteolysis and ubiquitin

Cat.No.	Product Name	Swissprot	Reactivity	Application
EPM12533	USP1 Monoclonal Antibody	O94782	H;	ELISA,WB,IHC
ENT4832	USP19 Polyclonal Antibody	O94966	H,M,R	WB,IHC,ELISA
EAP1484	GABARAP Polyclonal Antibody	O95166	H M R	WB IHC IF
ESAP13233	ARIH2 Polyclonal Antibody	O95376	H,M	ELISA WB
ESAP16247	ADAMTS2 Polyclonal Antibody	O95450	H	ELISA IHC
EPM12669	PSMG1 Monoclonal Antibody	O95456	H;	ELISA
ESAP13466	EPPIN Polyclonal Antibody	O95925	H,M	ELISA WB IHC
ESAP14894	NAPSA Polyclonal Antibody	O96009	H,M	ELISA WB IHC
EAP0417	F10 Polyclonal Antibody	P00742	H M R	WB IHC IF
ENC082	Cleaved-Factor X/ Factor X LC (A41) Polyclonal Antibody	P00742	H	WB,ELISA
ENC083	Cleaved-Factor Xa activated HC (I235) Polyclonal Antibody	P00742	H,M,R	WB,ELISA
ENC103	Cleaved-Plasminogen HC A short form (V98) Polyclonal Antibody	P00747	H,M,R	WB,ELISA
ESAP17089	PLG Polyclonal Antibody	P00747	H,R	ELISA WB IHC
ESAP13124	PLAT Polyclonal Antibody	P00750	H	ELISA WB IHC
EAP0240	SPINK1 Polyclonal Antibody	P00995	H M	WB IHC IF
EAP0186	SERPINA3 Polyclonal Antibody	P01011	H M R	WB IHC IF
EPM12141	Alpha-2-macroglobulin Monoclonal Antibody	P01023	H;	ELISA,IHC,WB
ENT4658	TIMP-1 Polyclonal Antibody	P01033	H,M,R	WB,ELISA
ESAP15014	CST4 Polyclonal Antibody	P01036	H	ELISA IHC
ENT1255	Cystatin SN Polyclonal Antibody	P01037	H	IHC,IF,ELISA
ENC096	Cleaved-Kininogen-1 HC (K380) Polyclonal Antibody	P01042	H	WB,ELISA
EPM12348	Kininogen 1 Monoclonal Antibody	P01042	H;	ELISA,WB,IHC
ESAP10940	AMBP Polyclonal Antibody	P02760	H	ELISA WB IHC
EAP1310	KLKB1 Polyclonal Antibody	P03952	H M R	WB IHC IF
ENC102	Cleaved-Plasma Kallikrein HC (R390) Polyclonal Antibody	P03952	H	WB,IHC,ELISA

Proteolysis and ubiquitin

Cat.No.	Product Name	Swissprot	Reactivity	Application
ENC099	Cleaved-MMP-1 22k (F100) Polyclonal Antibody	P03956	H	WB,ELISA
ESAP14082	MMP1 Polyclonal Antibody	P03956	H,M	ELISA WB IHC
ESAP16736	CSTB Polyclonal Antibody	P04080	H,M	ELISA WB IHC
ESAP14216	CAPNS1 Polyclonal Antibody	P04632	H,M,R	ELISA WB IHC
ESAP11637	SERPINB2 Polyclonal Antibody	P05120	H,M	ELISA IHC
ENT3569	PAI-1 Polyclonal Antibody	P05121	H,M,R	WB,IHC,ELISA
ENT3571	PAI-3 Polyclonal Antibody	P05154	H	WB,IHC,ELISA
EAP0317	ISG15 Polyclonal Antibody	P05161	H M	WB IHC
ENK5449	KLK1 Polyclonal Antibody	P06870	H	WB,ELISA
ESAP14551	SERPINE2 Polyclonal Antibody	P07093	H,M,R	ELISA WB IHC
ENT5551	PSA Polyclonal Antibody	P07288	H	WB ELISA
ENC037	Cleaved-Cathepsin D HC (L169) Polyclonal Antibody	P07339	H	WB,ELISA
ENC038	Cleaved-Cathepsin D LC (G65) Polyclonal Antibody	P07339	H,Mk	WB,ELISA
ENT0680	Cathepsin D Polyclonal Antibody	P07339	H,M	WB,IHC,ELISA
EAP0307	CAPN1 Polyclonal Antibody	P07384	H M R	WB IHC
EAP0375	PRSS1 Polyclonal Antibody	P07477	H M R	WB IHC
EAP3992	PRSS2 Polyclonal Antibody	P07478	H M	WB
ENT2798	MMP-2 Polyclonal Antibody	P08253	H,M,R,Mk	WB,IHC,IF,ELISA
ENC066	Cleaved-MMP-3 (F100) Polyclonal Antibody	P08254	H	WB,ELISA
ENT4465	MMP-3 Polyclonal Antibody	P08254	H,M,R	WB,IHC,IF,ELISA
EAP3985	SERPINF2 Polyclonal Antibody	P08697	H M R	WB
ESAP11297	CST2 Polyclonal Antibody	P09228	H	ELISA WB IHC
ENT2663	MMP-7 Polyclonal Antibody	P09237	H,M,R,Mk	WB,IHC,ELISA
ENC059	Cleaved-MMP-10 (F99) Polyclonal Antibody	P09238	H	WB,ELISA
ESAP16113	MMP10 Polyclonal Antibody	P09238	H,M	ELISA WB IHC

Proteolysis and ubiquitin

Cat.No.	Product Name	Swissprot	Reactivity	Application
EAP0868	UCHL1 Polyclonal Antibody	P09936	H M R	WB IHC ICC IF
EAP2395	FURIN Polyclonal Antibody	P09958	H M R	WB IHC
ENT4793	Ub Polyclonal Antibody	P0CG47/P0CG48/ P62979/P62987	H,M,R	WB,IHC,ELISA
EAP3310	Ubiquitin C Polyclonal Antibody	P0CG48	H M R	WB IHC ICC
ESAP12842	PGA3/PGA4/PGA5 Polyclonal Antibody	P0DJD8/P0DJD7/ P0DJD9	H	ELISA WB IHC
ESAP16493	ACR Polyclonal Antibody	P10323	H	ELISA WB IHC
ESAP16521	ACE Polyclonal Antibody	P12821	H,M,R	ELISA WB IHC
ESAP12987	APEH Polyclonal Antibody	P13798	H,M,R	ELISA WB IHC
EAP0517	IDE Polyclonal Antibody	P14735	H M R	WB IHC IF
ENT1892	MMP-9 Polyclonal Antibody	P14780	H	WB,IHC,IF,ELISA
ENT1089	CPN cat Polyclonal Antibody	P15169	H	WB,ELISA
EAP4067	UCHL3 Polyclonal Antibody	P15374	H M R	WB IHC
EAP2437	GNS Polyclonal Antibody	P15586	H M R	WB
ENT4659	TIMP-2 Polyclonal Antibody	P16035	H,M,R	WB,IHC,IF,ELISA
EAP3028	CAPN2 Polyclonal Antibody	P17655	H M R	WB
ENC094	Cleaved-ITI-H2 (D702) Polyclonal Antibody	P19823	H	WB,ELISA
ESAP13592	ITIH1 Polyclonal Antibody	P19827	H,M	ELISA IHC
EAP3979	PI3 Polyclonal Antibody	P19957	H	WB IHC
ESAP12724	KLK2 Polyclonal Antibody	P20151	H	ELISA WB IHC
EAP0194	PSMB1 Polyclonal Antibody	P20618	H M R	WB IHC IF
ESAP11186	CAST Polyclonal Antibody	P20810	H	ELISA WB IHC
EPM12319	Iduronate 2 sulfatase Monoclonal Antibody	P22304	H;	ELISA,WB,IHC,IF
ENK5493	UBA1 Polyclonal Antibody	P22314	H,M,R	WB,ELISA
ENT0692	Cbl Polyclonal Antibody	P22681	H,M,R	WB,IHC,ELISA
ESAP12226	CBL (phospho-Tyr700) Polyclonal Antibody	P22681	H	WB IHC IF

Proteolysis and ubiquitin

Cat.No.	Product Name	Swissprot	Reactivity	Application
ENT2800	MMP-8 Polyclonal Antibody	P22894	H,M,R	WB,IHC,ELISA
ENT2794	MMP-11 Polyclonal Antibody	P24347	H,M,R	WB,IHC,IF,ELISA
EAP1000	PSMA1 Polyclonal Antibody	P25786	H M R	WB IHC IF
EAP0986	PSMA2 Polyclonal Antibody	P25787	H M R	WB IHC IF
EAP0378	PSMA3 Polyclonal Antibody	P25788	H M R	WB IHC IF
ENP0396	Phospho-20S Proteasome α 3 (S250) Polyclonal Antibody	P25788	H,M,R	WB,IHC,ELISA
EAP0992	PSMA4 Polyclonal Antibody	P25789	H M R	WB IHC IF
EAP3813	DPP4 Polyclonal Antibody	P27487	H M R	WB
EAP2330	PSMB8 Polyclonal Antibody	P28062	H R	WB IHC IF
EAP0609	PSMB9 Polyclonal Antibody	P28065	H M R	WB IHC IF
EAP1582	PSMA5 Polyclonal Antibody	P28066	H M R	WB IHC IF
EAP1547	PSMB4 Polyclonal Antibody	P28070	H M R	WB IHC IF
EAP0740	PSMB5 Polyclonal Antibody	P28074	H M R	WB IHC IF
EAP2702	TPP2 Polyclonal Antibody	P29144	H M R	WB IHC IF
ESAP11562	SERPINB3 Polyclonal Antibody	P29508	H	ELISA WB
EAP3980	SERPINA4 Polyclonal Antibody	P29622	H	WB
EAP2595	SERPINB1 Polyclonal Antibody	P30740	H M R	WB IHC IF
ENT5219	Lipocalin-1 Polyclonal Antibody	P31025	H	WB,ELISA
EAP1411	GALNS Polyclonal Antibody	P34059	H M R	WB
EAP3981	SERPINB6 Polyclonal Antibody	P35237	H	WB
ESAP11576	PSMC2 Polyclonal Antibody	P35998	H,M,R	ELISA WB IHC
ENT0519	BRCA1 Polyclonal Antibody	P38398	H,R	WB,IHC,IF,ELISA
ESAP12166	BRCA1 (Phospho-Ser1423) Polyclonal Antibody	P38398	H	WB IHC
EAP2518	PSMB10 Polyclonal Antibody	P40306	H M R	WB IHC IF
EAP2121	USP8 Polyclonal Antibody	P40818	H M	WB IHC IF

Proteolysis and ubiquitin

Cat.No.	Product Name	Swissprot	Reactivity	Application
ENT4797	UBE1L Polyclonal Antibody	P41226	H	WB,IHC,ELISA
ESAP10697	PRCP Polyclonal Antibody	P42785	H,M	ELISA WB IHC
EAP0618	CTSK Polyclonal Antibody	P43235	H M R	WB
EAP0987	PSMC4 Polyclonal Antibody	P43686	H M R	WB IHC IF
ENT2796	MMP-13 Polyclonal Antibody	P45452	H	WB,IHC,IF,ELISA
EPM12695	USP5 Monoclonal Antibody	P45974	H;	ELISA,WB
EAP3178	NEDD4 Polyclonal Antibody	P46934	H M R Mk	WB IHC
ENT4006	Rap1GAP Polyclonal Antibody	P47736	H,M	WB,IHC,ELISA
ESAP11262	CPA2 Polyclonal Antibody	P48052	H,M,R	ELISA WB IHC
ENT5159	TFPI-2 Polyclonal Antibody	P48307	H	WB,ELISA
EAP2064	PSMD8 Polyclonal Antibody	P48556	H M R	WB IHC IF
ENT4220	SCCA2 Polyclonal Antibody	P48594	H	WB,ELISA
ENT5081	UBE2A/B Polyclonal Antibody	P49459/P63146	H,M,R	WB,ELISA
EAP1427	PSMB2 Polyclonal Antibody	P49721	H M R	WB IHC IF
ESAP14447	KLK7 Polyclonal Antibody	P49862	H,M	ELISA WB IHC
EAP1022	MMP14 Polyclonal Antibody	P50281	H M R	WB IHC
ENC061	Cleaved-MMP-14 (Y112) Polyclonal Antibody	P50281	H,M,R	WB,ELISA
ESAP15688	SERPINB8 Polyclonal Antibody	P50452	H	ELISA IHC
EAP2679	SERPINB9 Polyclonal Antibody	P50453	H	WB IHC IF
ENT4796	UBCE7IP4 Polyclonal Antibody	P50876	H,M	WB,ELISA
ENC062	Cleaved-MMP-15 (Y132) Polyclonal Antibody	P51511	H,Mk	WB,ELISA
ESAP14489	MMP15 Polyclonal Antibody	P51511	H,M	ELISA WB
ENT2912	MMP-16 Polyclonal Antibody	P51512	H,M,R	WB,IHC,ELISA
EAP1341	PSMD7 Polyclonal Antibody	P51665	H M R	WB IHC IF
EAP0726	UBE2D1 Polyclonal Antibody	P51668	H M R	WB

Proteolysis and ubiquitin

Cat.No.	Product Name	Swissprot	Reactivity	Application
ENT4828	USP11 Polyclonal Antibody	P51784	H,M,R	WB,ELISA
ENC035	Cleaved-Cathepsin C HC (R394) Polyclonal Antibody	P53634	H	WB,ELISA
ESAP13361	CTSC Polyclonal Antibody	P53634	H	ELISA WB IHC
EPM12451	PSMD4 Monoclonal Antibody	P55036	H;	ELISA,WB,IF,IHC
EAP3467	BACE1 Polyclonal Antibody	P56817	H M R	WB
ENT4682	TMPRSS3 Polyclonal Antibody	P57727	H,M	WB,IHC,IF,ELISA
EAP0925	PSMA6 Polyclonal Antibody	P60900	H M R	WB IHC IF
EAP2126	COPS2 Polyclonal Antibody	P61201	H M R	WB IHC IF
EAP0074	PSME3 Polyclonal Antibody	P61289	H M R	WB IHC IF
EAP1042	SUMO2 Polyclonal Antibody	P61956	H M R	WB IHC IF
ENC075	Cleaved-SUMO-2/3 (G93) Polyclonal Antibody	P61956	H,M,R	WB,ELISA
ESAP11668	PSMC1 Polyclonal Antibody	P62191	H,M,R	ELISA WB IHC
EAP0446	PSMC5 Polyclonal Antibody	P62195	H M R	WB IHC IF
EAP2334	UBE2H Polyclonal Antibody	P62256	H M R	WB IHC IF
EAP1360	PSMC6 Polyclonal Antibody	P62333	H M R	WB IHC
EAP0651	RBX1 Polyclonal Antibody	P62877	H M R	WB IHC IF
EAP0774	RPS27A Polyclonal Antibody	P62979	H M	WB
ENK048	Acetyl-Ub (K27) Polyclonal Antibody	P62987/P62979/ P0CG47/P0CG48	H, M, R	WB,ELISA
ENK054	Acetyl-Ub (K29) Polyclonal Antibody	P62987/P62979/ P0CG47/P0CG48	H, M, R	WB,ELISA
ENK055	Acetyl-Ub (K33) Polyclonal Antibody	P62987/P62979/ P0CG47/P0CG48	H, M, R	WB,ELISA
ENK056	Acetyl-Ub (K48) Polyclonal Antibody	P62987/P62979/ P0CG47/P0CG48	H, M, R	WB,ELISA
ENK5432	Ub Polyclonal Antibody	P62987/P62979/ P0CG47/P0CG48	H,M,R	WB,ELISA
EAP2627	UBE2B Polyclonal Antibody	P63146	H M R	WB IHC
ENT4470	SUMO-1 Polyclonal Antibody	P63165	H,M,R	WB,IHC,IF,ELISA
ENT4310	Skp1 p19 Polyclonal Antibody	P63208	H,M,R,Mk	WB,IHC,ELISA

Proteolysis and ubiquitin

Cat.No.	Product Name	Swissprot	Reactivity	Application
EAP0930	UBE2I Polyclonal Antibody	P63279	H M R	WB IHC IF
EAP3311	UBE2L3 Polyclonal Antibody	P68036	H M R	WB IHC
EAP3286	ADAM17 Polyclonal Antibody	P78536	H R	WB
EAP3312	UBE3A Polyclonal Antibody	Q05086	H M R	WB IHC
EAP1343	PSME1 Polyclonal Antibody	Q06323	H M R	WB IHC IF
EAP3456	PMPCA Polyclonal Antibody	Q10713	H M R	WB
ENT3934	Rab 40B Polyclonal Antibody	Q12829	H	WB,ELISA
ENT0791	Cdc20 Polyclonal Antibody	Q12834	H,M,R	WB,IHC,ELISA
ESAP10818	TRIM32 Polyclonal Antibody	Q13049	H,M	ELISA WB IHC
EAP2034	GPS1 Polyclonal Antibody	Q13098	H M R	WB IHC IF
ESAP14100	AIMP2 Polyclonal Antibody	Q13155	H,M,R	ELISA WB IHC
EAP0766	CBLB Polyclonal Antibody	Q13191	H M R	WB IHC
ENT3889	PSMD2 Polyclonal Antibody	Q13200	H,M,R	WB,IHC,IF,ELISA
ENT4311	Skp2 p45 Polyclonal Antibody	Q13309	H	WB,IHC,IF,ELISA
EAP1367	ADAM9 Polyclonal Antibody	Q13443	H M R	WB IHC IF
ESAP10892	ADAM15 Polyclonal Antibody	Q13444	H,M,R	ELISA WB IHC
ESAP10980	NAE1 Polyclonal Antibody	Q13564	H,M,R	ELISA IHC
ESAP12526	CUL4A Polyclonal Antibody	Q13619	H,M	ELISA WB IHC
ESAP16732	CUL4B Polyclonal Antibody	Q13620	H,M	ELISA IHC
EAP3736	BLMH Polyclonal Antibody	Q13867	H M R	WB IHC IF
ENT5080	UBE4A Polyclonal Antibody	Q14139	H,M,R	WB,ELISA
ESAP13983	TRIM25 Polyclonal Antibody	Q14258	H	ELISA IHC
ESAP16845	HLTF Polyclonal Antibody	Q14527	H	ELISA IHC
EAP2452	USP10 Polyclonal Antibody	Q14694	H M R	WB IHC IF
EAP2118	MBTPS1 Polyclonal Antibody	Q14703	H M R	WB IHC IF

Proteolysis and ubiquitin

Cat.No.	Product Name	Swissprot	Reactivity	Application
ESAP10393	CUL7 Polyclonal Antibody	Q14999	H,R	ELISA IHC
ESAP16396	PSMD6 Polyclonal Antibody	Q15008	H,M	ELISA WB IHC
EAP3352	HERC3 Polyclonal Antibody	Q15034	H M	WB
ENT2593	LRRC41 Polyclonal Antibody	Q15345	H,M,R	WB,IHC,ELISA
EAP2721	UBE3C Polyclonal Antibody	Q15386	H	WB IHC IF
EAP2097	UBE2V2 Polyclonal Antibody	Q15819	H M R	WB IHC IF
ESAP15221	CST6 Polyclonal Antibody	Q15828	H	ELISA IHC
ENT3026	Neddylin Polyclonal Antibody	Q15843	H,M,R,Mk	WB,IHC,ELISA
ESAP10710	PSMD5 Polyclonal Antibody	Q16401	H,M	ELISA WB
ESAP17098	PRSS8 Polyclonal Antibody	Q16651	H,M,R	ELISA IHC
EAP2409	PCGF3 Polyclonal Antibody	Q3KNV8	H M R	WB
EAP4167	PITRM1 Polyclonal Antibody	Q5JRX3	H M R	WB IHC
ESAP15656	RNF20 Polyclonal Antibody	Q5VTR2	H,M	ELISA WB IHC
ENT0141	AGBL4 Polyclonal Antibody	Q5VU57	H	WB,ELISA
ENT3476	OTUD2 Polyclonal Antibody	Q5VVQ6	H	WB,ELISA
EAP3659	UBE2U Polyclonal Antibody	Q5VVX9	H M	WB IHC
EAP3589	RNF123 Polyclonal Antibody	Q5XPI4	H M	WB
ESAP13486	FBXO31 Polyclonal Antibody	Q5XUX0	H,M,R	ELISA IHC
EAP0677	ATG16L1 Polyclonal Antibody	Q676U5	H M R	WB IHC IF IP
ESAP17133	RNF43 Polyclonal Antibody	Q68DV7	H	ELISA WB
EAP1215	SUMO4 Polyclonal Antibody	Q6EEV6	H M R	WB IHC IF
ESAP17132	TRIM40 Polyclonal Antibody	Q6P9F5	H	ELISA WB IHC
EAP3637	LRSAM1 Polyclonal Antibody	Q6UWE0	H M R	WB
EAP2186	DPP8 Polyclonal Antibody	Q6V1X1	H M R	WB IHC IF
EAP1903	NHLRC1 Polyclonal Antibody	Q6VVB1	H	WB IHC IF

Proteolysis and ubiquitin

Cat.No.	Product Name	Swissprot	Reactivity	Application
ENT4834	USP30 Polyclonal Antibody	Q70CQ3	H,M,R	WB,ELISA
ENT4844	USP50 Polyclonal Antibody	Q70EL3	H,M	WB,IHC,ELISA
ENT4840	USP43 Polyclonal Antibody	Q70EL4	H,M	WB,ELISA
EAP2353	UBE2R2 Polyclonal Antibody	Q712K3	H M R	WB IHC IF
EAP2155	COPS6 Polyclonal Antibody	Q7L5N1	H M R	WB IF
ESAP15023	ATG9A Polyclonal Antibody	Q7Z3C6	H,R	ELISA WB IHC
EAP3633	ATG4D Polyclonal Antibody	Q86TL0	H M R	WB
ESAP13868	SERPINA11 Polyclonal Antibody	Q86U17	H,M,R	ELISA IHC
ENT2644	MARCH3 Polyclonal Antibody	Q86UD3	H,M,R,Mk	WB,IHC,ELISA
ENT3129	NIPA Polyclonal Antibody	Q86WB0	H,M,R,Mk	WB,IF,ELISA
ESAP13278	SERPINA9 Polyclonal Antibody	Q86WD7	H	ELISA WB IHC
ENT4154	RNF130 Polyclonal Antibody	Q86XS8	H,M,R	WB,ELISA
ESAP16750	DTX1 Polyclonal Antibody	Q86Y01	H,M	ELISA IHC
EAP0977	SIAH1 Polyclonal Antibody	Q8IUQ4	H M R	WB IHC IF
ENT4296	Siah-1/2 Polyclonal Antibody	Q8IUQ4/O43255	H,M,R	WB,IHC,IF,ELISA
ENT4808	Ubr1 Polyclonal Antibody	Q8IWW7	H,M	WB,IHC,ELISA
ESAP16838	HACE1 Polyclonal Antibody	Q8IYU2	H,M,R	ELISA IHC
ESAP16111	MMP21 Polyclonal Antibody	Q8N119	H,M	ELISA IHC
EAP2317	UBE2J2 Polyclonal Antibody	Q8N2K1	H M R	WB IHC IF
ESAP16416	SFRP1 Polyclonal Antibody	Q8N474	H,M	ELISA IHC
ENT4837	USP38 Polyclonal Antibody	Q8NB14	H	WB,ELISA
ESAP17057	PCSK9 Polyclonal Antibody	Q8NBP7	H	ELISA WB
ESAP14817	AGBL5 Polyclonal Antibody	Q8NDL9	H	ELISA IHC
ESAP14818	AGBL3 Polyclonal Antibody	Q8NEM8	H,M	ELISA WB IHC
EAP3484	FBXO22 Polyclonal Antibody	Q8NEZ5	H	WB

Proteolysis and ubiquitin

Cat.No.	Product Name	Swissprot	Reactivity	Application
ENT3871	PRSS33 Polyclonal Antibody	Q8NF86	H	WB,IHC,ELISA
EAP3581	WDR48 Polyclonal Antibody	Q8TAF3	H M R	WB IHC
EAP2749	LNX1 Polyclonal Antibody	Q8TBB1	H	IHC IF
ENT0110	ADAM32 Polyclonal Antibody	Q8TC27	H	WB,ELISA
ESAP16498	ADAMTS17 Polyclonal Antibody	Q8TE56	H,M	ELISA WB IHC
ESAP16497	ADAMTS16 Polyclonal Antibody	Q8TE57	H,M	ELISA WB
ENT0116	ADAMTS-19 Polyclonal Antibody	Q8TE59	H,M	WB,ELISA
ESAP14803	ADAMTS18 Polyclonal Antibody	Q8TE60	H,M	ELISA IHC
EAP2208	UBASH3B Polyclonal Antibody	Q8TF42	H M R	WB IHC IF
ESAP13822	RNF139 Polyclonal Antibody	Q8WU17	H	ELISA IHC
ENT1081	CPA5 Polyclonal Antibody	Q8WXQ8	H,M	WB,ELISA
ESAP13195	ADAMTS14 Polyclonal Antibody	Q8WXS8	H	ELISA IHC
ENT2939	MYLIP Polyclonal Antibody	Q8WY64	H,M,R	WB,IHC,ELISA
ESAP13247	ATG4A Polyclonal Antibody	Q8WYN0	H	ELISA WB IHC
EAP1458	PSMF1 Polyclonal Antibody	Q92530	H M R	WB IHC
ESAP15462	KLK6 Polyclonal Antibody	Q92876	H	ELISA WB IHC
ENT4149	Rit1 Polyclonal Antibody	Q92963	H,M	WB,ELISA
EPM12534	USP13 Monoclonal Antibody	Q92995	H;	ELISA,WB,IHC,IF
EAP1354	CUL5 Polyclonal Antibody	Q93034	H M R	WB IHC IF
EAP3553	FBXW7 Polyclonal Antibody	Q969H0	H M R	WB IHC IF
EAP3611	RNF34 Polyclonal Antibody	Q969K3	H	WB
EAP4351	UBE2F Polyclonal Antibody	Q969M7	H M R	WB
EAP1095	FBXO32 Polyclonal Antibody	Q969P5	H M R	WB
ESAP13024	TRIM63 Polyclonal Antibody	Q969Q1	H,M	ELISA WB IHC
ENT3475	OTUB2 Polyclonal Antibody	Q96DC9	H,M,R	WB,IHC,ELISA

Proteolysis and ubiquitin

Cat.No.	Product Name	Swissprot	Reactivity	Application
ESAP14934	ATG4C Polyclonal Antibody	Q96DT6	H,M	ELISA WB IHC
EAP3544	RNF31 Polyclonal Antibody	Q96EP0	H	WB
EAP0338	SCRN2 Polyclonal Antibody	Q96FV2	H M R	WB
ESAP15577	OTUB1 Polyclonal Antibody	Q96FW1	H,M,R	ELISA WB IHC
ENT4239	SEN5 Polyclonal Antibody	Q96HI0	H,M,Mk	WB,IHC,ELISA
ESAP11647	PDLIM2 Polyclonal Antibody	Q96JY6	H,M	ELISA WB IHC
ENT3194	NSE2 Polyclonal Antibody	Q96KN1	H	WB,IHC,ELISA
ENT4242	SEN8 Polyclonal Antibody	Q96LD8	H,M,R	WB,IHC,ELISA
ESAP16253	AGBL1 Polyclonal Antibody	Q96MI9	H,M	ELISA IHC
ENT4258	Serpin B12 Polyclonal Antibody	Q96P63	H	WB,ELISA
ESAP10683	RCHY1 Polyclonal Antibody	Q96PM5	H,M	ELISA WB IHC
EAP3460	NEDD4L Polyclonal Antibody	Q96PU5	H M R	WB IHC
ESAP14964	PSMB7 Polyclonal Antibody	Q99436	H,M,R	ELISA WB IHC
EAP1467	RNF2 Polyclonal Antibody	Q99496	H M R	WB IHC IF
ENT2797	MMP-19 Polyclonal Antibody	Q99542	H,M	WB,IHC,ELISA
ENT4661	TIMP-4 Polyclonal Antibody	Q99727	H,M,R	WB,IHC,ELISA
ENT0452	BARD1 Polyclonal Antibody	Q99728	H	WB,IHC,ELISA
ESAP13817	RNF5 Polyclonal Antibody	Q99942	H,M,R	ELISA WB IHC
ESAP10893	ADAM2 Polyclonal Antibody	Q99965	H	ELISA WB IHC
ENT4241	SEN7 Polyclonal Antibody	Q9BQF6	H,M	WB,IHC,ELISA
ENT3053	Neuralized-2 Polyclonal Antibody	Q9BR09	H,M	WB,IHC,ELISA
ESAP14463	LXN Polyclonal Antibody	Q9BS40	H,M,R	ELISA WB IHC
ENT1866	GBDR1 Polyclonal Antibody	Q9BSL1	H	WB,IHC,ELISA
EAP4323	USP26 Polyclonal Antibody	Q9BXU7	H	WB IHC IF
ENT0232	ANKRD30A Polyclonal Antibody	Q9BXX3	H	WB,IHC,ELISA

Proteolysis and ubiquitin

Cat.No.	Product Name	Swissprot	Reactivity	Application
ESAP10960	ACE2 Polyclonal Antibody	Q9BYF1	H	ELISA IHC
ESAP13824	TRIM34 Polyclonal Antibody	Q9BYJ4	H	ELISA IHC
EAP4317	ADAM33 Polyclonal Antibody	Q9BZ11	H	WB
EAP3590	UBE2O Polyclonal Antibody	Q9C0C9	H M	WB
ENT4795	Uba5 Polyclonal Antibody	Q9GZZ9	H,M,R	WB,IHC,ELISA
ESAP14880	ATG10 Polyclonal Antibody	Q9H0Y0	H,M	ELISA WB IHC
ENT0260	APC1 Polyclonal Antibody	Q9H1A4	H,M	WB,IF,ELISA
ESAP14491	MMP28 Polyclonal Antibody	Q9H239	H,M	ELISA WB IHC
ESAP14448	KLK15 Polyclonal Antibody	Q9H2R5	H	ELISA WB IHC
ESAP12783	MMP27 Polyclonal Antibody	Q9H306	H,M	ELISA WB IHC
ESAP13862	SEN3 Polyclonal Antibody	Q9H4L4	H,M	ELISA IHC
ESAP11125	ASB8 Polyclonal Antibody	Q9H765	H,M,R	ELISA IHC
EAP2259	UBE2Z Polyclonal Antibody	Q9H832	H M R	WB IHC IF
ENT4839	USP42 Polyclonal Antibody	Q9H9J4	H,M,R	WB,ELISA
ESAP11711	SCPEP1 Polyclonal Antibody	Q9HB40	H,M,R	ELISA WB IHC
ENT4237	SEN2 Polyclonal Antibody	Q9HC62	H,M,R	WB,IHC,ELISA
ENT0614	Calpain 10 Polyclonal Antibody	Q9HC96	H	WB,ELISA
ESAP12971	SMURF1 Polyclonal Antibody	Q9HCE7	H,M	ELISA IHC
ESAP16112	MMP25 Polyclonal Antibody	Q9NPA2	H	ELISA WB IHC
ENT4800	UBE2T Polyclonal Antibody	Q9NPD8	H,M	WB,ELISA
EAP2421	OSGEP Polyclonal Antibody	Q9NPF4	H M R	WB IHC IF
ENT2554	LEKTI Polyclonal Antibody	Q9NQ38	H	WB,IHC,ELISA
ESAP16733	CYLD Polyclonal Antibody	Q9NQC7	H,M,R	ELISA IHC
ESAP12782	MMP26 Polyclonal Antibody	Q9NRE1	H	ELISA WB
EAP1362	RAD18 Polyclonal Antibody	Q9NS91	H M R	WB IHC IF

Proteolysis and ubiquitin

Cat.No.	Product Name	Swissprot	Reactivity	Application
ESAP14881	ATG3 Polyclonal Antibody	Q9NT62	H,M,R	ELISA WB IHC
ENT4838	USP40 Polyclonal Antibody	Q9NVE5	H	WB,IHC,ELISA
EAP2139	DPP3 Polyclonal Antibody	Q9NY33	H M R	WB IHC
ENT1606	ERAP1 Polyclonal Antibody	Q9NZ08	H,M,R	WB,IHC,IF,ELISA
ESAP13616	KLK14 Polyclonal Antibody	Q9P0G3	H,M	ELISA WB IHC
EAP4256	ADAM22 Polyclonal Antibody	Q9P0K1	H M R	WB
ENT4236	SEN1 Polyclonal Antibody	Q9P0U3	H,M	WB,IHC,ELISA
ENT3027	NEDL2 Polyclonal Antibody	Q9P2P5	H	WB,ELISA
ENT4207	SAE1 Polyclonal Antibody	Q9UBE0	H,M,R	WB,IHC,IF,ELISA
ESAP15659	RNF14 Polyclonal Antibody	Q9UBS8	H,M	ELISA WB IHC
ENT4794	UBA2 Polyclonal Antibody	Q9UBT2	H	WB,IHC,IF,ELISA
ENC055	Cleaved-KLK11 (I54) Polyclonal Antibody	Q9UBX7	H	WB,ELISA
ESAP15463	KLK11 Polyclonal Antibody	Q9UBX7	H	ELISA IHC
ENT0112	ADAMTS-1 Polyclonal Antibody	Q9UHI8	H	WB,ELISA
ENT5125	DPP7 Polyclonal Antibody	Q9UHL4	H	WB,ELISA
EAP4234	USP25 Polyclonal Antibody	Q9UHP3	H M R	WB IHC
ESAP17317	PRSS50 Polyclonal Antibody	Q9UI38	H	ELISA WB IHC
ESAP12954	ANAPC4 Polyclonal Antibody	Q9UJX5	H,M	ELISA WB IHC
EAP3482	FBXO2 Polyclonal Antibody	Q9UK22	M R	WB
EAP2180	SERPINA10 Polyclonal Antibody	Q9UK55	H	WB IHC IF
EAP3483	FBXL5 Polyclonal Antibody	Q9UKA1	H M R	WB
EAP3459	FBXW11 Polyclonal Antibody	Q9UKB1	H M R	WB IHC IF
ESAP13194	ADAM29 Polyclonal Antibody	Q9UKF5	H	ELISA IHC
ESAP10896	ADAM21 Polyclonal Antibody	Q9UKJ8	H	ELISA IHC
ESAP12925	ADAMTS6 Polyclonal Antibody	Q9UKP5	H	ELISA IHC

Proteolysis and ubiquitin

Cat.No.	Product Name	Swissprot	Reactivity	Application
ESAP13193	ADAM28 Polyclonal Antibody	Q9UKQ2	H	ELISA IHC
ESAP11526	KLK13 Polyclonal Antibody	Q9UKR3	H	ELISA IHC
EAP1466	PSME2 Polyclonal Antibody	Q9UL46	H M R	WB IHC
ENC063	Cleaved-MMP-17 (Q129) Polyclonal Antibody	Q9ULZ9	H	WB,ELISA
ESAP12775	MMP17 Polyclonal Antibody	Q9ULZ9	H	ELISA WB
EAP2522	FZR1 Polyclonal Antibody	Q9UM11	H M R	WB IHC IF
ESAP10971	ANAPC10 Polyclonal Antibody	Q9UM13	H,M	ELISA IHC
ENT0615	Calpain 11 Polyclonal Antibody	Q9UMQ6	H	WB,ELISA
ESAP14954	UBQLN1 Polyclonal Antibody	Q9UMX0	H,M,R	ELISA WB IHC
ESAP12455	ADAMTS5 Polyclonal Antibody	Q9UNA0	H,M,R	ELISA WB IHC
EAP2065	PSMD13 Polyclonal Antibody	Q9UNM6	H M R	WB IHC IF
ESAP17283	TRIM35 Polyclonal Antibody	Q9UPQ4	H	ELISA WB IHC
EAP0536	BTRC Polyclonal Antibody	Q9Y297	H M R	WB IHC IF
EPM12229	CNPY2, MSAP Monoclonal Antibody	Q9Y2B0	H,M,R;	ELISA,WB,IF
EAP3525	UBE2D4 Polyclonal Antibody	Q9Y2X8	H M R	WB
ESAP12725	KLK5 Polyclonal Antibody	Q9Y337	H,M	ELISA WB IHC
ESAP15657	RNF11 Polyclonal Antibody	Q9Y3C5	H,M	ELISA IHC
EAP2414	FBXO7 Polyclonal Antibody	Q9Y3I1	H M R	WB IHC IF
ENT0394	Atg4b Polyclonal Antibody	Q9Y4P1	H,M	WB,IHC,ELISA
ESAP15048	ASB4 Polyclonal Antibody	Q9Y574	H,M	ELISA IHC
ENT3206	NUB1 Polyclonal Antibody	Q9Y5A7	H,M,Mk	WB,IHC,ELISA
ESAP14446	KLK4 Polyclonal Antibody	Q9Y5K2	H	ELISA IHC
EAP3520	UCHL5 Polyclonal Antibody	Q9Y5K5	H M R	WB IHC IF
ENT4831	USP16 Polyclonal Antibody	Q9Y5T5	H,M,R	WB,ELISA
EAP2543	ST14 Polyclonal Antibody	Q9Y5Y6	H M R	WB IHC
ESAP14863	AUP1 Polyclonal Antibody	Q9Y679	H,M,R	ELISA WB IHC
ESAP10320	CAPN7 Polyclonal Antibody	Q9Y6W3	H,M	ELISA WB IHC
EAP2145	PIAS3 Polyclonal Antibody	Q9Y6X2	H M R	WB IHC IF



Elabscience®

Phone: 240-252-7368(USA) 240-252-7376(USA)

Fax: 240-252-7376

Email: techsupport@elabscience.com

Website: www.elabscience.com

Office Location: P.O. Box 5993 Bethesda, MD 20824