



**Elabscience®**  
[www.elabscience.com](http://www.elabscience.com)

**ELISA Kits for  
Cell Biology Research**

## • Cell biology

Cell biology, formerly called cytology, is a branch of biology that studies the different structures and functions of the cell and focuses mainly on the idea of the cell as the basic unit of life. Cell biology explains the structure, organization of the organelles they contain, their physiological properties, metabolic processes, signaling pathways, life cycle, and interactions with their environment. This is done both on a microscopic and molecular level as it encompasses prokaryotic cells and eukaryotic cells. Knowing the components of cells and how cells work is fundamental to all biological sciences, and it is also essential for research in bio-medical fields such as cancer and other diseases. Research in cell biology is closely related to genetics, biochemistry, molecular biology, immunology, and developmental biology.

There are several main subfields within cell biology. One is the study of cell energy and the biochemical mechanisms that support cell metabolism. Another subfield of cell biology concerns the genetics of the cell and its tight interconnection with the proteins controlling the release of genetic information from the nucleus to the cell cytoplasm. Yet another subfield focuses on the structure of cell components, known as subcellular compartments. Cutting across many biological disciplines is the additional subfield of cell biology, concerned with cell communication and signaling, concentrating on the messages that cells give to and receive from other cells and themselves. And finally, there is the subfield primarily concerned with the cell cycle, the rotation of phases beginning and ending with cell division and focused on different periods of growth and DNA replication. Many cell biologists dwell at the intersection of two or more of these subfields as our ability to analyze cells in more complex ways expands.



# Apoptosis

Cat. No.	Product Name	Detection Range	Sensitivity	Test Method
E-EL-H0017	Human CASP3 (Caspase 3) ELISA Kit	0.31--20ng/mL	0.19ng/mL	Sandwich
E-EL-H0034	Human FcεRII/CD23 (Receptor II for the Fc Region of Immunoglobulin E) ELISA Kit	31.25--2000pg/mL	18.75pg/mL	Sandwich
E-EL-H0038	Human CLU (Clusterin) ELISA Kit	3.13--200ng/mL	1.88ng/mL	Sandwich
E-EL-H0056	Human Cyt-C (Cytochrome C) ELISA Kit	78.13--5000pg/mL	46.88pg/mL	Sandwich
E-EL-H0067	Human FAS/CD95 (Factor Related Apoptosis) ELISA Kit	31.25--2000pg/mL	18.75pg/mL	Sandwich
E-EL-H0068	Human FASL/TNFSF6 (Factor Related Apoptosis Ligand) ELISA Kit	15.63--1000pg/mL	9.38pg/mL	Sandwich
E-EL-H0082	Human sgp130 (soluble Glucoprotein 130) ELISA Kit	0.25--16ng/mL	0.15ng/mL	Sandwich
E-EL-H0087	Human IGFBP-3 (Insulin Like Growth Factor Binding Protein 3) ELISA Kit	0.78--50ng/mL	0.47ng/mL	Sandwich
E-EL-H0096	Human NGAL (Neutrophil Gelatinase Associated Lipocalin) ELISA Kit	0.16--10ng/mL	0.09ng/mL	Sandwich
E-EL-H0257	Human ACTN2 (Actinin Alpha 2) ELISA Kit	0.31--20ng/mL	0.19ng/mL	Sandwich
E-EL-H0422	Human ANXA5 (Annexin A5) ELISA Kit	0.31--20ng/mL	0.19ng/mL	Sandwich



Cat. No	Product Name	Detection Range	Sensitivity	Test Method
E-EL-H0479	Human AIF (Apoptosis Inducing Factor) ELISA Kit	0.16--10ng/mL	0.09ng/mL	Sandwich
E-EL-H0513	Human MAPK14 (Mitogen Activated Protein Kinase 14) ELISA Kit	1.56--100ng/mL	0.94ng/mL	Sandwich
E-EL-H0562	Human Bax (Bcl-2 Associated X Protein) ELISA Kit	0.78--50ng/mL	0.47ng/mL	Sandwich
E-EL-H0659	Human CASP8 (Caspase 8) ELISA Kit	0.16--10ng/mL	0.09ng/mL	Sandwich
E-EL-H0663	Human CASP 9 (Caspase 9) ELISA Kit	1.56--100ng/mL	0.94ng/mL	Sandwich
E-EL-H0671	Human CTSL (Cathepsin L) ELISA Kit	62.5--4000pg/mL	37.5pg/mL	Sandwich
E-EL-H0910	Human TP53 (Tumor Protein p53) ELISA Kit	78.13--5000pg/mL	46.88pg/mL	Sandwich
E-EL-H0965	Human $\alpha$ 1-AT (Alpha 1-Antitrypsin) ELISA Kit	3.13--200ng/mL	1.88ng/mL	Sandwich
E-EL-H1058	Human GAL7 (Galectin 7) ELISA Kit	125--8000pg/mL	75pg/mL	Sandwich
E-EL-H1546	Human SIRT1 (Sirtuin 1) ELISA Kit	0.31--20ng/mL	0.19ng/mL	Sandwich
E-EL-H1584	Human Surv (Survivin) ELISA Kit	31.25--2000pg/mL	18.75pg/mL	Sandwich
E-EL-H1593	Human TRAIL/TNFSF10 (Tumor Necrosis Factor Related Apoptosis Inducing Ligand) ELISA Kit	15.63--1000pg/mL	9.38pg/mL	Sandwich
E-EL-H1617	Human GzmB (Granzyme B) ELISA Kit	15.63--1000pg/mL	9.38pg/mL	Sandwich



Cat. No	Product Name	Detection Range	Sensitivity	Test Method
E-EL-H1634	Human FXN (Frataxin) ELISA Kit	23.44--1500pg/mL	14.06pg/mL	Sandwich
E-EL-H2086	Human ERK1 (Extracellular Signal Regulated Kinase 1) ELISA Kit	0.31--20ng/mL	0.19ng/mL	Sandwich
E-EL-H2087	Human ERK2 (Extracellular Signal Regulated Kinase 2) ELISA Kit	46.88--3000pg/mL	28.13pg/mL	Sandwich
E-EL-H2305	Human TACE (TNF $\alpha$ Converting Enzyme) ELISA Kit	62.5--4000pg/ml	37.5pg/ml	Sandwich
E-EL-H2312	Human TWEAK (Tumour Necrosis Factor Related Weak Inducer of Apoptosis) ELISA Kit	78.13--5000pg/mL	46.88pg/mL	Sandwich
E-EL-M0023	Mouse Cyt C (Cytochrome C) ELISA Kit	0.39--25ng/mL	0.23ng/mL	Sandwich
E-EL-M0028	Mouse FASL (Factor Related Apoptosis Ligand) ELISA Kit	31.25--2000pg/mL	18.75pg/mL	Sandwich
E-EL-M0035	Mouse IGFBP-3 (Insulin-like Growth Factor Binding Protein 3) ELISA Kit	62.5--4000pg/mL	37.5pg/mL	Sandwich
E-EL-M0063	Mouse CASP8 (Caspase 8) ELISA Kit	0.16--10ng/mL	0.09ng/mL	Sandwich
E-EL-M0099	Mouse ANXA5 (Annexin A5) ELISA Kit	0.16--10ng/mL	0.09ng/mL	Sandwich
E-EL-M0141	Mouse AIF (Apoptosis Inducing Factor) ELISA Kit	7.81--500pg/mL	4.69pg/mL	Sandwich
E-EL-M0178	Mouse Bax (Bcl-2 Associated X Protein) ELISA Kit	0.16--10ng/mL	0.09ng/mL	Sandwich
E-EL-M0238	Mouse CASP3 (Caspase 3) ELISA Kit	0.16--10ng/mL	0.09ng/mL	Sandwich



Cat. No	Product Name	Detection Range	Sensitivity	Test Method
E-EL-M0241	Mouse CASP9 (Caspase 9) ELISA Kit	0.16--10ng/mL	0.09ng/mL	Sandwich
E-EL-M0251	Mouse CTSL (Cathepsin L) ELISA Kit	31.25--2000pg/mL	18.75pg/mL	Sandwich
E-EL-M0303	Mouse CLU (Clusterin) ELISA Kit	2.5--160ng/mL	1.5ng/mL	Sandwich
E-EL-M0350	Mouse SIRT1 (NAD-dependent protein deacetylase sirtuin-1) ELISA Kit	0.16--10ng/mL	0.09ng/mL	Sandwich
E-EL-M0480	Mouse ERK1 (Extracellular Signal Regulated Kinase 1) ELISA Kit	78.13--5000pg/mL	46.88pg/mL	Sandwich
E-EL-M0481	Mouse ERK2 (Extracellular Signal Regulated Kinase 2) ELISA Kit	5.0--100ng/mL	1.0ng/mL	Sandwich
E-EL-M0484	Mouse FAS/CD95 (Factor Related Apoptosis) ELISA Kit	31.25--2000pg/mL	18.75pg/mL	Sandwich
E-EL-M0532	Mouse GAL7 (Galectin 7) ELISA Kit	0.16--10ng/mL	0.09ng/mL	Sandwich
E-EL-M0560	Mouse gp130 (Glucoprotein 130) ELISA Kit	125--8000pg/mL	75pg/mL	Sandwich
E-EL-M0594	Mouse Gzms-B (granzyme B) ELISA Kit	15.63--1000pg/mL	9.38pg/mL	Sandwich
E-EL-M0828	Mouse NGAL (Neutrophil Gelatinase Associated Lipocalin) ELISA Kit	39.06--2500pg/mL	23.44pg/mL	Sandwich
E-EL-M0876	Mouse MAPK14 (Mitogen Activated Protein Kinase 14) ELISA Kit	1.25--80ng/mL	0.75ng/mL	Sandwich
E-EL-M1084	Mouse TRAIL/TNFSF10 (Tumor Necrosis Factor Related Apoptosis Inducing Ligand) ELISA Kit	15.63--1000pg/mL	9.38pg/mL	Sandwich



Cat. No	Product Name	Detection Range	Sensitivity	Test Method
E-EL-M1215	Mouse TP53 (Tumor Protein 53) ELISA Kit	62.5--4000pg/mL	37.5pg/mL	Sandwich
E-EL-M2428	Mouse $\alpha$ 1-AT (Alpha 1-Antitrypsin) ELISA Kit	3.13--200ng/mL	1.88ng/mL	Sandwich
E-EL-M2432	Mouse Fc $\epsilon$ RII/CD23 (Receptor II for the Fc Region of Immunoglobulin E) ELISA Kit	31.25--2000pg/mL	18.75pg/mL	Sandwich
E-EL-M2648	Mouse sgp130(Soluble Glucoprotein 130)ELISA Kit	15.63--1000pg/mL	9.38pg/mL	Sandwich
E-EL-R0006	Rat Cyt-C (Cytochrome C) ELISA Kit	0.39--25ng/mL	0.23ng/mL	Sandwich
E-EL-R0098	Rat BAX (BCL-2 Associated X Protein) ELISA Kit	0.16--10ng/mL	0.09ng/mL	Sandwich
E-EL-R0160	Rat CASP3 (Caspase 3) ELISA Kit	0.31--20ng/mL	0.19ng/mL	Sandwich
E-EL-R0163	Rat CASP9 (Caspase 9) ELISA Kit	1.56--100ng/mL	0.94ng/mL	Sandwich
E-EL-R0173	Rat CTSL (Cathepsin L) ELISA Kit	0.63--40ng/mL	0.38ng/mL	Sandwich
E-EL-R0211	Rat JNK (C-Jun N-Terminal Kinases) ELISA Kit	7.81--500ng/mL	4.69ng/mL	Sandwich
E-EL-R0222	Rat CLU (Clusterin) ELISA Kit	1.56--100ng/mL	0.94ng/mL	Sandwich
E-EL-R0280	Rat CASP8 (Caspase 8) ELISA Kit	0.16--10ng/mL	0.09ng/mL	Sandwich
E-EL-R0372	Rat ERK1(Extracellular Signal Regulated Kinase 1) ELISA Kit	0.31--20ng/mL	0.19ng/mL	Sandwich



Cat. No	Product Name	Detection Range	Sensitivity	Test Method
E-EL-R0373	Rat FAS/CD95 (Factor Related Apoptosis) ELISA Kit	31.25--2000pg/mL	18.75pg/mL	Sandwich
E-EL-R0401	Rat GAL7 (Galectin 7) ELISA Kit	0.16--10ng/mL	0.09ng/mL	Sandwich
E-EL-R0421	Rat GITR (Glucocorticoid Induced Tumor Necrosis Factor Receptor) ELISA Kit	0.78--50ng/mL	0.47ng/mL	Sandwich
E-EL-R0427	Rat gp130 (Glucoprotein 130) ELISA Kit	0.16--10ng/mL	0.09ng/mL	Sandwich
E-EL-R0533	Rat IGFBP-3 (Insulin-Like Growth Factor Binding Protein 3) ELISA Kit	78.13--5000pg/mL	46.88pg/mL	Sandwich
E-EL-R0662	Rat NGAL (Neutrophil Gelatinase Associated Lipocalin) ELISA Kit	62.5--4000pg/mL	37.5pg/mL	Sandwich
E-EL-R0711	Rat MAPK14 (Mitogen Activated Protein Kinase 14) ELISA Kit	1.25--80ng/mL	0.75ng/mL	Sandwich
E-EL-R1042	Rat TP53 (Tumor Protein 53) ELISA Kit	78.13--5000pg/mL	46.88pg/mL	Sandwich
E-EL-R1080	Rat XIAP (X-Linked Inhibitor Of Apoptosis Protein) ELISA Kit	23.5--1500pg/mL	5.88pg/mL	Sandwich
E-EL-R1102	Rat SIRT1 (NAD-dependent protein deacetylase sirtuin-1) ELISA Kit	0.16--10ng/mL	0.09ng/mL	Sandwich
E-EL-R2373	Rat FASL (Factor Related Apoptosis Ligand) ELISA Kit	31.25--2000pg/mL	18.75pg/mL	Sandwich
E-EL-R2420	Rat $\alpha$ 1-AT (Alpha 1-Antitrypsin) ELISA Kit	6.25--400ng/mL	3.75ng/mL	Sandwich
E-EL-R2422	Rat Fc $\epsilon$ R2/CD23 (Receptor II for the Fc Region of Immunoglobulin E) ELISA Kit	31.25--2000pg/mL	18.75pg/mL	Sandwich





Cat. No	Product Name	Detection Range	Sensitivity	Test Method
E-EL-R2528	Rat ERK2(Extracellular Signal Regulated Kinase 2) ELISA Kit	0.78--50ng/mL	0.47ng/mL	Sandwich
E-EL-R2529	Rat ERK1/2(Extracellular Signal Regulated Kinase 1/2) ELISA Kit	0.78--50ng/mL	0.47ng/mL	Sandwich
E-EL-R2541	Rat sgp130 (soluble Glucoprotein 130) ELISA Kit	0.16--10ng/mL	0.09ng/mL	Sandwich



# Proteolysis&Ubiquitin

Cat. No	Product Name	Detection Range	Sensitivity	Test Method
E-EL-H0002	Human ACE (Angiotensin I Converting Enzyme) ELISA Kit	0.78--50ng/mL	0.47ng/mL	Sandwich
E-EL-H0055	Human Cys-C (Cystatin C) ELISA Kit	6.25--400ng/mL	3.75ng/mL	Sandwich
E-EL-H0058	Human DPP4 (Dipeptidyl Peptidase IV) ELISA Kit	0.31--20ng/mL	0.19ng/mL	Sandwich
E-EL-H0132	Human MMP-10 (Matrix Metalloproteinase 10) ELISA Kit	78.13--5000pg/mL	46.88pg/mL	Sandwich
E-EL-H0134	Human MMP-13 (Matrix Metalloproteinase 13) ELISA Kit	0.31--20ng/mL	0.19ng/mL	Sandwich
E-EL-H0165	Human TFPI (Tissue Factor Pathway Inhibitor) ELISA Kit	0.16--10ng/mL	0.09ng/mL	Sandwich
E-EL-H0184	Human TIMP-1 (Tissue Inhibitors of Metalloproteinase 1) ELISA Kit	0.16--10ng/mL	0.09ng/mL	Sandwich
E-EL-H0234	Human $\alpha$ 1ACT (Alpha1 Antichymotrypsin) ELISA Kit	1.25--80ng/mL	0.75ng/mL	Sandwich
E-EL-H0265	Human ADAM9 (A Disintegrin And Metalloprotease 9) ELISA Kit	62.5--4000pg/mL	37.5pg/mL	Sandwich
E-EL-H0432	Human AT (AntiThrombin) ELISA Kit	31.25--2000ng/mL	18.75ng/mL	Sandwich
E-EL-H1441	Human MMP-1 (Matrix Metalloproteinase 1) ELISA Kit	0.16--10ng/mL	0.09ng/mL	Sandwich



Cat. No	Product Name	Detection Range	Sensitivity	Test Method
E-EL-H1446	Human MMP-3 (Matrix Metalloproteinase 3) ELISA Kit	0.16--10ng/mL	0.09ng/mL	Sandwich
E-EL-H1449	Human MMP-7 (Matrix Metalloproteinase 7) ELISA Kit	0.16--10ng/mL	0.09ng/mL	Sandwich
E-EL-H1450	Human MMP-8 (Matrix Metalloproteinase 8) ELISA Kit	0.16--10ng/mL	0.09ng/mL	Sandwich
E-EL-H1451	Human MMP-9 (Matrix Metalloproteinase 9) ELISA Kit	31.25--2000pg/mL	18.75pg/mL	Sandwich
E-EL-H1453	Human TIMP-2 (Tissue Inhibitors of Metalloproteinase 2) ELISA Kit	0.16--10ng/mL	0.09ng/mL	Sandwich
E-EL-H1855	Human KLK1 (Kallikrein 1) ELISA Kit	18.75--1200pg/mL	11.25pg/mL	Sandwich
E-EL-H1946	Human NE/ELA2 (Elastase 2, Neutrophil) ELISA Kit	0.78--50ng/mL	0.47ng/mL	Sandwich
E-EL-H2102	Human Plg (Plasminogen) ELISA Kit	0.78--50ng/mL	0.47ng/mL	Sandwich
E-EL-H2106	Human tPA (Plasminogen Activator, Tissue) ELISA Kit	0.63--40ng/mL	0.38ng/mL	Sandwich
E-EL-H2447	Human PI3/Elafin (Peptidase Inhibitor 3, Skin Derived) ELISA Kit	31.25--2000pg/mL	18.75pg/mL	Sandwich
E-EL-H5431	Human CTSS(Cathepsin S)ELISA Kit	0.16--10ng/mL	0.09ng/mL	Sandwich
E-EL-M0074	Mouse MMP-10 (Matrix Metalloproteinase 10) ELISA Kit	62.5--4000pg/mL	37.5pg/mL	Sandwich
E-EL-M0076	Mouse MMP-13 (Matrix Metalloproteinase 13) ELISA Kit	78.13--5000pg/mL	46.88pg/mL	Sandwich



Cat. No	Product Name	Detection Range	Sensitivity	Test Method
E-EL-M0091	Mouse ACE (Angiotensin I Converting Enzyme) ELISA Kit	0.31--20ng/mL	0.19ng/mL	Sandwich
E-EL-M0389	Mouse Cys-C (Cystatin C) ELISA Kit	0.31--20ng/mL	0.19ng/mL	Sandwich
E-EL-M0626	Mouse MMP-3 (Matrix Metalloproteinase 3) ELISA Kit	0.16--10ng/mL	0.09ng/mL	Sandwich
E-EL-M0627	Mouse MMP-9 (Matrix Metalloproteinase-9) ELISA Kit	78.13--5000pg/mL	46.88pg/mL	Sandwich
E-EL-M0641	Mouse TIMP-1 (Tissue Inhibitors of Metalloproteinase 1) ELISA Kit	0.16--10ng/mL	0.09ng/mL	Sandwich
E-EL-M0783	Mouse MMP-7 (Matrix Metalloproteinase 7) ELISA Kit	62.5--4000pg/mL	37.5pg/mL	Sandwich
E-EL-M0784	Mouse MMP-8 (Matrix Metalloproteinase 8) ELISA Kit	0.31--20ng/mL	0.19ng/mL	Sandwich
E-EL-M0914	Mouse PAI-1 (Plasminogen Activator Inhibitor 1) ELISA Kit	0.16--10ng/mL	0.09ng/mL	Sandwich
E-EL-M0917	Mouse tPA (Plasminogen Activator, Tissue) ELISA Kit	39.06--2500pg/mL	23.44pg/mL	Sandwich
E-EL-M1138	Mouse TAT (Thrombin-Antithrombin Complex) ELISA Kit	15.63--1000pg/mL	9.38pg/mL	Sandwich
E-EL-M1162	Mouse TFPI (Tissue Factor Pathway Inhibitor) ELISA Kit	78.13--5000pg/mL	46.88pg/mL	Sandwich
E-EL-M1164	Mouse TIMP-2 (Tissue Inhibitors of Metalloproteinase 2) ELISA Kit	0.31--20ng/mL	0.19ng/mL	Sandwich
E-EL-M2440	Mouse DPP4 (Dipeptidyl Peptidase IV) ELISA Kit	62.5--4000pg/mL	37.5pg/mL	Sandwich



Cat. No	Product Name	Detection Range	Sensitivity	Test Method
E-EL-R0043	Rat MMP-10 (Matrix Metalloproteinase 10) ELISA Kit	0.16--10ng/mL	0.09ng/mL	Sandwich
E-EL-R0045	Rat MMP-13 (Matrix Metalloproteinase 13) ELISA Kit	0.31--20ng/mL	0.19ng/mL	Sandwich
E-EL-R0337	Rat DPP IV (Dipeptidyl Peptidase IV ) ELISA Kit	0.63--40ng/mL	0.38ng/mL	Sandwich
E-EL-R0540	Rat TIMP-1(Tissue Inhibitors of Metalloproteinase 1)ELISA Kit	0.16--10ng/mL	0.09ng/mL	Sandwich
E-EL-R0619	Rat MMP-3 (Matrix Metalloproteinase 3) ELISA Kit	0.16--10ng/mL	0.09ng/mL	Sandwich
E-EL-R0622	Rat MMP-7 (Matrix Metalloproteinase 7) ELISA Kit	0.16--10ng/mL	0.09ng/mL	Sandwich
E-EL-R0623	Rat MMP-8 (Matrix Metalloproteinase 8) ELISA Kit	78.13--5000pg/mL	46.88pg/mL	Sandwich
E-EL-R0624	Rat MMP-9(Matrix Metalloproteinase 9)ELISA Kit	0.78--50ng/mL	0.47ng/mL	Sandwich
E-EL-R0744	Rat PAI-1 (Plasminogen Activator Inhibitor 1) ELISA Kit	0.31--20ng/mL	0.19ng/mL	Sandwich
E-EL-R0865	Rat TACE (TNF $\alpha$ Converting Enzyme) ELISA Kit	0.31--20ng/mL	0.19ng/mL	Sandwich
E-EL-R0958	Rat TAT (Thrombin-Antithrombin Complex) ELISA Kit	0.31--20ng/mL	0.19ng/mL	Sandwich
E-EL-R0983	Rat TFPI (Tissue Factor Pathway Inhibitor) ELISA Kit	62.5--4000pg/mL	37.5pg/mL	Sandwich
E-EL-R0985	Rat TIMP-2(Tissue Inhibitors of Metalloproteinase 2)ELISA Kit	0.63--40ng/mL	0.38ng/mL	Sandwich



Cat. No	Product Name	Detection Range	Sensitivity	Test Method
E-EL-R0988	Rat TPA (Tissue Polypeptide Antigen) ELISA Kit	15.63--1000pg/mL	9.38pg/mL	Sandwich
E-EL-R1139	Rat $\alpha$ 2-M(Alpha-2 Macroglobulin)ELISA Kit	9.38--600ng/mL	5.63ng/mL	Sandwich
E-EL-R2401	Rat ACE (Angiotensin I Converting Enzyme) ELISA Kit	0.31--20ng/mL	0.19ng/mL	Sandwich



# Cell Cycle

Cat. No	Product Name	Detection Range	Sensitivity	Test Method
E-EL-H0011	Human BMP-2 (Bone Morphogenetic Protein 2) ELISA Kit	62.5--4000pg/mL	37.5pg/mL	Sandwich
E-EL-H0012	Human BMP-4 (Bone Morphogenetic Protein 4) ELISA Kit	31.25--2000pg/mL	18.75pg/mL	Sandwich
E-EL-H0013	Human BMP-7 (Bone Morphogenetic Protein 7) ELISA Kit	31.25--2000pg/mL	18.75pg/mL	Sandwich
E-EL-H0059	Human EGF (Epidermal Growth Factor) ELISA Kit	3.91--250pg/mL	2.34pg/mL	Sandwich
E-EL-H0088	Human IL-1 $\alpha$ (Interleukin 1 Alpha) ELISA Kit	3.91--250pg/mL	2.34pg/mL	Sandwich
E-EL-H0094	Human LIF (Leukemia Inhibitory Factor) ELISA Kit	31.25--2000pg/mL	18.75pg/mL	Sandwich
E-EL-H0588	Human BMP-6 (Bone Morphogenetic Protein 6) ELISA Kit	0.16--10ng/mL	0.09ng/mL	Sandwich
E-EL-H0748	Human CD30 (Cluster of Differentiation 30) ELISA Kit	0.78--50ng/mL	0.47ng/mL	Sandwich
E-EL-H1051	Human GAL1 (Galectin 1 ) ELISA Kit	0.78--50ng/mL	0.47ng/mL	Sandwich
E-EL-H1205	Human NGF (Nerve Growth Factor) ELISA Kit	15.63--1000pg/mL	9.38pg/mL	Sandwich
E-EL-H1260	Human NNE (Non-Neuronal Enolase) ELISA Kit	0.31--20ng/mL	0.19ng/mL	Sandwich



Cat. No	Product Name	Detection Range	Sensitivity	Test Method
E-EL-H1470	Human GAL3 (Galectin 3) ELISA Kit	0.16--10ng/mL	0.09ng/mL	Sandwich
E-EL-H1575	Human PDGF-AA (Platelet Derived Growth Factor-AA) ELISA Kit	15.63--1000pg/mL	9.38pg/mL	Sandwich
E-EL-H1576	Human PDGF-AB (Platelet Derived Growth Factor AB) ELISA Kit	31.25--2000pg/mL	18.75pg/mL	Sandwich
E-EL-H1577	Human PDGF-BB (Platelet Derived Growth Factor-BB) ELISA Kit	31.25--2000pg/mL	18.75pg/mL	Sandwich
E-EL-H1645	Human BMP-5 (Bone Morphogenetic Protein 5) ELISA Kit	62.5--4000pg/mL	37.5pg/mL	Sandwich
E-EL-H1655	Human mTOR (Mammalian Target of Rapamycin) ELISA Kit	0.16--10ng/mL	0.09ng/mL	Sandwich
E-EL-H1860	Human HSP-27/HSPB1 (Heat Shock Protein 27) ELISA Kit	0.78--50ng/mL	0.47ng/mL	Sandwich
E-EL-H1898	Human NTRK2 (Neurotrophic Tyrosine Kinase Receptor Type 2 ) ELISA Kit	93.75--6000pg/mL	56.25pg/mL	Sandwich
E-EL-H5022	Human IL-11 (Interleukin 11) ELISA Kit	31.25--2000pg/mL	18.75pg/mL	Sandwich
E-EL-M0025	Mouse EGF (Epidermal growth factor) ELISA Kit	15.63--1000pg/mL	9.38pg/mL	Sandwich
E-EL-M0036	Mouse IL-1 $\alpha$ (Interleukin 1 Alpha)ELISA Kit	15.63--1000pg/mL	9.38pg/mL	Sandwich
E-EL-M0040	Mouse LIF (Leukemia Inhibitory Factor) ELISA Kit	15.63--1000pg/mL	9.38pg/mL	Sandwich
E-EL-M0193	Mouse BMP-2 (Bone Morphogenetic Protein 2) ELISA Kit	62.5--4000pg/mL	37.5pg/mL	Sandwich





Cat. No	Product Name	Detection Range	Sensitivity	Test Method
E-EL-M0194	Mouse BMP-4(Bone Morphogenetic Protein 4)ELISA Kit	31.25--2000pg/mL	18.75pg/mL	Sandwich
E-EL-M0195	Mouse BMP-6 (Bone Morphogenetic Protein 6) ELISA Kit	78.13--5000pg/mL	46.88pg/mL	Sandwich
E-EL-M0196	Mouse BMP-7 (Bone Morphogenetic Protein 7) ELISA Kit	15.63--1000pg/mL	9.38pg/mL	Sandwich
E-EL-M0296	Mouse CD30 (Cluster of differentiation 30) ELISA Kit	46.88--3000pg/mL	28.13pg/mL	Sandwich
E-EL-M0527	Mouse GAL1 (Galectin 1) ELISA Kit	0.78--50ng/mL	0.47ng/mL	Sandwich
E-EL-M0529	Mouse GAL3 (Galectin 3) ELISA Kit	31.25--2000pg/mL	18.75pg/mL	Sandwich
E-EL-M0616	Mouse HSP-27 (heat shock protein 27) ELISA Kit	0.63--40ng/mL	0.38ng/mL	Sandwich
E-EL-M0630	Mouse PDGF-AA (Platelet-Derived Growth Factor-AA) ELISA Kit	62.5--4000pg/mL	15.6pg/mL	Sandwich
E-EL-M0631	Mouse PDGF-AB (Platelet-Derived Growth Factor AB) ELISA Kit	78.13-5000pg/mL	19pg/mL	Sandwich
E-EL-M0632	Mouse PDGF-BB (Platelet-Derived Growth Factor-BB) ELISA Kit	39.06--2500pg/mL	23.44pg/mL	Sandwich
E-EL-M0725	Mouse IL-11 (Interleukin 11) ELISA Kit	15.63--1000pg/mL	9.38pg/mL	Sandwich
E-EL-M0815	Mouse NGF (Nerve growth factor) ELISA Kit	31.25--2000pg/mL	18.75pg/mL	Sandwich
E-EL-M0821	Mouse NTRK2 (Neurotrophic Tyrosine Kinase Receptor Type 2) ELISA Kit	78.13--5000pg/mL	46.88pg/mL	Sandwich



Cat. No	Product Name	Detection Range	Sensitivity	Test Method
E-EL-R0002	Rat BMP-2 (Bone Morphogenetic Protein 2) ELISA Kit	62.5--400pg/mL	37.5pg/mL	Sandwich
E-EL-R0011	Rat IL-1 $\alpha$ (Interleukin 1 Alpha) ELISA Kit	15.63--1000pg/mL	9.38pg/mL	Sandwich
E-EL-R0116	Rat BMP-4 (Bone Morphogenetic Protein 4) ELISA Kit	15.63--1000pg/mL	9.38pg/mL	Sandwich
E-EL-R0117	Rat BMP-5 (Bone Morphogenetic Protein 5) ELISA Kit	0.16--10ng/mL	0.09ng/mL	Sandwich
E-EL-R0118	Rat BMP-6 (Bone Morphogenetic Protein 6) ELISA Kit	0.16--10ng/mL	0.09ng/mL	Sandwich
E-EL-R0119	Rat BMP-7 (Bone Morphogenetic Protein 7) ELISA Kit	15.63--1000pg/mL	9.38pg/mL	Sandwich
E-EL-R0216	Rat CD30 (Cluster of differentiation 30) ELISA Kit	1.56--100ng/mL	0.94ng/mL	Sandwich
E-EL-R0369	Rat EGF (Epidermal Growth Factor) ELISA Kit	15.63--1000pg/mL	9.38pg/mL	Sandwich
E-EL-R0397	Rat GAL1 (Galectin 1) ELISA Kit	0.63--40ng/mL	0.38ng/mL	Sandwich
E-EL-R0399	Rat GAL3(Galectin 3)ELISA Kit	31.25--2000pg/mL	18.75pg/mL	Sandwich
E-EL-R0476	Rat HSP-27 (Heat Shock Protein 27) ELISA Kit	0.78--50ng/mL	0.47ng/mL	Sandwich
E-EL-R0536	Rat PDGF-AB (Platelet-Derived Growth Factor AB) ELISA Kit	7.81--500pg/mL	4.69pg/mL	Sandwich
E-EL-R0537	Rat PDGF-BB (Platelet-Derived Growth Factor-BB) ELISA Kit	31.25--2000pg/mL	18.75pg/mL	Sandwich



Cat. No	Product Name	Detection Range	Sensitivity	Test Method
E-EL-R0562	Rat IL-11 (Interleukin 11) ELISA Kit	15.63--1000pg/mL	9.38pg/mL	Sandwich
E-EL-R0585	Rat LIF (Leukemia Inhibitory Factor) ELISA Kit	15.63--1000pg/mL	9.38pg/mL	Sandwich
E-EL-R0645	Rat PTEN (Phosphatase and Tensin Homolog) ELISA Kit	0.16--10ng/mL	0.09ng/mL	Sandwich
E-EL-R0652	Rat NGF (Nerve Growth Factor) ELISA Kit	39.06--2500pg/mL	23.44pg/mL	Sandwich
E-EL-R0656	Rat NTRK2 (Neurotrophic Tyrosine Kinase Receptor Type 2) ELISA Kit	93.75--6000pg/mL	56.25pg/mL	Sandwich
E-EL-R2403	Rat NNE (Non-Neuronal Enolase) ELISA Kit	0.31--20ng/mL	0.19ng/mL	Sandwich



## Other Antibodies

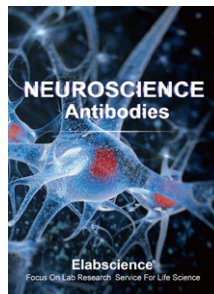
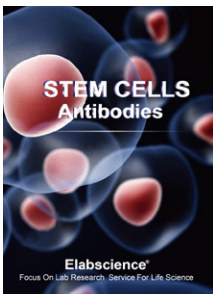
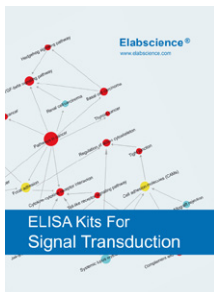
Cat. No	Product Name	Detection Range	Sensitivity	Test Method
E-EL-H0004	Human ADP/Acrp30 (Adiponectin) ELISA Kit	0.78--50ng/mL	0.47ng/mL	Sandwich
E-EL-H0208	Human 12-HETE (12-Hydroxyeicosatetraenoic Acid) ELISA Kit	0.78--50ng/mL	0.47ng/mL	Competitive
E-EL-H1113	Human SOD1 (Superoxide Dismutase 1, Soluble) ELISA Kit	62.5--4000pg/mL	37.5pg/mL	Competitive
E-EL-H1277	Human HIF-1 $\alpha$ (Hypoxia Inducible Factor 1 Alpha) ELISA Kit	0.16--10ng/mL	0.09ng/mL	Sandwich
E-EL-H1507	Human HP (Haptoglobin) ELISA Kit	12.5--800ng/mL	7.5ng/mL	Sandwich
E-EL-H1635	Human LOX-1 (Lectin Like Oxidized Low Density Lipoprotein Receptor 1) ELISA Kit	0.16--10ng/mL	0.09ng/mL	Sandwich
E-EL-H1867	Human HSF1 (Heat Shock Transcription Factor 1) ELISA Kit	0.31--20ng/mL	0.19ng/mL	Sandwich
E-EL-M0002	Mouse ADP/Acrp30 (Adiponectin) ELISA Kit	15.63--1000pg/mL	9.38pg/mL	Sandwich
E-EL-M0349	Mouse CORT (Corticosterone) ELISA Kit	0.31--20ng/mL	0.19ng/mL	Competitive
E-EL-M0613	Mouse HP (Haptoglobin) ELISA Kit	78.13--5000ng/mL	46.88ng/mL	Sandwich
E-EL-M0614	Mouse HSF1 (Heat Shock Factor 1) ELISA Kit	0.78--50ng/mL	0.47ng/mL	Sandwich



Cat. No	Product Name	Detection Range	Sensitivity	Test Method
E-EL-M0687	Mouse HIF-1 $\alpha$ (Hypoxia Inducible Factor 1 Alpha) ELISA Kit	125--8000pg/mL	75pg/mL	Sandwich
E-EL-M2398	Mouse SOD1 (Superoxide Dismutase 1, Soluble) ELISA Kit	0.16--10ng/mL	0.09ng/mL	Competitive
E-EL-R0269	Rat CORT (Corticosterone) ELISA Kit	78.13--5000pg/mL	46.88pg/mL	Competitive
E-EL-R0329	Rat ADP/Acrp30 (Adiponectin) ELISA Kit	46.88--3000pg/mL	28.13pg/mL	Sandwich
E-EL-R0473	Rat HP (Haptoglobin) ELISA Kit	15.63--1000ng/mL	9.38ng/mL	Sandwich
E-EL-R0475	Rat HSF1 (Heat Shock Factor 1) ELISA Kit	0.31--20ng/mL	0.19ng/mL	Sandwich
E-EL-R0513	Rat HIF-1 $\alpha$ (Hypoxia Inducible Factor 1 Alpha) ELISA Kit	7.81--500pg/mL	4.69pg/mL	Sandwich
E-EL-R1424	Rat SOD1( Superoxide Dismutase 1, Soluble) ELISA Kit	0.16--10ng/mL	0.09ng/mL	Competitive



# Brochure of ELISA kits & Antibodies





**Elabscience Biotechnology Inc.**

**Web: [www.elabscience.com](http://www.elabscience.com)**

**Email: [techsupport@elabscience.com](mailto:techsupport@elabscience.com)**