

A microscopic view of cells, with a large, prominent red cell in the foreground and several smaller, blue-tinted cells in the background. The text is overlaid on the image.

# **STEM CELLS**

## **Antibodies**

---

**Elabscience®**

Focus On Lab Research Service For Life Science

# About Elabscience

---

Elabscience specializes in immunodiagnostic technology for the life science community. We have complete R&D and manufacture platform and have good quality control for every kit. We endeavor to reduce lot to lot variation to keep your experiment results more consistent and precise. Through unremitting efforts and development, our customers have spread in more than 100 countries and districts all over the world.

Elabscience's major products are Proteins, Antibodies, ELISA kits, CLIA Kits, labeling kits and related reagents. Elabscience also provides custom services for our customers including protein expression and purification service, antibody customized service, ELISA customized service, cell biology service, molecular biology service, and whole research project solutions.

# Product introduction

---



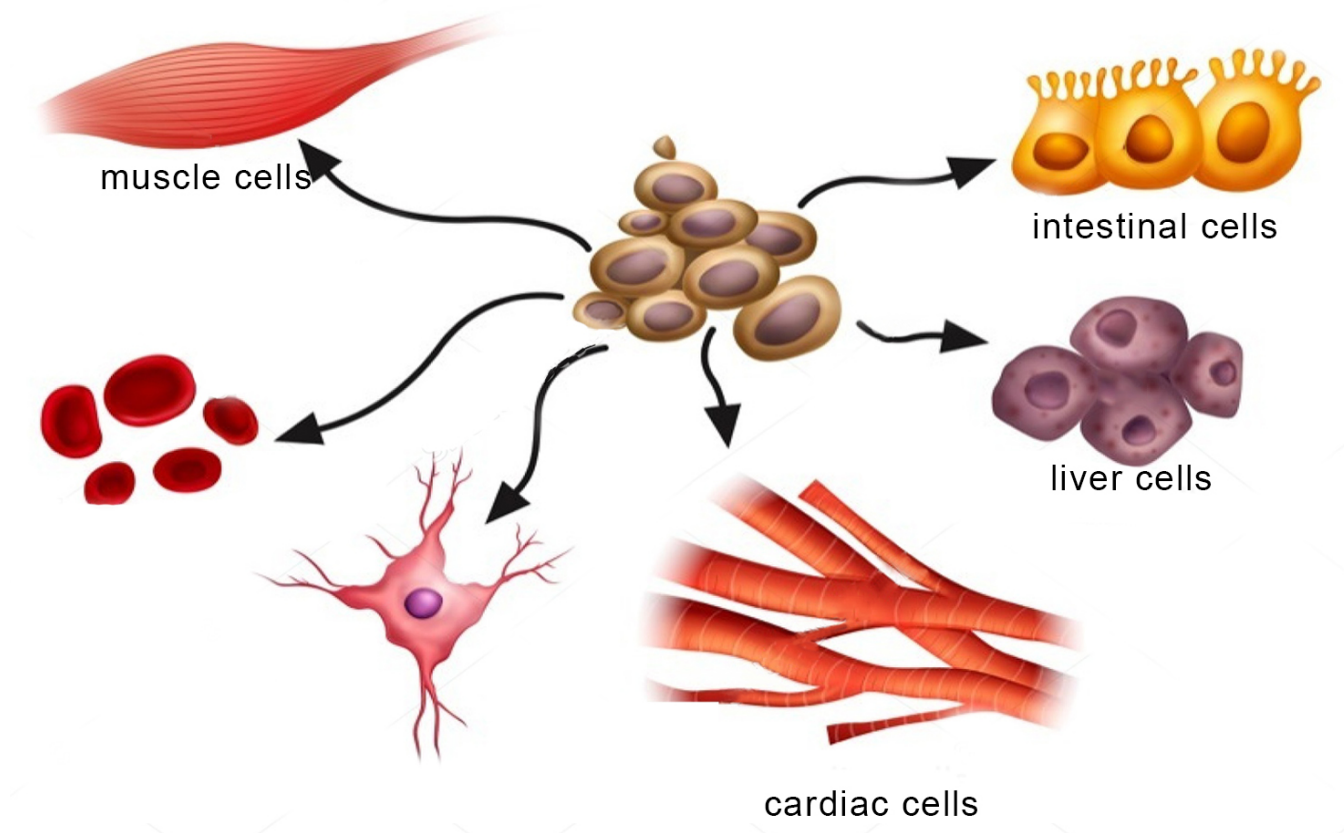




# Stem cells

Stem cells are undifferentiated biological cells that can differentiate into specialized cells and can divide (through mitosis) to produce more stem cells. They are found in multicellular organisms. In mammals, there are two broad types of stem cells: embryonic stem cells, which are isolated from the inner cell mass of blastocysts, and adult stem cells, which are found in various tissues. In adult organisms, stem cells and progenitor cells act as a repair system for the body, replenishing adult tissues. In a developing embryo, stem cells can differentiate into all the specialized cells-ectoderm, endoderm and mesoderm (see induced pluripotent stem cells)-but also maintain the normal turnover of regenerative organs, such as blood, skin, or intestinal tissues.

## Human Stem Cell Applications

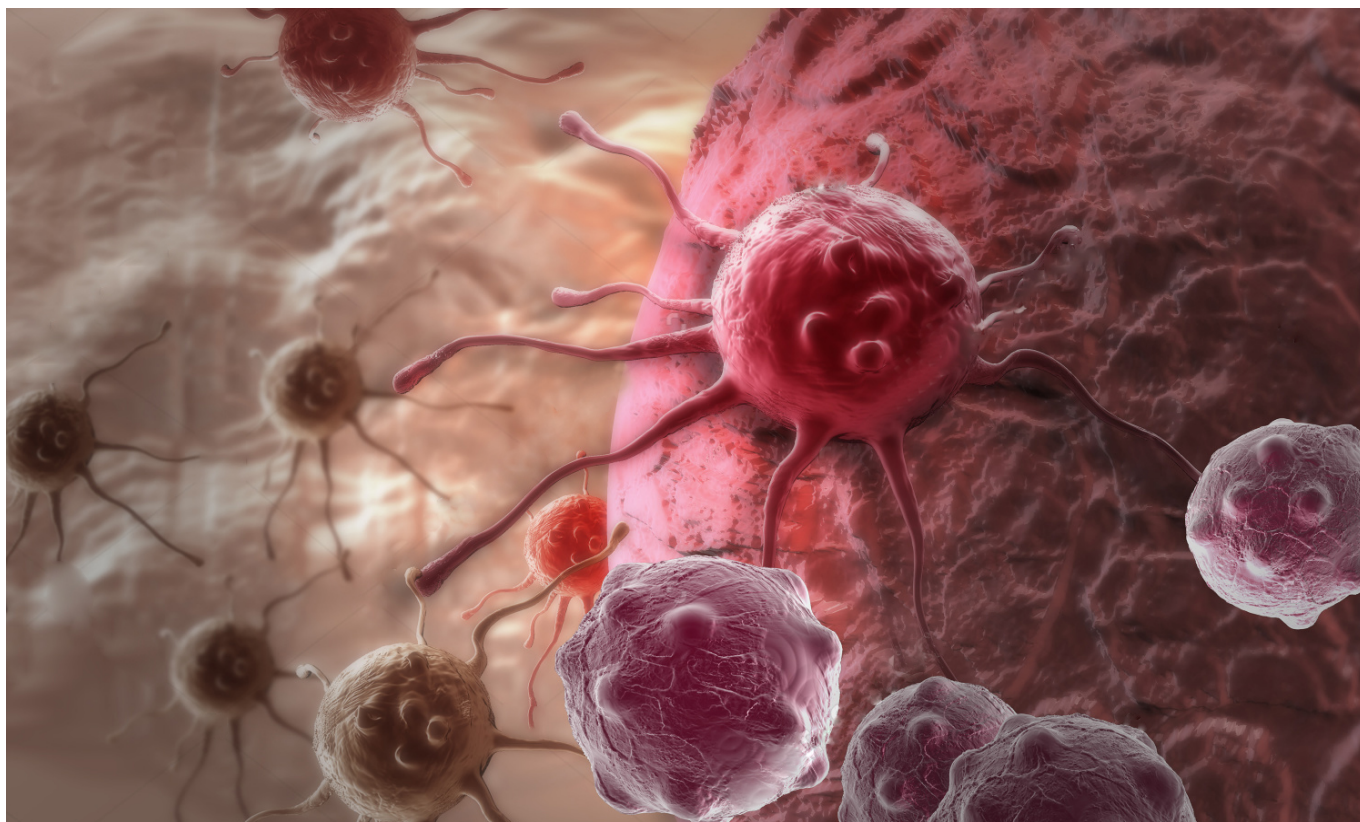






# Product details

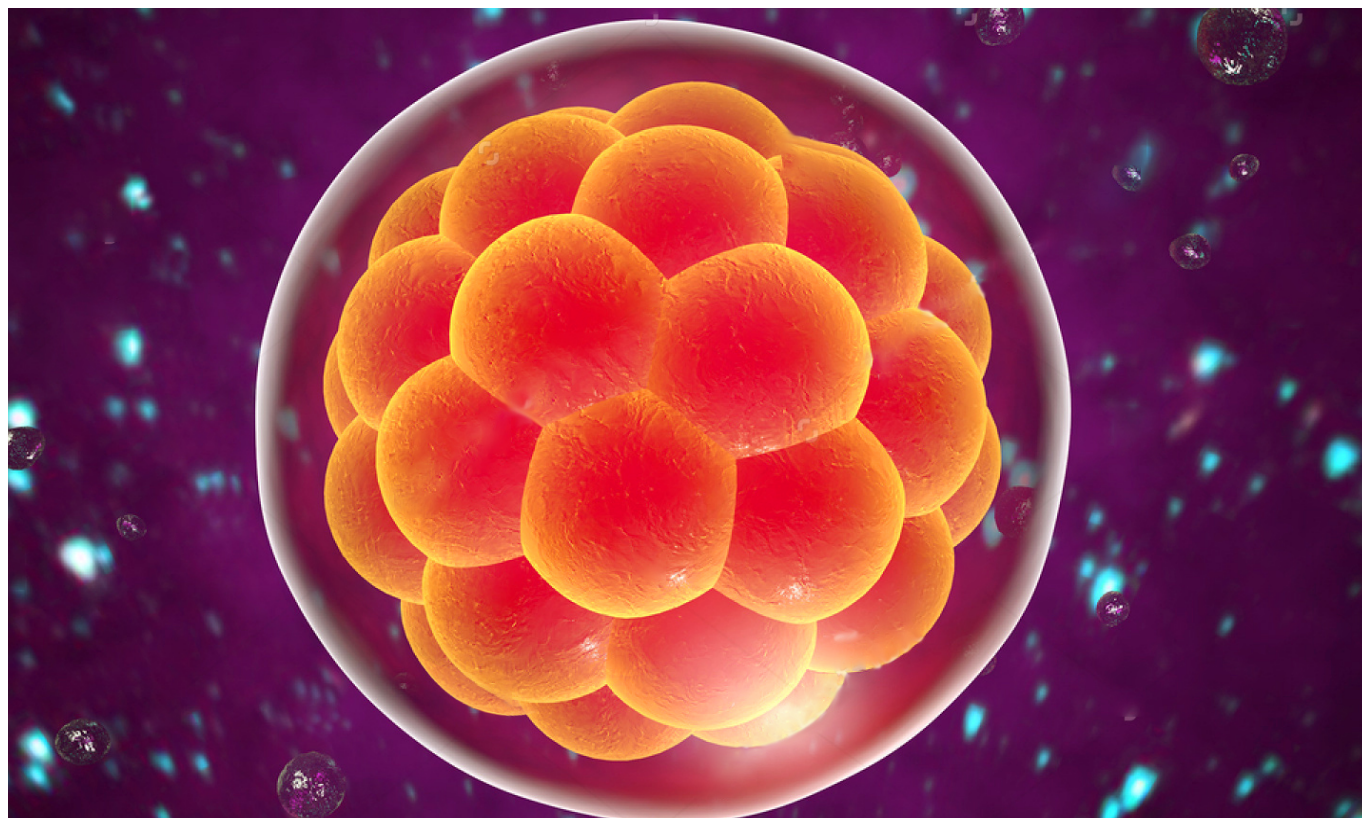
## Cancer stem cells



Cat. No.	Product Name	Swissprot	Reactivity	Application
ESAP16394	PSCA Polyclonal Antibody	O43653	H M	ELISA WB IHC
ESAP11775	ST18 Polyclonal Antibody	O60284	H M R	ELISA IHC
ENT5598	CD96 Polyclonal Antibody	P40200	H	WB ELISA
ENT0465	BCAS3 Polyclonal Antibody	Q9H6U6	H M	WB ELISA
ESAP12831	PARD6A Polyclonal Antibody	Q9NPB6	H	ELISA WB IHC
ESAP12951	ANKRD26 Polyclonal Antibody	Q9UPS8	H	ELISA IHC



## Embryonic stem cells



Cat. No.	Product Name	Swissprot	Reactivity	Application
ENP0244	SGK1 (Phospho-S422) Polyclonal Antibody	O00141	H M R	WB IHC ELISA
ENT4270	SGK1 Polyclonal Antibody	O00141	H M R	WB IHC IF ELISA
EAP1593	NR5A2 Polyclonal Antibody	O00482	H M R	WB IHC IF
EAP1499	DDX3X Polyclonal Antibody	O00571	H M R	WB IHC IF
ENT1311	DDX3 Polyclonal Antibody	O00571	H M R	WB IHC ELISA
ESAP13075	PODXL Polyclonal Antibody	O00592	H	ELISA IHC
ENT4606	TERT Polyclonal Antibody	O14746	H	WB IF ELISA
ESAP14430	IRF6 Polyclonal Antibody	O14896	H M	ELISA WB IHC
EAP3366	KLF4 Polyclonal Antibody	O43474	H M R	WB IHC
ESAP16370	HCRTR1 Polyclonal Antibody	O43613	H M R	ELISA IHC
ESAP16150	HCRTR2 Polyclonal Antibody	O43614	H M R	ELISA IHC
ESAP14376	GREM1 Polyclonal Antibody	O60565	H M R	ELISA WB
EAP1013	HMMR Polyclonal Antibody	O75330	H M R	WB IHC IF



# Embryonic stem cells

Cat. No.	Product Name	Swissprot	Reactivity	Application
ENP0143	Integrin $\beta$ 1 (Phospho-T788) Polyclonal Antibody	P05556	H M R	WB IHC ELISA
ESAP14427	ITGB1 Polyclonal Antibody	P05556	H M R	ELISA WB IHC
ESAP13418	TDGF1 Polyclonal Antibody	P13385	H	ELISA IHC
ESAP13550	HOXB8 Polyclonal Antibody	P17481	H M	ELISA WB
EAP3934	KITLG Polyclonal Antibody	P21583	H R	WB IHC
ENT0782	CD9 Polyclonal Antibody	P21926	H M R	WB IHC IF ELISA
EAP3126	ITGA6 Polyclonal Antibody	P23229	H	WB
ENC090	Cleaved-Integrin $\alpha$ 6 LC (E942) Polyclonal Antibody	P23229	H	WB ELISA
ENT5590	Integrin $\alpha$ 6 Polyclonal Antibody	P23229	H M R	WB ELISA
EAP0025	DDIT3 Polyclonal Antibody	P35638	H M R	IHC IF
ENT0911	CHOP Polyclonal Antibody	P35638	H M R	WB IHC IF ELISA
ENP0250	Stat3 (Phospho-S727) Polyclonal Antibody	P40763	H M R Mk	WB IHC IP ELISA
ENP0251	Stat3 (Phospho-Y705) Polyclonal Antibody	P40763	H M R	WB IHC IP ELISA
ENT4445	Stat3 Polyclonal Antibody	P40763	H M R	WB IHC IF ELISA
ESAP16076	LIFR Polyclonal Antibody	P42702	H	ELISA IHC
EAP0109	SOX2 Polyclonal Antibody	P48431	H M R	WB IHC IF
EAP3187	YBX1 Polyclonal Antibody	P67809	H M R	WB IHC
ENT3233	Oct-3/4 Polyclonal Antibody	Q01860	H M R	WB IHC ELISA
ENP0245	Shb (Phospho-Y246) Polyclonal Antibody	Q15464	H M	WB ELISA
ESAP12862	SHH Polyclonal Antibody	Q15465	H M R	ELISA IHC
ESAP15448	JMJD6 Polyclonal Antibody	Q6NYC1	H M R	ELISA WB IHC
ESAP12743	LRIG3 Polyclonal Antibody	Q6NYC1	H	ELISA IHC
ESAP13256	LIN28B Polyclonal Antibody	Q6ZN17	H M	ELISA WB
ESAP16441	STRA8 Polyclonal Antibody	Q6ZN17	H	ELISA IHC
ESAP16431	SIPA1 Polyclonal Antibody	Q7Z7J5	H	ELISA IHC



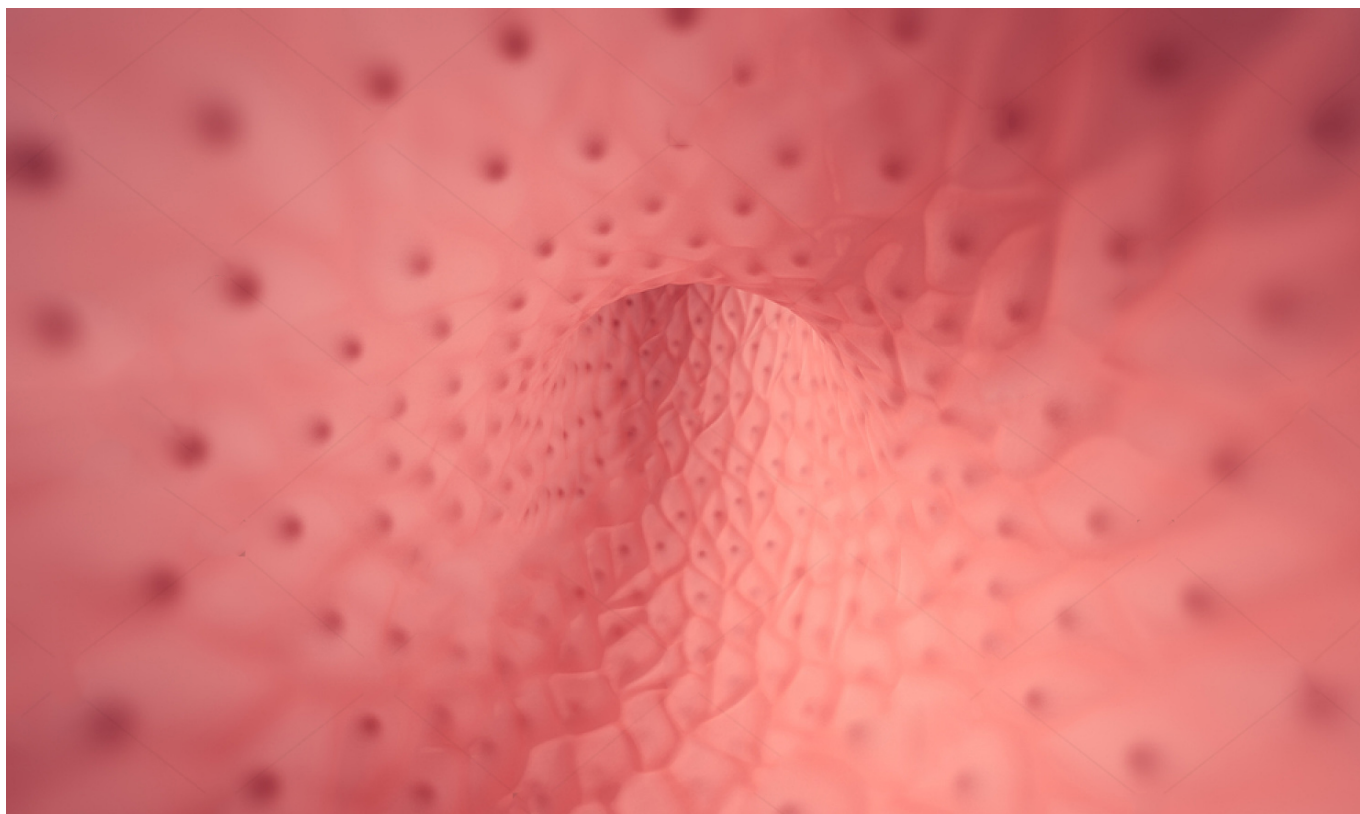


## Embryonic stem cells

Cat. No.	Product Name	Swissprot	Reactivity	Application
EAP0380	EHMT2 Polyclonal Antibody	Q96KQ7	H M R	WB
ESAP13251	ZFP42 Polyclonal Antibody	Q96MM3	H	ELISA WB
ESAP11621	GNL3 Polyclonal Antibody	Q9BVP2	H	ELISA WB IHC
ENT5055	Sox-17 Polyclonal Antibody	Q9H6I2	H M	WB ELISA
EAP3608	NANOG Polyclonal Antibody	Q9H9S0	H M R	WB
ESAP14366	GDF3 Polyclonal Antibody	Q9NR23	H M	ELISA WB IHC
EAP2193	SALL4 Polyclonal Antibody	Q9UJQ4	H	IHC IF
ENT1743	FoxD3 Polyclonal Antibody	Q9UJU5	H M	WB IHC ELISA



# Endothelial progenitors



Cat. No.	Product Name	Swissprot	Reactivity	Application
ESAP10837	VWF Polyclonal Antibody	P04275	H	ELISA IHC
ENT0757	CD34 Polyclonal Antibody	P28906	H M	WB ELISA
ESAP16339	MCAM Polyclonal Antibody	P43121	H	ELISA WB IHC
EAP3329	CXCR4 Polyclonal Antibody	P61073	H M R	WB IHC
ENP0917	Fusin (Phospho-S339) Polyclonal Antibody	P61073	H M R Mk	WB IHC IF ELISA
ENT1800	Fusin Polyclonal Antibody	P61073	H M R	WB IF ELISA
ENP0110	Flk-1 (Phospho-Y1175) Polyclonal Antibody	P35968	H M R	WB IHC ELISA
ENP0111	Flk-1 (Phospho-Y1214) Polyclonal Antibody	P35968	H M R	WB IHC IF ELISA
ENT1723	Flk-1 Polyclonal Antibody	P35968	H M	WB IHC IF ELISA
ESAP12217	KDR (phospho-Tyr1059) Polyclonal Antibody	P35968	H M	WB
ENC089	Cleaved-Integrin $\alpha$ 5 LC (E895) Polyclonal Antibody	P08648	H	WB ELISA
ENT5589	Integrin $\alpha$ 5 Polyclonal Antibody	P08648	H M R	WB ELISA



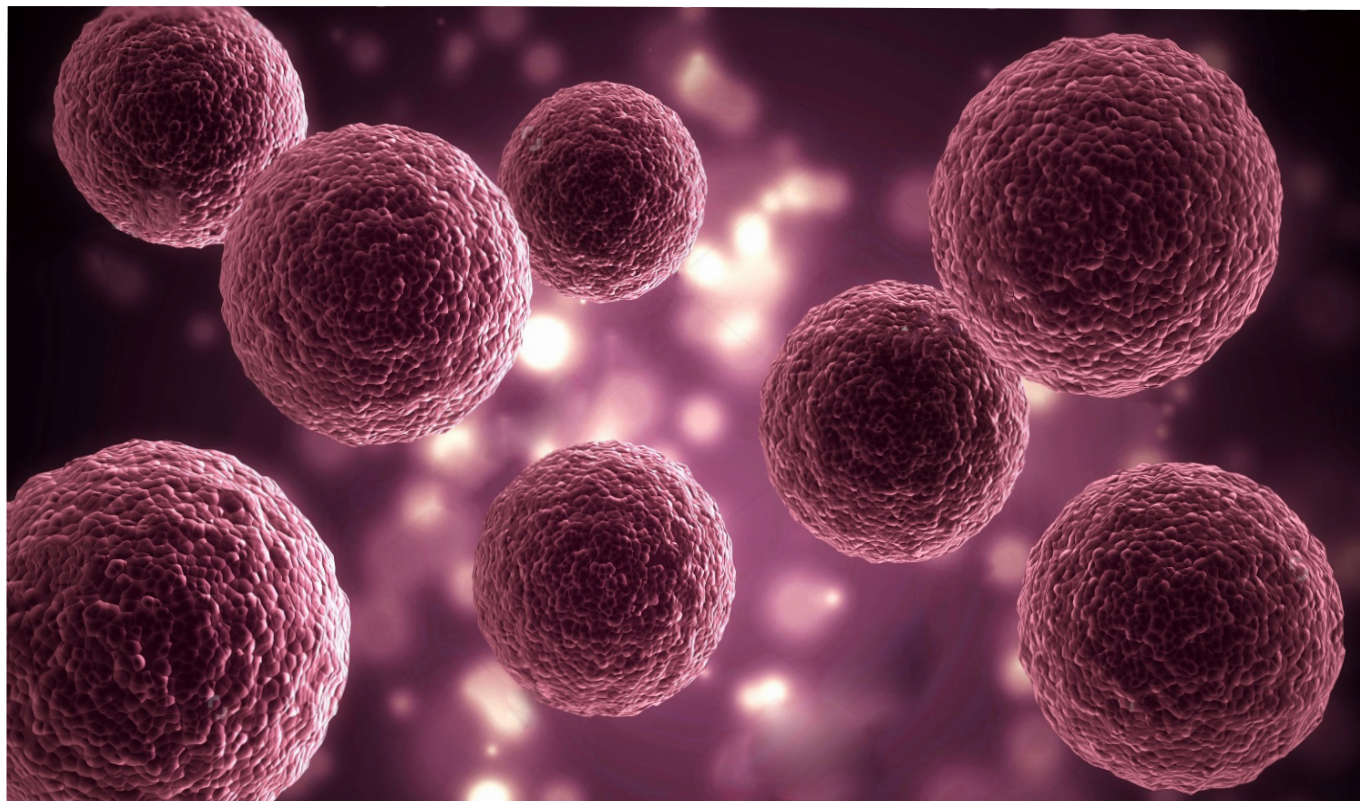
## Endothelial progenitors

Cat. No.	Product Name	Swissprot	Reactivity	Application
EAP2258	TEK Polyclonal Antibody	Q02763	H M R	WB IHC IF
ENP0437	Tie-2 (Phospho-Y992) Polyclonal Antibody	Q02763	H M	WB ELISA
ESAP13372	CD36 Polyclonal Antibody	P16671	H	ELISA WB IHC
EAP0928	SELE Polyclonal Antibody	P16581	H M R	WB IHC IF
EAP3037	CD14 Polyclonal Antibody	P08571	H	WB
ESAP12464	ASPP1 Polyclonal Antibody	Q96KQ4	H M	ELISA IHC
ENT4649	Tie-1 Polyclonal Antibody	P35590	H M R	WB ELISA





## Germline stem cells



Cat. No.	Product Name	Swissprot	Reactivity	Application
ENT1564	EOMES Polyclonal Antibody	O95936	H M	WB ELISA
ENP0066	c-Kit (Phospho-Y721) Polyclonal Antibody	P10721	H M R	WB ELISA
ENT0932	c-Kit Polyclonal Antibody	P10721	H M	WB IHC ELISA
ESAP12220	KIT (phospho-Tyr936) Polyclonal Antibody	P10721	H	WB IHC
ESAP11013	IFITM3 Polyclonal Antibody	Q01628	H	ELISA WB IHC
EAP3382	PUM1 Polyclonal Antibody	Q14671	H M	WB IHC
ESAP15605	ZBTB16 Polyclonal Antibody	Q05516	H M	ELISA WB
EAP3307	HIRA Polyclonal Antibody	P54198	H	WB
ESAP17230	SNX3 Polyclonal Antibody	O60493	H M R	ELISA WB IHC
ESAP15098	BMP15 Polyclonal Antibody	O95972	H	ELISA WB IHC
ENT2906	MSY2 Polyclonal Antibody	Q9Y2T7	H M	WB IHC IF ELISA
ESAP16169	PIWIL2 Polyclonal Antibody	Q8TC59	H	ELISA WB IHC

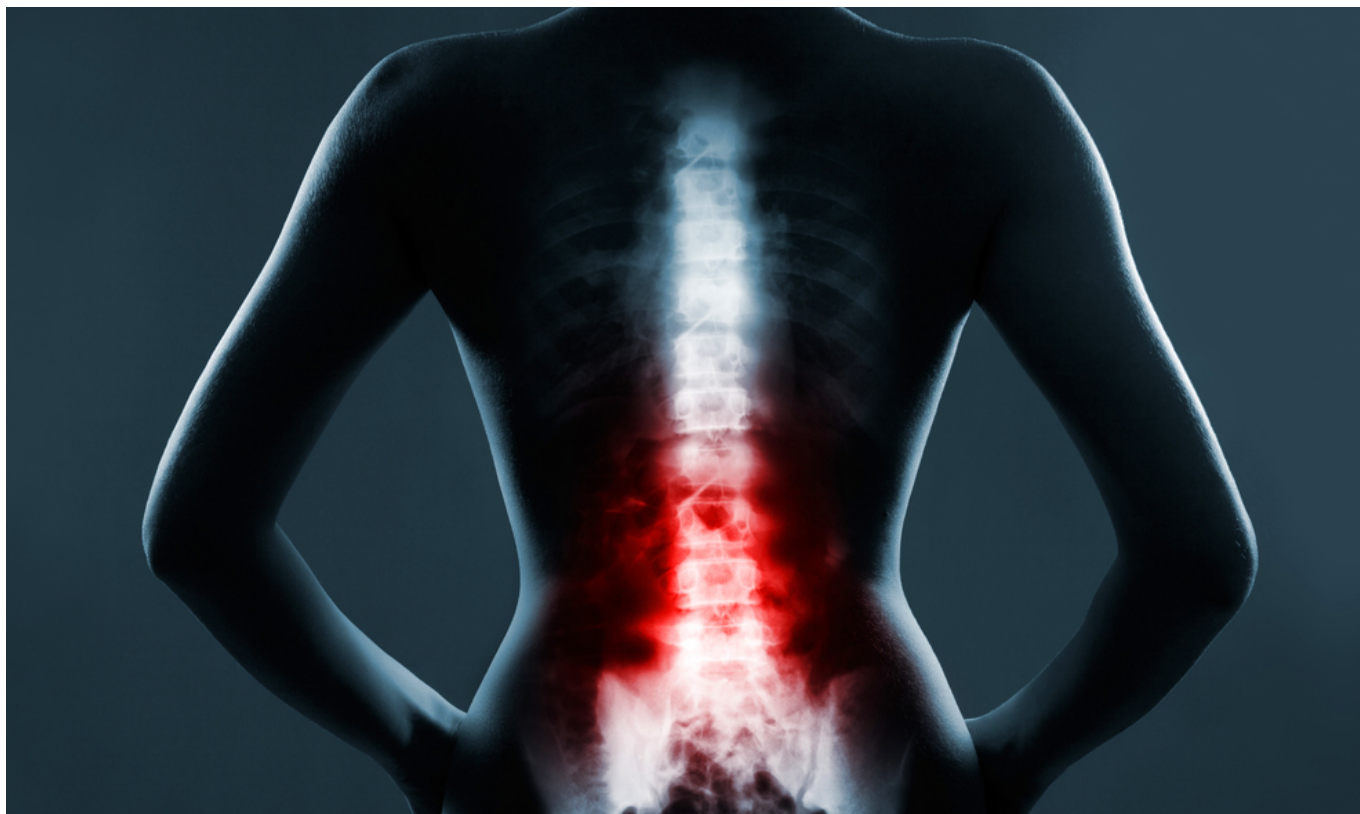


## Germline stem cells

Cat. No.	Product Name	Swissprot	Reactivity	Application
ESAP13252	PIWIL3 Polyclonal Antibody	Q7Z3Z3	H	ELISA IHC
EAP1237	PIWIL4 Polyclonal Antibody	Q7Z3Z4	H M R	WB IHC IF
EAP3649	FTSJ3 Polyclonal Antibody	Q8IY81	H	WB
EAP0791	LHX8 Polyclonal Antibody	Q68G74	H M R	WB IHC IF
ESAP15662	TRIM69 Polyclonal Antibody	Q86WT6	H M R	ELISA IHC
ENT2818	Mos Polyclonal Antibody	P00540	H	WB IF ELISA
ESAP11587	NANOS2 Polyclonal Antibody	P60321	H	ELISA IHC
ESAP12678	GPR64 Polyclonal Antibody	Q8IZP9	H	ELISA IHC
ESAP13435	DDX4 Polyclonal Antibody	Q9NQI0	H M R	ELISA IHC
ENT1541	Eme1 Polyclonal Antibody	Q96AY2	H	WB ELISA
EAP2110	HIRIP3 Polyclonal Antibody	Q9BW71	H M R	WB IHC IF
ESAP16325	SPAG6 Polyclonal Antibody	O75602	H M	ELISA IHC
ESAP10759	SPAG8 Polyclonal Antibody	Q99932	H	ELISA IHC
ESAP12878	SPAG4 Polyclonal Antibody	Q9NPE6	H	ELISA WB IHC
ESAP14722	SPATA6 Polyclonal Antibody	Q9NWH7	H M R	ELISA WB IHC
ESAP14263	CMTM2 Polyclonal Antibody	Q8TAZ6	H	ELISA IHC
ESAP14568	PEG10 Polyclonal Antibody	Q86TG7	H	ELISA WB
ENT0505	BMP-8A Polyclonal Antibody	Q7Z5Y6	H	WB IHC IF ELISA
ESAP10139	RBMY1A1 Polyclonal Antibody	P0DJD3	H	ELISA WB
ESAP15497	MEI1 Polyclonal Antibody	Q5TIA1	H	ELISA IHC



## Hematopoietic progenitors



Cat. No.	Product Name	Swissprot	Reactivity	Application
EAP0798	RUNX1 Polyclonal Antibody	Q01196	H M R	WB IHC IF
ENP0293	RUNX1 (Phospho-S249) Polyclonal Antibody	Q01196	H M R	WB ELISA
ENT1904	GIMAP4 Polyclonal Antibody	Q9NUV9	H	WB IHC ELISA
ENT0760	CD3- $\delta$ Polyclonal Antibody	P04234	H	WB ELISA
EAP0597	CD3E Polyclonal Antibody	P07766	H M R	WB IHC IF
ESAP15148	CD33 Polyclonal Antibody	P20138	H	ELISA WB IHC
ESAP16680	CD38 Polyclonal Antibody	P28907	H M R	ELISA WB IHC
ENT5241	CD2 Polyclonal Antibody	P06729	H	WB ELISA
ENM0048	CD20 Monoclonal Antibody	P11836	H M R	IHC
ESAP16671	CD24 Polyclonal Antibody	P25063	H	ELISA IHC
ESAP12750	ITGAM Polyclonal Antibody	P11215	H	ELISA IHC
ENT0735	CD19 Polyclonal Antibody	P15391	H M Mk	WB ELISA





## Hematopoietic progenitors

Cat. No.	Product Name	Swissprot	Reactivity	Application
ESAP13026	MME Polyclonal Antibody	P08473	H M R	ELISA WB IHC
ENM0090	CD16 Monoclonal Antibody	P08637/O75015	H	WB
ESAP11500	ITGA2B Polyclonal Antibody	P08514	H M	ELISA WB IHC
ESAP13379	NCAM1 Polyclonal Antibody	P13591	H M R	ELISA WB IHC
ESAP14463	LXN Polyclonal Antibody	Q9BS40	H M R	ELISA WB IHC
EPM12461	RBM15 Monoclonal Antibody	Q96T37	H;	ELISA WB IF
EAP0630	ALDH1A1 Polyclonal Antibody	P00352	H M R	WB IHC IF
ESAP10154	ALDH1A1/ALDH1A2/ALDH1A3 Polyclonal Antibody	P00352/O94788/P47895	H	ELISA WB IHC
ESAP16267	ANGPTL2 Polyclonal Antibody	Q9UKU9	H M	ELISA WB IHC
EAP0017	BMI1 Polyclonal Antibody	P35226	H M R	WB IHC IF
ESAP16695	CDCA4 Polyclonal Antibody	Q9BXL8	H M	ELISA IHC
ESAP13834	CD97 Polyclonal Antibody	P48960	H	ELISA IHC
ESAP14382	ERG Polyclonal Antibody	P11308	H M	ELISA WB IHC
ENT1604	ER81 Polyclonal Antibody	P50549	H M	WB IHC ELISA
ESAP16773	EPO Polyclonal Antibody	P01588	H M R	ELISA WB IHC
ENT5287	CD201 Polyclonal Antibody	Q9UNN8	H M R	WB ELISA
EAP1650	PHC1 Polyclonal Antibody	P78364	H M R	WB IHC
ESAP16851	HOXB4 Polyclonal Antibody	P17483	H M	ELISA WB
ESAP15442	IRGM Polyclonal Antibody	A1A4Y4	H	ELISA WB IHC
ENP0120	GATA-1 (Phospho-S310) Polyclonal Antibody	P15976	H M R Mk	WB ELISA
ENT1858	GATA-1 Polyclonal Antibody	P15976	H M R	WB IHC IP IF ELISA
ESAP12068	GATA1 (Phospho-Ser142) Polyclonal Antibody	P15976	H	WB IHC IF
EAP3936	MLF1 Polyclonal Antibody	P58340	H	WB IF
EAP1690	MLL5 Polyclonal Antibody	Q8IZD2	H M R	WB IHC IF



## Hematopoietic progenitors

Cat. No.	Product Name	Swissprot	Reactivity	Application
ESAP14993	PIM1 Polyclonal Antibody	P11309	H M R	ELISA IHC
ESAP10752	SOCS3 Polyclonal Antibody	O14543	H M R	ELISA WB IHC
EAP3085	ENPEP Polyclonal Antibody	Q07075	H M R	WB IHC
EAP0639	BMPR1A Polyclonal Antibody	P36894	H M R	WB
ENK5528	CD292 Polyclonal Antibody	P36894	H	WB ELISA
EAP0600	CD1D Polyclonal Antibody	P15813	H M R	WB IHC IF
ENT0762	CD4 Polyclonal Antibody	P01730	H M	WB IHC IF ELISA
EAP2008	CD5 Polyclonal Antibody	P06127	H M R	WB
ENP0544	CD5 (Phospho-Y453) Polyclonal Antibody	P06127	H M R	WB IHC IF ELISA
ENT5577	CD6 Polyclonal Antibody	P30203	H	WB ELISA
ENT5578	Integrin $\alpha$ L Polyclonal Antibody	P20701	H	WB ELISA
ESAP12749	ITGAX Polyclonal Antibody	P20702	H	ELISA IHC
EAP1519	ANPEP Polyclonal Antibody	P15144	H M R	WB
ENT5579	CD13 Polyclonal Antibody	P15144	H	WB ELISA
ESAP15426	FCGR3A Polyclonal Antibody	P08637	H	ELISA IHC
ESAP15441	ITGB2 Polyclonal Antibody	P05107	H M	ELISA WB IHC
ESAP15142	CD22 Polyclonal Antibody	P20273	H	ELISA IHC
ENM0082	CD23 Monoclonal Antibody	P06734	H M R	WB
ESAP11217	FCER2 Polyclonal Antibody	P06734	H	ELISA IHC
EAP3813	DPP4 Polyclonal Antibody	P27487	H M R	WB
ESAP15145	CD27 Polyclonal Antibody	P26842	H	ELISA WB IHC
ENT5244	CD28 Polyclonal Antibody	P10747	H	WB ELISA
ESAP12837	PECAM1 Polyclonal Antibody	P16284	H M	ELISA WB IHC
ENT0754	CD32 Polyclonal Antibody	P31994	H M R	WB IHC ELISA
EAP0022	CD40 Polyclonal Antibody	P25942	H M R	WB IHC



## Hematopoietic progenitors

Cat. No.	Product Name	Swissprot	Reactivity	Application
EAP2696	SPN Polyclonal Antibody	P16150	H	WB IHC
EAP0393	CD44 Polyclonal Antibody	P16070	H M	WB
ENP0349	CD44 (Phospho-S706) Polyclonal Antibody	P16070	H M R	WB ELISA
ESAP11532	CD44 Polyclonal Antibody	P16070	H M	ELISA WB IHC
ENT0765	CD45 Polyclonal Antibody	P08575	H M R	IHC IF ELISA
ENK5370	L-Selectin Polyclonal Antibody	P14151	H M R	WB ELISA
ENT0773	CD69 Polyclonal Antibody	Q07108	H M R	WB ELISA
EAP0779	CD70 Polyclonal Antibody	P32970	H M	WB IHC IF
ENP0729	CD71 (Phospho-S24) Polyclonal Antibody	P02786	H M	WB IHC ELISA
ENT0775	CD71 Polyclonal Antibody	P02786	H M	WB IHC ELISA
EAP3754	CD72 Polyclonal Antibody	P21854	H M R	WB
ESAP13331	CD80 Polyclonal Antibody	P33681	H	ELISA IHC
EAP0333	CD86 Polyclonal Antibody	P42081	H M	WB IHC ICC IF
ESAP16458	THY1 Polyclonal Antibody	P04216	H M R	ELISA IHC
EAP1716	FAS(Phospho-Y291) Polyclonal Antibody	P25445	H	WB
ENT1676	FAS Polyclonal Antibody	P25445	H	WB IF ELISA
ENT5599	CD98 Polyclonal Antibody	P08195	H M R	WB ELISA
ENT5607	Ox40 Polyclonal Antibody	P43489	H	WB ELISA
ENT0722	CD137 Polyclonal Antibody	Q07011	H	WB IF ELISA
ENT5271	CD229 Polyclonal Antibody	Q9HBG7	H	WB ELISA
ESAP11219	CD244 Polyclonal Antibody	Q9BZW8	H M	ELISA WB IHC
ENT5620	Ox40L Polyclonal Antibody	P23510	H	WB ELISA
ENT5285	CD276 Polyclonal Antibody	Q5ZPR3	H M R	WB ELISA
EAP1401	BCL11A Polyclonal Antibody	Q9H165	H M R	WB IHC
EAP0806	CTLA4 Polyclonal Antibody	P16410	H	WB



## Hematopoietic progenitors

Cat. No.	Product Name	Swissprot	Reactivity	Application
ENT1677	FAS-L Polyclonal Antibody	P48023	H M	WB IHC IF ELISA
ESAP15309	FAIM2 Polyclonal Antibody	Q9BWQ8	H M R	ELISA WB IHC
EAP1477	ICAM1 Polyclonal Antibody	P05362	H	WB
ENP0137	ICAM-1 (Phospho-Y512) Polyclonal Antibody	P05362	H	WB ELISA
ESAP16685	ICAM1 Polyclonal Antibody	P05362	H	ELISA WB IHC
ENT5601	ICAM-2 Polyclonal Antibody	P13598	H	WB ELISA
EAP0828	ITGAV Polyclonal Antibody	P06756	H M R	WB
ENC092	Cleaved-Integrin $\alpha$ V HC (K889) Polyclonal Antibody	P06756	H	WB ELISA
ENT2365	Integrin $\alpha$ V Polyclonal Antibody	P06756	H M	WB IHC ELISA
ESAP11501	ITGAE Polyclonal Antibody	P38570	H	ELISA WB IHC
ESAP13589	ITGB7 Polyclonal Antibody	P26010	H	ELISA WB IHC
ENK5395	IFN- $\gamma$ R $\alpha$ Polyclonal Antibody	P15260	H	WB ELISA
ENT5546	IL-6R $\alpha$ Polyclonal Antibody	P08887	H	WB ELISA
ESAP14130	IL1R1 Polyclonal Antibody	P14778	H M	ELISA IHC
ENK5470	IL-1RII Polyclonal Antibody	P27930	H	WB ELISA
EAP0825	IL1RN Polyclonal Antibody	P18510	H M R	WB IHC IF
ENP0370	IL-2R $\beta$ (Phospho-Y364) Polyclonal Antibody	P14784	H M R Mk	WB ELISA
ESAP15132	IL2RB Polyclonal Antibody	P14784	H	ELISA WB IHC
ENT5605	IL-7R Polyclonal Antibody	P16871	H	WB ELISA
EAP1052	LAMP1 Polyclonal Antibody	P11279	H M R	WB IHC IF
ESAP15149	NCR3 Polyclonal Antibody	O14931	H	ELISA IHC
EAP0368	SDC1 Polyclonal Antibody	P18827	H M R	WB IHC
ESAP17281	TRIM22 Polyclonal Antibody	Q8IYM9	H	ELISA WB IHC
ENT0046	ABCB7 Polyclonal Antibody	O75027	H	WB IHC ELISA
EAP2738	AHSP Polyclonal Antibody	Q9NZD4	H	WB





## Hematopoietic progenitors

Cat. No.	Product Name	Swissprot	Reactivity	Application
ENP0524	Integrin $\beta$ 3 (Phospho-Y785) Polyclonal Antibody	P05106	H M R	WB ELISA
ENT2370	Integrin $\beta$ 3 Polyclonal Antibody	P05106	H M R	WB IHC ELISA
ESAP12186	ITGB3 (Phospho-Tyr785) Polyclonal Antibody	P05106	H M	WB
EPM12450	P-selectin Monoclonal Antibody	P16109	H;	ELISA IHC WB
EAP4261	FAM20A Polyclonal Antibody	Q96MK3	H M R	WB IHC
ENT1853	Gas6 Polyclonal Antibody	Q14393	H	WB IHC ELISA
EAP0389	HFE Polyclonal Antibody	Q30201	H	WB IHC IF
EAP2292	L3MBTL3 Polyclonal Antibody	Q96JM7	H	WB IHC IF
EAP0467	IL6R Polyclonal Antibody	P08887	H	WB
ESAP10409	LAMP2 Polyclonal Antibody	P13473	H	ELISA WB IHC
EAP1120	LAMP3 Polyclonal Antibody	Q9UQV4	H M R	WB IHC
ENT1543	Emp Polyclonal Antibody	Q7L5Y9	H M R	WB IHC ELISA
ESAP13658	MEIS1 Polyclonal Antibody	O00470	H M	ELISA IHC
ESAP16965	MEIS1 Polyclonal Antibody	O00470	H M	ELISA IHC
ENT2803	MNDA Polyclonal Antibody	P41218	H	WB IHC ELISA
ESAP17014	NMT1 Polyclonal Antibody	P30419	H M R	ELISA WB IHC
ESAP17109	TFRC Polyclonal Antibody	P02786	H M R	ELISA WB IHC
ENK5469	CD110 Polyclonal Antibody	P40238	H M R	WB ELISA
ESAP12770	ABCB1 Polyclonal Antibody	P08183	H	ELISA IHC
ESAP16521	ACE Polyclonal Antibody	P12821	H M R	ELISA WB IHC
ENT0053	ABCG2 Polyclonal Antibody	Q9UNQ0	H	WB IHC ELISA
ENT5612	BST-2 Polyclonal Antibody	Q10589	H	WB ELISA
ESAP13381	CD59 Polyclonal Antibody	P13987	H	ELISA WB IHC
EAP2713	CD84 Polyclonal Antibody	Q9UIB8	H	WB IHC IF
ESAP16459	CD93 Polyclonal Antibody	Q9NPY3	H M R	ELISA IHC

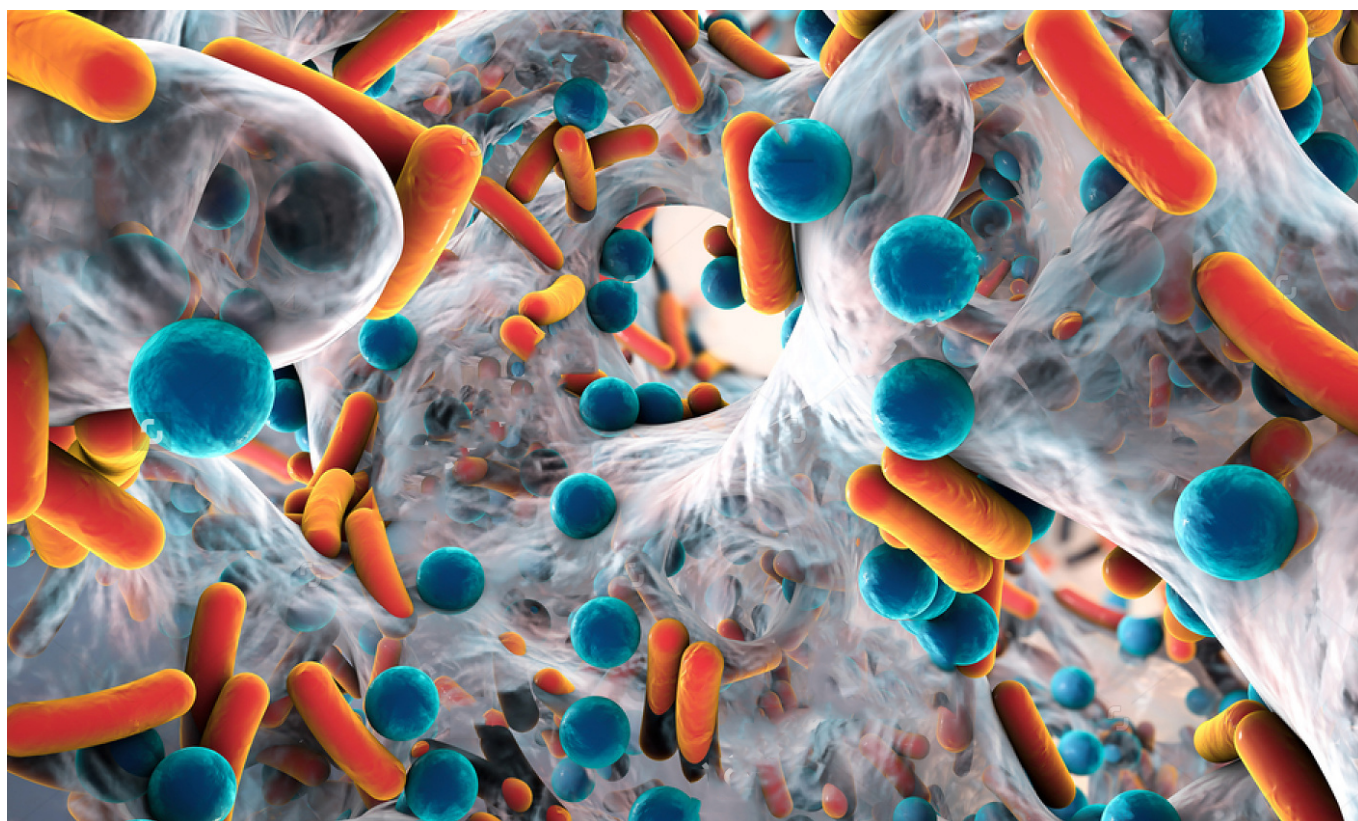


## Hematopoietic progenitors

Cat. No.	Product Name	Swissprot	Reactivity	Application
ESAP16696	CDCP1 Polyclonal Antibody	Q9H5V8	H	ELISA WB IHC
ESAP10415	DLK1 Polyclonal Antibody	P80370	H M	ELISA WB
ENP0552	EpoR (Phospho-Y368) Polyclonal Antibody	P19235	H M R	WB IF ELISA
ENP1205	EpoR (Phospho-Y426) Polyclonal Antibody	P19235	H M R	WB ELISA
ESAP12582	EPOR Polyclonal Antibody	P19235	H M R	ELISA WB IHC
ENT1587	EphB4 Polyclonal Antibody	P54760	H M	WB IHC IF ELISA
ENT1585	EphB1/2/3/4 Polyclonal Antibody	P54762/P29323/ P54753/P54760	H M	WB IHC ELISA
ENT5069	G-CSFR Polyclonal Antibody	Q99062	H	WB ELISA
ESAP12654	CSF3R Polyclonal Antibody	Q99062	H	ELISA IHC
EAP1865	HAS3 Polyclonal Antibody	O00219	H	WB IHC IF
ESAP14124	IL11RA Polyclonal Antibody	Q14626	H	ELISA WB
ESAP16895	JAG1 Polyclonal Antibody	P78504	H M R	ELISA IHC
ESAP13597	JAG2 Polyclonal Antibody	Q9Y219	H	ELISA IHC
ENT2988	N-cadherin Polyclonal Antibody	P19022	H M R	WB IHC IF ELISA
EAP1187	CDH2 Polyclonal Antibody	P19022	H M R	WB IHC
ESAP13052	NOTCH3 Polyclonal Antibody	Q9UM47	H M R	ELISA WB IHC
EAP1053	PRNP Polyclonal Antibody	P04156	H M R	WB
ENT5281	CD328 Polyclonal Antibody	Q9Y286	H	WB ELISA
ESAP13368	SIGLEC7 Polyclonal Antibody	Q9Y286	H	ELISA WB IHC
EAP3557	STAB2 Polyclonal Antibody	Q8WWQ8	H M R	WB
EAP0789	SLAMF1 Polyclonal Antibody	Q13291	H	WB
ESAP11207	SLAMF1 Polyclonal Antibody	Q13291	H	ELISA WB
ENK5350	CD10 Polyclonal Antibody	P08473	H M R	WB ELISA
ENP0379	CD40 (Phospho-T254) Polyclonal Antibody	P25942	H M	WB ELISA



## Lineage markers



Cat. No.	Product Name	Swissprot	Reactivity	Application
EAP0060	NEFL Polyclonal Antibody	P07196	H M R	WB IHC IF
ESAP17004	NEFM Polyclonal Antibody	P07197	H M R	ELISA WB IHC
ESAP17003	NEFH Polyclonal Antibody	P12036	H	ELISA IHC
ESAP16349	INA Polyclonal Antibody	Q16352	H M	ELISA WB IHC
ESAP14049	AGR2 Polyclonal Antibody	O95994	H M	ELISA WB IHC
EAP1127	EDA Polyclonal Antibody	Q92838	H M R	WB IHC
ESAP11342	EDA Polyclonal Antibody	Q92838	H M	ELISA IHC
ENT1733	FN1 Polyclonal Antibody	P02751	H M R	WB IHC ELISA
ENT0485	Bek Polyclonal Antibody	P21802	H M R	WB IHC IF ELISA
EAP0117	GATA2 Polyclonal Antibody	P23769	H M R	WB
EAP2496	GATA3 Polyclonal Antibody	P23771	H M R	WB
ESAP17178	NES Polyclonal Antibody	P48681	H	ELISA IHC
ESAP12673	LRP2 Polyclonal Antibody	P98164	H M R	ELISA IHC



## Lineage markers

Cat. No.	Product Name	Swissprot	Reactivity	Application
ENM0066	NSE Monoclonal Antibody	P09104	H M R	WB IHC
EAP1422	OTX2 Polyclonal Antibody	P32243	H M R	WB
EAP0550	PAX3 Polyclonal Antibody	P23760	H M R	WB IHC IF
EAP2327	PAX7 Polyclonal Antibody	P23759	H R	WB IHC
ENT4300	SIP1 Polyclonal Antibody	O60315	H M R	WB IHC ELISA
ESAP10736	ZEB2 Polyclonal Antibody	O60315	H M	ELISA IHC
ENT4371	Sox-9 Polyclonal Antibody	P48436	H M	WB IHC IF ELISA
EAP0203	SNAI2 Polyclonal Antibody	O43623	H M R	WB IHC IF
ENT0996	CNG-1 $\beta$ Polyclonal Antibody	Q14028	H M R	WB ELISA
ENT0273	ApoE Polyclonal Antibody	P02649	H M R	WB IHC ELISA
ESAP10116	ALB Polyclonal Antibody	P02768	H	ELISA WB IHC
EAP0516	CDX2 Polyclonal Antibody	Q99626	H M R	WB IHC
ENM0057	CDX2 Monoclonal Antibody	Q99626	H M R	WB IHC
ESAP15949	FOXA2 Polyclonal Antibody	Q9Y261	H M R	ELISA WB IHC
ENT5171	FGF-23 Polyclonal Antibody	Q9GZV9	H	WB ELISA
ENT1861	GATA-4 Polyclonal Antibody	P43694	H M R	WB IHC IF ELISA
ESAP12634	GATA6 Polyclonal Antibody	Q92908	H M R	ELISA IHC
EAP0256	GCG Polyclonal Antibody	P01275	H M R	WB IHC
EGM0336	GLP1 Polyclonal Antibody	P01275	H	WB
ENT1871	GCG Polyclonal Antibody	P01275	H M R Mk	WB IHC IF ELISA
ENT0955	Claudin-6 Polyclonal Antibody	P56747	H	WB IHC IF ELISA
EAP0509	FABP2 Polyclonal Antibody	P12104	H M R	WB
EGM0335	intestinal FABP Polyclonal Antibody	P12104	R M	IHC
ESAP16890	FABP2 Polyclonal Antibody	P12104	H M R	ELISA WB IHC
EAP3129	ISL1 Polyclonal Antibody	P61371	H M R	IHC IF



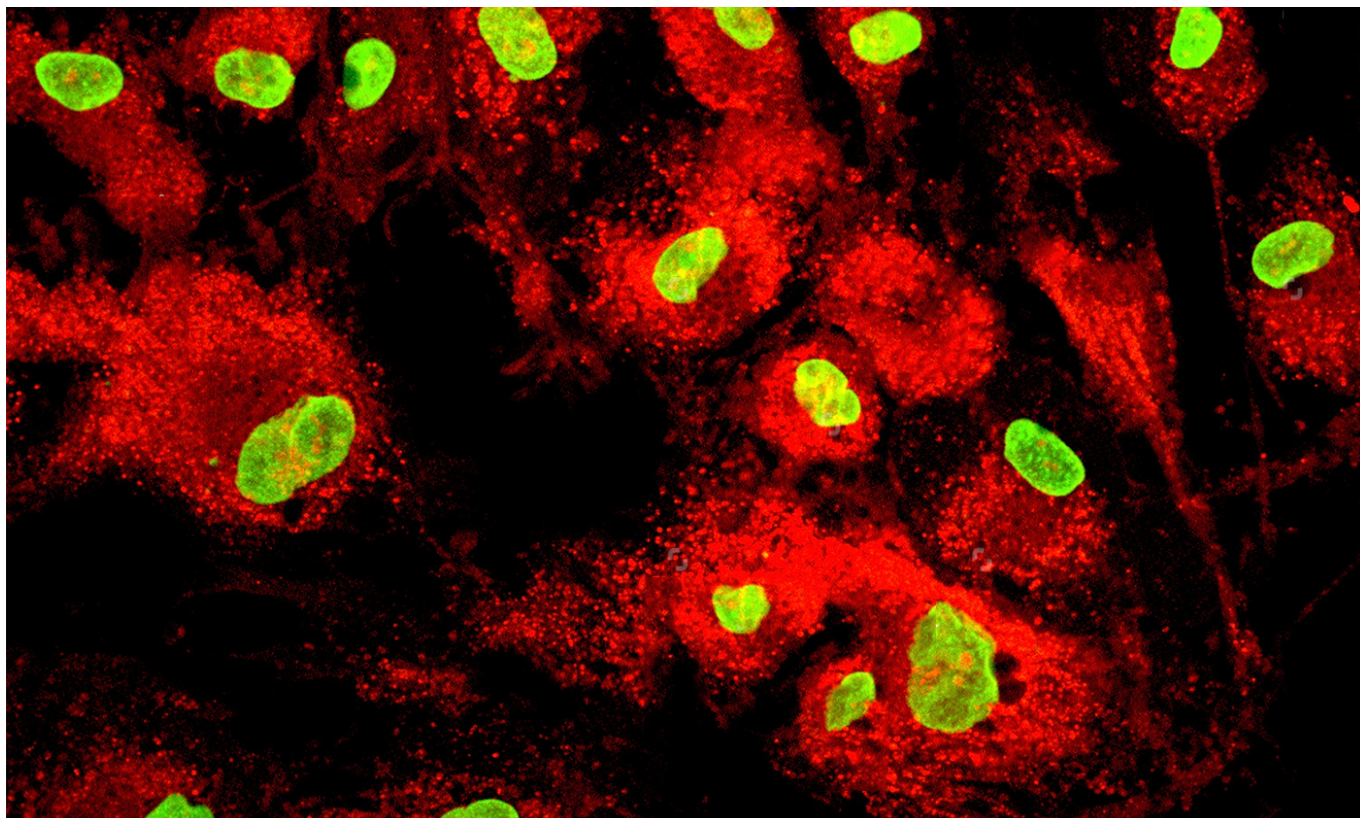


## Lineage markers

Cat. No.	Product Name	Swissprot	Reactivity	Application
EAP1510	NKX2-5 Polyclonal Antibody	P52952	H	WB
ESAP14655	SPARC Polyclonal Antibody	P09486	H M R	ELISA WB IHC
ESAP10757	SOX7 Polyclonal Antibody	Q9BT81	H M	ELISA WB
EAP2326	PAX6 Polyclonal Antibody	P26367	H M R	WB IHC IF
ESAP16165	PDX1 Polyclonal Antibody	P52945	H M R	ELISA WB IHC
ENT4365	Somatostatin Polyclonal Antibody	P61278	H M R	WB IHC ELISA
EAP1072	VIM Polyclonal Antibody	P08670	H M R	WB IF
ENM0158	Vimentin Monoclonal Antibody	P08670	H M R	WB
ENP0766	Vimentin (Phospho-S83) Polyclonal Antibody	P08670	H M R	WB IHC ELISA
ENP0767	Vimentin (Phospho-S56) Polyclonal Antibody	P08670	H	WB IHC ELISA
ENT4879	Vimentin Polyclonal Antibody	P08670	H	WB IHC IF ELISA
EAP2269	ACTA2 Polyclonal Antibody	P62736	H M R	WB IHC
ENT5053	$\alpha$ -SMA Polyclonal Antibody	P62736	H M R	WB IHC ELISA
EAP0295	ACTN1 Polyclonal Antibody	P12814	H M R	WB IHC
ENT0101	Actinin- $\alpha$ 1/2/3/4 Polyclonal Antibody	P12814/P35609/ Q08043/O43707	H M R	WB IHC ELISA
ESAP10325	TNNI3 Polyclonal Antibody	P19429	H M R	ELISA WB IHC
EAP0721	GPC3 Polyclonal Antibody	P51654	H M R	WB
ENT5206	Glypican-3 Polyclonal Antibody	P51654	H M R	WB ELISA
ENK5409	Inhibin $\beta$ -A Polyclonal Antibody	P08476	H M R	WB ELISA
ESAP10533	INHBA Polyclonal Antibody	P08476	H M R	ELISA WB IHC
ENP0374	LEF-1 (Phospho-S42) Polyclonal Antibody	Q9UJU2	H M R	WB ELISA
ENT2926	MYBPC1 Polyclonal Antibody	Q00872	H M R	WB ELISA
ESAP17017	NOX1 Polyclonal Antibody	Q9Y5S8	H M R	ELISA IHC
EAP1334	HFE2 Polyclonal Antibody	Q6ZVN8	H M R	WB
ENK5427	MYH-pan Polyclonal Antibody	P12882/Q9UKX2/P11055/ Q9Y623/P13533/P12883/ P13535	H M R	WB ELISA



## Mesenchymal stem cells



Cat. No.	Product Name	Swissprot	Reactivity	Application
ENC016	Adiponectin Polyclonal Antibody	Q15848	H	WB ELISA
EAP1016	ADIPOQ Polyclonal Antibody	Q15848	H M R	WB
EAP0035	FABP4 Polyclonal Antibody	P15090	H M R	WB IHC IF
ENT1930	Glut4 Polyclonal Antibody	P14672	H M R	WB IHC ELISA
EAP3918	LEP Polyclonal Antibody	P41159	M	WB IHC
EAP0073	PPARG Polyclonal Antibody	P37231	H M R	WB IHC IF
ENP0316	PPAR- $\gamma$ (Phospho-S112) Polyclonal Antibody	P37231	H M R	WB ELISA
EAP2429	ASPSCR1 Polyclonal Antibody	Q9BZE9	H M R	WB IHC IF
ESAP11260	COMP Polyclonal Antibody	P49747	H M R	ELISA WB IHC
EPM12283	Fibromodulin Monoclonal Antibody	Q06828	H;	ELISA WB IHC
ENT5563	TNAP Polyclonal Antibody	P05186	H R	WB ELISA
ESAP14055	ALPL Polyclonal Antibody	P05186	H M R	ELISA IHC



## Mesenchymal stem cells

Cat. No.	Product Name	Swissprot	Reactivity	Application
ESAP12723	KLF5 Polyclonal Antibody	Q13887	H M	ELISA WB IHC
EAP3478	WWTR1 Polyclonal Antibody	Q9GZV5	H M R	WB IHC
ENM0149	$\alpha$ skeletal muscle actin Monoclonal Antibody	P68133	H M R	WB IP
ENT5120	$\alpha$ -SMA Polyclonal Antibody	P68133	H M R	WB ELISA
EAP2221	BOC Polyclonal Antibody	Q9BWW1	H M R	WB IHC IF
EAP1306	FABP3 Polyclonal Antibody	P05413	H M R	WB IHC IF
ESAP15265	DMD Polyclonal Antibody	P11532	H M	ELISA IHC
ESAP15836	FGF8 Polyclonal Antibody	P55075	H M	ELISA WB
ESAP16823	GLMN Polyclonal Antibody	Q92990	H	ELISA IHC
EAP1055	MEF2C Polyclonal Antibody	Q06413	H M R	WB IHC
EAP1763	MEF2C(Phospho-S396) Polyclonal Antibody	Q06413	H	WB IF
ENT2702	MEF-2C Polyclonal Antibody	Q06413	H M	WB IHC ELISA
EAP2520	MYL2 Polyclonal Antibody	P10916	H M R	WB IHC IF
ENT2944	Myogenin Polyclonal Antibody	P15173	H M R	WB ELISA
ENT2929	Myf-5 Polyclonal Antibody	P13349	H M	WB ELISA
ENT2931	Myf-6 Polyclonal Antibody	P23409	H M R	WB IHC ELISA
ENT2947	Myomesin-2 Polyclonal Antibody	P54296	H M Mk	WB ELISA
ENT2895	MRTF-A Polyclonal Antibody	Q969V6	H M	WB IHC ELISA
EAP0058	MTM1 Polyclonal Antibody	Q13496	H M R	WB IHC
ESAP13810	RBM38 Polyclonal Antibody	Q9H0Z9	H M	ELISA WB IHC
EAP2514	SFRP2 Polyclonal Antibody	Q96HF1	H M R	WB IHC IF
ESAP16010	CSF2RA Polyclonal Antibody	P15509	H	ELISA WB IHC
EAP1176	CSF1R Polyclonal Antibody	P07333	H M R	WB
ENP0734	c-Fms (Phospho-Y561) Polyclonal Antibody	P07333	H M R	WB IHC ELISA



## Mesenchymal stem cells

Cat. No.	Product Name	Swissprot	Reactivity	Application
ENT0882	c-Fms Polyclonal Antibody	P07333	H M R	WB IHC ELISA
ESAP15091	BGN Polyclonal Antibody	P21810	H M R	ELISA WB IHC
ESAP13344	IBSP Polyclonal Antibody	P21815	H M	ELISA IHC
ENK5362	Troponin T-C Polyclonal Antibody	P45379	H M R	WB ELISA
ENT1024	COL4A1 Polyclonal Antibody	P02462	H M	WB IHC ELISA
ENT1025	COL4A2 Polyclonal Antibody	P08572	H M	WB IHC IF ELISA
EAP3780	COL4A5 Polyclonal Antibody	P29400	H	WB
ENC051	Cleaved-COL4A3 (L1425) Polyclonal Antibody	Q01955	H	WB ELISA
ENC078	Cleaved-Tumstatin (P1426) Polyclonal Antibody	Q01955	H Mk	WB ELISA
ENT1029	COL4A6 Polyclonal Antibody	Q14031	H	WB IHC IF ELISA
EAP3779	COL3A1 Polyclonal Antibody	P02461	H M R	WB
ENC050	Cleaved-COL3A1 (G1221) Polyclonal Antibody	P02461	H	WB ELISA
ENM0123	Collagen III Monoclonal Antibody	P02461	H M R	WB
ESAP14271	COL3A1 Polyclonal Antibody	P02461	H M R	ELISA IHC
ENT1022	COL2A1 Polyclonal Antibody	P02458	H M R	WB IHC IF ELISA
ENT1326	Desmin Polyclonal Antibody	P17661	H M R	WB IHC IF ELISA
EAP0545	DCN Polyclonal Antibody	P07585	H M R	WB IHC IF
EAP1095	FBXO32 Polyclonal Antibody	Q969P5	H M R	WB
ESAP15329	FGF18 Polyclonal Antibody	O76093	H M R	ELISA IHC
ENT3467	OPN Polyclonal Antibody	P10451	H M R	WB IHC ELISA
ENT3474	OSR2 Polyclonal Antibody	Q8N2R0	H M R	WB ELISA
ENT0498	BMP-2 Polyclonal Antibody	P12643	H M R	WB IHC ELISA
ENT4192	RUNX2 Polyclonal Antibody	Q13950	H M	WB IHC ELISA
ENK5413	TPO Polyclonal Antibody	P40225	H	WB ELISA



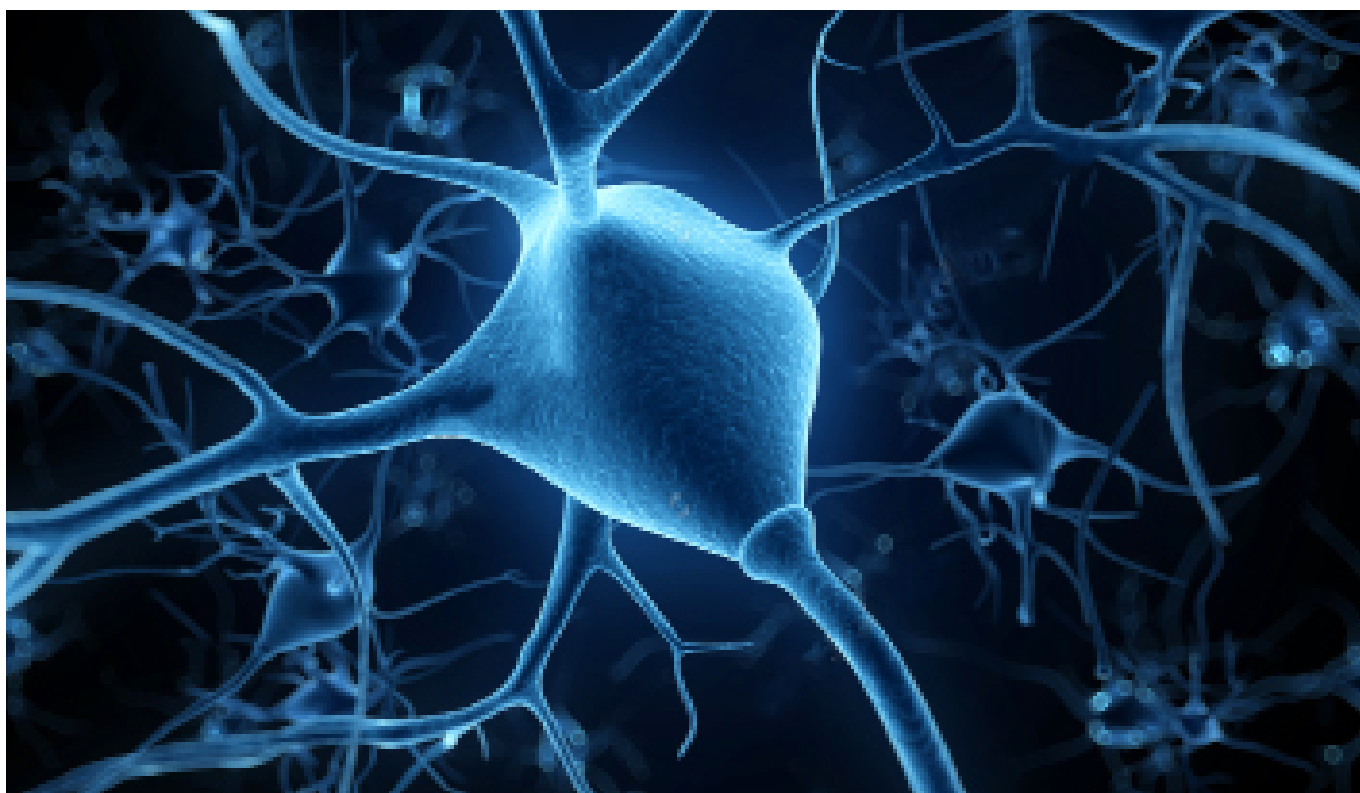


## Mesenchymal stem cells

Cat. No.	Product Name	Swissprot	Reactivity	Application
ENT0506	BMP-8B Polyclonal Antibody	P34820	H	WB ELISA
ESAP11295	CYR61 Polyclonal Antibody	O00622	H M R	ELISA WB IHC
ESAP17061	PDGFC Polyclonal Antibody	Q9NRA1	H M R	ELISA IHC
ESAP15719	STC2 Polyclonal Antibody	O76061	H M R	ELISA IHC
ESAP12891	TNC Polyclonal Antibody	P24821	H M	ELISA IHC
EAP2406	WISP2 Polyclonal Antibody	O76076	H M R	WB
EAP0761	BMPR1B Polyclonal Antibody	O00238	H M R	WB IHC IF
ESAP14737	BMPR2 Polyclonal Antibody	Q13873	H M	ELISA IHC
ESAP10117	CEACAM5 Polyclonal Antibody	P06731	H	ELISA WB IHC
ENM0061	Carcinoembryonic Antigen Monoclonal Antibody	P06731	H	IHC
ENT1018	COL1A2 Polyclonal Antibody	P08123	H M R	IHC IF ELISA
ESAP16351	NGFR Polyclonal Antibody	P08138	H M R	ELISA WB IHC
EAP0534	PTHLH Polyclonal Antibody	P12272	H M R	WB IHC
EAP0448	TNFRSF1A Polyclonal Antibody	P19438	H M	WB IF
EPM12536	VCAM-1 Monoclonal Antibody	P19320	H;	ELISA WB IHC



## Neural stem cells



Cat. No.	Product Name	Swissprot	Reactivity	Application
ENT1251	Cystatin C Polyclonal Antibody	P01034	H M R Mk	WB ELISA
ESAP12448	CST3 Polyclonal Antibody	P01034	H	ELISA WB IHC
ESAP15833	FGF2 Polyclonal Antibody	P09038	H M R	ELISA WB IHC
ENT5654	GDF-7 Polyclonal Antibody	Q7Z4P5	H M R	WB ELISA
ENT1701	FGFR-3 Polyclonal Antibody	P22607	H M R	WB IHC ELISA
ENM0059	GFAP Monoclonal Antibody	P14136	R M	WB
ENT1894	GFAP Polyclonal Antibody	P14136	H	WB IHC IF ELISA
EPM12299	GFAP Monoclonal Antibody	P14136	H M R;	ELISA WB IHC
EAP0116	S100B Polyclonal Antibody	P04271	M R	WB
EGM0340	S100 beta Polyclonal Antibody	P04271ew	H R M	IHC
EAP2182	ACTL6B Polyclonal Antibody	O94805	H M R	WB IHC IF
ENT1360	Dlx-5 Polyclonal Antibody	P56178	H M R	WB IHC IF ELISA
EAP3832	EYA3 Polyclonal Antibody	Q99504	H M R	WB IHC
ENC069	Cleaved-Notch 2 (D1733) Polyclonal Antibody	Q04721	H M R	WB IHC ELISA



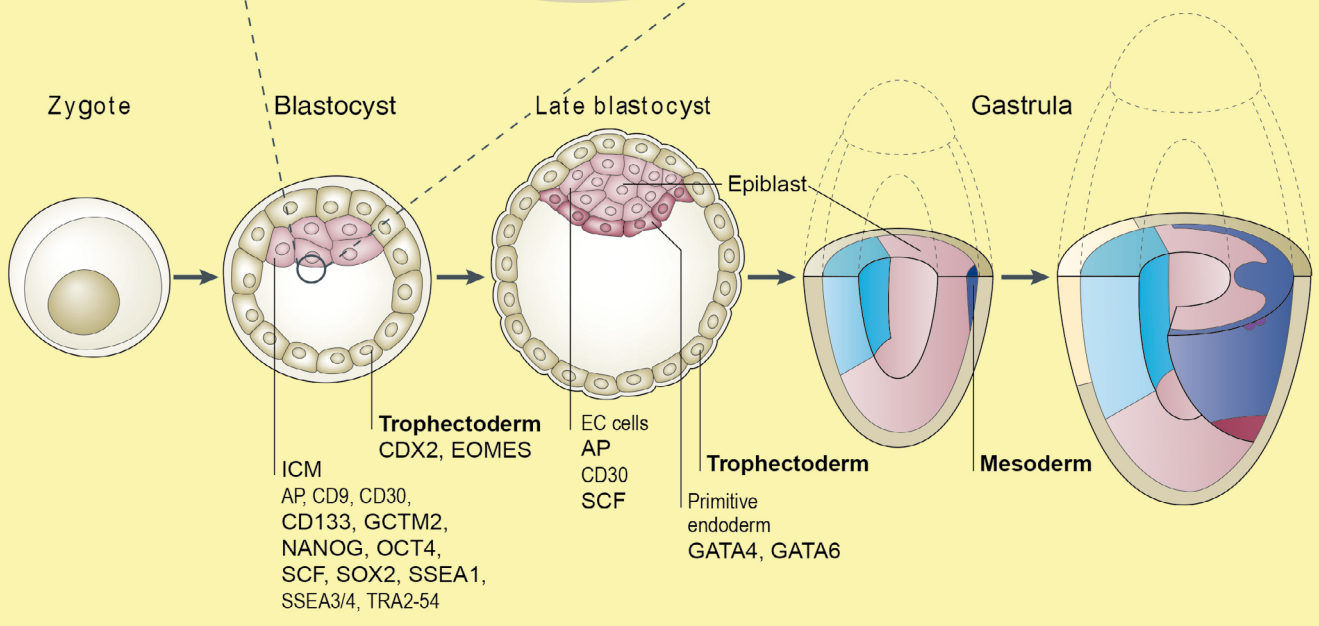
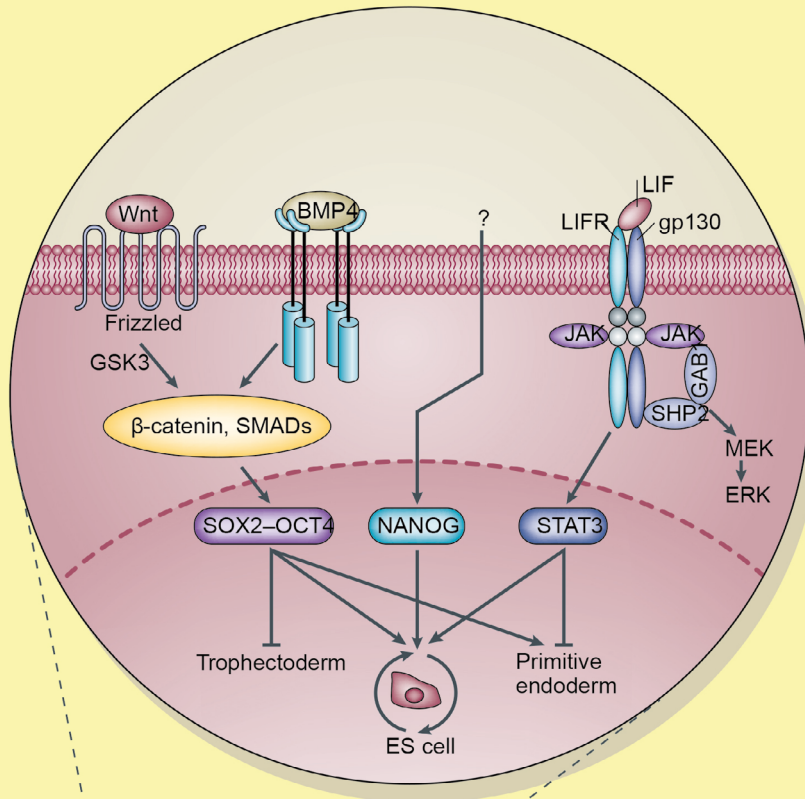
## Neural stem cells

Cat. No.	Product Name	Swissprot	Reactivity	Application
ENT2261	Hub/D Polyclonal Antibody	Q12926/P26378	H M R	WB IHC IF ELISA
ENT1549	Emx1 Polyclonal Antibody	Q04741	H M R	WB ELISA
ESAP16840	HES5 Polyclonal Antibody	Q5TA89	H M R	ELISA WB
ESAP16035	HMG2 Polyclonal Antibody	P52926	H M	ELISA WB
ENT2384	IPMK Polyclonal Antibody	Q8NFU5	H M R Mk	WB IHC ELISA
EAP0064	OLFM1 Polyclonal Antibody	Q99784	H M R	WB IHC
ESAP13040	NEUROG1 Polyclonal Antibody	Q92886	H	ELISA WB IHC
ENT3066	Neuroglycan C Polyclonal Antibody	O95196	H M R	WB ELISA
EAP3650	NEDD1 Polyclonal Antibody	Q8NHV4	H M R	WB
ENT3062	Neuro D2 Polyclonal Antibody	Q15784	H M R	WB IHC ELISA
EAP2405	NR2E1 Polyclonal Antibody	Q9Y466	H M R	WB IHC IF
ESAP17057	PCSK9 Polyclonal Antibody	Q8NBP7	H	ELISA WB
ENT4927	ZAC1 Polyclonal Antibody	Q9UM63	H	WB ELISA
ESAP12876	SOX1 Polyclonal Antibody	O00570	H M	ELISA WB
ESAP13938	SOX11 Polyclonal Antibody	P35716	H M R	ELISA WB IHC
EAP1043	MAP2 Polyclonal Antibody	P11137	H R	WB IHC
ENM0067	MAP2 Monoclonal Antibody	P11137	H M R	IHC
ENC067	Cleaved-Notch 1 (V1754) Polyclonal Antibody	P46531	H M R	WB IHC ELISA
ENT1448	EAAT1 Polyclonal Antibody	P43003	H	WB ELISA
ENP0509	FGFR-4 (Phospho-Y642) Polyclonal Antibody	P22455	H M R	WB ELISA
ENT1789	Frizzled-9 Polyclonal Antibody	O00144	H M Mk	WB IF ELISA
ENT5248	Integrin $\alpha$ 4 Polyclonal Antibody	P13612	H M R	WB ELISA
ESAP13632	LLGL1 Polyclonal Antibody	Q15334	H	ELISA IHC
ESAP16934	LLGL1 Polyclonal Antibody	Q15334	H	ELISA WB
ENC068	Cleaved-Notch 2 (A1734) Polyclonal Antibody	Q04721	H M R	WB ELISA
ESAP16358	NOTCH2 Polyclonal Antibody	Q04721	H M R	ELISA WB IHC



# Signaling pathways

## Stem cells pathway







## Signaling pathways

Cat. No.	Product Name	Swissprot	Reactivity	Application
EAP1804	ATO1H Polyclonal Antibody	Q92858	H	WB IHC IF
ESAP11609	NCSTN Polyclonal Antibody	Q92542	H M R	ELISA WB IHC
ESAP13050	NOTCH1 Polyclonal Antibody	P46531	H R	ELISA WB IHC
ENC071	Cleaved-Notch 4 (V1432) Polyclonal Antibody	Q99466	H Mk	WB ELISA
ESAP16359	NOTCH4 Polyclonal Antibody	Q99466	H	ELISA IHC
ESAP11622	NUMB Polyclonal Antibody	P49757	H M R	ELISA WB
EPM12404	NUMBL Monoclonal Antibody	Q9Y6R0	H;	ELISA WB IHC IF
EAP1529	RBPJ Polyclonal Antibody	Q06330	H M R	WB IHC IF
ESAP10147	ACVR1B Polyclonal Antibody	P36896	H M R	ELISA WB IHC
ENT0198	ALK-1 Polyclonal Antibody	P37023	H M R	WB IHC IF ELISA
ESAP12946	AMH Polyclonal Antibody	P03971	H M R	ELISA IHC
ESAP10951	AMHR2 Polyclonal Antibody	Q16671	H M R	ELISA IHC
ESAP14207	BMP4 Polyclonal Antibody	P12644	H M R	ELISA WB IHC
ENT0501	BMP-5 Polyclonal Antibody	P22003	H M	WB IHC ELISA
ESAP13341	BMP6 Polyclonal Antibody	P22004	H M R	ELISA WB IHC
ENT0503	BMP-7 Polyclonal Antibody	P18075	H M R	WB IHC ELISA
EAP1806	BAMBI Polyclonal Antibody	Q13145	H R	WB IHC IF
ENP0069	c-Myc (Phospho-T58) Polyclonal Antibody	P01106	H M R	WB IHC IP ELISA
ENP0861	c-Myc (Phospho-S62) Polyclonal Antibody	P01106	H M R	WB IHC IF ELISA
ENT0993	c-Myc Polyclonal Antibody	P01106	H M R	WB IHC IF ELISA
ESAP12066	MYC (Phospho-Ser373) Polyclonal Antibody	P01106	H M R	WB IHC
ESAP10107	c-Myc Tag Polyclonal Antibody	P01106	Fusion proteins containing the c-Myc Tag	ELISA WB IHC
EAP1393	TFDP1 Polyclonal Antibody	Q14186	H M R	WB IHC IF
ENK025	E2F-4 (Acetyl-K96) Polyclonal Antibody	Q16254	H M R	WB ELISA



## Signaling pathways

Cat. No.	Product Name	Swissprot	Reactivity	Application
ESAP12561	E2F4 Polyclonal Antibody	Q16254	H M	ELISA IHC
ENT1444	E2F-4/5 Polyclonal Antibody	Q16254/Q15329	H M R Mk	WB IHC ELISA
ESAP11343	EDA2R Polyclonal Antibody	Q9HAV5	H	ELISA WB IHC
EAP0031	MAPK3 Polyclonal Antibody	P27361	H M R	WB IHC IF
ENT1622	ERK 1 Polyclonal Antibody	P27361	H M R	WB IF ELISA
ENP0100	ERK 1/2 (Phospho-T202) Polyclonal Antibody	P27361/P28482	H M R	WB ELISA
ENP0101	ERK 1/2 (Phospho-Y204) Polyclonal Antibody	P27361/P28482	H M R	WB IHC IF ELISA
ENP1197	ERK 1/2 (Phospho-T202/Y204) Polyclonal Antibody	P27361/P28482	H M R	WB IHC ELISA
ENT1625	ERK 1/2 Polyclonal Antibody	P27361/P28482	H M R	WB IHC ELISA
ENT1627	ERK 2 Polyclonal Antibody	P28482	H M R	WB IHC IF ELISA
ENP0497	ERK 1/2 (Phospho-Y222/205) Polyclonal Antibody	P28482/P27361	H M R	WB ELISA
ESAP12656	GDF1 Polyclonal Antibody	P27539	H M	ELISA WB
EAP3333	GDF5 Polyclonal Antibody	P43026	H M R	WB IHC
ESAP14367	GDF9 Polyclonal Antibody	O60383	H M	ELISA WB IHC
ESAP16866	ID2 Polyclonal Antibody	Q02363	H M R	ELISA IHC
EAP2513	ID3 Polyclonal Antibody	Q02535	H M R	WB IHC IF
ENT2272	Id4 Polyclonal Antibody	P47928	H M R	WB IHC ELISA
ENT2279	IFN- $\gamma$ Polyclonal Antibody	P01579	H	WB IHC ELISA
ESAP13570	IFNGR2 Polyclonal Antibody	P38484	H M	ELISA WB IHC
ENT3508	p300 Polyclonal Antibody	Q09472	H	WB IHC ELISA
ENT5647	Lefty Polyclonal Antibody	O75610/O00292	H M	WB ELISA
ENT1629	ERK 3 Polyclonal Antibody	Q16659	H M R	WB ELISA
ESAP15936	MAPK6 Polyclonal Antibody	Q16659	H M R	ELISA IHC
EAP3761	CDKN2B Polyclonal Antibody	P42772	H M R	WB
ENT3492	p15 Polyclonal Antibody	P42772	H M R	WB IHC IF ELISA



## Signaling pathways

Cat. No.	Product Name	Swissprot	Reactivity	Application
EAP4361	Smad1 Polyclonal Antibody	Q15797	H M	WB IHC IF ELISA
ENT4323	SMAD1 (Phospho-Ser206) Polyclonal Antibody	Q15797	H M R	WB
ESAP12229	Smad1 (Phospho-S465) Polyclonal Antibody	Q15797	H M R	WB IHC ELISA
ENP0583	Smad1/5/9 Polyclonal Antibody	Q15797/Q99717/ O15198	H M R	WB IHC ELISA
ENT4325	Smad2 (Phospho-S467) Polyclonal Antibody	Q15796	H M R	WB IHC ELISA
ENP0584	Smad2 Polyclonal Antibody	Q15796	H M R	WB IHC IF ELISA
ENT4331	SMAD2 (Phospho-Thr220) Polyclonal Antibody	Q15796	H M R	WB
ESAP12204	Smad2/3 (Phospho-T8) Polyclonal Antibody	Q15796/P84022	H M R	WB ELISA
ENP0362	Smad2/3 Polyclonal Antibody	Q15796/P84022	H M R Mk	WB IHC ELISA
ENT4332	Smad3 (Phospho-S204) Polyclonal Antibody	P84022	H M R	WB IHC IF ELISA
ENP0363	Smad3 (Phospho-S425) Polyclonal Antibody	P84022	H M R	WB IHC ELISA
ENP0585	Smad3 (Phospho-T179) Polyclonal Antibody	P84022	H M R	WB IHC ELISA
ENP0745	Smad3 (Phospho-S208) Polyclonal Antibody	P84022	H M R	WB IHC ELISA
ENP0746	Smad3 Polyclonal Antibody	P84022	H M R	WB IHC ELISA
ENT4336	SMAD4 Polyclonal Antibody	Q13485	H M R	ELISA WB IHC
ESAP10193	SMAD5 Polyclonal Antibody	Q99717	H M R	ELISA WB IHC
ESAP10192	SMAD6 Polyclonal Antibody	O43541	H M R	WB
EAP3149	SMAD7 Polyclonal Antibody	O15105	H M R	ELISA WB IHC
ESAP12872	SMAD9 Polyclonal Antibody	O15198	H M	ELISA WB IHC
ESAP16614	SMURF2 Polyclonal Antibody	Q9HAU4	H M	ELISA IHC
ESAP16287	Sp1 (Phospho-T739) Polyclonal Antibody	P08047	H M R Mk	WB IHC ELISA
ENP0248	Sp1 Polyclonal Antibody	P08047	H M R	WB IHC IF ELISA
ENT4372	SP1 (Phospho-Thr739) Polyclonal Antibody	P08047	H R	WB
ESAP12165	TGFB1 Polyclonal Antibody	P01137	H M R	ELISA WB IHC
ESAP10795	TGFβ2 Polyclonal Antibody	P61812	H M R	WB IHC ELISA



# Signaling pathways

Cat. No.	Product Name	Swissprot	Reactivity	Application
ENT4633	TGFβ2 Polyclonal Antibody	P61812	H M R	WB IHC ELISA
ENT4634	TGFβ3 Polyclonal Antibody	P10600	H M R Mk	WB IHC ELISA
ENP1191	TGFβ RI (Phospho-S165) Polyclonal Antibody	P36897	H M R	IF ELISA
ENT4627	TGFβ RI Polyclonal Antibody	P36897	H M R	WB IF ELISA
ENT4629	TGFβ RII Polyclonal Antibody	P37173	H M R	WB IHC ELISA
ENT4630	TGFβ RIII Polyclonal Antibody	Q03167	H M R	IHC ELISA
ESAP13276	THBS1 Polyclonal Antibody	P07996	H M	ELISA WB IHC
ENT0010	14-3-3 θ Polyclonal Antibody	P27348	H M R	WB IHC IF ELISA
ENT0011	14-3-3 θ/r Polyclonal Antibody	P27348	H M R	WB IHC IF ELISA
ESAP16129	YWHAB Polyclonal Antibody	P31946	H M R	ELISA WB IHC
EAP0190	SFN Polyclonal Antibody	P31947	H M R	WB IHC IF
EPM12697	14-3-3 sigma Monoclonal Antibody	P31947	H;	ELISA IHC WB IF
ESAP16130	YWHAG Polyclonal Antibody	P61981	H M R	ELISA WB IHC
ESAP16128	YWHAE Polyclonal Antibody	P62258	H M R	ELISA WB IHC
EAP3326	YWHAZ Polyclonal Antibody	P63104	H	WB
ENP0853	14-3-3 ζ (Phospho-S58) Polyclonal Antibody	P63104	H M R	WB IHC IF ELISA
ENT0007	14-3-3 ζ Polyclonal Antibody	P63104	H M R	WB IHC IP IF ELISA
ESAP12129	YWHAZ (Phospho-Ser58) Polyclonal Antibody	P63104	H M R	WB IHC IF
EAP3705	AES Polyclonal Antibody	Q08117	H M R	WB IHC IF
ESAP10332	CTNNA1 Polyclonal Antibody	P35221	H M	ELISA WB IHC
ESAP12207	CTNNA1 (Phospho-Ser641) Polyclonal Antibody	P35221	H M	WB
ENT0669	Catenin-α E/N Polyclonal Antibody	P35221/P26232	H M R	WB IHC IF ELISA
ENT0229	Angptl7 Polyclonal Antibody	O43827	H M	WB IHC ELISA
ENT0258	APC Polyclonal Antibody	P25054	H M R	WB IHC IF ELISA
ESAP15079	AXIN2 Polyclonal Antibody	Q9Y2T1	H M R	ELISA WB IHC





## Signaling pathways

Cat. No.	Product Name	Swissprot	Reactivity	Application
EAP0807	CTNNB1 Polyclonal Antibody	P35222	H M R	WB IHC
ENM0065	$\beta$ -Catenin Monoclonal Antibody	P35222	H M R	WB IHC
ENP0047	Catenin- $\beta$ (Phospho-S37) Polyclonal Antibody	P35222	H M R	WB IHC IF ELISA
ENP0048	Catenin- $\beta$ (Phospho-T41/S45) Polyclonal Antibody	P35222	H M R	WB ELISA
ENP0049	Catenin- $\beta$ (Phospho-Y654) Polyclonal Antibody	P35222	H M R	WB IHC ELISA
ENP1204	Catenin- $\beta$ (Phospho-S552) Polyclonal Antibody	P35222	H M R	WB ELISA
ENT0672	Catenin- $\beta$ Polyclonal Antibody	P35222	H M R	WB IHC IF ELISA
ESAP12150	CTNNB1 (Phospho-Ser33) Polyclonal Antibody	P35222	H M R	WB IHC
ESAP12483	SMARCA4 Polyclonal Antibody	P51532	H M R	ELISA WB IHC
EAP3573	C8orf4 Polyclonal Antibody	Q9NR00	H M R	IHC
ENP0392	Casein Kinase I $\alpha$ (Phospho-Y321) Polyclonal Antibody	P48729	H M R	WB IHC ELISA
ENT0646	Casein Kinase I $\alpha$ Polyclonal Antibody	P48729	H M R	WB IHC IF ELISA
ESAP12506	CSNK1A1 Polyclonal Antibody	P48729	H M	ELISA WB IHC
ENP0782	Casein Kinase I $\alpha$ (Phospho-Y294) Polyclonal Antibody	P48729/Q8N752	H M R	WB IHC ELISA
ESAP15196	CSNK1D Polyclonal Antibody	P48730	H M R	ELISA WB IHC
ENP0732	Casein Kinase II $\beta$ (Phospho-S209) Polyclonal Antibody	P67870	H M R	WB IHC ELISA
ENT0644	Casein Kinase II $\beta$ Polyclonal Antibody	P67870	H M R	WB IHC ELISA
EAP4122	CER1 Polyclonal Antibody	O95813	H	WB
ENK5410	Cerberus Polyclonal Antibody	O95813	H R	WB ELISA
ESAP11274	CTNNBIP1 Polyclonal Antibody	Q9NSA3	H M	ELISA IHC
ENT1119	CRP1 Polyclonal Antibody	P21291	H M R	WB IHC ELISA
ENT0647	Casein Kinase I $\gamma$ 1 Polyclonal Antibody	Q9HCP0	H M R Mk	WB IHC IF ELISA
ESAP11278	CXXC5 Polyclonal Antibody	Q7LFL8	H M R	ELISA WB IHC
EAP0526	CTNND1 Polyclonal Antibody	O60716	H M R	WB IHC IF
ENP0919	p120 (Phospho-Y228) Polyclonal Antibody	O60716	H M R	WB IHC IF ELISA



## Signaling pathways

Cat. No.	Product Name	Swissprot	Reactivity	Application
ENT3486	p120 Polyclonal Antibody	O60716	H M R	WB IHC ELISA
ESAP16739	DAAM1 Polyclonal Antibody	Q9Y4D1	H M	ELISA WB IHC
EAP2413	DAAM2 Polyclonal Antibody	Q86T65	H M R	WB
ESAP14304	DKK1 Polyclonal Antibody	O94907	H M	ELISA WB
ESAP10417	DKK4 Polyclonal Antibody	Q9UBT3	H	ELISA IHC
ESAP10418	DKK2 Polyclonal Antibody	Q9UBU2	H M	ELISA IHC
ESAP14306	DKK2 Polyclonal Antibody	Q9UBU2	H M	ELISA WB
EAP1004	DKK3 Polyclonal Antibody	Q9UBP4	H M R	WB IHC
ESAP14305	DKK3 Polyclonal Antibody	Q9UBP4	H M	ELISA WB IHC
ESAP13482	AMER1 Polyclonal Antibody	Q5JTC6	H M	ELISA IHC
ENT1773	Frizzled-1 Polyclonal Antibody	Q9UP38	H	WB IF ELISA
ENT1786	Frizzled-7 Polyclonal Antibody	O75084	H M	WB IF ELISA
ENT1775	Frizzled-10 Polyclonal Antibody	Q9ULW2	H M Mk	WB IHC IF ELISA
ESAP12910	FZD2 Polyclonal Antibody	Q14332	H M R	ELISA IHC
ESAP16237	FZD2 Polyclonal Antibody	Q14332	H M R	ELISA WB
ESAP10845	FZD4 Polyclonal Antibody	Q9ULV1	H M R	ELISA WB IHC
ESAP16480	FZD8 Polyclonal Antibody	Q9H461	H M R	ELISA IHC
EAP1847	FRZB Polyclonal Antibody	Q92765	H	WB IHC IF
ENT1777	Frizzled-3 Polyclonal Antibody	Q9NPG1	H M	WB IF ELISA
ESAP14454	LGR5 Polyclonal Antibody	O75473	H M R	ELISA IHC
EAP3107	GSK3A(Phospho-S21) Polyclonal Antibody	P49840	H	WB
ENP0122	GSK3 $\alpha$ (Phospho-S21) Polyclonal Antibody	P49840	H M R	WB IHC IP ELISA
ENT2080	GSK3 $\alpha$ Polyclonal Antibody	P49840	H M R	WB IHC IP ELISA
ESAP12054	GSK3A (Phospho-Ser21) Polyclonal Antibody	P49840	H M R	WB IHC IF
ENP0123	GSK3 $\alpha/\beta$ (Phospho-Y279/216) Polyclonal Antibody	P49840/P49841	H M R	WB IHC ELISA



## Signaling pathways

Cat. No.	Product Name	Swissprot	Reactivity	Application
ENT2081	GSK3α/β Polyclonal Antibody	P49840/P49841	H M R	WB IHC ELISA
EAP1740	GSK3B(Phospho-S9) Polyclonal Antibody	P49841	H	WB
ENP0285	GSK3β (Phospho-S9) Polyclonal Antibody	P49841	H M R	WB IHC ELISA
ENT2082	GSK3β Polyclonal Antibody	P49841	H M R	WB IHC IP ELISA
ESAP12195	GSK3B (Phospho-Tyr216) Polyclonal Antibody	P49841	H M R	WB IHC IF
ENP0366	HBP1 (Phospho-S402) Polyclonal Antibody	O60381	H	WB IHC ELISA
ENT2103	HBP1 Polyclonal Antibody	O60381	H M R Mk	WB IHC ELISA
ENT2145	Histone deacetylase 1 Polyclonal Antibody	Q13547	H M R	WB IHC IF ELISA
ENT2113	HDAC2 Polyclonal Antibody	Q92769	H M R Mk	WB IHC ELISA
ESAP12135	HDAC2 (Phospho-Ser394) Polyclonal Antibody	Q92769	H M R	WB IHC IF
ENT2114	HDAC3 Polyclonal Antibody	O15379	H M R	WB IHC IF ELISA
EAP0042	HDAC4 Polyclonal Antibody	P56524	H M R	WB IHC IF
ENP0125	HDAC4 (Phospho-S632) Polyclonal Antibody	P56524	H M R	WB ELISA
ESAP12214	HDAC4/HDAC5/HDAC9 (phospho-Ser246/259/220) Polyclonal Antibody	P56524/Q9UQL6/Q9UKV0	H	WB IHC
ENP0126	HDAC5 (Phospho-S498) Polyclonal Antibody	Q9UQL6	H M	WB IHC IF ELISA
ENT2116	HDAC5 Polyclonal Antibody	Q9UQL6	H M	WB IHC IF ELISA
ESAP12136	HDAC5 (Phospho-Ser498) Polyclonal Antibody	Q9UQL6	H M R	WB IHC
ENP0299	HDAC5/9 (Phospho-S259/220) Polyclonal Antibody	Q9UQL6/Q9UKV0	H M	WB IHC ELISA
ENT2117	HDAC5/9 Polyclonal Antibody	Q9UQL6/Q9UKV0	H M	WB IHC ELISA
ENP0922	HDAC6 (Phospho-S22) Polyclonal Antibody	Q9UBN7	H M	WB IHC IF ELISA
ENT2147	Histone deacetylase 6 Polyclonal Antibody	Q9UBN7	H M	WB IHC IF ELISA
ESAP16034	HDAC7 Polyclonal Antibody	Q8WUI4	H M	ELISA WB IHC
ENP0127	HDAC8 (Phospho-S39) Polyclonal Antibody	Q9BY41	H M R	WB IHC ELISA
ESAP14392	HDAC8 Polyclonal Antibody	Q9BY41	H M R	ELISA WB IHC
ENT2146	Histone deacetylase 10 Polyclonal Antibody	Q969S8	H M R Mk	WB IHC ELISA



## Signaling pathways

Cat. No.	Product Name	Swissprot	Reactivity	Application
ENT2132	Hic-5 Polyclonal Antibody	O43294	H M R	IHC IF ELISA
EAP4300	HS1BP3 Polyclonal Antibody	Q53T59	H	WB
ENK5478	CD225 Polyclonal Antibody	P13164	H	WB ELISA
ESAP12488	CREBBP Polyclonal Antibody	Q92793	H M R	ELISA IHC
ESAP14444	KIF3A Polyclonal Antibody	Q9Y496	H M	ELISA WB IHC
EAP3145	LRP5 Polyclonal Antibody	O75197	H M R	WB IHC
ESAP13656	MDFIC Polyclonal Antibody	Q9P1T7	H	ELISA IHC
EAP0732	NDP Polyclonal Antibody	Q00604	H M R	WB
ESAP11101	CBY1 Polyclonal Antibody	Q9Y3M2	H M R	ELISA IHC
EPM12469	RSPO3 Monoclonal Antibody	Q9BXY4	H;	ELISA WB
ESAP16416	SFRP1 Polyclonal Antibody	Q8N474	H M	ELISA IHC
ENT1790	FRP-2 Polyclonal Antibody	Q96HF1	H M R	WB ELISA
EAP2693	SFRP4 Polyclonal Antibody	Q6FHJ7	H M R	WB IHC IF
ESAP12574	SFRP5 Polyclonal Antibody	Q5T4F7	H M	ELISA IHC
ENT4297	Siah-2 Polyclonal Antibody	O43255	H M R	WB IHC ELISA
ENT4579	TCF-3 Polyclonal Antibody	P15923	H M R	WB IHC ELISA
EAP0276	TCF4 Polyclonal Antibody	P15884	H M R	WB IHC IF
ENT4580	TCF-4/12 Polyclonal Antibody	P15884/Q99081	H M R	WB IHC ELISA
ENT4577	TCF-1 Polyclonal Antibody	P36402	H M	WB IHC ELISA
ESAP16215	TCF7 Polyclonal Antibody	P36402	H M	ELISA WB
ENT5078	TCF-19 Polyclonal Antibody	Q9Y242	H M R	WB ELISA
EAP1442	TLE1 Polyclonal Antibody	Q04724	H M R	WB IHC IF
ENT4671	TLE4 Polyclonal Antibody	Q04727	H M R	WB IHC ELISA
EAP1365	WIF1 Polyclonal Antibody	Q9Y5W5	H M R	WB IHC IF
ESAP16533	WNT1 Polyclonal Antibody	P04628	H M	ELISA WB IHC



## Signaling pathways

Cat. No.	Product Name	Swissprot	Reactivity	Application
EAP1670	WNT2 Polyclonal Antibody	P09544	H M R	WB IHC
ESAP15171	WNT3A Polyclonal Antibody	P56704	H M	ELISA WB IHC
EAP3533	WNT4 Polyclonal Antibody	P56705	H M R	WB
EAP3620	WNT5B Polyclonal Antibody	Q9H1J7	H M	WB IHC
EAP3321	WNT7B Polyclonal Antibody	P56706	H	WB
ESAP14732	WNT9A Polyclonal Antibody	O14904	H M	ELISA WB
ESAP14911	WNT11 Polyclonal Antibody	O96014	H M	ELISA IHC
ENT5106	Wnt-16 Polyclonal Antibody	Q9UBV4	H M R	WB ELISA
EAP3357	BAZ1B Polyclonal Antibody	Q9UIG0	H M R	WB
ESAP10846	VANGL1 Polyclonal Antibody	Q8TAA9	H M	ELISA WB IHC
ESAP16484	VANGL2 Polyclonal Antibody	Q9ULK5	H M R	ELISA WB IHC
ESAP13444	DHH Polyclonal Antibody	O43323	H	ELISA IHC
ESAP16814	GAS1 Polyclonal Antibody	P54826	H	ELISA WB IHC
ESAP15427	IHH Polyclonal Antibody	Q14623	H M	ELISA IHC
ENM0063	Kif 7 Monoclonal Antibody	Q2M1P5	H M R	IHC
ESAP10715	PTCH1 Polyclonal Antibody	Q13635	H M	ELISA WB IHC
EAP4254	RAB23 Polyclonal Antibody	Q9ULC3	H M R	WB
EAP3268	SMO Polyclonal Antibody	Q99835	H	WB
ESAP13173	SMO Polyclonal Antibody	Q99835	H R	ELISA IHC
EAP3286	ADAM17 Polyclonal Antibody	P78536	H R	WB
ESAP10895	ADAM17 Polyclonal Antibody	P78536	H M R	ELISA IHC
ENT1424	Dvl-2 Polyclonal Antibody	O14641	H M	WB IHC ELISA
EAP2369	DTX2 Polyclonal Antibody	Q86UW9	H M R	WB IHC
ESAP10414	DTX3 Polyclonal Antibody	Q8N9I9	H M	ELISA WB IHC





**Elabscience®**

---

Email: [techsupport@elabscience.com](mailto:techsupport@elabscience.com)

Website: [www.elabscience.com](http://www.elabscience.com)