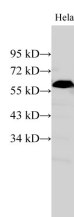


PKM Polyclonal Antibody

Catalog No.	E-AB-40250	Reactivity	H
Storage	Store at -20°C. Avoid freeze / thaw cycles.	Host	Rabbit
Applications	WB	Isotype	IgG

Note: Centrifuge before opening to ensure complete recovery of vial contents.

Images



Western Blot analysis of HeLa cell using PKM Polyclonal Antibody at dilution of 1:500

Immunogen Information

Immunogen	Recombinant Human Pyruvate kinase PKM protein
Swissprot	P14618
Synonyms	CTHBP,Pyruvate kinase muscle isozyme,pyruvate kinase PKM,TCB,THBP1,Tumor M2 PK,Tumor M2-PK

Product Information

Calculated MW	56,58 kDa
Observed MW	58 kDa
Buffer	PBS with 0.05% Proclin300 and 50% glycerol, pH7.4.
Purify	Affinity Purification
Dilution	WB 1:500-1:1000

Background

PKM2,also named as OIP3,PK2,PK3,PKM,p58,THBP1,CTHBP and Tumor M2-PK,belongs to the pyruvate kinase family. It is glycolytic enzyme that catalyzes the transfer of a phosphoryl group from phosphoenolpyruvate (PEP) to ADP,generating ATP. It stimulates POU5F1-mediated transcriptional activation. PKM2 plays a general role in caspase independent cell death of tumor cells. The activity of the M2 isoform (but not the M1 isoform) can be inhibited by tyrosine kinase signalling in tumourcells.The primary pyruvate kinase isoform before tumour development is PK-M1; however,the primary isoform from four independent tumours is PK-M2. PKM2,Pyruvate kinase isozymes M1/M2,has 2 isoforms .The immunogen of this antibody is M2 isoform,also called PKM2.

For Research Use Only

Thank you for your recent purchase.
 If you would like to learn more about antibodies,please visit www.elabscience.com.

**Focus on your research
 Service for life science**

Applications:WB-Western Blot IHC-Immunohistochemistry IF-Immunofluorescence IP-Immunoprecipitation FC-Flow cytometry ChIP-Chromatin Immunoprecipitation Reactivity: H-Human R-Rat M-Mouse Mk-Monkey Dg-Dog Ch-Chicken Hm-Hamster Rb-Rabbit Sh-Sheep Pg-Pig Z-Zebrafish X-Xenopus C-Cow.