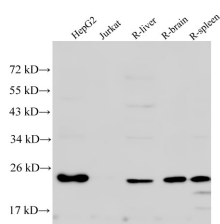


## RAN Polyclonal Antibody

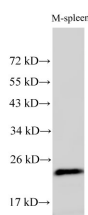
<b>Catalog No.</b>	E-AB-40251	<b>Reactivity</b>	H,M,R
<b>Storage</b>	Store at -20°C. Avoid freeze / thaw cycles.	<b>Host</b>	Rabbit
<b>Applications</b>	WB	<b>Isotype</b>	IgG

**Note:** Centrifuge before opening to ensure complete recovery of vial contents.

### Images



Western Blot analysis of HepG2, Jurkat cells, Rat liver, Rat brain and Rat spleen using RAN Polyclonal Antibody at dilution of 1:500



Western Blot analysis of Mouse spleen using RAN Polyclonal Antibody at dilution of 1:500

### Immunogen Information

<b>Immunogen</b>	Recombinant Human GTP-binding nuclear protein Ran protein
<b>Swissprot</b>	P62826
<b>Synonyms</b>	Androgen receptor associated protein 24,RAN,RanGTPase,Ras-related nuclear protein,RASL2 8,TC4

### Product Information

<b>Calculated MW</b>	24 kDa
<b>Observed MW</b>	24 kDa
<b>Buffer</b>	PBS with 0.05% Proclin300 and 50% glycerol, pH7.4.
<b>Purify</b>	Affinity Purification
<b>Dilution</b>	WB 1:500-1:1000

### Background

RAN (ras-related nuclear protein) is a small GTP binding protein belonging to the RAS superfamily that is essential for the translocation of RNA and proteins through the nuclear pore complex. The RAN protein is also involved in control of DNA synthesis and cell cycle progression. Nuclear localization of RAN requires the presence of regulator of chromosome condensation 1 (RCC1). Mutations in RAN disrupt DNA synthesis.

#### For Research Use Only

Thank you for your recent purchase.  
 If you would like to learn more about antibodies, please visit [www.elabscience.com](http://www.elabscience.com).

**Focus on your research  
 Service for life science**

Applications:WB-Western Blot IHC-Immunohistochemistry IF-Immunofluorescence IP-Immunoprecipitation FC-Flow cytometry ChIP-Chromatin Immunoprecipitation Reactivity: H-Human R-Rat M-Mouse Mk-Monkey Dg-Dog Ch-Chicken Hm-Hamster Rb-Rabbit Sh-Sheep Pg-Pig Z-Zebrafish X-Xenopus C-Cow.