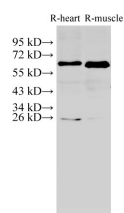


AMPK alpha2 Polyclonal Antibody

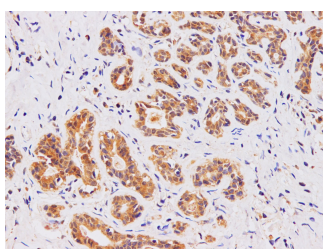
Catalog No.	E-AB-40256	Reactivity	H,R
Storage	Store at -20°C. Avoid freeze / thaw cycles.	Host	Rabbit
Applications	WB,IHC,IF	Isotype	IgG

Note: Centrifuge before opening to ensure complete recovery of vial contents.

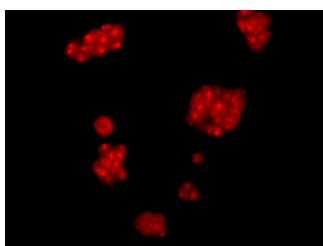
Images



Western Blot analysis of Rat heart and Rat muscle using AMPK alpha2 Polyclonal Antibody at dilution of 1:1000



Immunohistochemistry of paraffin-embedded Human breast using AMPK alpha2 Polyclonal Antibody at dilution of 1:100



Immunofluorescence analysis of McF7 cells using AMPK alpha2 Polyclonal Antibody at dilution of 1:100

Immunogen Information

Immunogen	Recombinant Rat 5'-AMP-activated protein kinase catalytic subunit alpha-2 protein
GeneID	78975
Swissprot	Q09137
Synonyms	AAPK2,ACACA kinase,AMPK alpha 2 chain,AMPK2,AMPKa2,AMPKalpha2

Product Information

Calculated MW	62,4 kDa
Observed MW	62 kDa
Buffer	PBS with 0.05% Proclin300 and 50% glycerol, pH7.4.
Purify	Antigen Affinity Purification
Dilution	WB 1:500-1:2000 IHC 1:100-1:200 IF 1:100-1:400

Background

The protein encoded by this gene is a catalytic subunit of the AMP-activated protein kinase (AMPK). AMPK is a heterotrimer consisting of an alpha catalytic subunit, and non-catalytic beta and gamma subunits. AMPK is an important energy-sensing enzyme that monitors cellular energy status. In response to cellular metabolic stresses, AMPK is activated, and thus phosphorylates and inactivates acetyl-CoA carboxylase (ACC) and beta-hydroxy beta-methylglutaryl-CoA reductase (HMGCR), key enzymes involved in regulating de novo biosynthesis of fatty acid and cholesterol. Studies of the mouse counterpart suggest that this catalytic subunit may control whole-body insulin sensitivity and is necessary for maintaining myocardial energy homeostasis during ischemia.

For Research Use Only

Thank you for your recent purchase.
 If you would like to learn more about antibodies, please visit www.elabscience.com.

**Focus on your research
 Service for life science**

Applications:WB-Western Blot IHC-Immunohistochemistry IF-Immunofluorescence IP-Immunoprecipitation FC-Flow cytometry ChIP-Chromatin Immunoprecipitation Reactivity: H-Human R-Rat M-Mouse Mk-Monkey Dg-Dog Ch-Chicken Hm-Hamster Rb-Rabbit Sh-Sheep Pg-Pig Z-Zebrafish X-Xenopus C-Cow.