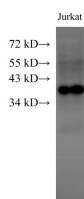


HMG20B Polyclonal Antibody

Catalog No.	E-AB-40258	Reactivity	H
Storage	Store at -20°C. Avoid freeze / thaw cycles.	Host	Rabbit
Applications	WB	Isotype	IgG

Note: Centrifuge before opening to ensure complete recovery of vial contents.

Images



Western Blot analysis of Jurkat cells using HMG20B Polyclonal Antibody at dilution of 1:1000

Immunogen Information

Immunogen	Recombinant Human SWI/SNF-related matrix-associated actin-dependent regulator of chromatin subfamily E member 1-related protein
Swissprot	Q9P0W2
Synonyms	BRAF25,BRAF35,SOXL,Structural DNA binding protein BRAF35

Product Information

Calculated MW	36,33,25 kDa
Observed MW	38 kDa
Buffer	PBS with 0.05% Proclin300 and 50% glycerol, pH7.4.
Purify	Antigen Affinity Purification
Dilution	WB 1:1000-1:2000

Background

HMG20B (High Mobility Group 20B) is a Protein Coding gene. Among its related pathways are Response to elevated platelet cytosolic Ca²⁺ and Activated PKN1 stimulates transcription of AR (androgen receptor) regulated genes KLK2 and KLK3. Gene Ontology (GO) annotations related to this gene include protein heterodimerization activity and chromatin binding. An important paralog of this gene is HMG20A.

For Research Use Only

Thank you for your recent purchase.
 If you would like to learn more about antibodies, please visit www.elabscience.com.

**Focus on your research
 Service for life science**

Applications:WB-Western Blot IHC-Immunohistochemistry IF-Immunofluorescence IP-Immunoprecipitation FC-Flow cytometry ChIP-Chromatin Immunoprecipitation Reactivity: H-Human R-Rat M-Mouse Mk-Monkey Dg-Dog Ch-Chicken Hm-Hamster Rb-Rabbit Sh-Sheep Pg-Pig Z-Zebrafish X-Xenopus C-Cow.