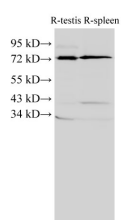


ANXA6 Polyclonal Antibody

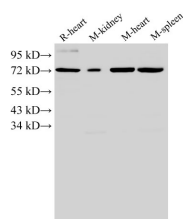
Catalog No.	E-AB-40260	Reactivity	H,M,R
Storage	Store at -20°C. Avoid freeze / thaw cycles.	Host	Rabbit
Applications	WB,IHC	Isotype	IgG

Note: Centrifuge before opening to ensure complete recovery of vial contents.

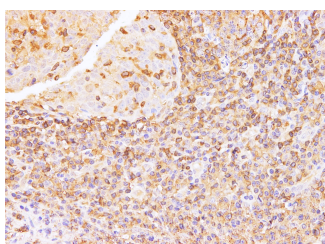
Images



Western Blot analysis of Rat testis and Rat spleen using ANXA6 Polyclonal Antibody at dilution of 1:2000



Western Blot analysis of Rat heart, Mouse kidney, Mouse heart and Mouse spleen using ANXA6 Polyclonal Antibody at dilution of 1:2000



Immunohistochemistry of paraffin-embedded Human tonsil using Anxa6 Polyclonal Antibody at dilution of 1:100

Immunogen Information

Immunogen	Recombinant Rat Annexin A6 protein
Swissprot	P48037
Synonyms	Annexin VI, Annexin VI p68, Annexin-6, AnnexinA6, AnnexinVI, ANX 6, ANX A6, ANX6, ANXA 6, ANXA6, ANXA6CBP 68, CBP68, Chromobindin 20

Product Information

Calculated MW	76 kDa
Observed MW	72 kDa
Buffer	PBS with 0.05% Proclin300 and 50% glycerol, pH7.4.
Purify	Affinity Purification
Dilution	WB 1:1000-1:4000 IHC1:100-1:200

Background

Annexin VI belongs to a family of calcium-dependent membrane and phospholipid binding proteins. Several members of the annexin family have been implicated in membrane-related events along exocytotic and endocytotic pathways. The annexin VI gene is approximately 60 kbp long and contains 26 exons. It encodes a protein of about 68 kDa that consists of eight 68-amino acid repeats separated by linking sequences of variable lengths. It is highly similar to human annexins I and II sequences, each of which contain four such repeats. Annexin VI has been implicated in mediating the endosome aggregation and vesicle fusion in secreting epithelia during exocytosis. Alternatively spliced transcript variants have been described.

For Research Use Only

Thank you for your recent purchase.
 If you would like to learn more about antibodies, please visit www.elabscience.com.

Focus on your research
Service for life science

Applications: WB-Western Blot IHC-Immunohistochemistry IF-Immunofluorescence IP-Immunoprecipitation FC-Flow cytometry ChIP-Chromatin Immunoprecipitation Reactivity: H-Human R-Rat M-Mouse Mk-Monkey Dg-Dog Ch-Chicken Hm-Hamster Rb-Rabbit Sh-Sheep Pg-Pig Z-Zebrafish X-Xenopus C-Cow.