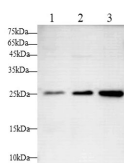


## HP1α Polyclonal Antibody

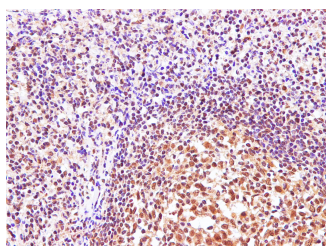
<b>Catalog No.</b>	E-AB-40261	<b>Reactivity</b>	H,R
<b>Storage</b>	Store at -20°C. Avoid freeze / thaw cycles.	<b>Host</b>	Rabbit
<b>Applications</b>	WB,IHC	<b>Isotype</b>	IgG

**Note:** Centrifuge before opening to ensure complete recovery of vial contents.

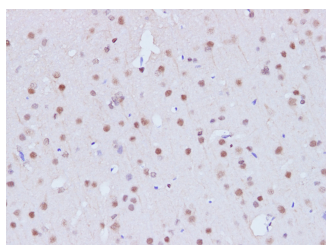
### Images



Western blot with Cbx5 Polyclonal antibody at dilution of 1:1000.lane 1:HeLa whole cell lysate, lane 2:SH-SY5Y whole cell lysate,lane 3:MCF-7 whole cell lysate



Immunohistochemistry of paraffin-embedded Human tonsil using CBX5 Polyclonal Antibody at dilution of 1:100



Immunohistochemistry of paraffin-embedded Rat brain using CBX5 Polyclonal Antibody at dilution of 1:100

### Immunogen Information

<b>Immunogen</b>	Recombinant Human Chromobox protein homolog 5 protein
<b>Swissprot</b>	P45973
<b>Synonyms</b>	Antigen p25,CBX5,CBX5,CG8409,Chromobox 5,Chromobox homolog 5,HP1,HP1A,HP1Hs alpha,Su(var)205

### Product Information

<b>Calculated MW</b>	22kDa
<b>Observed MW</b>	25kDa
<b>Buffer</b>	PBS with 0.05% Proclin300 and 50% glycerol, pH7.4.
<b>Purify</b>	Affinity Purification
<b>Dilution</b>	WB:1:500-1000 IHC 1:100-1:300

### Background

This gene encodes a highly conserved nonhistone protein, which is a member of the heterochromatin protein family. The protein is enriched in the heterochromatin and associated with centromeres. The protein has a single N-terminal chromodomain which can bind to histone proteins via methylated lysine residues, and a C-terminal chromo shadow-domain (CSD) which is responsible for the homodimerization and interaction with a number of chromatin-associated nonhistone proteins. The encoded product is involved in the formation of functional kinetochore through interaction with essential kinetochore proteins. The gene has a pseudogene located on chromosome 3. Multiple alternatively spliced variants, encoding the same protein, have been identified.

#### For Research Use Only

Thank you for your recent purchase.  
 If you would like to learn more about antibodies, please visit [www.elabscience.com](http://www.elabscience.com).

**Focus on your research  
 Service for life science**

Applications:WB-Western Blot IHC-Immunohistochemistry IF-Immunofluorescence IP-Immunoprecipitation FC-Flow cytometry ChIP-Chromatin Immunoprecipitation Reactivity: H-Human R-Rat M-Mouse Mk-Monkey Dg-Dog Ch-Chicken Hm-Hamster Rb-Rabbit Sh-Sheep Pg-Pig Z-Zebrafish X-Xenopus C-Cow.