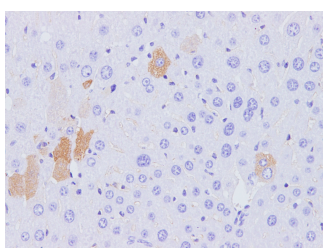


p16 Polyclonal Antibody

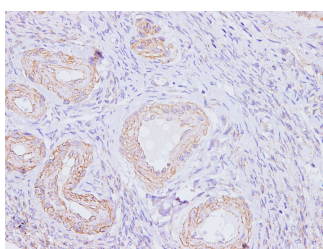
Catalog No.	E-AB-40264	Reactivity	H,R
Storage	Store at -20°C. Avoid freeze / thaw cycles.	Host	Rabbit
Applications	IHC,IF	Isotype	IgG

Note: Centrifuge before opening to ensure complete recovery of vial contents.

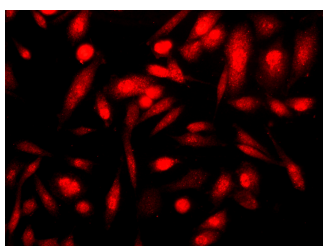
Images



Immunohistochemistry of paraffinembedded Rat liver using p16 Polyclonal Antibody at dilution of 1:100



Immunohistochemistry of paraffinembedded Human ovarian using p16 Polyclonal Antibody at dilution of 1:100



Immunofluorescence analysis of PC-3 cells using p16 Polyclonal Antibody at dilution of 1:100

Immunogen Information

Immunogen	Recombinant Rat Cyclin-dependent kinase inhibitor 2A protein
GeneID	25163
Swissprot	Q9R0Z3
Synonyms	CCM2,CDK4 inhibitor p16 INK4,CDK4I,CDKN2,CDKN2A,Cell cycle negative regulator beta,CMM2

Product Information

Buffer	PBS with 0.05% Proclin300 and 50% glycerol, pH7.4.
Purify	Antigen Affinity Purification
Dilution	IHC 1:50-1:200 IF 1:100-1:200

Background

This gene generates several transcript variants which differ in their first exons. At least three alternatively spliced variants encoding distinct proteins have been reported, two of which encode structurally related isoforms known to function as inhibitors of CDK4 kinase. The remaining transcript includes an alternate first exon located 20 Kb upstream of the remainder of the gene; this transcript contains an alternate open reading frame (ARF) that specifies a protein which is structurally unrelated to the products of the other variants. This ARF product functions as a stabilizer of the tumor suppressor protein p53 as it can interact with, and sequester, the E3 ubiquitin-protein ligase MDM2, a protein responsible for the degradation of p53.

For Research Use Only

Thank you for your recent purchase.
 If you would like to learn more about antibodies, please visit www.elabscience.com.

**Focus on your research
 Service for life science**

Applications:WB-Western Blot IHC-Immunohistochemistry IF-Immunofluorescence IP-Immunoprecipitation FC-Flow cytometry ChIP-Chromatin Immunoprecipitation Reactivity: H-Human R-Rat M-Mouse Mk-Monkey Dg-Dog Ch-Chicken Hm-Hamster Rb-Rabbit Sh-Sheep Pg-Pig Z-Zebrafish X-Xenopus C-Cow.