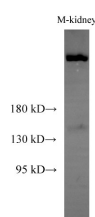


SPTAN1 Polyclonal Antibody

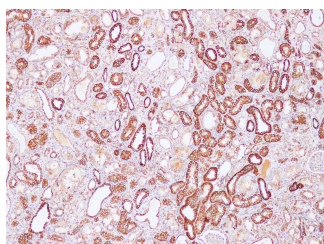
Catalog No.	E-AB-40268	Reactivity	H,M,R
Storage	Store at -20°C. Avoid freeze / thaw cycles.	Host	Rabbit
Applications	WB,IHC	Isotype	IgG

Note: Centrifuge before opening to ensure complete recovery of vial contents.

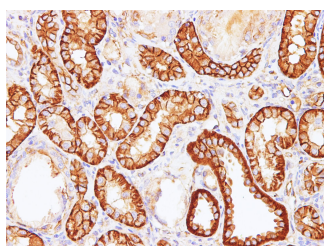
Images



Western Blot analysis of Mouse kidney using Sptan1 Polyclonal Antibody at dilution of 1:1000



Immunohistochemistry of paraffin-embedded Rat kidney using Sptan1 Polyclonal Antibody at dilution of 1:100(100x)



Immunohistochemistry of paraffin-embedded Rat kidney using Sptan1 Polyclonal Antibody at dilution of 1:100(400x)

Immunogen Information

Immunogen	Recombinant Rat Spectrin alpha chain, non-erythrocytic 1 protein
Swissprot	P16086
Synonyms	Alpha II Spectrin,brain,SPTA2,SPTA2,SPTAN1,SPTAN1

Product Information

Calculated MW	285,282 kDa
Observed MW	280 kDa
Buffer	PBS with 0.05% Proclin300 and 50% glycerol, pH7.4.
Purify	Antigen Affinity Purification
Dilution	WB 1:1000-1:2000 IHC 1:100-1:400

Background

Spectrins are a family of filamentous cytoskeletal proteins that function as essential scaffold proteins that stabilize the plasma membrane and organize intracellular organelles. Spectrins are composed of alpha and beta dimers that associate to form tetramers linked in a head-to-head arrangement. This gene encodes an alpha spectrin that is specifically expressed in nonerythrocytic cells. The encoded protein has been implicated in other cellular functions including DNA repair and cell cycle regulation.

For Research Use Only

Thank you for your recent purchase.
 If you would like to learn more about antibodies, please visit www.elabscience.com.

**Focus on your research
 Service for life science**

Applications:WB-Western Blot IHC-Immunohistochemistry IF-Immunofluorescence IP-Immunoprecipitation FC-Flow cytometry ChIP-Chromatin Immunoprecipitation Reactivity: H-Human R-Rat M-Mouse Mk-Monkey Dg-Dog Ch-Chicken Hm-Hamster Rb-Rabbit Sh-Sheep Pg-Pig Z-Zebrafish X-Xenopus C-Cow.