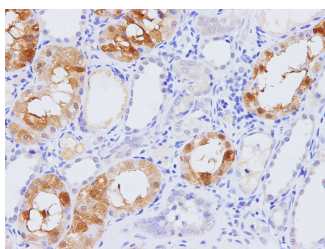


PCK1 Polyclonal Antibody

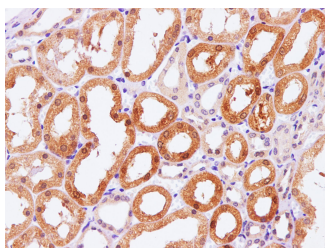
Catalog No.	E-AB-40269	Reactivity	H,R
Storage	Store at -20°C. Avoid freeze / thaw cycles.	Host	Rabbit
Applications	IHC	Isotype	IgG

Note: Centrifuge before opening to ensure complete recovery of vial contents.

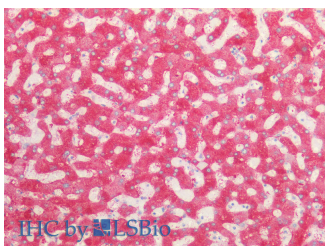
Images



Immunohistochemistry of paraffin-embedded Rat kidney using Pck1 Polyclonal Antibody at dilution of 1:100



Immunohistochemistry of paraffin-embedded Human kidney using Pck1 Polyclonal Antibody at dilution of 1:100



Immunohistochemistry of paraffin-embedded Human liver using PCK1 Polyclonal Antibody at dilution of 1:100(Elabscience® Product Detected by Lifespan).

Immunogen Information

Immunogen	Recombinant Rat Phosphoenolpyruvate carboxykinase, cytosolic [GTP] protein
Swissprot	P07379
Synonyms	GTP,PCK1,PCKGC,PEP carboxykinase,PEPCK-C,PEPCK1,Phosphopyruvate carboxylase

Product Information

Buffer	PBS with 0.05% Proclin300 and 50% glycerol, pH7.4.
Purify	Antigen Affinity Purification
Dilution	IHC 1:100-1:200

Background

This gene is a main control point for the regulation of gluconeogenesis. The cytosolic enzyme encoded by this gene, along with GTP, catalyzes the formation of phosphoenolpyruvate from oxaloacetate, with the release of carbon dioxide and GDP. The expression of this gene can be regulated by insulin, glucocorticoids, glucagon, cAMP, and diet. Defects in this gene are a cause of cytosolic phosphoenolpyruvate carboxykinase deficiency. A mitochondrial isozyme of the encoded protein also has been characterized.

For Research Use Only

Thank you for your recent purchase.
 If you would like to learn more about antibodies, please visit www.elabscience.com.

**Focus on your research
 Service for life science**

Applications:WB-Western Blot IHC-Immunohistochemistry IF-Immunofluorescence IP-Immunoprecipitation FC-Flow cytometry ChIP-Chromatin Immunoprecipitation Reactivity: H-Human R-Rat M-Mouse Mk-Monkey Dg-Dog Ch-Chicken Hm-Hamster Rb-Rabbit Sh-Sheep Pg-Pig Z-Zebrafish X-Xenopus C-Cow.