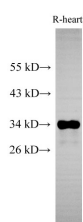


Cytochrome c1 Polyclonal Antibody

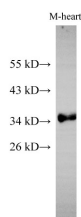
Catalog No.	E-AB-40271	Reactivity	H,M,R
Storage	Store at -20°C. Avoid freeze / thaw cycles.	Host	Rabbit
Applications	WB,IHC	Isotype	IgG

Note: Centrifuge before opening to ensure complete recovery of vial contents.

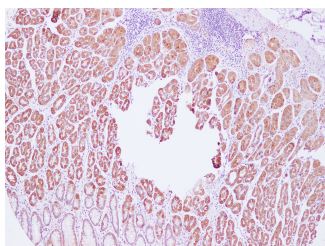
Images



Western Blot analysis of Rat heart using Cytochrome c1 Polyclonal Antibody at dilution of 1:500



Western Blot analysis of Mouse heart using Cytochrome c1 Polyclonal Antibody at dilution of 1:500



Immunohistochemistry of paraffin-embedded Human stomach using Cytochrome c1 Polyclonal Antibody at dilution of 1:100(100×)

Immunogen Information

Immunogen	Recombinant Mouse Cytochrome c1, heme protein, mitochondrial protein
GeneID	66445
Swissprot	Q9D0M3
Synonyms	Complex III subunit 4,Complex III subunit IV,UQCR4

Product Information

Calculated MW	35,29 kDa
Observed MW	34 kDa
Buffer	PBS with 0.05% Proclin300 and 50% glycerol, pH7.4.
Purify	Antigen Affinity Purification
Dilution	WB 1:500-1:1000 IHC 1:100-1:200

Background

This gene encodes a subunit of the cytochrome bc1 complex, which plays an important role in the mitochondrial respiratory chain by transferring electrons from the Rieske iron-sulfur protein to cytochrome c. Mutations in this gene may cause mitochondrial complex III deficiency, nuclear type 6.

For Research Use Only

Thank you for your recent purchase.
 If you would like to learn more about antibodies, please visit www.elabscience.com.

Focus on your research
Service for life science

Applications:WB-Western Blot IHC-Immunohistochemistry IF-Immunofluorescence IP-Immunoprecipitation FC-Flow cytometry ChIP-Chromatin Immunoprecipitation Reactivity: H-Human R-Rat M-Mouse Mk-Monkey Dg-Dog Ch-Chicken Hm-Hamster Rb-Rabbit Sh-Sheep Pg-Pig Z-Zebrafish X-Xenopus C-Cow.