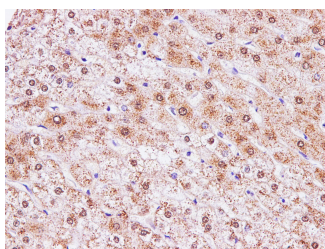


## CCL2 Polyclonal Antibody

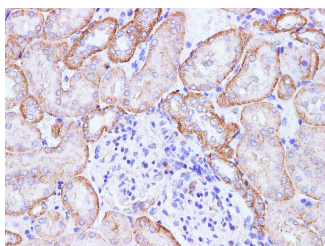
<b>Catalog No.</b>	E-AB-40273	<b>Reactivity</b>	H,M
<b>Storage</b>	Store at -20°C. Avoid freeze / thaw cycles.	<b>Host</b>	Rabbit
<b>Applications</b>	IHC	<b>Isotype</b>	IgG

**Note:** Centrifuge before opening to ensure complete recovery of vial contents.

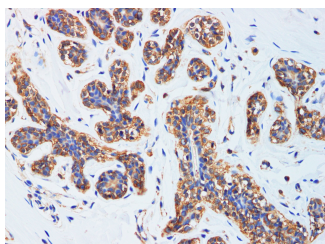
### Images



Immunohistochemistry of paraffin-embedded Human liver using CCL2 Polyclonal Antibody at dilution of 1:100



Immunohistochemistry of paraffin-embedded Mouse kidney using CCL2 Polyclonal Antibody at dilution of 1:100



Immunohistochemistry of paraffin-embedded Human breast using CCL2 Polyclonal Antibody at dilution of 1:200

### Immunogen Information

<b>Immunogen</b>	Recombinant Human C-C motif chemokine 2 protein
<b>Swissprot</b>	P13500
<b>Synonyms</b>	CCL2,CCL2,GDCF 2,GDCF-2,GDCF2,HC11,HSMCR30,JE,MCAF,MCP 1,MCP-1,MCP1,MGC9434,SMC CF,SMC- CF,SMCCF

### Product Information

<b>Buffer</b>	PBS with 0.05% Proclin300 and 50% glycerol, pH7.4.
<b>Purify</b>	Antigen Affinity Purification
<b>Dilution</b>	IHC 1:100-1:300

### Background

This gene is one of several cytokine genes clustered on the q-arm of chromosome 17. Cytokines are a family of secreted proteins involved in immunoregulatory and inflammatory processes. The protein encoded by this gene is structurally related to the CXC subfamily of cytokines. Members of this subfamily are characterized by two cysteines separated by a single amino acid. This cytokine displays chemotactic activity for monocytes and basophils but not for neutrophils or eosinophils. It has been implicated in the pathogenesis of diseases characterized by monocytic infiltrates, like psoriasis, rheumatoid arthritis and atherosclerosis. It binds to chemokine receptors CCR2 and CCR4.

#### For Research Use Only

Thank you for your recent purchase.  
 If you would like to learn more about antibodies, please visit [www.elabscience.com](http://www.elabscience.com).

**Focus on your research  
 Service for life science**

Applications:WB-Western Blot IHC-Immunohistochemistry IF-Immunofluorescence IP-Immunoprecipitation FC-Flow cytometry ChIP-Chromatin Immunoprecipitation Reactivity: H-Human R-Rat M-Mouse Mk-Monkey Dg-Dog Ch-Chicken Hm-Hamster Rb-Rabbit Sh-Sheep Pg-Pig Z-Zebrafish X-Xenopus C-Cow.