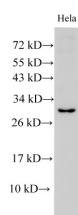


CRP Polyclonal Antibody

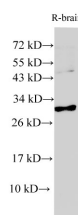
Catalog No.	E-AB-40277	Reactivity	H,M,R
Storage	Store at -20°C. Avoid freeze / thaw cycles.	Host	Rabbit
Applications	WB,IHC	Isotype	IgG

Note: Centrifuge before opening to ensure complete recovery of vial contents.

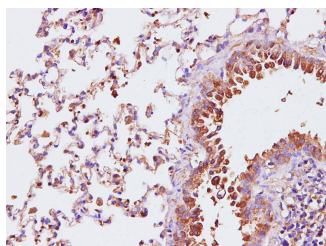
Images



Western Blot analysis of HeLa cells using CRP Polyclonal Antibody at dilution of 1:1000



Western Blot analysis of Rat brain using CRP Polyclonal Antibody at dilution of 1:1000



Immunohistochemistry of paraffin-embedded Rat lung using CRP Polyclonal Antibody at dilution of 1:100

Immunogen Information

Immunogen	Recombinant Rat C-reactive protein
Swissprot	P48199
Synonyms	Pentraxin 1,short,C reactive protein,CRP,CRP,MGC88244,Pentraxin 1,PTX 1,PTX1

Product Information

Calculated MW	25kDa
Observed MW	30kDa
Buffer	PBS with 0.05% Proclin300 and 50% glycerol, pH7.4.
Purify	Affinity Purification
Dilution	WB 1:500-1:2000 IHC 1:100-1:200

Background

C-reactive protein (CRP) is an acute-phase serum protein synthesized by the liver in response to interleukin-6 (IL-6) during inflammation. The name of CRP derives from its ability to react with the C polysaccharide of *Streptococcus pneumoniae*. CRP is an annular, pentameric protein that belongs to the pentraxin family of proteins. CRP displays several functions associated with host defense: it promotes agglutination, bacterial capsular swelling, phagocytosis and complement fixation through its calcium-dependent binding to phosphorylcholine. It is used mainly as a marker of inflammation.

For Research Use Only

Thank you for your recent purchase.
 If you would like to learn more about antibodies, please visit www.elabscience.com.

Focus on your research
Service for life science

Applications:WB-Western Blot IHC-Immunohistochemistry IF-Immunofluorescence IP-Immunoprecipitation FC-Flow cytometry ChIP-Chromatin Immunoprecipitation Reactivity: H-Human R-Rat M-Mouse Mk-Monkey Dg-Dog Ch-Chicken Hm-Hamster Rb-Rabbit Sh-Sheep Pg-Pig Z-Zebrafish X-Xenopus C-Cow.