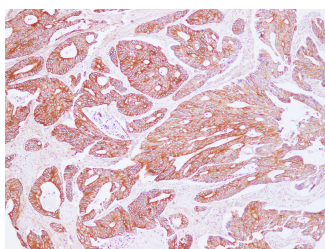


POSTN Polyclonal Antibody

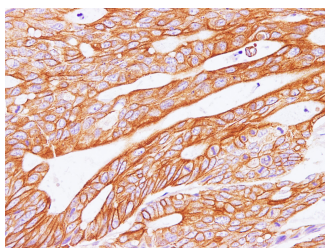
| | | | |
|---------------------|---------------------------------------------|-------------------|--------|
| Catalog No. | E-AB-40278 | Reactivity | H |
| Storage | Store at -20°C. Avoid freeze / thaw cycles. | Host | Rabbit |
| Applications | IHC,IF | Isotype | IgG |

Note: Centrifuge before opening to ensure complete recovery of vial contents.

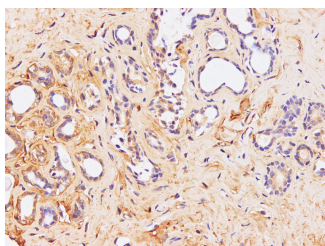
Images



Immunohistochemistry of paraffin-embedded Human carcinoma of Colon using POSTN Polyclonal Antibody at dilution of 1:100(100×)



Immunohistochemistry of paraffin-embedded Human carcinoma of Colon using POSTN Polyclonal Antibody at dilution of 1:100(400×)



Immunohistochemistry of paraffin-embedded Human breast using POSTN Polyclonal Antibody at dilution of 1:100

Immunogen Information

| | |
|------------------|-----------------------------------------------------------------------------------------------|
| Immunogen | Recombinant Human Periostin protein |
| GeneID | 10631 |
| Swissprot | Q15063 |
| Synonyms | Fasciclin-I like,OSF 2,OSF-2,OSF2,PDLPOSTN,Periostin isoform thy8,POSTN,POSTN,RP11 412K4.1 |

Product Information

| | |
|-----------------|----------------------------------------------------|
| Buffer | PBS with 0.05% Proclin300 and 50% glycerol, pH7.4. |
| Purify | Antigen Affinity Purification |
| Dilution | IHC 1:100-1:200 IF 1:100-1:200 |

Background

Periostin (POSTN,PN),originally named as osteoblast-specific factor 2 (OSF-2),is a 90-kDa secreted protein which is now classified as a matricellular protein. It is present in a wide variety of normal adult tissues and fetal tissues,and has a role in bone,tooth and heart development and function. Studies show that periostin is overexpressed in a broad range of human cancer types,including lung,ovary,breast and colon cancers. Recent evidence reveals that periostin is expressed by fibroblasts in the normal tissue and in the stroma of the primary tumour,and it is required to allow cancer stem cell maintenance.

For Research Use Only

Thank you for your recent purchase.
 If you would like to learn more about antibodies,please visit www.elabscience.com.

**Focus on your research
 Service for life science**

Applications:WB-Western Blot IHC-Immunohistochemistry IF-Immunofluorescence IP-Immunoprecipitation FC-Flow cytometry ChIP-Chromatin Immunoprecipitation Reactivity: H-Human R-Rat M-Mouse Mk-Monkey Dg-Dog Ch-Chicken Hm-Hamster Rb-Rabbit Sh-Sheep Pg-Pig Z-Zebrafish X-Xenopus C-Cow.