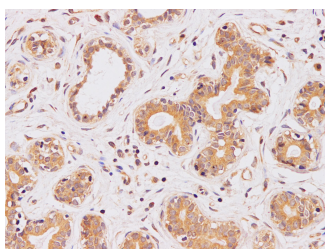


PI 3 kinase p110 alpha Polyclonal Antibody

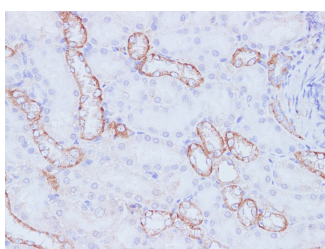
Catalog No.	E-AB-40287	Reactivity	H,R
Storage	Store at -20°C. Avoid freeze / thaw cycles.	Host	Rabbit
Applications	IHC	Isotype	IgG

Note: Centrifuge before opening to ensure complete recovery of vial contents.

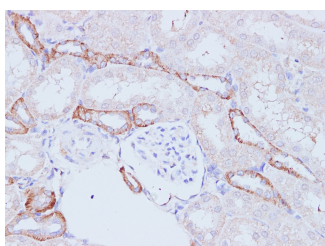
Images



Immunohistochemistry of paraffin-embedded Human breast using PI 3 kinase p110 alpha Polyclonal Antibody at dilution of 1:100



Immunohistochemistry of paraffin-embedded Rat kidney using PI 3 kinase p110 alpha Polyclonal Antibody at dilution of 1:100



Immunohistochemistry of paraffin-embedded Rat kidney using PI 3 kinase p110 alpha Polyclonal Antibody at dilution of 1:100

Immunogen Information

Immunogen	Recombinant Human Phosphatidylinositol 4,5-bisphosphate 3-kinase catalytic subunit alpha isoform protein
GeneID	5290
Swissprot	P42336
Synonyms	caPI3K,CLOVE,CWS5,MCAP,MCM,MCMTC,PI3K,PI3K-alpha,PI3KC A,PIK3C A,Pik3ca,PK3CA,PK3CA

Product Information

Buffer	PBS with 0.05% Proclin300 and 50% glycerol, pH7.4.
Purify	Affinity Purification
Dilution	IHC 1:100-1:200

Background

Phosphatidylinositol 3-kinase is composed of an 85 kDa regulatory subunit and a 110 kDa catalytic subunit. The protein encoded by this gene represents the catalytic subunit, which uses ATP to phosphorylate PtdIns, PtdIns4P and PtdIns(4,5)P2. This gene has been found to be oncogenic and has been implicated in cervical cancers. A pseudogene of this gene has been defined on chromosome 22.

For Research Use Only

Thank you for your recent purchase.
 If you would like to learn more about antibodies, please visit www.elabscience.com.

**Focus on your research
 Service for life science**

Applications:WB-Western Blot IHC-Immunohistochemistry IF-Immunofluorescence IP-Immunoprecipitation FC-Flow cytometry ChIP-Chromatin Immunoprecipitation Reactivity: H-Human R-Rat M-Mouse Mk-Monkey Dg-Dog Ch-Chicken Hm-Hamster Rb-Rabbit Sh-Sheep Pg-Pig Z-Zebrafish X-Xenopus C-Cow.