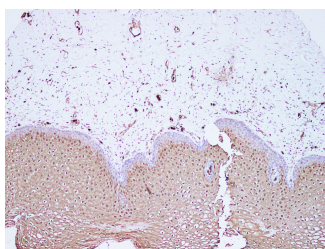


S100A8 Polyclonal Antibody

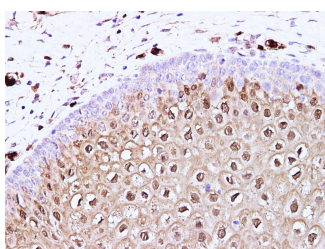
Catalog No.	E-AB-40290	Reactivity	H
Storage	Store at -20°C. Avoid freeze / thaw cycles.	Host	Rabbit
Applications	IHC	Isotype	IgG

Note: Centrifuge before opening to ensure complete recovery of vial contents.

Images



Immunohistochemistry of paraffin-embedded Human cervix using S100A8 Polyclonal Antibody at dilution of 1:100(100x)



Immunohistochemistry of paraffin-embedded Human cervix using S100A8 Polyclonal Antibody at dilution of 1:100(400x)

Immunogen Information

Immunogen	Recombinant Human Protein S100-A8 protein
GeneID	6279
Swissprot	P05109
Synonyms	AI323541,B8Ag,BEE11,CAGA,Calgranulin-A,CFAG,CGLA,Chemotactic cytokine CP-10,CP-10,MIF,Protein S100-A8,S100A8,S100A8/S100A9 complex,included,S10A8

Product Information

Buffer	PBS with 0.05% Proclin300 and 50% glycerol, pH7.4.
Purify	Affinity Purification
Dilution	IHC 1:100-1:200

Background

The protein encoded by this gene is a member of the S100 family of proteins containing 2 EF-hand calcium-binding motifs. S100 proteins are localized in the cytoplasm and/or nucleus of a wide range of cells, and involved in the regulation of a number of cellular processes such as cell cycle progression and differentiation. S100 genes include at least 13 members which are located as a cluster on chromosome 1q21. This protein may function in the inhibition of casein kinase and as a cytokine. Altered expression of this protein is associated with the disease cystic fibrosis. Multiple transcript variants encoding different isoforms have been found for this gene.

For Research Use Only

Thank you for your recent purchase.
 If you would like to learn more about antibodies, please visit www.elabscience.com.

**Focus on your research
 Service for life science**

Applications:WB-Western Blot IHC-Immunohistochemistry IF-Immunofluorescence IP-Immunoprecipitation FC-Flow cytometry ChIP-Chromatin Immunoprecipitation Reactivity: H-Human R-Rat M-Mouse Mk-Monkey Dg-Dog Ch-Chicken Hm-Hamster Rb-Rabbit Sh-Sheep Pg-Pig Z-Zebrafish X-Xenopus C-Cow.