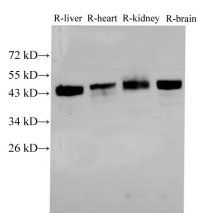


BSG Polyclonal Antibody

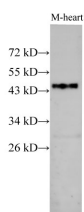
Catalog No.	E-AB-40298	Reactivity	M,R
Storage	Store at -20°C. Avoid freeze / thaw cycles.	Host	Rabbit
Applications	WB,IHC	Isotype	IgG

Note: Centrifuge before opening to ensure complete recovery of vial contents.

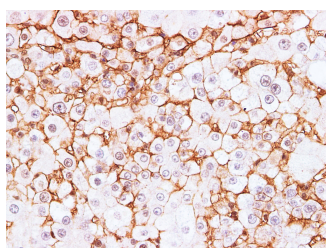
Images



Western Blot analysis of Rat liver, Rat heart, Rat kidney and Rat brain using BSG Polyclonal Antibody at dilution of 1:2000



Western Blot analysis of Mouse heart using BSG Polyclonal Antibody at dilution of 1:1000



Immunohistochemistry of paraffin-embedded Rat liver using BSG Polyclonal Antibody at dilution of 1:200

Immunogen Information

Immunogen	Recombinant Rat Basigin protein
GeneID	25246
Swissprot	P26453
Synonyms	Basigin, Bsg, CD 147, CD147, M 6, M6, OK, OK blood group, TCSF

Product Information

Calculated MW	30kDa, 40-60kDa
Observed MW	30kDa, 40-60kDa
Buffer	PBS with 0.05% Proclin300 and 50% glycerol, pH7.4.
Purify	Antigen Affinity Purification
Dilution	WB 1:1000-1:2000 IHC 1:100-1:300

Background

BSG, also named as 5F7, Basigin, EMMPRIN, TCSF and CD147, plays pivotal roles in spermatogenesis, embryo implantation, neural network formation and tumor progression. It stimulates adjacent fibroblasts to produce matrix metalloproteinases (MMPs). CD147 may target monocarboxylate transporters SLC16A1, SLC16A3 and SLC16A8 to plasma membranes of retinal pigment epithelium and neural retina. It seems to be a receptor for oligomannosidic glycans. CD147 is a receptor of CypA, inducing matrix metalloproteinase expression and mediating the degradation of the extracellular matrix, plays an important role in tumorigenesis and invasion in oral cancer. It has been considered as an objective and effective marker to predict invasion and prognosis in various cancers.

For Research Use Only

Thank you for your recent purchase.
 If you would like to learn more about antibodies, please visit www.elabscience.com.

Focus on your research
Service for life science

Applications: WB-Western Blot IHC-Immunohistochemistry IF-Immunofluorescence IP-Immunoprecipitation FC-Flow cytometry ChIP-Chromatin Immunoprecipitation Reactivity: H-Human R-Rat M-Mouse Mk-Monkey Dg-Dog Ch-Chicken Hm-Hamster Rb-Rabbit Sh-Sheep Pg-Pig Z-Zebrafish X-Xenopus C-Cow.