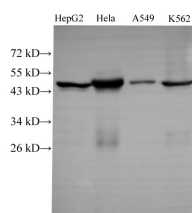


## CK-18 Polyclonal Antibody

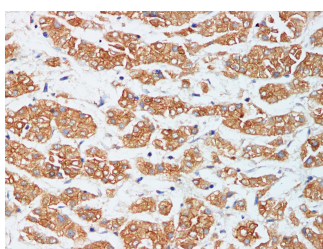
<b>Catalog No.</b>	E-AB-40299	<b>Reactivity</b>	H,M
<b>Storage</b>	Store at -20°C. Avoid freeze / thaw cycles.	<b>Host</b>	Rabbit
<b>Applications</b>	WB,IHC	<b>Isotype</b>	IgG

**Note:** Centrifuge before opening to ensure complete recovery of vial contents.

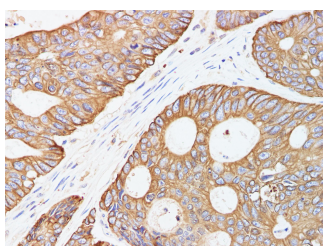
### Images



Western Blot analysis of HepG2, Hela, A549 and k562 using CK-18 Polyclonal Antibody at dilution of 1:1000



Immunohistochemistry of paraffin-embedded Human liver cancer using CK-18 Polyclonal Antibody at dilution of 1:200



Immunohistochemistry of paraffin-embedded Human colorectal cancer using CK-18 Polyclonal Antibody at dilution of 1:200

### Immunogen Information

<b>Immunogen</b>	Recombinant Mouse Krt18 protein
<b>GeneID</b>	16668
<b>Swissprot</b>	P05784
<b>Synonyms</b>	CK 18,CK-18,CK18,CYK 18,CYK18,Cytokeratin 18,K 18,K18,K1C18,KA18,Keratin 18,Keratin 18,type I,Keratin-18,Krt18

### Product Information

<b>Calculated MW</b>	48kDa
<b>Observed MW</b>	48kDa
<b>Buffer</b>	PBS with 0.05% Proclin300 and 50% glycerol, pH7.4.
<b>Purify</b>	Antigen Affinity Purification
<b>Dilution</b>	WB 1:1000-1:2000 IHC 1:100-1:300

### Background

Cytokeratin 18 (CK18) has a molecular weight of 45 KDa, which is a low molecular weight type A cytokeratin. It is a marker of simple epithelium, including glandular epithelium. The stratified squamous epithelium is generally negative. CK18 is mainly used in the diagnosis of adenocarcinoma.

#### For Research Use Only

Thank you for your recent purchase.  
 If you would like to learn more about antibodies, please visit [www.elabscience.com](http://www.elabscience.com).

**Focus on your research  
 Service for life science**

Applications:WB-Western Blot IHC-Immunohistochemistry IF-Immunofluorescence IP-Immunoprecipitation FC-Flow cytometry ChIP-Chromatin Immunoprecipitation Reactivity: H-Human R-Rat M-Mouse Mk-Monkey Dg-Dog Ch-Chicken Hm-Hamster Rb-Rabbit Sh-Sheep Pg-Pig Z-Zebrafish X-Xenopus C-Cow.