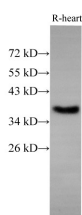


EpCAM Polyclonal Antibody

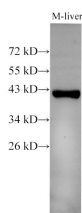
Catalog No.	E-AB-40300	Reactivity	H,M,R
Storage	Store at -20°C. Avoid freeze / thaw cycles.	Host	Rabbit
Applications	WB,IHC	Isotype	IgG

Note: Centrifuge before opening to ensure complete recovery of vial contents.

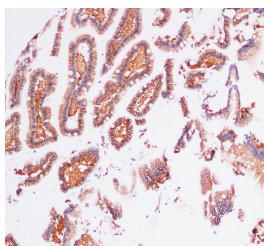
Images



Western Blot analysis of Rat Heart using EpCAM Polyclonal Antibody at dilution of 1:500



Western Blot analysis of Mouse liver using EpCAM Polyclonal Antibody at dilution of 1:500



Immunohistochemistry of paraffin-embedded Human Duodenum using EpCAM Polyclonal Antibody at dilution of 1:100(100x)

Immunogen Information

Immunogen	Recombinant Mouse Epithelial cell adhesion molecule protein
GeneID	17075
Swissprot	Q99JW5
Synonyms	AUA1,CD326,CD326 antigen,CO 17A,CO17 1A,CO17A,DIAR5,EGP 2,EGP,EGP2,EGP314,EGP40,Ep CAM,Ep-CAM,EPCAM,EPCAM,ESA,GA733 1,GA733 2,GA733-2,M1S 1,M1S2,M4S1

Product Information

Calculated MW	35,40kDa
Observed MW	35,40kDa
Buffer	PBS with 0.05% Proclin300 and 50% glycerol, pH7.4.
Purify	Antigen Affinity Purification
Dilution	WB 1:500-1:1000

Background

Epithelial cell adhesion molecule (EpCAM,CD326) is a type I transmembrane glycoprotein that functions as a homophilic, epithelial-specific intercellular cell-adhesion molecule. In addition to cell adhesion, EpCAM is also involved in cellular signaling, cell migration, proliferation, and differentiation. EpCAM is highly expressed on most carcinomas and therefore of potential use as a diagnostic and prognostic marker for a variety of carcinomas, and has become a therapeutic target.

For Research Use Only

Thank you for your recent purchase.
 If you would like to learn more about antibodies, please visit www.elabscience.com.

**Focus on your research
 Service for life science**

Applications:WB-Western Blot IHC-Immunohistochemistry IF-Immunofluorescence IP-Immunoprecipitation FC-Flow cytometry ChIP-Chromatin Immunoprecipitation Reactivity: H-Human R-Rat M-Mouse Mk-Monkey Dg-Dog Ch-Chicken Hm-Hamster Rb-Rabbit Sh-Sheep Pg-Pig Z-Zebrafish X-Xenopus C-Cow.