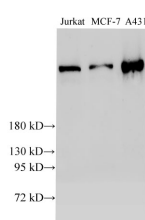


## BRCA2 Polyclonal Antibody

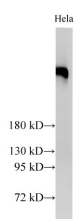
<b>Catalog No.</b>	E-AB-40288	<b>Reactivity</b>	H,R
<b>Storage</b>	Store at -20°C. Avoid freeze / thaw cycles.	<b>Host</b>	Rabbit
<b>Applications</b>	WB,IHC,IF	<b>Isotype</b>	IgG

**Note:** Centrifuge before opening to ensure complete recovery of vial contents.

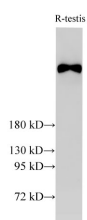
### Images



Western Blot analysis of Jurkat, MCF-7 and A431 cells using BRCA2 Polyclonal Antibody at dilution of 1:2000



Western Blot analysis of HeLa cells using BRCA2 Polyclonal Antibody at dilution of 1:2000



Western Blot analysis of Rat testis using BRCA2 Polyclonal Antibody at dilution of 1:2000

### Immunogen Information

<b>Immunogen</b>	Recombinant Human Breast cancer type 2 susceptibility protein
<b>GeneID</b>	675
<b>Swissprot</b>	P51587
<b>Synonyms</b>	BRCA 2,BRCA2,BRCC 2,BRCC2,BROVCA2,FACD,FAD 1,FAD,FAD1,FANCB,FANCD 1,FANCD,FANCD1,PNCA2,XRCC11

### Product Information

<b>Calculated MW</b>	384 kDa
<b>Observed MW</b>	384 kDa
<b>Buffer</b>	PBS with 0.05% Proclin300 and 50% glycerol, pH7.4.
<b>Purify</b>	Antigen Affinity Purification
<b>Dilution</b>	WB 1:1000-1:3000 IHC 1:100-1:200 IF 1:100-1:400

### Background

Inherited mutations in BRCA1 and this gene, BRCA2, confer increased lifetime risk of developing breast or ovarian cancer. Both BRCA1 and BRCA2 are involved in maintenance of genome stability, specifically the homologous recombination pathway for double-strand DNA repair. The BRCA2 protein contains several copies of a 70 aa motif called the BRC motif, and these motifs mediate binding to the RAD51 recombinase which functions in DNA repair. BRCA2 is considered a tumor suppressor gene, as tumors with BRCA2 mutations generally exhibit loss of heterozygosity (LOH) of the wild-type allele.

#### For Research Use Only

Thank you for your recent purchase.  
 If you would like to learn more about antibodies, please visit [www.elabscience.com](http://www.elabscience.com).

**Focus on your research  
 Service for life science**

Applications:WB-Western Blot IHC-Immunohistochemistry IF-Immunofluorescence IP-Immunoprecipitation FC-Flow cytometry ChIP-Chromatin Immunoprecipitation Reactivity: H-Human R-Rat M-Mouse Mk-Monkey Dg-Dog Ch-Chicken Hm-Hamster Rb-Rabbit Sh-Sheep Pg-Pig Z-Zebrafish X-Xenopus C-Cow.