

Elab Fluor® 488 Anti-Mouse F4/80 Antibody[CI:A3-1]

| | | | |
|--------------------|--|---------------------|-------|
| Catalog No. | E-AB-F0995L | Reactivity | Mouse |
| Storage | Store at 2~8°C, Avoid freeze / thaw cycles | Applications | FCM |

Important Note: Centrifuge before opening to ensure complete recovery of vial contents.

Antigen Information

| | |
|------------------------|--|
| Alternate Names | Adhesion G protein-coupled receptor E1,Adgre1,Cell surface glycoprotein F4/80,EGF-like module receptor 1,Adgre1,Emr1, Gpf480 |
| Uniprot ID | Q61549 |
| Background | F4/80 is a 160 kD glycoprotein. It is characterized as a member of the epidermal growth factor (EGF)-transmembrane 7 (TM7) family. F4/80, also known as EMR1 or Ly71, has been widely used as a murine macrophage marker, which is expressed on the majority of tissue macrophages including peritoneal macrophages, macrophages in lung, gut, thymus and red pulp of spleen (but not on the macrophages located in T cell areas of the spleen, lymph node and Peyer's patch), Kuffer cells, Langerhans cells, and bone marrow stromal cells. F4/80 has also been shown on a subset of dendritic cells. The biological ligand of F4/80 has not been identified, but it has been reported that F4/80 is required for induction of CD8+ T cells-mediated peripheral tolerance. |

Product Details

| | |
|--------------------------------|--|
| Form | Liquid |
| Size | 50Tests/100Tests/100Tests×2 |
| Clone No. | CI:A3-1 |
| Host | Rat |
| Isotype | Rat IgG2b, κ |
| Reactivity | Mouse |
| Application | FCM |
| Isotype Control | Elab Fluor® 488 Rat IgG2b, κ Isotype Control[LTF-2] [Product E-AB-F09842L] |
| Storage Buffer | Phosphate buffered solution, pH 7.2, containing 0.09% stabilizer and 1% protein protectant. |
| Shipping | Biological ice pack at 4 °C |
| Stability & Storage | Keep as concentrated solution. Store at 2~8°C and protected from prolonged exposure to light.Do not freeze. This product is guaranteed up to one year from purchase. |

For Research Use Only

Thank you for your recent purchase.
 If you would like to learn more about antibodies,please visit www.elabscience.com.

**Focus on your research
 Service for life science**

Applications:Activ- Activation; Block- Blocking; Separation- Cell Separation ; Cell Sep-Neg- Cell Separation by Negative Selection; FA- Functional Assay; Neut- Neutralization; Stim- Stimulation; FCM- Flow Cytometry; ICFM: Intracellular Staining for Flow Cytometry; WB- Western Blotting; IHC- Immunohistochemistry; IF- Immunofluorescence; IP- Immunoprecipitation

Fluorophore

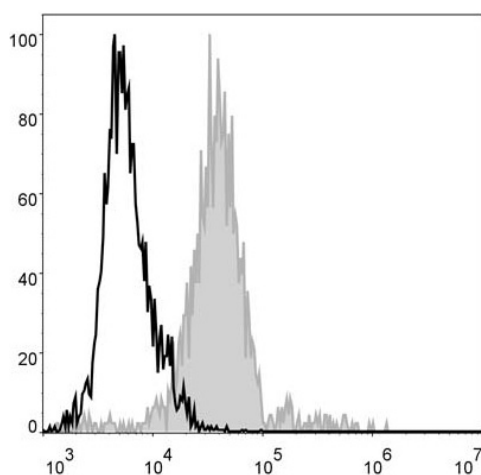
Conjugation: Elab Fluor® 488

Elab Fluor® 488 is designed to be excited by the Blue laser (488 nm) and detected using an optical filter centered near 520 nm (e.g., a 525/40 nm bandpass filter).

Recommended usage

Each lot of this antibody is quality control tested by flow cytometric analysis. The amount of the reagent is suggested to be used 5 µL of antibody per test (million cells in 100 µL staining volume or per 100 µL of whole blood). Please check your vial before the experiment. Since applications vary, the appropriate dilutions must be determined for individual use.

Product data



C57BL/6 murine abdominal macrophages are stained with Elab Fluor® 488 Anti-Mouse F4/80 Antibody (filled gray histogram). Unstained abdominal macrophages (empty black histogram) are used as control.

Related Information

1. Sample Preparation for Flow Cytometry <https://www.elabscience.com/List-detail-5594.html>
2. Staining Cell Surface Targets for Flow Cytometry <https://www.elabscience.com/List-detail-5568.html>
3. Flow Cytometry Troubleshooting Tips <https://www.elabscience.com/List-detail-5593.html>
4. How to select the appropriate detection channel through the spectrogram? <https://www.elabscience.com/List-detail-459742.html>

For Research Use Only

Thank you for your recent purchase.

If you would like to learn more about antibodies, please visit www.elabscience.com.

**Focus on your research
Service for life science**

Applications: Activ- Activation; Block- Blocking; Separation- Cell Separation ; Cell Sep-Neg- Cell Separation by Negative Selection; FA- Functional Assay; Neut- Neutralization; Stim- Stimulation; FCM- Flow Cytometry; ICFCM: Intracellular Staining for Flow Cytometry; WB- Western Blotting; IHC- Immunohistochemistry; IF- Immunofluorescence; IP- Immunoprecipitation