

## PE Anti-Human CD56 Antibody[MEM188]

<b>Catalog No.</b>	E-AB-F1006D	<b>Reactivity</b>	Human
<b>Storage</b>	Store at 2~8°C, Avoid freeze / thaw cycles	<b>Applications</b>	FCM

**Important Note:** Centrifuge before opening to ensure complete recovery of vial contents.

### Antigen Information

<b>Alternate Names</b>	Neural cell adhesion molecule 1,NCAM1,N-CAM-1,NCAM-1,NCAM
<b>Uniprot ID</b>	P13591
<b>Background</b>	CD56 is a single transmembrane glycoprotein also known as NCAM (neural cell adhesion molecule), Leu-19, or NKH1. It is a member of the Ig superfamily. The 140 kD isoform is expressed on NK and NKT cells. CD56 is also expressed in the brain (cerebellum and cortex) and at neuromuscular junctions. Certain large granular lymphocyte (LGL) leukemias, small-cell lung carcinomas, neuronal derived tumors, myelomas, and myeloid leukemias also express CD56. CD56 plays a role in homophilic and heterophilic adhesion via binding to itself or heparan sulfate.

### Product Details

<b>Form</b>	Liquid
<b>Size</b>	20Tests/50Tests/100Tests/200Tests
<b>Clone No.</b>	MEM188
<b>Host</b>	Mouse
<b>Isotype</b>	Mouse IgG2a, κ
<b>Reactivity</b>	Human
<b>Application</b>	FCM
<b>Isotype Control</b>	<a href="#">PE Mouse IgG2a, κ Isotype Control[C1.18.4]</a> <a href="#">[Product E-AB-F09802D]</a>
<b>Storage Buffer</b>	PBS with 0.05% Proclin300, 1% BSA
<b>Shipping</b>	Biological ice pack at 4 °C
<b>Stability &amp; Storage</b>	Keep as concentrated solution. Store at 2~8°C and protected from prolonged exposure to light.Do not freeze. This product is guaranteed up to one year from purchase.

#### For Research Use Only

Thank you for your recent purchase.

If you would like to learn more about antibodies, please visit [www.elabscience.com](http://www.elabscience.com).

**Focus on your research  
Service for life science**

Applications:Activ- Activation; Block- Blocking; Separation- Cell Separation ; Cell Sep-Neg- Cell Separation by Negative Selection; FA- Functional Assay; Neut- Neutralization; Stim- Stimulation; FCM- Flow Cytometry; ICFCM: Intracellular Staining for Flow Cytometry; WB- Western Blotting; IHC- Immunohistochemistry; IF- Immunofluorescence; IP- Immunoprecipitation

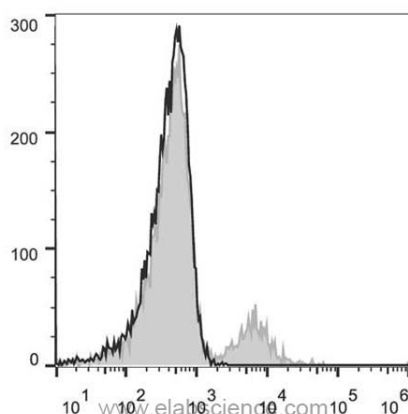
## Fluorophore

**Conjugation:** PE

## Recommended usage

Each lot of this antibody is quality control tested by immunofluorescent staining with flow cytometric analysis. The amount of the reagent is suggested to be used 5  $\mu$ L of antibody per test (million cells in 100  $\mu$ L staining volume or per 100  $\mu$ L of whole blood). Please check your vial before the experiment. Since applications vary, the appropriate dilutions must be determined for individual use.

## Product data



Human peripheral blood lymphocytes are stained with PE Anti-Human CD56 Antibody (filled gray histogram).  
Unstained lymphocytes (empty black histogram) are used as control.

## Related Information

1. Sample Preparation for Flow Cytometry <https://www.elabscience.com/List-detail-5594.html>
2. Staining Cell Surface Targets for Flow Cytometry <https://www.elabscience.com/List-detail-5568.html>
3. Flow Cytometry Troubleshooting Tips <https://www.elabscience.com/List-detail-5593.html>
4. How to select the appropriate detection channel through the spectrogram? <https://www.elabscience.com/List-detail-459742.html>

### For Research Use Only

Thank you for your recent purchase.

If you would like to learn more about antibodies, please visit [www.elabscience.com](http://www.elabscience.com).

**Focus on your research  
Service for life science**

Applications: Activ- Activation; Block- Blocking; Separation- Cell Separation ; Cell Sep-Neg- Cell Separation by Negative Selection; FA- Functional Assay; Neut- Neutralization; Stim- Stimulation; FCM- Flow Cytometry; ICFM: Intracellular Staining for Flow Cytometry; WB- Western Blotting; IHC- Immunohistochemistry; IF- Immunofluorescence; IP- Immunoprecipitation