

FITC Anti-Human CD22 Antibody[BU59]

Catalog No.	E-AB-F1047C	Reactivity	Human
Storage	Store at 2~8°C, Avoid freeze / thaw cycles	Applications	FCM

Important Note: Centrifuge before opening to ensure complete recovery of vial contents.

Antigen Information

Alternate Names	B-cell receptor CD22,Cd22,B-lymphocyte cell adhesion molecule,BL-CAM,Sialic acid-binding Ig-like lectin 2,Siglec-2,T-cell surface antigen Leu-14,CD22,Lyb-8, Siglec2
Uniprot ID	P20273
Background	CD22 is a 130 kD type I transmembrane glycoprotein also known as Siglec-2 and BL-CAM. It is a member of the immunoglobulin superfamily (sialoadhesion subgroup). CD22 is expressed in the cytoplasm of pro-B and pre-B cells, and on the surface of mature B and activated B cells, but not on plasma cells. CD22 is present in the B cell receptor complex and associates with SHP-1, Syk, Lck, Lyn, and phospholipase C γ 1. A primary function of CD22 is thought to be in limiting antigen receptor signaling by modulating B cell activation threshold. CD22 has been shown to bind to CD45RO and CD75, although the natural ligands for this molecule remain controversial.

Product Details

Form	Liquid
Size	20Tests/100Tests/100Tests \times 2
Clone No.	BU59
Host	Mouse
Isotype	Mouse IgG1, κ
Reactivity	Human
Application	FCM
Isotype Control	FITC Mouse IgG1, κ Isotype Control[MOPC-21] [Product E-AB-F09792C]
Storage Buffer	Phosphate buffered solution, pH 7.2, containing 0.09% stabilizer and 1% protein protectant.
Shipping	Biological ice pack at 4 °C
Stability & Storage	Keep as concentrated solution. Store at 2~8°C and protected from prolonged exposure to light.Do not freeze. This product is guaranteed up to one year from purchase.

For Research Use Only

Thank you for your recent purchase.

If you would like to learn more about antibodies,please visit www.elabscience.com.

**Focus on your research
Service for life science**

Applications:Activ- Activation; Block- Blocking; Separation- Cell Separation ; Cell Sep-Neg- Cell Separation by Negative Selection; FA- Functional Assay; Neut- Neutralization; Stim- Stimulation; FCM- Flow Cytometry; ICFM: Intracellular Staining for Flow Cytometry; WB- Western Blotting; IHC- Immunohistochemistry; IF- Immunofluorescence; IP- Immunoprecipitation

Fluorophore

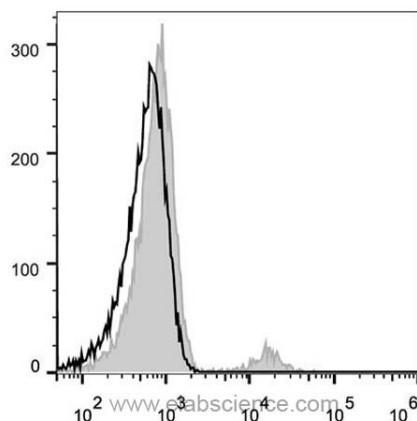
Conjugation: FITC

FITC is designed to be excited by the Blue laser (488 nm) and detected using an optical filter centered near 530 nm (e.g., a 525/40 nm bandpass filter).

Recommended usage

Each lot of this antibody is quality control tested by flow cytometric analysis. The amount of the reagent is suggested to be used 5 µL of antibody per test (million cells in 100 µL staining volume or per 100 µL of whole blood). Please check your vial before the experiment. Since applications vary, the appropriate dilutions must be determined for individual use.

Product data



Human peripheral blood lymphocytes are stained with FITC Anti-Human CD22 Antibody (filled gray histogram).
Unstained lymphocytes (empty black histogram) are used as control.

Related Information

1. Sample Preparation for Flow Cytometry <https://www.elabscience.com/List-detail-5594.html>
2. Staining Cell Surface Targets for Flow Cytometry <https://www.elabscience.com/List-detail-5568.html>
3. Flow Cytometry Troubleshooting Tips <https://www.elabscience.com/List-detail-5593.html>
4. How to select the appropriate detection channel through the spectrogram? <https://www.elabscience.com/List-detail-459742.html>

For Research Use Only

Thank you for your recent purchase.

If you would like to learn more about antibodies, please visit www.elabscience.com.

**Focus on your research
Service for life science**

Applications: Activ- Activation; Block- Blocking; Separation- Cell Separation ; Cell Sep-Neg- Cell Separation by Negative Selection; FA- Functional Assay; Neut- Neutralization; Stim- Stimulation; FCM- Flow Cytometry; ICFM: Intracellular Staining for Flow Cytometry; WB- Western Blotting; IHC- Immunohistochemistry; IF- Immunofluorescence; IP- Immunoprecipitation