

## PE/Cyanine5 Anti-Mouse CD183/CXCR3 Antibody[CXCR3-173]

<b>Catalog No.</b>	E-AB-F1114G	<b>Reactivity</b>	Mouse
<b>Storage</b>	Store at 2~8°C, Avoid freeze / thaw cycles	<b>Applications</b>	FCM

**Important Note:** Centrifuge before opening to ensure complete recovery of vial contents.

### Antigen Information

<b>Alternate Names</b>	C-X-C chemokine receptor type 3,Cxcr3,CXC-R3,CXCR-3,Interferon-inducible protein 10 receptor,IP-10 receptor,CD183
<b>Uniprot ID</b>	O88410
<b>Background</b>	CD183, also known as CXCR3, is a member of the C-X-C chemokine family, characterized by a pair of cysteine residues separated by a single amino acid. CXCR3 is a 38 kD seven pass transmembrane receptor coupled to G-protein. It mediates Ca <sup>2+</sup> mobilization and chemotaxis in response to C-X-C chemokines, such as IP10 (CXCL10), MIG (CXCL9), I-TAC (CXCL11) and PF4 (CXCL4). CXCR3 is expressed primarily on activated T lymphocytes, NK cells, and some epithelial cells and endothelial cells. It is not expressed on B cells, monocytes or granulocytes.

### Product Details

<b>Form</b>	Liquid
<b>Size</b>	50Tests/100Tests/100Tests×2
<b>Clone No.</b>	CXCR3-173
<b>Host</b>	Armenian Hamster
<b>Isotype</b>	Armenian Hamster IgG
<b>Reactivity</b>	Mouse
<b>Application</b>	FCM
<b>Isotype Control</b>	<a href="#">[Product E-AB-F09852G]</a>
<b>Storage Buffer</b>	Phosphate buffered solution, pH 7.2, containing 0.09% stabilizer and 1% protein protectant.
<b>Shipping</b>	Biological ice pack at 4 °C
<b>Stability &amp; Storage</b>	Keep as concentrated solution. Store at 2~8°C and protected from prolonged exposure to light.Do not freeze. This product is guaranteed up to one year from purchase.

#### For Research Use Only

Thank you for your recent purchase.

If you would like to learn more about antibodies,please visit [www.elabscience.com](http://www.elabscience.com).

**Focus on your research  
Service for life science**

Applications:Activ- Activation; Block- Blocking; Separation- Cell Separation ; Cell Sep-Neg- Cell Separation by Negative Selection; FA- Functional Assay; Neut- Neutralization; Stim- Stimulation; FCM- Flow Cytometry; ICFCM: Intracellular Staining for Flow Cytometry; WB- Western Blotting; IHC- Immunohistochemistry; IF- Immunofluorescence; IP- Immunoprecipitation

## Fluorophore

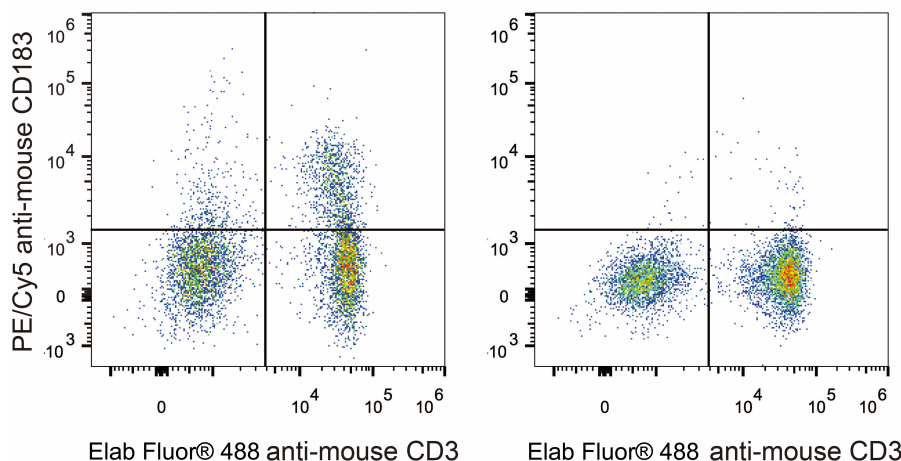
**Conjugation:** PE/Cyanine5

PE/Cyanine5 is designed to be excited by the Blue (488 nm), Green (532 nm) and yellow-green (561 nm) lasers and detected using an optical filter centered near 670 nm (e.g., a 690/50 nm bandpass filter).

## Recommended usage

Each lot of this antibody is quality control tested by flow cytometric analysis. The amount of the reagent is suggested to be used 5  $\mu$ L of antibody per test (million cells in 100  $\mu$ L staining volume or per 100  $\mu$ L of whole blood). Please check your vial before the experiment. Since applications vary, the appropriate dilutions must be determined for individual use.

## Product data



C57BL/6 murine splenocytes are stained with PE/Cyanine5 Anti-Mouse CD183/CXCR3 Antibody and Elab Fluor® 488 Anti-Mouse CD3 Antibody (Left). Splenocytes stained with Elab Fluor® 488 Anti-Mouse CD3 Antibody (Right) are used as control.

## Related Information

1. Sample Preparation for Flow Cytometry <https://www.elabscience.com/List-detail-5594.html>
2. Staining Cell Surface Targets for Flow Cytometry <https://www.elabscience.com/List-detail-5568.html>
3. Flow Cytometry Troubleshooting Tips <https://www.elabscience.com/List-detail-5593.html>
4. How to select the appropriate detection channel through the spectrogram? <https://www.elabscience.com/List-detail-459742.html>

### For Research Use Only

Thank you for your recent purchase.

If you would like to learn more about antibodies, please visit [www.elabscience.com](http://www.elabscience.com).

**Focus on your research  
Service for life science**

Applications: Activ- Activation; Block- Blocking; Separation- Cell Separation ; Cell Sep-Neg- Cell Separation by Negative Selection; FA- Functional Assay; Neut- Neutralization; Stim- Stimulation; FCM- Flow Cytometry; ICFCM- Intracellular Staining for Flow Cytometry; WB- Western Blotting; IHC- Immunohistochemistry; IF- Immunofluorescence; IP- Immunoprecipitation