

## PE Anti-Human CD235 Antibody[HIR2]

<b>Catalog No.</b>	E-AB-F1080D	<b>Reactivity</b>	Human
<b>Storage</b>	Store at 2~8°C, Avoid freeze / thaw cycles	<b>Applications</b>	FCM

**Important Note:** Centrifuge before opening to ensure complete recovery of vial contents.

### Antigen Information

<b>Alternate Names</b>	Glycophorin-A/B,GYP A/B,MN sialoglycoprotein,SS-active sialoglycoprotein,PAS-2/3,Sialoglycoprotein alpha/delta,CD235a/b
<b>Uniprot ID</b>	P02724,P06028
<b>Background</b>	The HIR2 antibody reacts with a common epitope of glycophorin A (CD235a) and glycophorin B (CD235b). Glycophorin A is the major sialoglycoprotein expressed on red blood cell membrane, and erythroid precursors. Glycophorin A shares strong homology with glycophorin B. The HIR2 antibody recognizes human RBCs and erythroid precursors and is useful in erythroid cell development studies. Mature, non-nucleated red blood cells are characteristically glycophorin A positive, but CD45 and CD71 negative.

### Product Details

<b>Form</b>	Liquid
<b>Size</b>	20Tests/100Tests/100Tests×2
<b>Clone No.</b>	HIR2
<b>Host</b>	Mouse
<b>Isotype</b>	Mouse IgG2b, κ
<b>Reactivity</b>	Human
<b>Application</b>	FCM
<b>Isotype Control</b>	<a href="#">PE Mouse IgG2b, κ Isotype Control[MPC-11]</a> [ <a href="#">Product E-AB-F09812D</a> ]
<b>Storage Buffer</b>	Phosphate buffered solution, pH 7.2, containing 0.09% stabilizer and 1% protein protectant.
<b>Shipping</b>	Biological ice pack at 4 °C
<b>Stability &amp; Storage</b>	Keep as concentrated solution. Store at 2~8°C and protected from prolonged exposure to light.Do not freeze. This product is guaranteed up to one year from purchase.

#### For Research Use Only

Thank you for your recent purchase.

If you would like to learn more about antibodies,please visit [www.elabscience.com](http://www.elabscience.com).

**Focus on your research  
Service for life science**

Applications:Activ- Activation; Block- Blocking; Separation- Cell Separation ; Cell Sep-Neg- Cell Separation by Negative Selection; FA- Functional Assay; Neut- Neutralization; Stim- Stimulation; FCM- Flow Cytometry; ICFM: Intracellular Staining for Flow Cytometry; WB- Western Blotting; IHC- Immunohistochemistry; IF- Immunofluorescence; IP- Immunoprecipitation

## Fluorophore

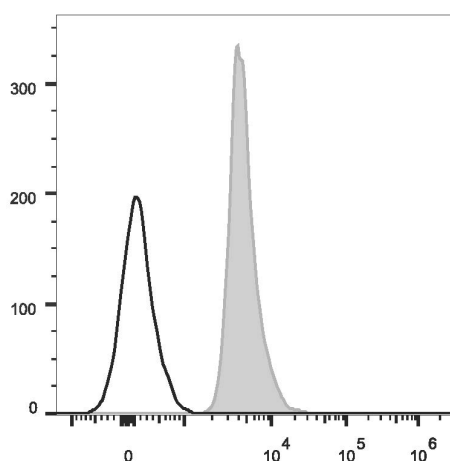
### Conjugation: PE

PE is designed to be excited by the Blue (488 nm), Green (532 nm) and Yellow-Green (561 nm) lasers and detected using an optical filter centered near 575 nm (e.g., a 585/42 nm bandpass filter).

## Recommended usage

Each lot of this antibody is quality control tested by flow cytometric analysis. The amount of the reagent is suggested to be used 5 µL of antibody per test (million cells in 100 µL staining volume or per 100 µL of whole blood). Please check your vial before the experiment. Since applications vary, the appropriate dilutions must be determined for individual use.

## Product data



Human peripheral blood red blood cells are stained with PE Anti-Human CD235 Antibody (filled gray histogram).  
Unstained red blood cells (empty black histogram) are used as control.

## Related Information

1. Sample Preparation for Flow Cytometry <https://www.elabscience.com/List-detail-5594.html>
2. Staining Cell Surface Targets for Flow Cytometry <https://www.elabscience.com/List-detail-5568.html>
3. Flow Cytometry Troubleshooting Tips <https://www.elabscience.com/List-detail-5593.html>
4. How to select the appropriate detection channel through the spectrogram? <https://www.elabscience.com/List-detail-459742.html>

### For Research Use Only

Thank you for your recent purchase.

If you would like to learn more about antibodies, please visit [www.elabscience.com](http://www.elabscience.com).

**Focus on your research  
Service for life science**

Applications: Activ- Activation; Block- Blocking; Separation- Cell Separation ; Cell Sep-Neg- Cell Separation by Negative Selection; FA- Functional Assay; Neut- Neutralization; Stim- Stimulation; FCM- Flow Cytometry; ICFM: Intracellular Staining for Flow Cytometry; WB- Western Blotting; IHC- Immunohistochemistry; IF- Immunofluorescence; IP- Immunoprecipitation