

PE Anti-Human IgM Antibody[MHM-88]

Catalog No.	E-AB-F1172D	Reactivity	Human
Storage	Store at 2~8°C, Avoid freeze / thaw cycles	Applications	FCM

Important Note: Centrifuge before opening to ensure complete recovery of vial contents.

Antigen Information

Alternate Names	Immunoglobulin heavy constant mu,IGHM,Immunoglobulin M
Uniprot ID	P01871
Background	IgM is the first immunoglobulin made by B cells in the immune response. Surface IgM is expressed on immature and mature B cells, while IgM heavy (μ) chain is expressed intracellularly in pre-B cells.

Product Details

Form	Liquid
Size	20Tests/100Tests/100Tests×2
Clone No.	MHM-88
Host	Mouse
Isotype	Mouse IgG1, κ
Reactivity	Human
Application	FCM
Isotype Control	PE Mouse IgG1, κ Isotype Control[MOPC-21] [Product E-AB-F09792D]
Storage Buffer	Phosphate buffered solution, pH 7.2, containing 0.09% stabilizer and 1% protein protectant.
Shipping	Biological ice pack at 4 °C
Stability & Storage	Keep as concentrated solution. Store at 2~8°C and protected from prolonged exposure to light.Do not freeze. This product is guaranteed up to one year from purchase.

For Research Use Only

Thank you for your recent purchase.

If you would like to learn more about antibodies,please visit www.elabscience.com.

**Focus on your research
Service for life science**

Applications:Activ- Activation; Block- Blocking; Separation- Cell Separation ; Cell Sep-Neg- Cell Separation by Negative Selection; FA- Functional Assay; Neut- Neutralization; Stim- Stimulation; FCM- Flow Cytometry; ICFM: Intracellular Staining for Flow Cytometry; WB- Western Blotting; IHC- Immunohistochemistry; IF- Immunofluorescence; IP- Immunoprecipitation

Fluorophore

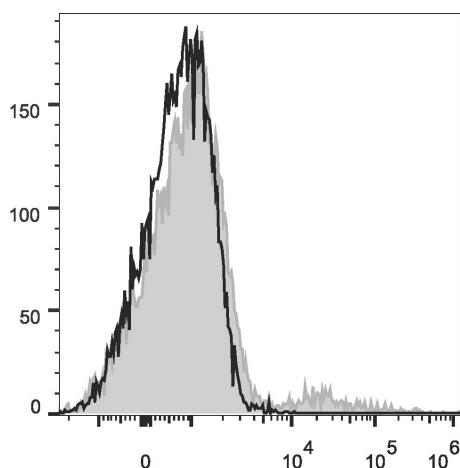
Conjugation: PE

PE is designed to be excited by the Blue (488 nm), Green (532 nm) and Yellow-Green (561 nm) lasers and detected using an optical filter centered near 575 nm (e.g., a 585/42 nm bandpass filter).

Recommended usage

Each lot of this antibody is quality control tested by flow cytometric analysis. The amount of the reagent is suggested to be used 5 μ L of antibody per test (million cells in 100 μ L staining volume or per 100 μ L of whole blood). Please check your vial before the experiment. Since applications vary, the appropriate dilutions must be determined for individual use.

Product data



Human peripheral blood lymphocytes are stained with PE Anti-Human IgM Antibody (filled gray histogram) or Mouse IgG1 Isotype Control PE (empty black histogram).

Related Information

1. Sample Preparation for Flow Cytometry <https://www.elabscience.com/List-detail-5594.html>
2. Staining Cell Surface Targets for Flow Cytometry <https://www.elabscience.com/List-detail-5568.html>
3. Flow Cytometry Troubleshooting Tips <https://www.elabscience.com/List-detail-5593.html>
4. How to select the appropriate detection channel through the spectrogram? <https://www.elabscience.com/List-detail-459742.html>

For Research Use Only

Thank you for your recent purchase.

If you would like to learn more about antibodies, please visit www.elabscience.com.

**Focus on your research
Service for life science**

Applications: Activ- Activation; Block- Blocking; Separation- Cell Separation ; Cell Sep-Neg- Cell Separation by Negative Selection; FA- Functional Assay; Neut- Neutralization; Stim- Stimulation; FCM- Flow Cytometry; ICFM: Intracellular Staining for Flow Cytometry; WB- Western Blotting; IHC- Immunohistochemistry; IF- Immunofluorescence; IP- Immunoprecipitation