

FITC Anti-Mouse CD14 Antibody[Sa14-2]

Catalog No.	E-AB-F1176C	Reactivity	Mouse
Storage	Store at 2~8°C, Avoid freeze / thaw cycles	Applications	FCM

Important Note: Centrifuge before opening to ensure complete recovery of vial contents.

Antigen Information

Alternate Names	CD 14, Myeloid cell-specific leucine-rich glycoprotein, Monocyte differentiation antigen CD14
Uniprot ID	P10810
Background	CD14 is a 53-55 kD glycosylphosphatidylinositol (GPI)-linked membrane glycoprotein also known as LPS receptor. CD14 is expressed on macrophages, dendritic cells, Kupffer cells, hepatocytes, and granulocytes. As a high-affinity receptor for LPS-LBP (LPS-binding protein) complex, CD14, in association with Toll-like Receptor 4 (TLR4) or 2 (TLR2), is involved in the clearance of gram-negative pathogens.

Product Details

Form	Liquid
Size	50Tests/100Tests/100Tests×2
Clone No.	Sa14-2
Host	Rat
Isotype	Rat IgG2a, κ
Reactivity	Mouse
Application	FCM
Isotype Control	FITC Rat IgG2a, κ Isotype Control[2A3] [Product E-AB-F09832C]
Storage Buffer	Phosphate buffered solution, pH 7.2, containing 0.09% stabilizer and 1% protein protectant.
Shipping	Biological ice pack at 4 °C
Stability & Storage	Keep as concentrated solution. Store at 2~8°C and protected from prolonged exposure to light. Do not freeze. This product is guaranteed up to one year from purchase.

For Research Use Only

Thank you for your recent purchase.

If you would like to learn more about antibodies, please visit www.elabscience.com.

**Focus on your research
Service for life science**

Applications: Activ- Activation; Block- Blocking; Separation- Cell Separation ; Cell Sep-Neg- Cell Separation by Negative Selection; FA- Functional Assay; Neut- Neutralization; Stim- Stimulation; FCM- Flow Cytometry; ICFM: Intracellular Staining for Flow Cytometry; WB- Western Blotting; IHC- Immunohistochemistry; IF- Immunofluorescence; IP- Immunoprecipitation

Fluorophore

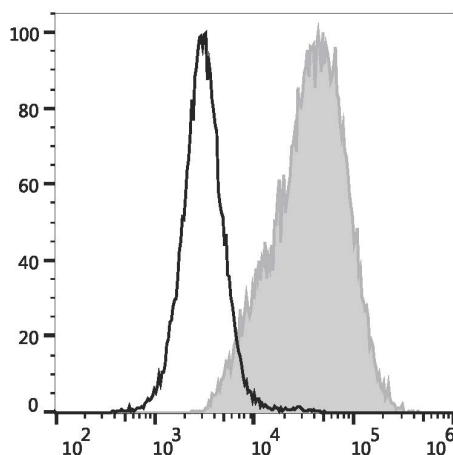
Conjugation: FITC

FITC is designed to be excited by the Blue laser (488 nm) and detected using an optical filter centered near 530 nm (e.g., a 525/40 nm bandpass filter).

Recommended usage

Each lot of this antibody is quality control tested by flow cytometric analysis. The amount of the reagent is suggested to be used 5 μ L of antibody per test (million cells in 100 μ L staining volume or per 100 μ L of whole blood). Please check your vial before the experiment. Since applications vary, the appropriate dilutions must be determined for individual use.

Product data



Raw264.7 cells are stained with FITC Anti-Mouse CD14 Antibody (filled gray histogram) or FITC Rat IgG2a, κ Isotype Control(empty black histogram).

Related Information

1. Sample Preparation for Flow Cytometry <https://www.elabscience.com/List-detail-5594.html>
2. Staining Cell Surface Targets for Flow Cytometry <https://www.elabscience.com/List-detail-5568.html>
3. Flow Cytometry Troubleshooting Tips <https://www.elabscience.com/List-detail-5593.html>
4. How to select the appropriate detection channel through the spectrogram? <https://www.elabscience.com/List-detail-459742.html>

For Research Use Only

Thank you for your recent purchase.

If you would like to learn more about antibodies, please visit www.elabscience.com.

**Focus on your research
Service for life science**

Applications: Activ- Activation; Block- Blocking; Separation- Cell Separation ; Cell Sep-Neg- Cell Separation by Negative Selection; FA- Functional Assay; Neut- Neutralization; Stim- Stimulation; FCM- Flow Cytometry; ICFM: Intracellular Staining for Flow Cytometry; WB- Western Blotting; IHC- Immunohistochemistry; IF- Immunofluorescence; IP- Immunoprecipitation