

PE Anti-Human IL-2 Antibody[MQ1-17H12]

Catalog No.	E-AB-F1200D	Reactivity	Human
Storage	Store at 2~8°C, Avoid freeze / thaw cycles	Applications	ICFCM

Important Note: Centrifuge before opening to ensure complete recovery of vial contents.

Antigen Information

Alternate Names	Interleukin-2,IL-2,T-cell growth factor,TCGF,IL2
Uniprot ID	P60568
Gene ID	3558
Background	IL-2 is a potent lymphoid cell growth factor which exerts its biological activity primarily on T cells, promoting proliferation and maturation. Additionally, IL-2 has been found to stimulate growth and differentiation of B cells, NK cells, LAK cells, monocytes, and oligodendrocytes.

Product Details

Form	Liquid
Size	20Tests/100Tests/100Tests×2
Clone No.	MQ1-17H12
Host	Rat
Isotype	Rat IgG2a, κ
Reactivity	Human
Application	ICFCM
Isotype Control	PE Rat IgG2a, κ Isotype Control[2A3] [Product E-AB-F09832D]
Storage Buffer	Phosphate buffered solution, pH 7.2, containing 0.09% stabilizer and 1% protein protectant.
Shipping	Biological ice pack at 4 °C
Stability & Storage	Keep as concentrated solution. Store at 2~8°C and protected from prolonged exposure to light.Do not freeze. This product is guaranteed up to one year from purchase.

For Research Use Only

Thank you for your recent purchase.

If you would like to learn more about antibodies,please visit www.elabscience.com.

**Focus on your research
Service for life science**

Applications:Activ- Activation; Block- Blocking; Separation- Cell Separation ; Cell Sep-Neg- Cell Separation by Negative Selection; FA- Functional Assay; Neut- Neutralization; Stim- Stimulation; FCM- Flow Cytometry; ICFCM: Intracellular Staining for Flow Cytometry; WB- Western Blotting; IHC- Immunohistochemistry; IF- Immunofluorescence; IP- Immunoprecipitation

Fluorophore

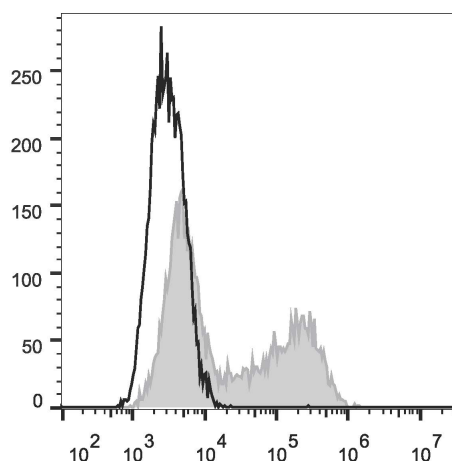
Conjugation: PE

PE is designed to be excited by the Blue (488 nm), Green (532 nm) and Yellow-Green (561 nm) lasers and detected using an optical filter centered near 575 nm (e.g., a 585/42 nm bandpass filter).

Recommended usage

Each lot of this antibody is quality control tested by flow cytometric analysis. The amount of the reagent is suggested to be used 5 μ L of antibody per test (million cells in 100 μ L staining volume or per 100 μ L of whole blood). Please check your vial before the experiment. Since applications vary, the appropriate dilutions must be determined for individual use.

Product data



HEK293T cells transiently transfected with pcDNA3.1 plasmid encoding Human IL-2 gene are stained with PE Anti-Human IL-2 Antibody (filled gray histogram) or PE Rat IgG2a, κ Isotype Control (empty black histogram).

Related Information

1. Sample Preparation for Flow Cytometry <https://www.elabscience.com/List-detail-5594.html>
2. Staining Intracellular Antigens for Flow Cytometry <https://www.elabscience.com/List-detail-5570.html>
3. Flow Cytometry Troubleshooting Tips <https://www.elabscience.com/List-detail-5593.html>
4. How to select the appropriate detection channel through the spectrogram? <https://www.elabscience.com/List-detail-459742.html>

For Research Use Only

Thank you for your recent purchase.

If you would like to learn more about antibodies, please visit www.elabscience.com.

**Focus on your research
Service for life science**

Applications: Activ- Activation; Block- Blocking; Separation- Cell Separation ; Cell Sep-Neg- Cell Separation by Negative Selection; FA- Functional Assay; Neut- Neutralization; Stim- Stimulation; FCM- Flow Cytometry; ICFM: Intracellular Staining for Flow Cytometry; WB- Western Blotting; IHC- Immunohistochemistry; IF- Immunofluorescence; IP- Immunoprecipitation