

## PE/Cyanine7 Anti-Human CD24 Antibody[ML5]

<b>Catalog No.</b>	E-AB-F1147H	<b>Reactivity</b>	Human
<b>Storage</b>	Store at 2~8°C, Avoid freeze / thaw cycles	<b>Applications</b>	FCM

**Important Note:** Centrifuge before opening to ensure complete recovery of vial contents.

### Antigen Information

<b>Alternate Names</b>	GPI linked surface mucin,Heat stable antigen,HSA,Nectadrin,Signal transducer CD24
<b>Uniprot ID</b>	P25063
<b>Background</b>	CD24 is a 35-45 kD glycosylphosphatidylinositol (GPI)-linked protein also known as heat stable antigen (HSA), BA-1, Ly-52, and nectadrin. It is expressed on the surface of B cells (but not plasma cells), granulocytes, follicular dendritic cells, and epithelial cells. CD24 may play a role in the regulation of B-cell proliferation and maturation. CD24 crosslinking induces a Ca <sup>2+</sup> flux in mature B cells. CD24 has been shown to interact with CD62P (P-selectin).

### Product Details

<b>Form</b>	Liquid
<b>Size</b>	20Tests/100Tests/100Tests×2
<b>Clone No.</b>	ML5
<b>Host</b>	Mouse
<b>Isotype</b>	Mouse IgG2a, κ
<b>Reactivity</b>	Human
<b>Application</b>	FCM
<b>Isotype Control</b>	<a href="#">PE/Cyanine7 Mouse IgG2a, κ Isotype Control[C1.18.4] [Product E-AB-F09802H]</a>
<b>Storage Buffer</b>	Phosphate buffered solution, pH 7.2, containing 0.09% stabilizer and 1% protein protectant.
<b>Shipping</b>	Biological ice pack at 4 °C
<b>Stability &amp; Storage</b>	Keep as concentrated solution. Store at 2~8°C and protected from prolonged exposure to light.Do not freeze. This product is guaranteed up to one year from purchase.

#### For Research Use Only

Thank you for your recent purchase.

If you would like to learn more about antibodies,please visit [www.elabscience.com](http://www.elabscience.com).

**Focus on your research  
Service for life science**

Applications:Activ- Activation; Block- Blocking; Separation- Cell Separation ; Cell Sep-Neg- Cell Separation by Negative Selection; FA- Functional Assay; Neut- Neutralization; Stim- Stimulation; FCM- Flow Cytometry; ICFM: Intracellular Staining for Flow Cytometry; WB- Western Blotting; IHC- Immunohistochemistry; IF- Immunofluorescence; IP- Immunoprecipitation

## Fluorophore

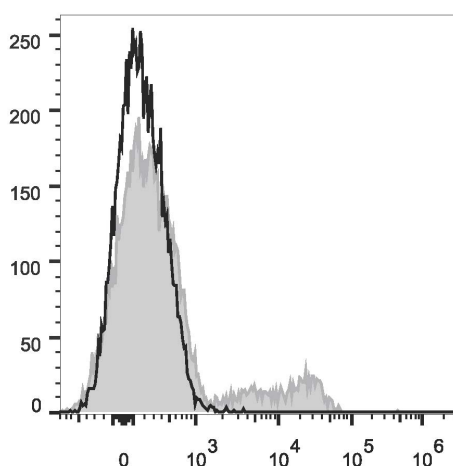
**Conjugation:** PE/Cyanine7

PE/Cyanine7 is designed to be excited by the Blue (488 nm), Green (532 nm) and yellow-green (561 nm) lasers and detected using an optical filter centered near 775 nm (e.g., a 780/60 nm bandpass filter).

## Recommended usage

Each lot of this antibody is quality control tested by flow cytometric analysis. The amount of the reagent is suggested to be used 5 µL of antibody per test (million cells in 100 µL staining volume or per 100 µL of whole blood). Please check your vial before the experiment. Since applications vary, the appropriate dilutions must be determined for individual use.

## Product data



Human peripheral blood lymphocytes are stained with PE/Cyanine7 Anti-Human CD24 Antibody (filled gray histogram). Unstained lymphocytes (empty black histogram) are used as control.

## Related Information

1. Sample Preparation for Flow Cytometry <https://www.elabscience.com/List-detail-5594.html>
2. Staining Cell Surface Targets for Flow Cytometry <https://www.elabscience.com/List-detail-5568.html>
3. Flow Cytometry Troubleshooting Tips <https://www.elabscience.com/List-detail-5593.html>
4. How to select the appropriate detection channel through the spectrogram? <https://www.elabscience.com/List-detail-459742.html>

### For Research Use Only

Thank you for your recent purchase.

If you would like to learn more about antibodies, please visit [www.elabscience.com](http://www.elabscience.com).

**Focus on your research  
Service for life science**

Applications: Activ- Activation; Block- Blocking; Separation- Cell Separation ; Cell Sep-Neg- Cell Separation by Negative Selection; FA- Functional Assay; Neut- Neutralization; Stim- Stimulation; FCM- Flow Cytometry; ICFM: Intracellular Staining for Flow Cytometry; WB- Western Blotting; IHC- Immunohistochemistry; IF- Immunofluorescence; IP- Immunoprecipitation