

## Elab Fluor® 488 Anti-Human/Mouse/Rat CD47 Antibody[MIAP410]

<b>Catalog No.</b>	E-AB-F1016UL	<b>Reactivity</b>	Human,Mouse,Rat
<b>Storage</b>	Store at 2~8°C, Avoid freeze / thaw cycles	<b>Applications</b>	FCM

**Important Note:** Centrifuge before opening to ensure complete recovery of vial contents.

### Antigen Information

<b>Alternate Names</b>	Leukocyte surface antigen CD47,Cd47,Integrin-associated protein,IAP
<b>Uniprot ID</b>	Q08722,Q61735,P97829
<b>Background</b>	CD47, also known as Integrin-Associated Protein (IAP), is a membrane protein of about 50 kD with an IgV-like extracellular domain, a five membrane-spanning segment and a short terminal cytoplasmic region. It is widely expressed on many cell types and often associated with beta 3 integrins. It has been reported that CD47 functions as a self marker. Red cells lacking CD47 were rapidly cleared from the bloodstream by splenic macrophages. By binding to SIRP $\alpha$ , CD47 controls hemostatic innate immune functions, such as phagocytosis and cell trafficking.

### Product Details

<b>Form</b>	Liquid
<b>Concentration</b>	0.5 mg/mL
<b>Size</b>	25 $\mu$ g/100 $\mu$ g
<b>Clone No.</b>	MIAP410
<b>Host</b>	Mouse
<b>Isotype</b>	Mouse IgG1, $\kappa$
<b>Reactivity</b>	Human,Mouse,Rat
<b>Application</b>	FCM
<b>Isotype Control</b>	<a href="#">Elab Fluor® 488 Mouse IgG1, <math>\kappa</math> Isotype Control[MOPC-21] [Product E-AB-F09793L]</a>
<b>Storage Buffer</b>	Phosphate buffered solution, pH 7.2, containing 0.09% stabilizer and 1% protein protectant.
<b>Shipping</b>	Biological ice pack at 4 °C
<b>Stability &amp; Storage</b>	Keep as concentrated solution. Store at 2~8°C and protected from prolonged exposure to light.Do not freeze. This product is guaranteed up to one year from purchase.

#### For Research Use Only

Thank you for your recent purchase.

If you would like to learn more about antibodies, please visit [www.elabscience.com](http://www.elabscience.com).

**Focus on your research  
Service for life science**

Applications: Activ- Activation; Block- Blocking; Separation- Cell Separation ; Cell Sep-Neg- Cell Separation by Negative Selection; FA- Functional Assay; Neut- Neutralization; Stim- Stimulation; FCM- Flow Cytometry; ICFM: Intracellular Staining for Flow Cytometry; WB- Western Blotting; IHC- Immunohistochemistry; IF- Immunofluorescence; IP- Immunoprecipitation

## Fluorophore

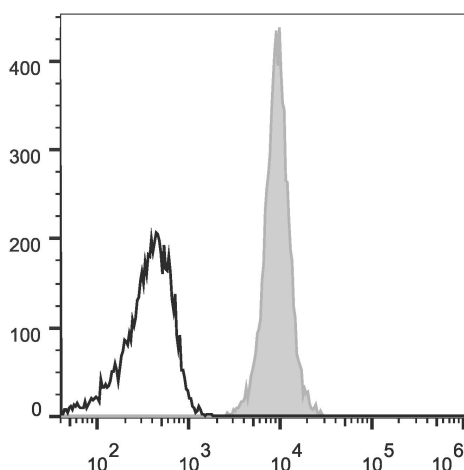
**Conjugation:** Elab Fluor® 488

Elab Fluor® 488 is designed to be excited by the Blue laser (488 nm) and detected using an optical filter centered near 520 nm (e.g., a 525/40 nm bandpass filter).

## Recommended usage

Each lot of this antibody is quality control tested by flow cytometric analysis. Please check your vial before the experiment. Since applications vary, the appropriate dilutions must be determined for individual use. We suggest each investigator should titrate the reagent to obtain optimal results [The recommended concentration is 0.1-1 µg/10<sup>6</sup> cells in 100 µL volume].

## Product data



C57BL/6 murine splenocytes are stained with Elab Fluor® 488 Anti-Human/Mouse/Rat CD47 Antibody (filled gray histogram). Unstained splenocytes (empty black histogram) are used as control.

## Related Information

1. Sample Preparation for Flow Cytometry <https://www.elabscience.com/List-detail-5594.html>
2. Staining Cell Surface Targets for Flow Cytometry <https://www.elabscience.com/List-detail-5568.html>
3. Flow Cytometry Troubleshooting Tips <https://www.elabscience.com/List-detail-5593.html>
4. How to select the appropriate detection channel through the spectrogram? <https://www.elabscience.com/List-detail-459742.html>

### For Research Use Only

Thank you for your recent purchase.

If you would like to learn more about antibodies, please visit [www.elabscience.com](http://www.elabscience.com).

**Focus on your research  
Service for life science**

Applications: Activ- Activation; Block- Blocking; Separation- Cell Separation ; Cell Sep-Neg- Cell Separation by Negative Selection; FA- Functional Assay; Neut- Neutralization; Stim- Stimulation; FCM- Flow Cytometry; ICFM: Intracellular Staining for Flow Cytometry; WB- Western Blotting; IHC- Immunohistochemistry; IF- Immunofluorescence; IP- Immunoprecipitation