

Elab Fluor® 488 Anti-Mouse CD183/CXCR3 Antibody[CXCR3-173]

Catalog No.	E-AB-F1114UL	Reactivity	Mouse
Storage	Store at 2~8°C, Avoid freeze / thaw cycles	Applications	FCM

Important Note: Centrifuge before opening to ensure complete recovery of vial contents.

Antigen Information

Alternate Names	C-X-C chemokine receptor type 3,Cxcr3,CXC-R3,CXCR-3,Interferon-inducible protein 10 receptor,IP-10 receptor,CD183/CXCR3
Uniprot ID	O88410
Background	CD183/CXCR3, also known as CXCR3, is a member of the C-X-C chemokine family, characterized by a pair of cysteine residues separated by a single amino acid. CXCR3 is a 38 kD seven pass transmembrane receptor coupled to G-protein. It mediates Ca ²⁺ mobilization and chemotaxis in response to C-X-C chemokines, such as IP10 (CXCL10), MIG (CXCL9), I-TAC (CXCL11) and PF4 (CXCL4). CXCR3 is expressed primarily on activated T lymphocytes, NK cells, and some epithelial cells and endothelial cells. It is not expressed on B cells, monocytes or granulocytes.

Product Details

Form	Liquid
Concentration	0.5 mg/mL
Size	25µg/100µg
Clone No.	CXCR3-173
Host	Armenian Hamster
Isotype	Armenian Hamster IgG
Reactivity	Mouse
Application	FCM
Isotype Control	Elab Fluor® 488 Armenian Hamster IgG Isotype Control[PIP] [Product E-AB-F09853L]
Storage Buffer	Phosphate buffered solution, pH 7.2, containing 0.09% stabilizer and 1% protein protectant.
Shipping	Biological ice pack at 4 °C
Stability & Storage	Keep as concentrated solution. Store at 2~8°C and protected from prolonged exposure to light.Do not freeze. This product is guaranteed up to one year from purchase.

For Research Use Only

Thank you for your recent purchase.

If you would like to learn more about antibodies, please visit www.elabscience.com.

**Focus on your research
Service for life science**

Applications: Activ- Activation; Block- Blocking; Separation- Cell Separation ; Cell Sep-Neg- Cell Separation by Negative Selection; FA- Functional Assay; Neut- Neutralization; Stim- Stimulation; FCM- Flow Cytometry; ICFM: Intracellular Staining for Flow Cytometry; WB- Western Blotting; IHC- Immunohistochemistry; IF- Immunofluorescence; IP- Immunoprecipitation

Fluorophore

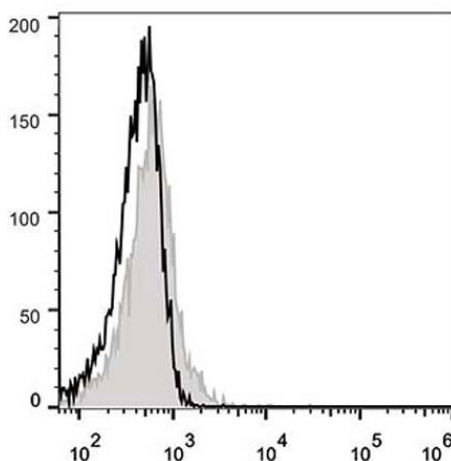
Conjugation: Elab Fluor® 488

Elab Fluor® 488 is designed to be excited by the Blue laser (488 nm) and detected using an optical filter centered near 520 nm (e.g., a 525/40 nm bandpass filter).

Recommended usage

Each lot of this antibody is quality control tested by flow cytometric analysis. Please check your vial before the experiment. Since applications vary, the appropriate dilutions must be determined for individual use. We suggest each investigator should titrate the reagent to obtain optimal results [The recommended concentration is 0.1-1 µg/10⁶ cells in 100 µL volume].

Product data



C57BL/6 murine splenocytes are stained with Elab Fluor® 488 Anti-Mouse CD183/CXCR3 Antibody (filled gray histogram). Unstained splenocytes (empty black histogram) are used as control.

Related Information

1. Sample Preparation for Flow Cytometry <https://www.elabscience.com/List-detail-5594.html>
2. Staining Cell Surface Targets for Flow Cytometry <https://www.elabscience.com/List-detail-5568.html>
3. Flow Cytometry Troubleshooting Tips <https://www.elabscience.com/List-detail-5593.html>
4. How to select the appropriate detection channel through the spectrogram? <https://www.elabscience.com/List-detail-459742.html>

For Research Use Only

Thank you for your recent purchase.

If you would like to learn more about antibodies, please visit www.elabscience.com.

**Focus on your research
Service for life science**

Applications: Activ- Activation; Block- Blocking; Separation- Cell Separation ; Cell Sep-Neg- Cell Separation by Negative Selection; FA- Functional Assay; Neut- Neutralization; Stim- Stimulation; FCM- Flow Cytometry; ICFM: Intracellular Staining for Flow Cytometry; WB- Western Blotting; IHC- Immunohistochemistry; IF- Immunofluorescence; IP- Immunoprecipitation