

## PE Anti-Mouse CD41 Antibody[MWReg30]

<b>Catalog No.</b>	E-AB-F1183UD	<b>Reactivity</b>	Mouse
<b>Storage</b>	Store at 2~8°C, Avoid freeze / thaw cycles	<b>Applications</b>	FCM

**Important Note:** Centrifuge before opening to ensure complete recovery of vial contents.

### Antigen Information

<b>Alternate Names</b>	Itga2b,GPalphalib,CD41,GPIIb
<b>Uniprot ID</b>	Q9QUM0
<b>Background</b>	CD41, also known as integrin $\alpha$ 2b and GPIIb, is a transmembrane glycoprotein that is expressed by platelets and megakaryocytes. It was reported that CD41 is also expressed on hematopoietic progenitors. CD41 associates with CD61 (integrin $\beta$ 3) to form complexes that interact with fibrinogen, fibronectin, von Willebrand factor, and thrombin. CD41 is required for platelet adhesion and aggregation. Defect of CD41 leads to disorders of coagulation.

### Product Details

<b>Form</b>	Liquid
<b>Concentration</b>	0.2 mg/mL
<b>Size</b>	25 $\mu$ g/100 $\mu$ g
<b>Clone No.</b>	MWReg30
<b>Host</b>	Rat
<b>Isotype</b>	Rat IgG1, $\kappa$
<b>Reactivity</b>	Mouse
<b>Application</b>	FCM
<b>Isotype Control</b>	<a href="#">PE Rat IgG1, <math>\kappa</math> Isotype Control[HRPN] [Product E-AB-F09823D]</a>
<b>Storage Buffer</b>	Phosphate buffered solution, pH 7.2, containing 0.09% stabilizer and 1% protein protectant.
<b>Shipping</b>	Biological ice pack at 4 °C
<b>Stability &amp; Storage</b>	Keep as concentrated solution. Store at 2~8°C and protected from prolonged exposure to light.Do not freeze. This product is guaranteed up to one year from purchase.

#### For Research Use Only

Thank you for your recent purchase.

If you would like to learn more about antibodies, please visit [www.elabscience.com](http://www.elabscience.com).

**Focus on your research  
Service for life science**

Applications: Activ- Activation; Block- Blocking; Separation- Cell Separation ; Cell Sep-Neg- Cell Separation by Negative Selection; FA- Functional Assay; Neut- Neutralization; Stim- Stimulation; FCM- Flow Cytometry; ICFM: Intracellular Staining for Flow Cytometry; WB- Western Blotting; IHC- Immunohistochemistry; IF- Immunofluorescence; IP- Immunoprecipitation

## Fluorophore

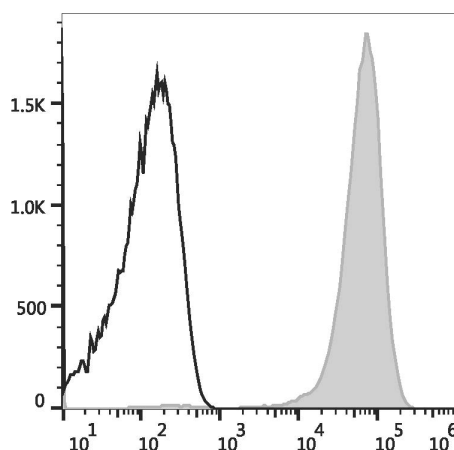
**Conjugation:** PE

PE is designed to be excited by the Blue (488 nm), Green (532 nm) and Yellow-Green (561 nm) lasers and detected using an optical filter centered near 575 nm (e.g., a 585/42 nm bandpass filter).

## Recommended usage

Each lot of this antibody is quality control tested by flow cytometric analysis. Please check your vial before the experiment. Since applications vary, the appropriate dilutions must be determined for individual use. We suggest each investigator should titrate the reagent to obtain optimal results [The recommended concentration is 0.1-1 µg/10<sup>6</sup> cells in 100 µL volume].

## Product data



Mouse platelets are stained with PE Anti-Mouse CD41 Antibody (filled gray histogram) or PE Rat IgG1, κ Isotype Control (empty black histogram).

## Related Information

1. Sample Preparation for Flow Cytometry <https://www.elabscience.com/List-detail-5594.html>
2. Staining Cell Surface Targets for Flow Cytometry <https://www.elabscience.com/List-detail-5568.html>
3. Flow Cytometry Troubleshooting Tips <https://www.elabscience.com/List-detail-5593.html>
4. How to select the appropriate detection channel through the spectrogram? <https://www.elabscience.com/List-detail-459742.html>

### For Research Use Only

Thank you for your recent purchase.

If you would like to learn more about antibodies, please visit [www.elabscience.com](http://www.elabscience.com).

**Focus on your research  
Service for life science**

Applications: Activ- Activation; Block- Blocking; Separation- Cell Separation ; Cell Sep-Neg- Cell Separation by Negative Selection; FA- Functional Assay; Neut- Neutralization; Stim- Stimulation; FCM- Flow Cytometry; ICFM: Intracellular Staining for Flow Cytometry; WB- Western Blotting; IHC- Immunohistochemistry; IF- Immunofluorescence; IP- Immunoprecipitation