

## Elab Fluor® 488 Anti-Human CD69 Antibody[FN50]

|                    |  |                     |       |
|--------------------|--|---------------------|-------|
| <b>Catalog No.</b> | E-AB-F1138L                                | <b>Reactivity</b>   | Human |
| <b>Storage</b>     | Store at 2~8°C, Avoid freeze / thaw cycles | <b>Applications</b> | FCM   |

**Important Note:** Centrifuge before opening to ensure complete recovery of vial contents.

### Antigen Information

|                        |   |
|------------------------|---|
| <b>Alternate Names</b> | Early activation antigen CD69,Activation inducer molecule,AIM,EA1,MLR-4   |
| <b>Uniprot ID</b>      | Q07108  |
| <b>Background</b>      | CD69 is a 27-33 kD type II transmembrane protein also known as activation inducer molecule (AIM), very early activation antigen (VEA), and MLR3. It is a member of the C-type lectin family, expressed as a disulfide-linked homodimer. Other members of this receptor family include NKG2, NKR-P1 CD94, and Ly49. CD69 is transiently expressed on activated leukocytes including T cells, thymocytes, B cells, NK cells, neutrophils, and eosinophils. CD69 is constitutively expressed by a subset of medullary mature thymocytes, platelets, mantle B cells, and certain CD4+ T cells in germinal centers of normal lymph nodes. CD69 is involved in early events of lymphocyte, monocyte, and platelet activation, and has a functional role in redirected lysis mediated by activated NK cells. |

### Product Details

|                                |  |
|--------------------------------|--|
| <b>Form</b>                    | Liquid   |
| <b>Size</b>                    | 20Tests/100Tests/100Tests×2  |
| <b>Clone No.</b>               | FN50   |
| <b>Host</b>                    | Mouse  |
| <b>Isotype</b>                 | Mouse IgG1, κ  |
| <b>Reactivity</b>              | Human  |
| <b>Application</b>             | FCM  |
| <b>Isotype Control</b>         | <a href="#">Elab Fluor® 488 Mouse IgG1, κ Isotype Control[MOPC-21] [Product E-AB-F09792L]</a>  |
| <b>Storage Buffer</b>          | Phosphate buffered solution, pH 7.2, containing 0.09% stabilizer and 1% protein protectant.  |
| <b>Shipping</b>                | Biological ice pack at 4 °C  |
| <b>Stability &amp; Storage</b> | Keep as concentrated solution.<br>Store at 2~8°C and protected from prolonged exposure to light.Do not freeze.<br>This product is guaranteed up to one year from purchase. |

#### For Research Use Only

Thank you for your recent purchase.

If you would like to learn more about antibodies,please visit [www.elabscience.com](http://www.elabscience.com).

**Focus on your research  
Service for life science**

Applications:Activ- Activation; Block- Blocking; Separation- Cell Separation ; Cell Sep-Neg- Cell Separation by Negative Selection; FA- Functional Assay; Neut- Neutralization; Stim- Stimulation; FCM- Flow Cytometry; ICFM: Intracellular Staining for Flow Cytometry; WB- Western Blotting; IHC- Immunohistochemistry; IF- Immunofluorescence; IP- Immunoprecipitation

## Fluorophore

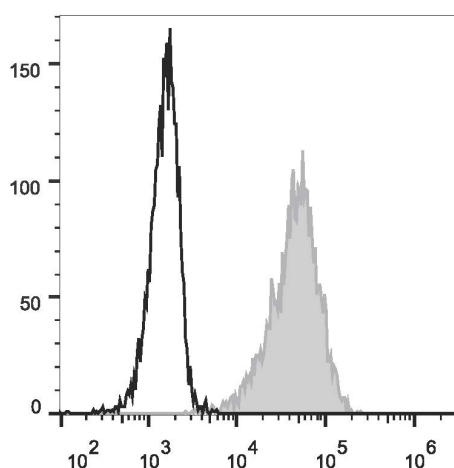
**Conjugation:** Elab Fluor® 488

Elab Fluor® 488 is designed to be excited by the Blue laser (488 nm) and detected using an optical filter centered near 520 nm (e.g., a 525/40 nm bandpass filter).

## Recommended usage

Each lot of this antibody is quality control tested by flow cytometric analysis. The amount of the reagent is suggested to be used 5 µL of antibody per test (million cells in 100 µL staining volume or per 100 µL of whole blood). Please check your vial before the experiment. Since applications vary, the appropriate dilutions must be determined for individual use.

## Product data



PMA and ionomycin-stimulated (4h) Jurkat cells are stained with Elab Fluor® 488 Anti-Human CD69 Antibody (filled gray histogram) or Mouse IgG1 Isotype Control Elab Fluor® 488 (empty black histogram).

## Related Information

1. Sample Preparation for Flow Cytometry <https://www.elabscience.com/List-detail-5594.html>
2. Staining Cell Surface Targets for Flow Cytometry <https://www.elabscience.com/List-detail-5568.html>
3. Flow Cytometry Troubleshooting Tips <https://www.elabscience.com/List-detail-5593.html>
4. How to select the appropriate detection channel through the spectrogram? <https://www.elabscience.com/List-detail-459742.html>

### For Research Use Only

Thank you for your recent purchase.

If you would like to learn more about antibodies, please visit [www.elabscience.com](http://www.elabscience.com).

**Focus on your research  
Service for life science**

Applications: Activ- Activation; Block- Blocking; Separation- Cell Separation ; Cell Sep-Neg- Cell Separation by Negative Selection; FA- Functional Assay; Neut- Neutralization; Stim- Stimulation; FCM- Flow Cytometry; ICFCM: Intracellular Staining for Flow Cytometry; WB- Western Blotting; IHC- Immunohistochemistry; IF- Immunofluorescence; IP- Immunoprecipitation