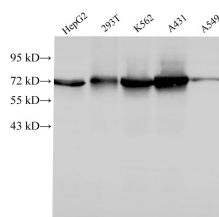


## HSPA1A Polyclonal Antibody

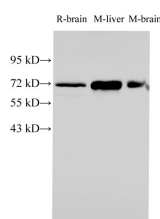
<b>Catalog No.</b>	E-AB-40302	<b>Reactivity</b>	H,M,R
<b>Storage</b>	Store at -20°C. Avoid freeze / thaw cycles.	<b>Host</b>	Rabbit
<b>Applications</b>	WB,IHC	<b>Isotype</b>	IgG

**Note:** Centrifuge before opening to ensure complete recovery of vial contents.

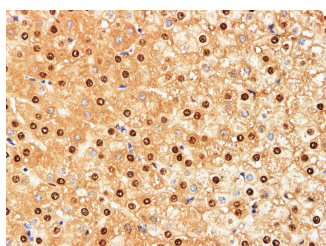
### Images



Western Blot analysis of HepG2, 293T, k562, A431 and A549 cells using HSPA1A Polyclonal Antibody at dilution of 1:1000



Western Blot analysis of Rat brain, Mouse liver and Mouse brain tissues using HSPA1A Polyclonal Antibody at dilution of 1:1000



Immunohistochemistry of paraffin-embedded Human liver using HSPA1A Polyclonal Antibody at dilution of 1:200

### Immunogen Information

<b>Immunogen</b>	Recombinant Human Heat shock 70 kDa protein 1A protein
<b>GeneID</b>	3303/3304
<b>Swissprot</b>	P0DMV8
<b>Synonyms</b>	heat shock protein family A (Hsp70) member 1A,heat shock protein family A (Hsp70) member 1B,HSP70-1B,HSP70-2,HSP70.2

### Product Information

<b>Calculated MW</b>	70kDa
<b>Observed MW</b>	70kDa
<b>Buffer</b>	PBS with 0.05% Proclin300 and 50% glycerol, pH7.4.
<b>Purify</b>	Antigen Affinity Purification
<b>Dilution</b>	WB 1:000-1:2000 IHC 1:100-1:300

### Background

This intronless gene encodes a 70kDa heat shock protein which is a member of the heat shock protein 70 family. In conjunction with other heat shock proteins, this protein stabilizes existing proteins against aggregation and mediates the folding of newly translated proteins in the cytosol and in organelles. It is also involved in the ubiquitin-proteasome pathway through interaction with the AU-rich element RNA-binding protein 1. The gene is located in the major histocompatibility complex class III region, in a cluster with two closely related genes which encode similar proteins.

### For Research Use Only

Thank you for your recent purchase.  
 If you would like to learn more about antibodies, please visit [www.elabscience.com](http://www.elabscience.com).

**Focus on your research**  
**Service for life science**

Applications:WB-Western Blot IHC-Immunohistochemistry IF-Immunofluorescence IP-Immunoprecipitation FC-Flow cytometry ChIP-Chromatin Immunoprecipitation Reactivity: H-Human R-Rat M-Mouse Mk-Monkey Dg-Dog Ch-Chicken Hm-Hamster Rb-Rabbit Sh-Sheep Pg-Pig Z-Zebrafish X-Xenopus C-Cow.