

Elab Fluor® 488 Anti-Human IgD Antibody[IA6-2]

Catalog No.	E-AB-F1171L	Reactivity	Human
Storage	Store at 2~8°C, Avoid freeze / thaw cycles	Applications	FCM

Important Note: Centrifuge before opening to ensure complete recovery of vial contents.

Antigen Information

Alternate Names	Immunoglobulin heavy constant delta,IGHD,Ig delta chain C region
Uniprot ID	P01880
Background	IgD, a member of the immunoglobulin (Ig) family, is expressed in naïve B cells. It has 3 Ig-like domains and exists in a transmembrane and a soluble form. In general, IgD is not secreted and usually its expression is lost after the Ig isotype switch. After antigen binding, IgD signals through the CD79a/CD79b (I α /I β) heterodimer, resulting in the activation of the B cell.

Product Details

Form	Liquid
Size	20Tests/100Tests/100Tests×2
Clone No.	IA6-2
Host	Mouse
Isotype	Mouse IgG2a, κ
Reactivity	Human
Application	FCM
Isotype Control	Elab Fluor® 488 Mouse IgG2a, κ Isotype Control[C1.18.4] [Product E-AB-F09802L]
Storage Buffer	Phosphate buffered solution, pH 7.2, containing 0.09% stabilizer and 1% protein protectant.
Shipping	Biological ice pack at 4 °C
Stability & Storage	Keep as concentrated solution. Store at 2~8°C and protected from prolonged exposure to light.Do not freeze. This product is guaranteed up to one year from purchase.

For Research Use Only

Thank you for your recent purchase.

If you would like to learn more about antibodies, please visit www.elabscience.com.

**Focus on your research
Service for life science**

Applications: Activ- Activation; Block- Blocking; Separation- Cell Separation ; Cell Sep-Neg- Cell Separation by Negative Selection; FA- Functional Assay; Neut- Neutralization; Stim- Stimulation; FCM- Flow Cytometry; ICFCM: Intracellular Staining for Flow Cytometry; WB- Western Blotting; IHC- Immunohistochemistry; IF- Immunofluorescence; IP- Immunoprecipitation

Fluorophore

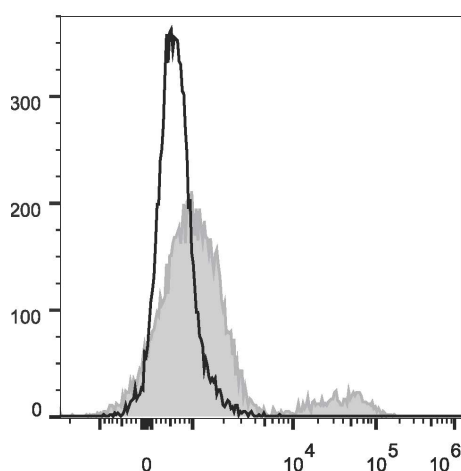
Conjugation: Elab Fluor® 488

Elab Fluor® 488 is designed to be excited by the Blue laser (488 nm) and detected using an optical filter centered near 520 nm (e.g., a 525/40 nm bandpass filter).

Recommended usage

Each lot of this antibody is quality control tested by flow cytometric analysis. The amount of the reagent is suggested to be used 5 µL of antibody per test (million cells in 100 µL staining volume or per 100 µL of whole blood). Please check your vial before the experiment. Since applications vary, the appropriate dilutions must be determined for individual use.

Product data



Human peripheral blood lymphocytes are stained with Elab Fluor® 488 Anti-Human IgD Antibody (filled gray histogram). Unstained lymphocytes (empty black histogram) are used as control.

Related Information

1. Sample Preparation for Flow Cytometry <https://www.elabscience.com/List-detail-5594.html>
2. Staining Cell Surface Targets for Flow Cytometry <https://www.elabscience.com/List-detail-5568.html>
3. Flow Cytometry Troubleshooting Tips <https://www.elabscience.com/List-detail-5593.html>
4. How to select the appropriate detection channel through the spectrogram? <https://www.elabscience.com/List-detail-459742.html>

For Research Use Only

Thank you for your recent purchase.

If you would like to learn more about antibodies, please visit www.elabscience.com.

**Focus on your research
Service for life science**

Applications: Activ- Activation; Block- Blocking; Separation- Cell Separation ; Cell Sep-Neg- Cell Separation by Negative Selection; FA- Functional Assay; Neut- Neutralization; Stim- Stimulation; FCM- Flow Cytometry; ICFM: Intracellular Staining for Flow Cytometry; WB- Western Blotting; IHC- Immunohistochemistry; IF- Immunofluorescence; IP- Immunoprecipitation