

Elab Fluor® 647 Anti-Human CD161 Antibody[HP-3G10]

Catalog No.	E-AB-F1155M	Reactivity	Human
Storage	Store at 2~8°C, Avoid freeze / thaw cycles	Applications	FCM

Important Note: Centrifuge before opening to ensure complete recovery of vial contents.

Antigen Information

Alternate Names	CLEC5B, NKR-P1A, NKR-P1A, HNKRP-1a, KLRB1
Uniprot ID	Q12918
Background	CD161 is a type II transmembrane glycoprotein, also known as NKR-P1A, that is expressed as a 40-44 kD homodimer. It is a member of the C-type lectin superfamily. CD161 is expressed on a majority of NK cells, NKT cells, and subsets of peripheral T cells and CD3+ thymocytes. It has been reported that Th17 cells are a subpopulation of CD4+CD161+CCR6+ cells. While the biological function of CD161 is not clear, it has been suggested to serve either as a stimulatory receptor or to inhibit NK cell-mediated cytotoxicity and cytokine production. LLT-1 (lectin-like transcript-1, also named as osteoclast inhibitory lectin or CLEC2D) is the ligand of CD161.

Product Details

Form	Liquid
Size	20Tests/100Tests/100Tests×2
Clone No.	HP-3G10
Host	Mouse
Isotype	Mouse IgG1, κ
Reactivity	Human
Application	FCM
Isotype Control	Elab Fluor® 647 Mouse IgG1, κ Isotype Control[MOPC-21] [Product E-AB-F09792M]
Storage Buffer	Phosphate buffered solution, pH 7.2, containing 0.09% stabilizer and 1% protein protectant.
Shipping	Biological ice pack at 4 °C
Stability & Storage	Keep as concentrated solution. Store at 2~8°C and protected from prolonged exposure to light. Do not freeze. This product is guaranteed up to one year from purchase.

For Research Use Only

Thank you for your recent purchase.

If you would like to learn more about antibodies, please visit www.elabscience.com.

**Focus on your research
Service for life science**

Applications: Activ- Activation; Block- Blocking; Separation- Cell Separation ; Cell Sep-Neg- Cell Separation by Negative Selection; FA- Functional Assay; Neut- Neutralization; Stim- Stimulation; FCM- Flow Cytometry; ICFCM: Intracellular Staining for Flow Cytometry; WB- Western Blotting; IHC- Immunohistochemistry; IF- Immunofluorescence; IP- Immunoprecipitation

Fluorophore

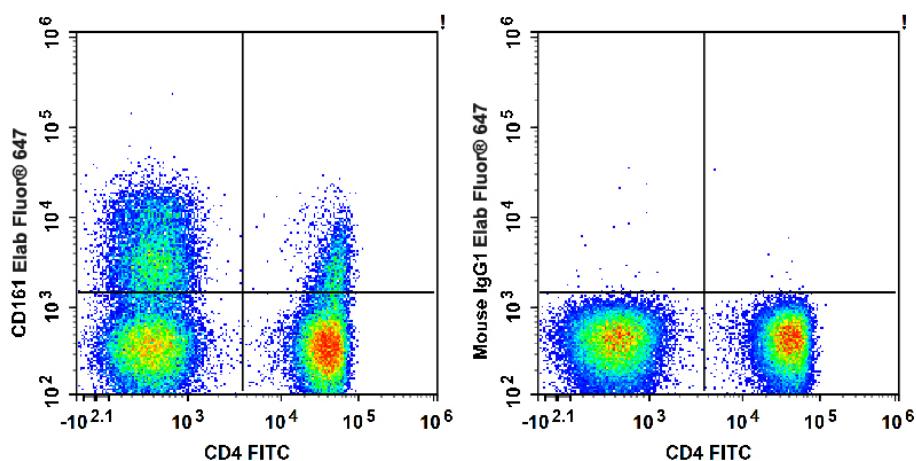
Conjugation: Elab Fluor® 647

Elab Fluor® 647 is designed to be excited by the Red laser (627-640 nm) and detected using an optical filter centered near 670 nm (e.g., a 660/20 nm bandpass filter).

Recommended usage

Each lot of this antibody is quality control tested by flow cytometric analysis. The amount of the reagent is suggested to be used 5 µL of antibody per test (million cells in 100 µL staining volume or per 100 µL of whole blood). Please check your vial before the experiment. Since applications vary, the appropriate dilutions must be determined for individual use.

Product data



Human peripheral blood lymphocytes are stained with Elab Fluor® 647 Anti-Human CD161 Antibody and FITC Anti-Human CD4 Antibody (Left). Lymphocytes stained with FITC Anti-Human CD4 Antibody and Elab Fluor® 647 Mouse IgG1, κ Isotype Control (Right) are used as control.

Related Information

1. Sample Preparation for Flow Cytometry <https://www.elabscience.com/List-detail-5594.html>
2. Staining Cell Surface Targets for Flow Cytometry <https://www.elabscience.com/List-detail-5568.html>
3. Flow Cytometry Troubleshooting Tips <https://www.elabscience.com/List-detail-5593.html>
4. How to select the appropriate detection channel through the spectrogram? <https://www.elabscience.com/List-detail-459742.html>

For Research Use Only

Thank you for your recent purchase.

If you would like to learn more about antibodies, please visit www.elabscience.com.

**Focus on your research
Service for life science**

Applications: Activ- Activation; Block- Blocking; Separation- Cell Separation ; Cell Sep-Neg- Cell Separation by Negative Selection; FA- Functional Assay; Neut- Neutralization; Stim- Stimulation; FCM- Flow Cytometry; ICFM: Intracellular Staining for Flow Cytometry; WB- Western Blotting; IHC- Immunohistochemistry; IF- Immunofluorescence; IP- Immunoprecipitation